

2727 W FRYE RD • CHANDLER, AZ

2727 FRYE
— AT —
CHANDLER



CBRE

Property Features



2-story, ±33,364 SF office building



±17,000 SF efficient floor plates



5.0/1000 parking ratio



9-foot finished ceiling height in most areas



5-ton split HVAC systems



1 passenger elevator



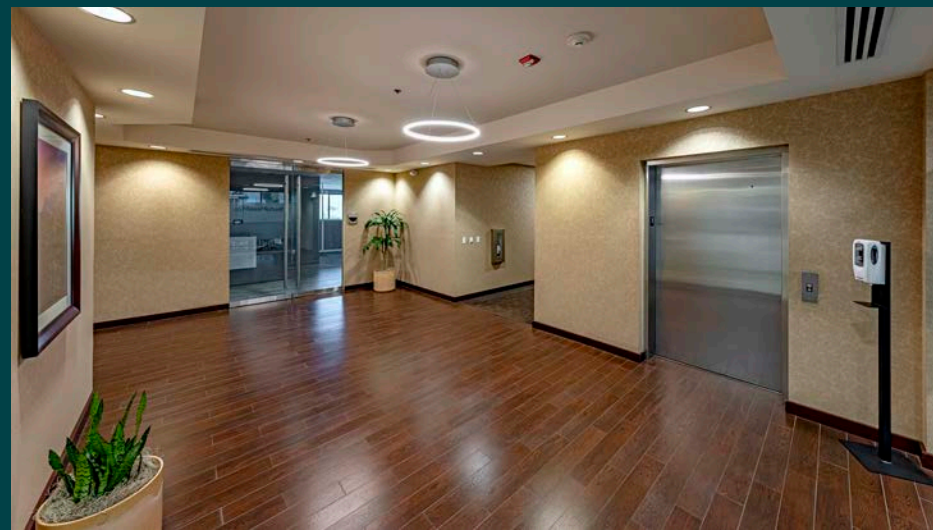
Building proximity card access system



Telecommunications provided by Cox Communications and Lumen Technologies



Alerton Energy Management System ("EMS")





RECEPTION



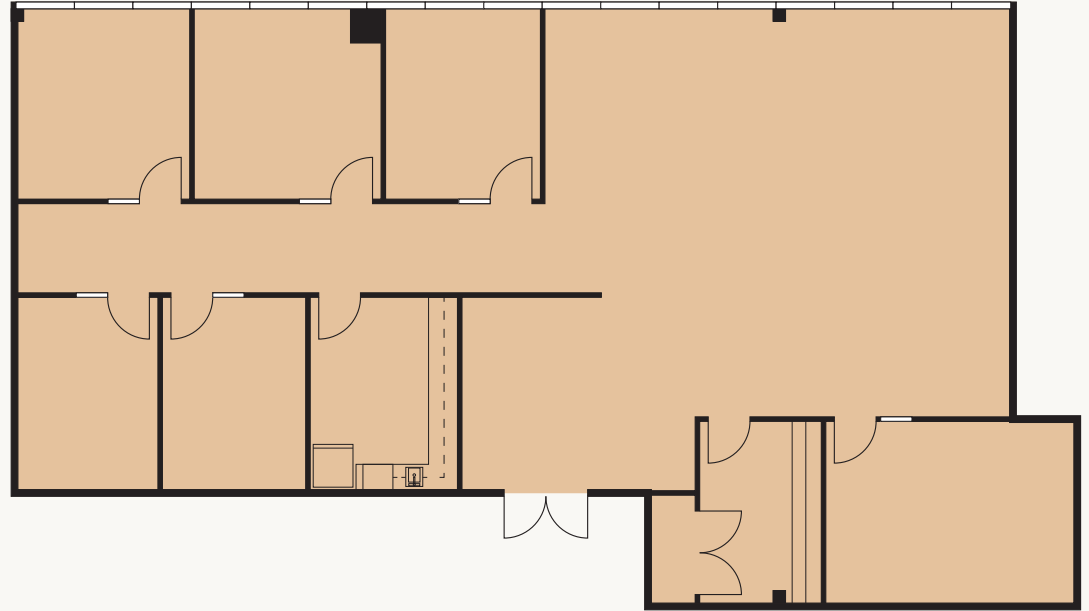
WORKSTATIONS



CONFERENCE



OFFICE

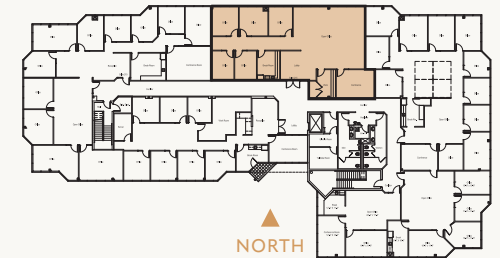


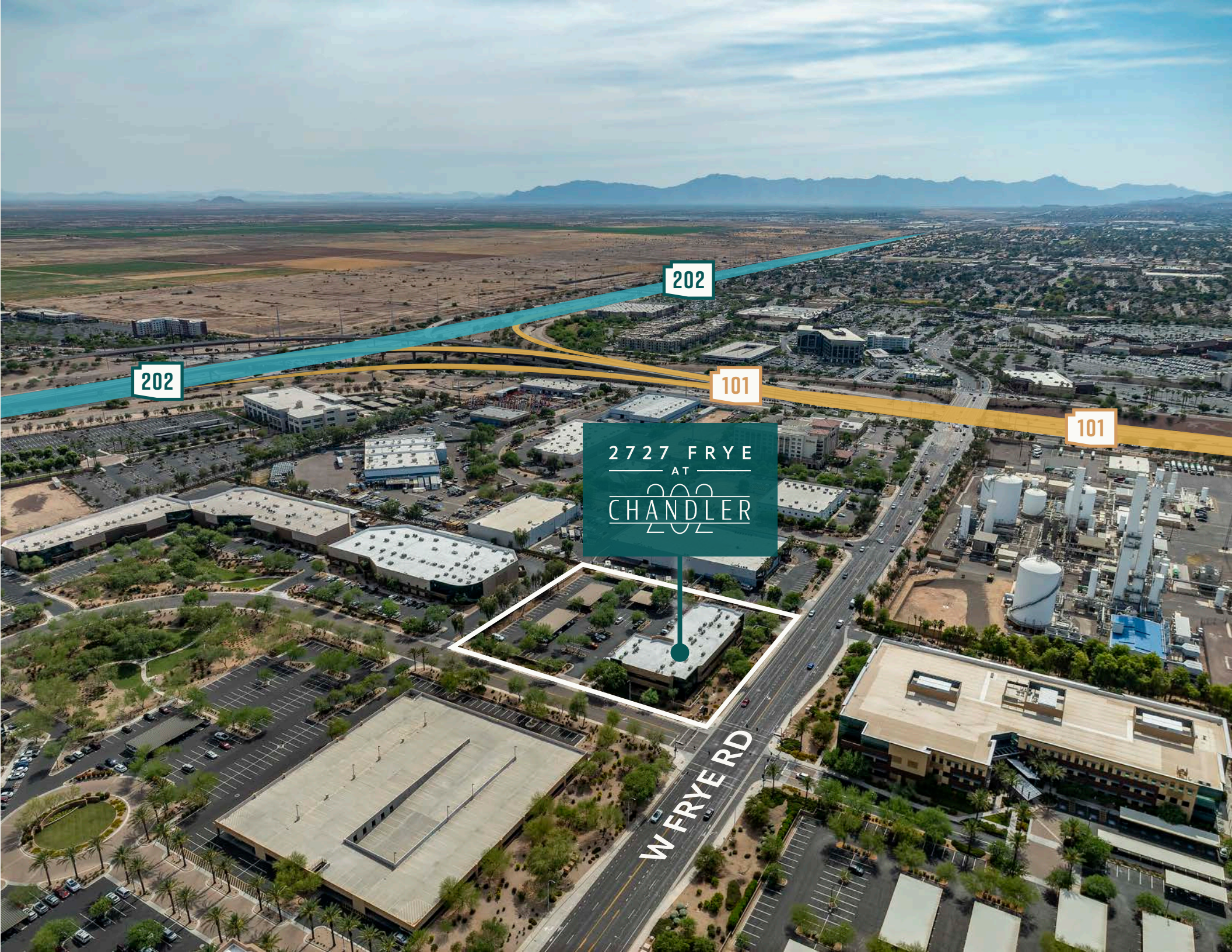
Suite 215

±2,908 SF

INVENTORY

Reception Area	1	Breakroom	1
Conference Room	1	IT/Storage Room	1
Offices	5	Open Area	1





202

202

101

101

2727 FRYE
AT
CHANDLER

W FRYE RD

Chandler Overview

Located in the heart of the thriving Southeast Valley, Chandler has been the address of choice for many major corporations and local/regional businesses. Some success factors include:



STRONG LABOR POOL



AFFORDABLE HOUSING



STRONG JOB GROWTH



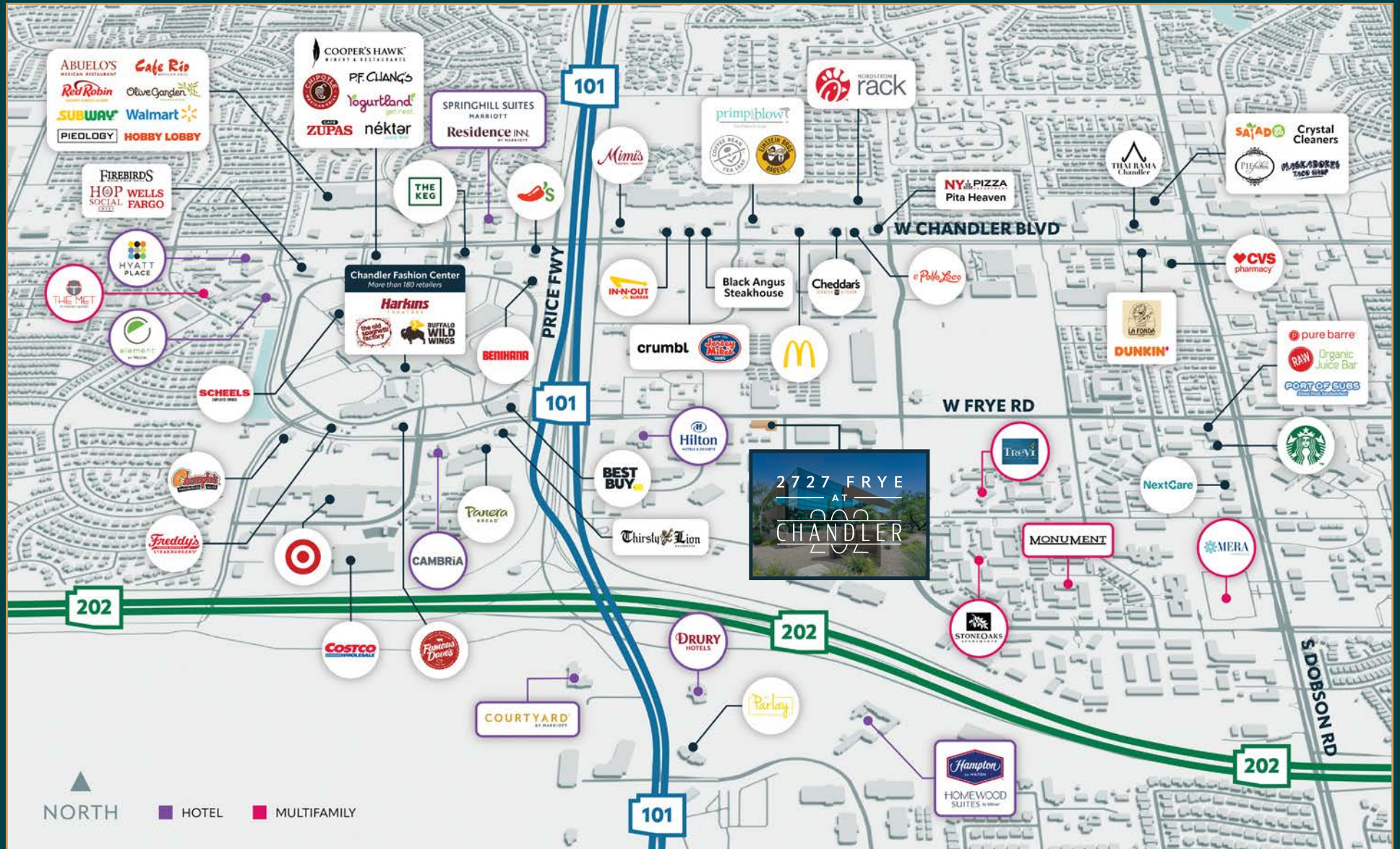
ATTRACTIVE CLIMATE



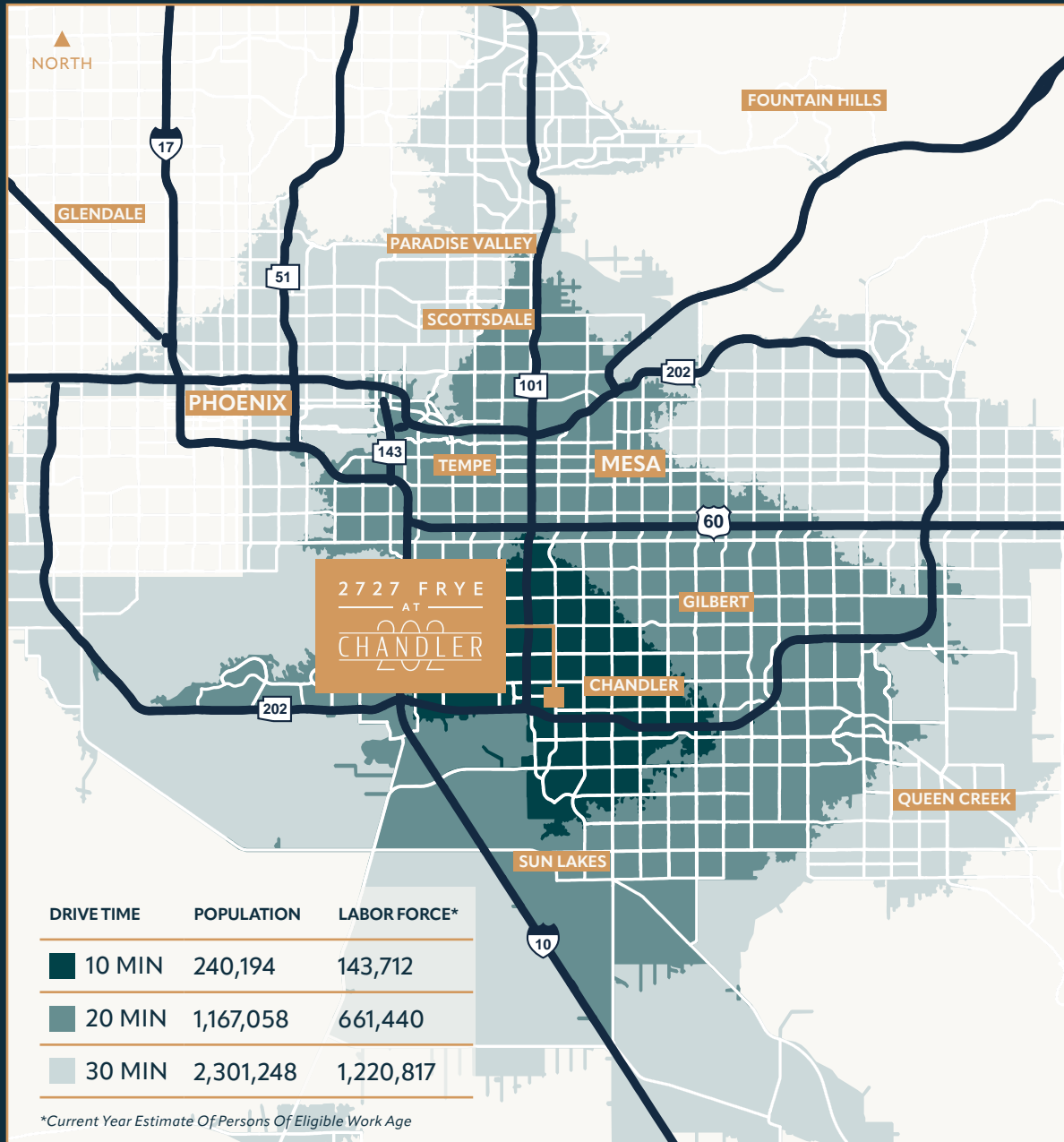
THRIVING POPULATION GROWTH



Area Amenities



Drive Times



Corporate Neighbors



For more information,
please contact:

SEAN SPELLMAN

+1 602 735 5615
sean.spellman@cbre.com

LAUREN LOVELL

+1 602 735 5638
lauren.lovell@cbre.com

CBRE

© 2024 CBRE, Inc. All rights reserved. This information has been obtained from reliable sources but has not been verified for accuracy or completeness. CBRE, Inc. makes no guarantee, representation, or warranty and accepts no responsibility or liability for the accuracy, completeness, or reliability of the information contained herein. You should conduct a careful, independent investigation of the property and verify all information. Any reliance on this information is solely at your own risk. CBRE and the CBRE logo are service marks of CBRE, Inc. All other marks displayed on this document are the property of their respective owners, and the use of such marks does not imply any affiliation with or endorsement of CBRE. Photos herein are the property of their respective owners. Use of these images without the express written consent of the owner is prohibited.