

**SUBLEASE 10,909 SF**



## Sublease Features

- 2nd Floor / Suite 250
- 10,909 SF (Half Floor)
- **Rate: \$14/FS**
- Term thru December 31, 2025
- Plug & Play | 48 Workstations | Mostly - Open floor plan
- Executive Board Room + 2 Huddle Rooms
- 4 Private Offices
- Kitchen & Break Area

Ballantyne Amenities

**100+**

*Dining/Retail Options*

**600**

*Hotel Rooms*

**LIVE MUSIC**

*Outdoor Amphitheater*

**20+ miles**

*Walking Paths + Bike Lanes*

**greenway**

*Access*

**100+ acres**

*Dedicated Green Space*

**100+ events**

*Engaging Experiences*

**CJ WALTERS**  
( T ) 704.430.7534  
( E ) WALTERS@VESTIAN.COM

**EVAN HOLMES**  
( T ) 984.204.0019  
( E ) HOLMES@VESTIAN.COM

**GREG KRZYSKO**  
( T ) 312.961.6792  
( E ) KRZYSKO@VESTIAN.COM



**SUBLEASE 10,909 SF**



**CJ WALTERS**  
( T ) 704.430.7534  
( E ) WALTERS@VESTIAN.COM

**EVAN HOLMES**  
( T ) 984.204.0019  
( E ) HOLMES@VESTIAN.COM

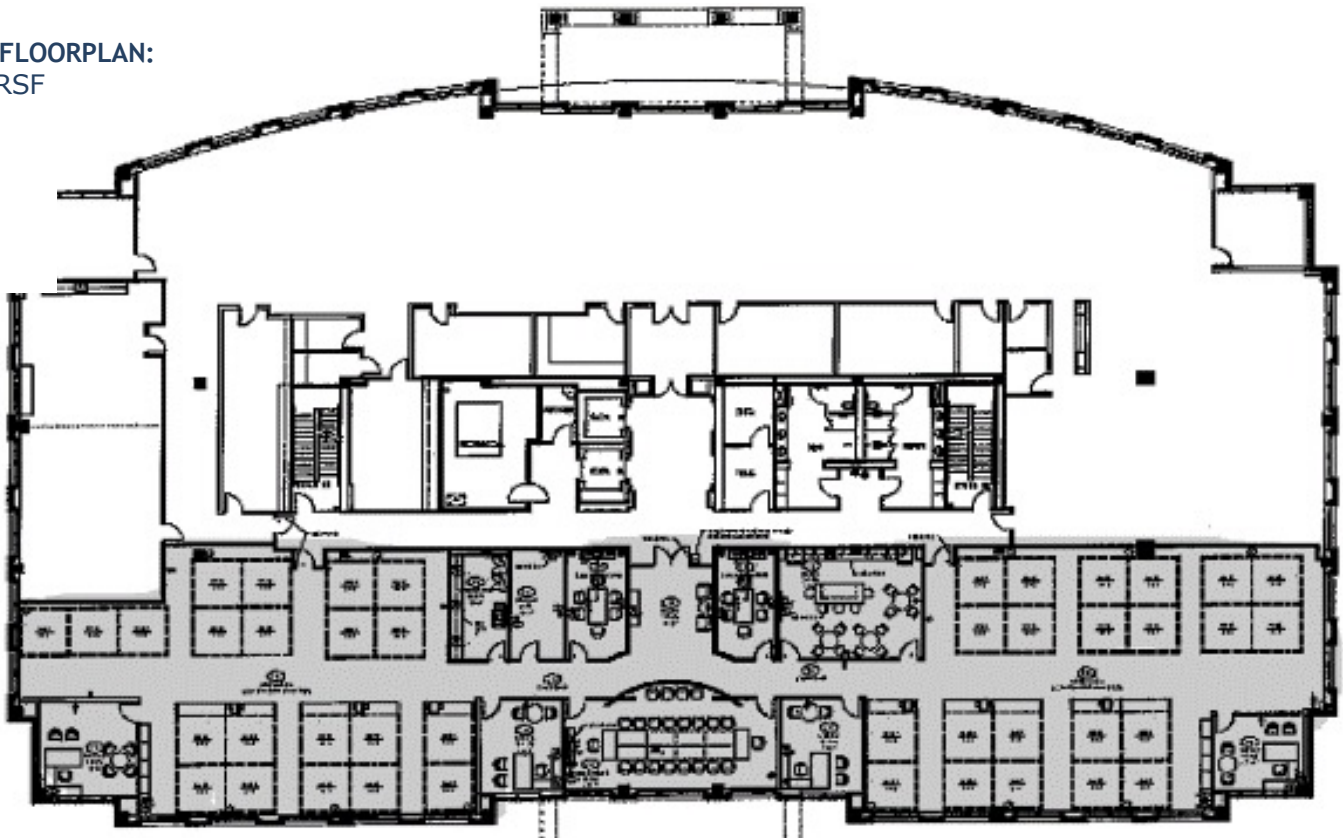
**GREG KRZYSKO**  
( T ) 312.961.6792  
( E ) KRZYSKO@VESTIAN.COM



**SUBLEASE 10,909 SF**



**OFFICE FLOORPLAN:**  
10,909 RSF



**CJ WALTERS**  
( T ) 704.430.7534  
( E ) WALTERS@VESTIAN.COM

**EVAN HOLMES**  
( T ) 984.204.0019  
( E ) HOLMES@VESTIAN.COM

**GREG KRZYSKO**  
( T ) 312.961.6792  
( E ) KRZYSKO@VESTIAN.COM