

**LEASE RATE
REDUCED!**



4311 8th Street S, Wisconsin Rapids, WI

Property Features

- This former Applebee's is located on Walmart outlot – excellent exposure and built-in customer base.
- Prime retail location on 8th Street South (State Highway 13), the main commercial corridor in Wisconsin Rapids - high traffic counts over 20,000 vehicles per day on 8th Street S.
- Existing restaurant buildout including bar area, kitchen infrastructure and equipment, dining room, booth seating, and restrooms.
- Strong national retailers: Walmart, Aldi, Marshalls, Harbor Freight, PetSmart, Walgreens, Goodwill, Starbucks, O'Reilly Auto Parts, Verizon, McDonald's and many more.
- Signalized intersection access for easy ingress/egress
- All brick construction – durable, well-built structure suitable for long-term commercial use.

**LEASE RATE: WAS: \$18/SF
NOW: \$16/SF NNN**

BUILDING SIZE	5,400 SF
ACRES	1.45
ZONING	COMMERCIAL
YEAR BUILT	2004/2014
PARKING	AMPLE
SIGNAGE	BUILDING AND PYLON

For more information:

Elizabeth Ringgold

920.560.5061 • elizabethr@naipfefferle.com

Gregory Hedrich

608.844.9063 • gregoryh@naipfefferle.com

NO WARRANTY OR REPRESENTATION, EXPRESS OR IMPLIED, IS MADE AS TO THE ACCURACY OF THE INFORMATION CONTAINED HEREIN, AND THE SAME IS SUBMITTED SUBJECT TO ERRORS, OMISSIONS, CHANGE OF PRICE, RENTAL OR OTHER CONDITIONS, PRIOR SALE, LEASE OR FINANCING, OR WITHDRAWAL WITHOUT NOTICE, AND OF ANY SPECIAL LISTING CONDITIONS IMPOSED BY OUR PRINCIPALS NO WARRANTIES OR REPRESENTATIONS ARE MADE AS TO THE CONDITION OF THE PROPERTY OR ANY HAZARDS CONTAINED THEREIN ARE ANY TO BE IMPLIED.

200 E. Washington Street, Suite 2A
Appleton, WI
920.968.4700
naipfefferle.com

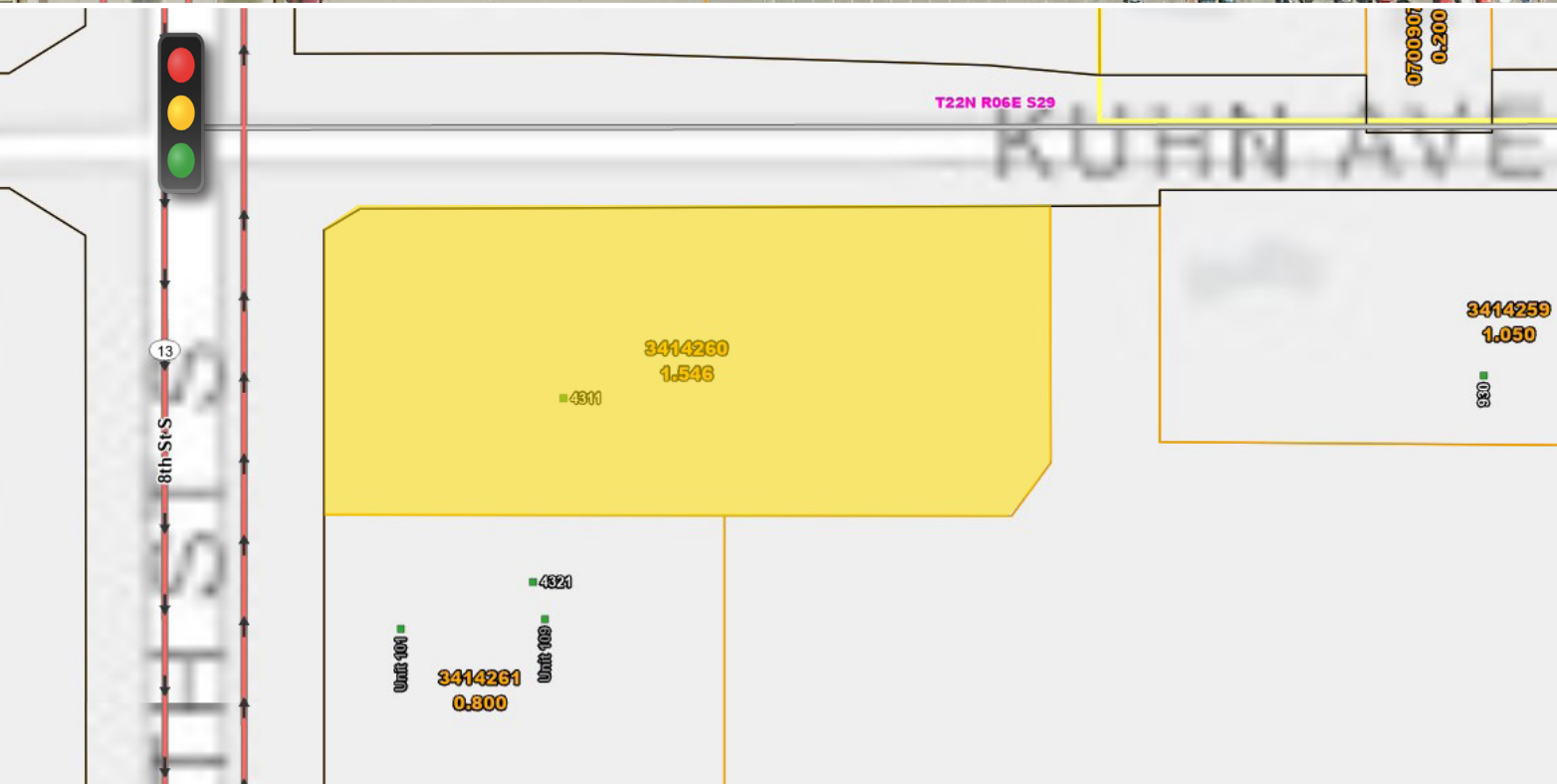
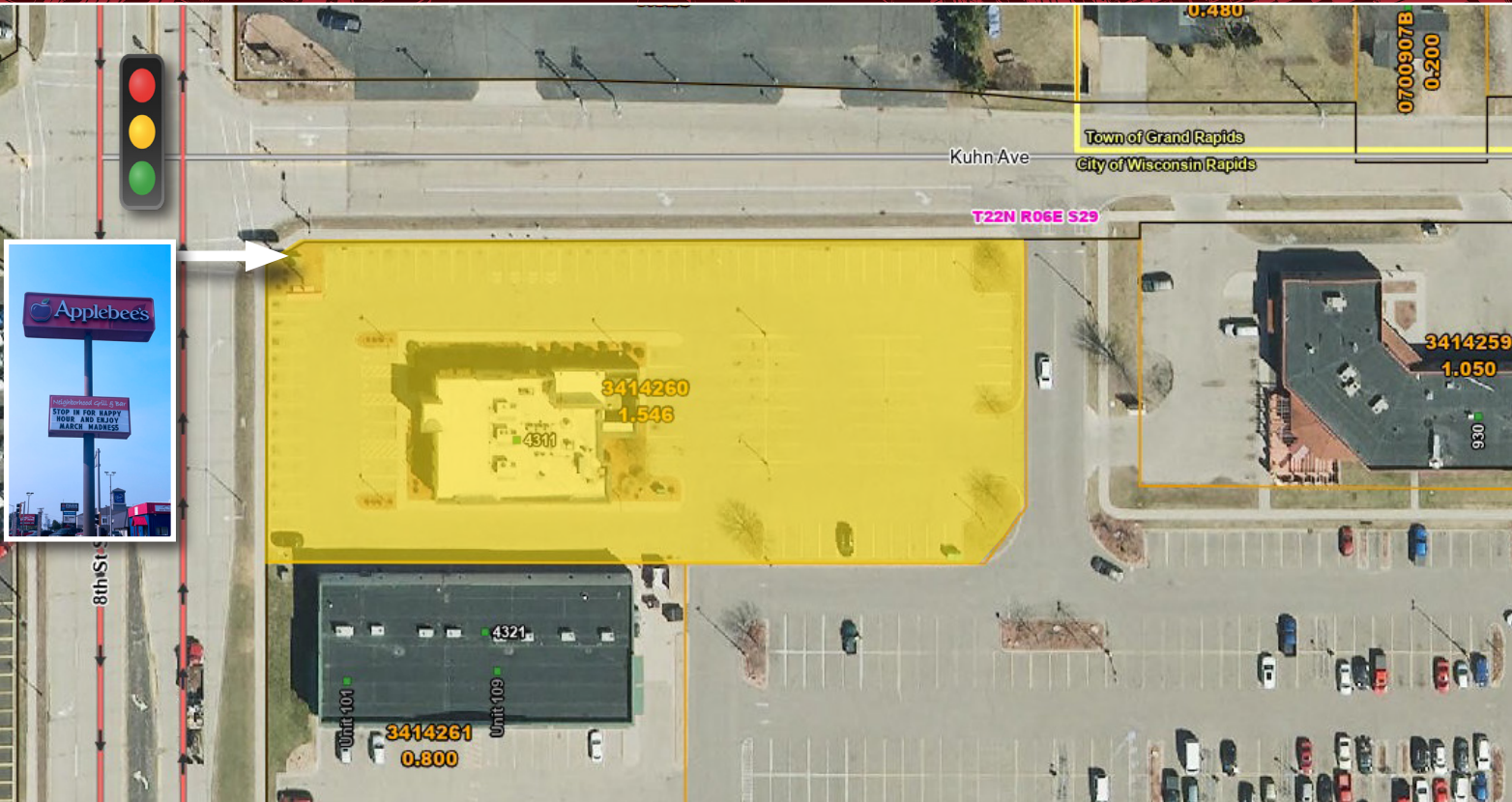
NAIPfefferle

For Lease
4311 8th Street S
Wisconsin Rapids, WI



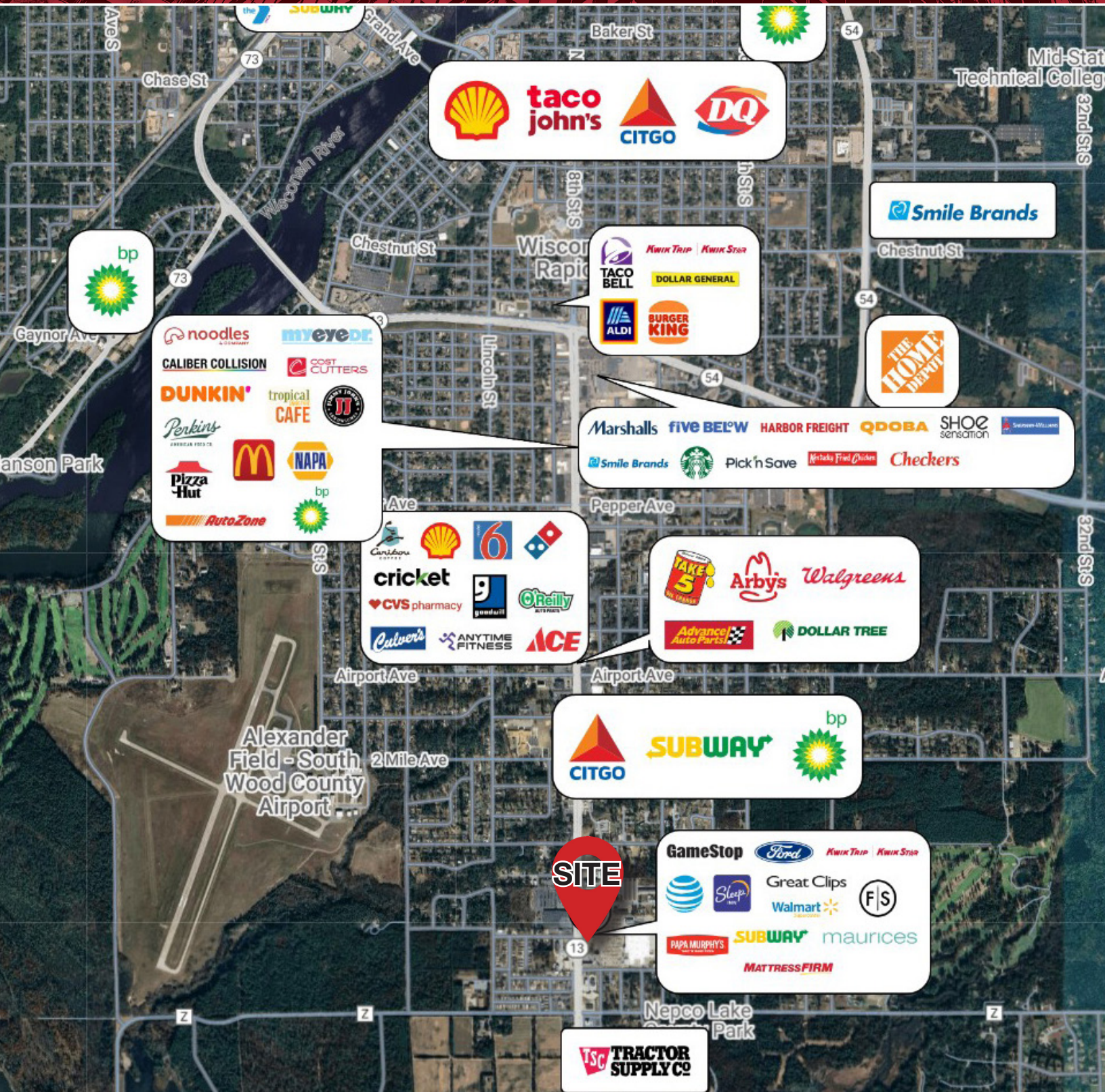
NAIPfefferle

200 E. Washington Street, Suite 2A
Appleton, WI
920.968.4700
naipfefferle.com



NAIPfefferle

For Lease
4311 8th Street S
Wisconsin Rapids, WI

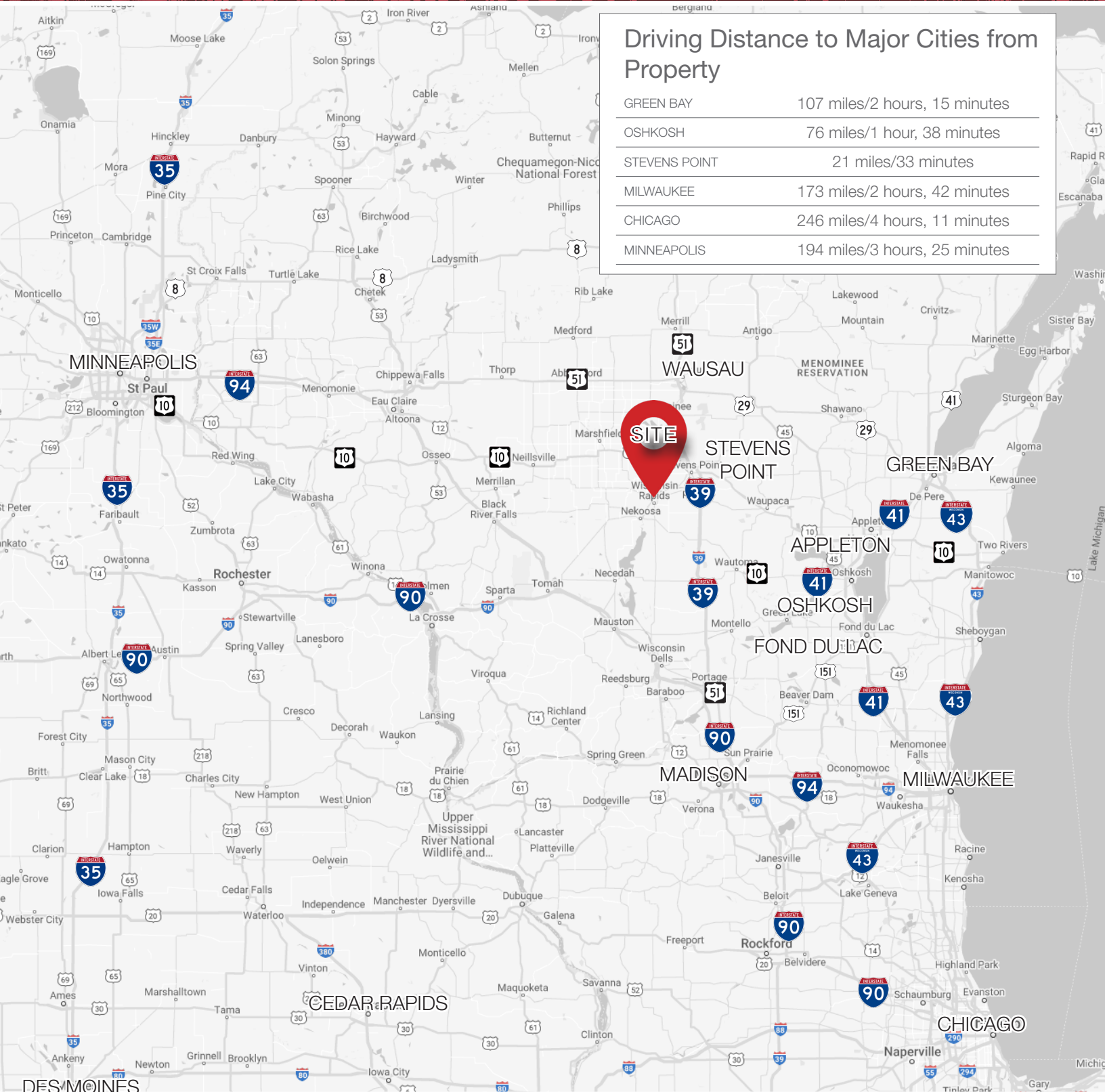


NAIPfefferle

200 E. Washington Street, Suite 2A
Appleton, WI
920.968.4700
naipfefferle.com

Driving Distance to Major Cities from Property

GREEN BAY	107 miles/2 hours, 15 minutes
OSHKOSH	76 miles/1 hour, 38 minutes
STEVENS POINT	21 miles/33 minutes
MILWAUKEE	173 miles/2 hours, 42 minutes
CHICAGO	246 miles/4 hours, 11 minutes
MINNEAPOLIS	194 miles/3 hours, 25 minutes





Demographics (1, 3 & 5 Mile Radius)

	POPULATION	
	1 MILE:	2,981
	3 MILES:	21,377
	5 MILES:	34,166
	EMPLOYEES	
	1 MILE:	1,262
	3 MILES:	10,932
	5 MILES:	16,342
	AVERAGE INCOME	
	1 MILE:	\$90,822
	3 MILES:	\$91,847
	5 MILES:	\$91,421
	BUSINESSES	
	1 MILE:	145
	3 MILES:	792
	5 MILES:	1,138
	AVERAGE HOUSEHOLDS	
	1 MILE:	1,343
	3 MILES:	9,575
	5 MILES:	15,122
	TRAFFIC COUNTS	
	STATE HIGHWAY 13	15,359
	HIGHWAY Z W	1,229
	GRIFFITH AVENUE	4,329

STATE OF WISCONSIN BROKER DISCLOSURE



Wisconsin law requires all real estate licensees to give the following information about brokerage services to prospective customers.

Prior to negotiating on your behalf the Brokerage firm, or an agent associated with the firm, must provide you the following disclosure statement.

Disclosure to Customers

You are a customer of NAI Pfefferle (hereinafter Firm). The Firm is either an agent of another party in the transaction or a subagent of another firm that is the agent of another party in the transaction. A broker or a salesperson acting on behalf of the Firm may provide brokerage services to you. Whenever the Firm is providing brokerage services to you, the Firm and its brokers and salespersons (hereinafter Agents) owe you, the customer, the following duties:

- The duty to provide brokerage services to you fairly and honestly.
- The duty to exercise reasonable skill and care in providing brokerage services to you.
- The duty to provide you with accurate information about market conditions within a reasonable time if you request it, unless disclosure of the information is prohibited by law.
- The duty to disclose to you in writing certain Material Adverse Facts about a Property, unless disclosure of the information is prohibited by law.
- The duty to protect your confidentiality. Unless the law requires it, the Firm and its Agents will not disclose your confidential information or the confidential information of other parties.
- The duty to safeguard trust funds and other property held by the Firm or its Agents.
- The duty, when negotiating, to present contract proposals in an objective and unbiased manner and disclose the advantages and disadvantages of the proposals.

Please review this information carefully. An Agent of the Firm can answer your questions about brokerage services, but if you need legal advice, tax advice, or a professional home inspection, contact an attorney, tax advisor, or home inspector. This disclosure is required by section 452.135 of the Wisconsin statutes and is for information only. It is a plain-language summary of the duties owed to a customer under section 452.133(1) of the Wisconsin statutes.

Confidentiality Notice to Customers

The Firm and its Agents will keep confidential any information given to the Firm or its Agents in confidence, or any information obtained by the Firm or its Agents that a reasonable person would want to be kept confidential, unless the information must be disclosed by law or you authorize the Firm to disclose particular information. The Firm and its Agents shall continue to keep the information confidential after the Firm is no longer providing brokerage services to you.

No representation is made as to the legal validity of any provision or the adequacy of any provision in any specific transaction.

The following information is required to be disclosed by law:

1. Material Adverse Facts, as defined in section 452.01(5g) of the Wisconsin Statutes (see definition below).
2. Any facts known by the Firm or its Agents that contradict any information included in a written inspection report on the property or real estate that is the subject of the transaction.

To ensure that the Firm and its Agents are aware of what specific information you consider confidential, you may list that information below or provide that information to the Firm or its Agents by other means. At a later time, you may also provide the Firm or its Agents with other information you consider to be confidential.

CONFIDENTIAL INFORMATION

NON-CONFIDENTIAL INFORMATION

(the following information may be disclosed to the Firm and its Agents)

(Insert information you authorize to be disclosed, such as financial qualification information.)

Definition of Material Adverse Facts

A “Material Adverse Fact” is defined in Wis. Stat. 452.01(5g) as an Adverse Fact that a party indicates is of such significance, or that is generally recognized by a competent licensee as being of such significance to a reasonable party, that it affects or would affect the party’s decision to enter into a contract or agreement concerning a transaction or affects or would affect the party’s decision about the terms of such a contract or agreement.

An “Adverse Fact” is defined in Wis. Stat. 452.01(1e) as a condition or occurrence that a competent licensee generally recognizes will significantly and adversely affect the value of the property, significantly reduce the structural integrity of improvements to real estate, or present a significant health risk to occupants of the property; or information that indicates that a party to a transaction is not able to or does not intend to meet his or her obligations under a contract or agreement made concerning the transaction.

Notice About Sex Offender Registry

You may obtain information about the sex offender registry and persons registered with the registry by contacting the Wisconsin Department of Corrections on the Internet at <http://www.doc.wi.gov> or by telephone at 608-240-5830.