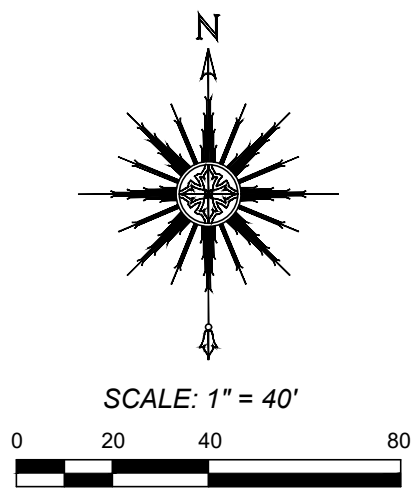
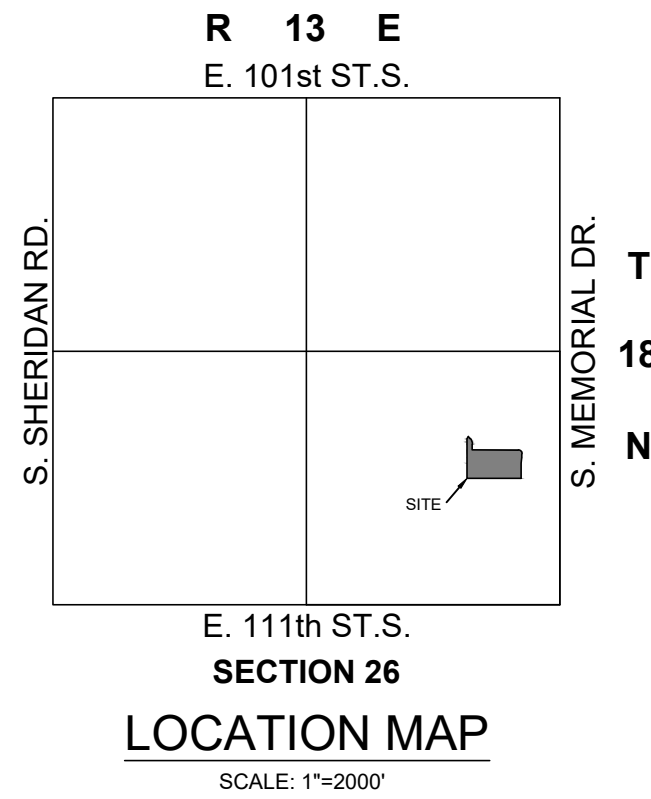
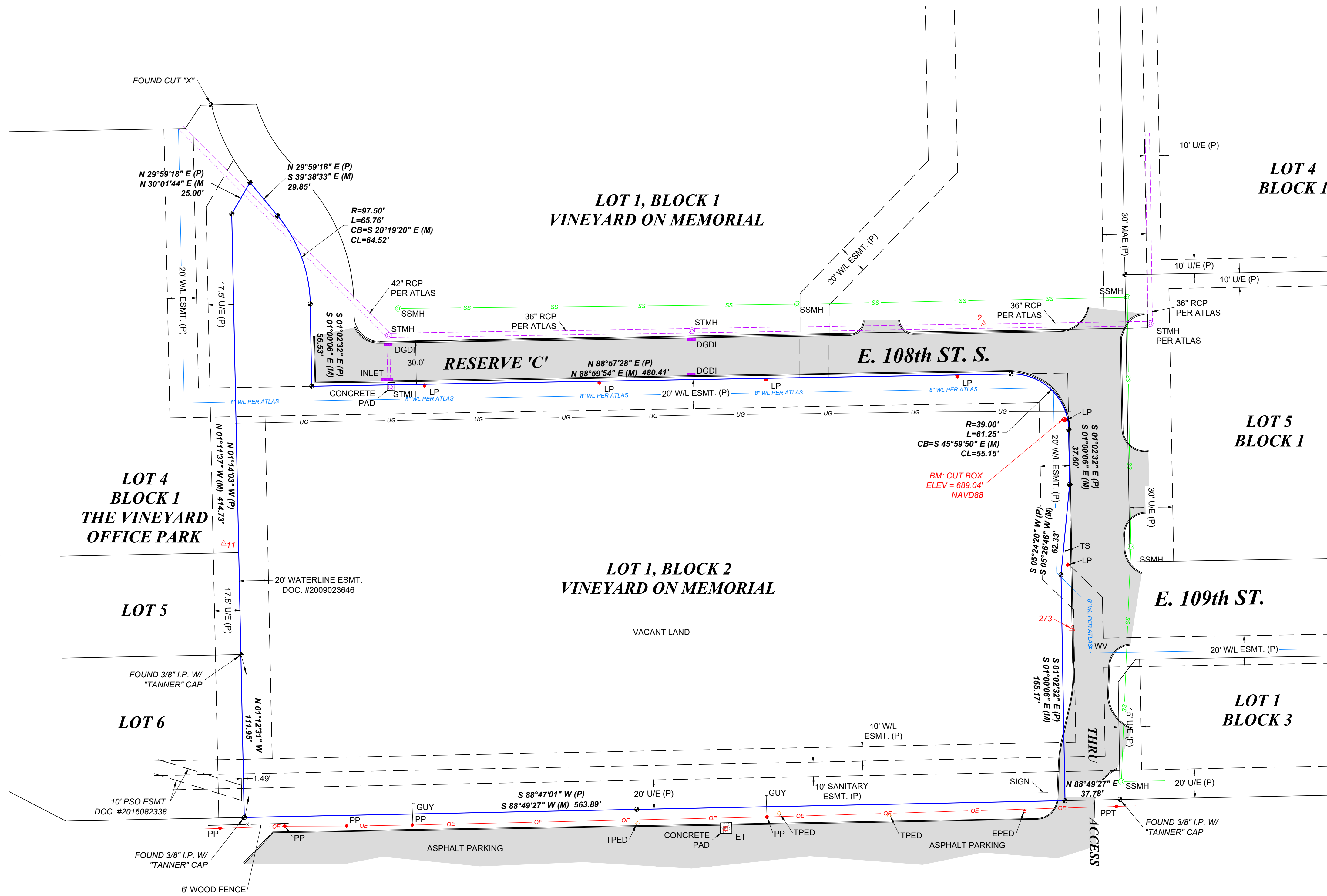


- LEGEND**
- AC = AIR CONDITIONER
 - AD = AREA INLET
 - ASP = AUTO SPRINKLER
 - BC = BOTTOM OF CURB
 - B/L = BUILDING LINE
 - BM = BENCHMARK
 - BWF = BARBED WIRE FENCE
 - CATV = CABLE TV PEDESTAL
 - CL = CENTERLINE
 - CLB = CLIMB BARRIER
 - CLF = CHAIN LINK FENCE
 - CO = CLEAN OUT
 - CPS = COX POWER SUPPLY
 - CMP = CORRUGATED METAL PIPE
 - CPP = CORRUGATED PLASTIC PIPE
 - DGDI = DOUBLE GRATE DROP INLET
 - DIP = DUCTILE IRON PIPE
 - EM = ELECTRIC METER
 - EO = ELECTRIC OUTLET
 - EPED = ELECTRIC PEDESTAL
 - ET = ELECTRIC TRANSFORMER
 - FF = FINISH FLOOR
 - FG = FINISH GRADE
 - FH = FIRE HYDRANT
 - FP = FLAG POLE
 - FL = FLOWLINE
 - GM = GAS METER
 - GR = GAS REGULATOR
 - GV = GAS VALVE
 - GL = GROUND LIGHT
 - GP = GUARD POST
 - GUY = GUY ANCHOR
 - HDWL = HEADWALL
 - HPP = HIGH POWER POLE
 - HPS = HANDICAP PARKING SIGN
 - HWF = HOG WIRE FENCE
 - ICV = IRRIGATION CONTROL VALVE
 - I.P. = IRON PIN
 - (L) = PER LEGAL DESCRIPTION
 - LP = LIGHT POLE
 - (M) = MEASURED DATA
 - MB = MAILBOX
 - MRK = UTILITY MARKER
 - MW = MONITORING WELL
 - (P) = PER PLAT
 - P/E = PIPELINE EASEMENT
 - PLF = PLASTIC FENCE
 - PM = PARKING METER
 - PP = POWER POLE
 - PPD = POWER POLE W/ DROP SERVICE
 - PPDT = POWER POLE W/ DROP & TRANSFORMER
 - PPLT = POWER POLE W/ LIGHT & TRANSFORMER
 - PPM = POWER POLE W/ ELECTRIC METER
 - PPNS = POWER POLE / NO SERVICE
 - PPT = POWER POLE W/ TRANSFORMER
 - RCB = REINFORCED CONCRETE BOX
 - RCP = REINFORCED CONCRETE PIPE
 - RD = ROOF DRAIN
 - ROW = RIGHT-OF-WAY
 - SSLH = SANITARY SEWER LAMP HOLE
 - SSMH = SANITARY SEWER MANHOLE
 - S/B = SETBACK
 - SGDI = SINGLE GRATE DROP INLET
 - SH = SPRINKLER HEAD
 - SP = SIGN POST
 - STMH = STORM SEWER MANHOLE
 - STJB = STORM SEWER JUNCTION BOX
 - TM = TELEPHONE MANHOLE
 - TPED = TELEPHONE PEDESTAL
 - TC = TOP OF CURB
 - TD = TOP OF DECK
 - TG = TOP OF GRATE
 - TH = THRESHOLD
 - TR = TOP OF RIM
 - TS = TRAFFIC SIGN
 - TSLP = TRAFFIC SIGNAL LIGHT POLE
 - TSPB = TRAFFIC SIGNAL PULL BOX
 - TSMH = TRAFFIC SIGNAL MANHOLE
 - TVLT = TELEPHONE VAULT
 - TW = TOP OF WALL
 - UE = UTILITY EASEMENT
 - UM = UTILITY MARKER
 - VP = VENT PIPE
 - WF = WATER FAUCET
 - WM = WATER METER
 - WSE = WATER SURFACE ELEVATION
 - WV = WATER VALVE
 - WDF = WOOD FENCE
 - (Z) = ZONING
 - C- = CENTERLINE
 - X- = FENCE LINE
 - OC- = OVERHEAD COMMUNICATION
 - OE- = OVERHEAD ELECTRIC
 - SS- = SANITARY SEWER
 - ST- = STORM SEWER
 - TOP/TOE- = TOP/TOE OF GROUND SLOPE
 - UC- = UNDERGROUND COMMUNICATION
 - UE- = UNDERGROUND ELECTRIC
 - UG- = UNDERGROUND GAS
 - UT- = UNDERGROUND TELEPHONE
 - WL- = WATERLINE



LEGAL DESCRIPTION - PER ASSESSOR
LOT ONE (1), BLOCK TWO (2), THE VINEYARD ON MEMORIAL, AN ADDITION TO THE CITY OF TULSA, TULSA COUNTY, STATE OF OKLAHOMA, ACCORDING TO THE RECORDED PLAT THEREOF.

SURVEYOR'S NOTES
PREPARED FOR: PAINE & ASSOCIATES
PHYSICAL ADDRESS: ACCOUNT NO.: R60983832661940, TULSA, TULSA COUNTY, OK 74133
BEARINGS ARE BASED UPON THE OKLAHOMA STATE PLANE COORDINATE SYSTEM, (3501 OK N), NORTH AMERICAN DATUM 1983 (NAD83).
TOPOGRAPHIC INFORMATION SHOWN HEREON IS RELATIVE TO NAVD 1988 DATUM USING ADS CONTROL STATION #TUL 6, ELEVATION = 673.131' AS THE PRIMARY BENCHMARK. SITE BENCHMARK AS SHOWN HEREON.
EASEMENT AND BUILDING SETBACK LINES SHOWN ON THE RECORDED PLAT ARE SHOWN HEREON. EASEMENTS MAY EXIST THAT ARE NOT SHOWN.
REFER TO CURRENT ZONING FOR NEW CONSTRUCTION GUIDELINES.
SET 3/8" IRON PIN W/ GREEN "FRITZ CA5848" CAP OR MAG NAIL W/ "FRITZ CA5848" WASHER AT ALL CORNERS UNLESS NOTED AND SHOWN OTHERWISE HEREON.
GROSS LAND AREA: 172,824.0 SQ. FEET OR 3.97 ACRES.
WE HAVE EXAMINED A MAP BY THE FEDERAL EMERGENCY MANAGEMENT AGENCY, FLOOD INSURANCE RATE MAP, CITY OF TULSA, OKLAHOMA, COMMUNITY PANEL NO. 40143C0389L - OCTOBER 16, 2012, WHICH INDICATES THE SURVEYED PROPERTY TO BE WITHIN UNSHADED ZONE X (AREAS DETERMINED TO BE OUTSIDE THE 0.2% ANNUAL CHANCE FLOODPLAIN). THE SURVEYED PROPERTY IS NOT AFFECTED BY THE CITY OF TULSA REGULATORY FLOODPLAIN.
LAST SITE VISIT: MARCH 21, 2023.
ALL UTILITIES MAY NOT BE SHOWN - CALL OKIE 1-800-522-6543!
UNDERGROUND UTILITIES SHOWN HEREON WERE DERIVED FROM OBSERVABLE FIELD EVIDENCE AND CITY OF TULSA ENGINEERING ATLAS SHEET NO. 1576

SURVEY CONTROL TABLE				
POINT	NORTHING	EASTING	ELEVATION	DESCRIPTION
2	373487.520	2593159.713	688.43	FOUND 3/8" I.P.
11	373536.858	2592637.479	667.88	22 3/8" I.P. W/ "TANNER" CAP
273	373278.167	2593220.489	688.39	FOUND MAG NAIL



SURVEYOR'S EXHIBIT

LOT 1, BLOCK 2, THE VINEYARD ON MEMORIAL
ACCOUNT NO.: R60983832661940, TULSA, TULSA COUNTY, OK 74133

SURVEY: MJL	DATE: 03.21.2023	PREPARED BY: FRITZ LAND SURVEYING, LLC
DRAFT: RLL	DATE: 09.15.2023	2017 W. 91ST STREET, TULSA, OK 74132
APPROVED: PLS	DATE: 09.15.2023	PH: 918-528-5121
REV:	PROJECT NO.: 23095	FRITZLANDSURVEYING@GMAIL.COM
		C.A. # 5848 EXPIRES: 6-30-2024