

PROPERTY AND BUSINESS

FOR SALE | \$1,900,000



BAGELS BY THE SEA

210 S HOLLADAY DR | SEASIDE, OR 97138

For more information or a property tour, please contact:

RAYMOND DUCHEK

503.225.8492

RaymondD@norris-stevens.com

THOMAS MCDOWELL

503.225.8473

TomM@norris-stevens.com

Information contained herein has been obtained from others and considered to be reliable; however, a prospective purchaser or lessee is expected to verify all information to their own satisfaction.

01/13/2026

Norris & Stevens

INVESTMENT REAL ESTATE SERVICES



900 SW 5TH AVE, 17TH FLOOR | PORTLAND, OR 97204
503.223.3171 • NORRIS-STEVENS.COM

BAGELS BY THE SEA

210 S Holladay Dr | Seaside, OR 97007

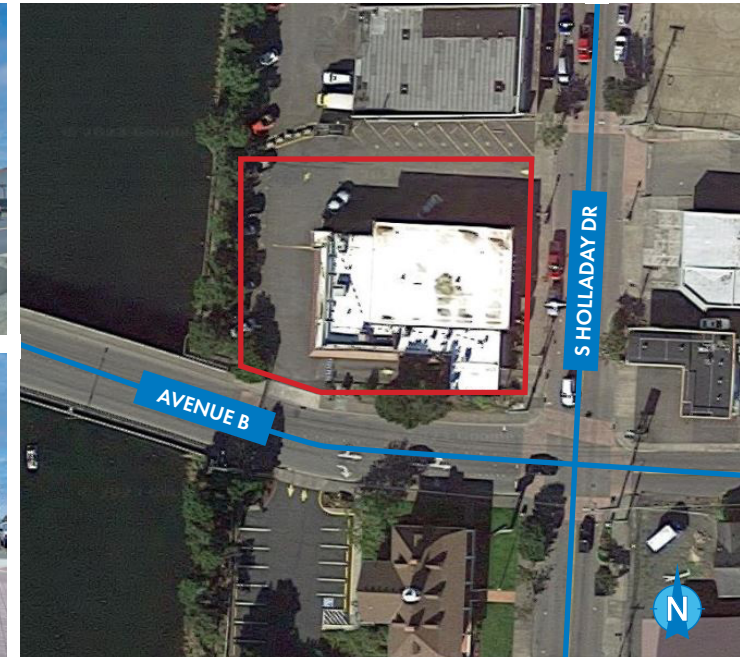
PROPERTY & BUSINESS FOR SALE

DETAILS

- Price:
 - Land & Building: \$1,500,000
 - Business: \$400,000
 - Combined: \$1,900,000
- Year built: 1961 / Renov. 2000 & 2022
- Tenant: Seaside Bagel Company, LLC
- Lease term: 5 years from close of escrow
- Building size: ± 5,900 SF
- Land size: ± 0.62 AC (± 27,007 SF)

FEATURES

- Bagels by the Sea generating \$1 million in gross sales
- Call broker for financial details
- Desirable location in Seaside, 1 1/2 blocks from Broadway
- Close proximity to downtown tourist attractions and hotels
- Seaside has approximately 1.7 million visitors per year
- Recently remodeled exterior upgrade
- Operational drive through
- Large off street parking area
- Flexible zoning C4 (Central Commercial)
- Great long term development site



For more information or a property tour, please contact:

RAYMOND DUCHEK

503.225.8492

RaymondD@norris-stevens.com

THOMAS MCDOWELL

503.225.8473

TomM@norris-stevens.com

Information contained herein has been obtained from others and considered to be reliable; however, a prospective purchaser or lessee is expected to verify all information to their own satisfaction.

Norris & Stevens

INVESTMENT REAL ESTATE SERVICES



900 SW 5TH AVE, 17TH FLOOR | PORTLAND, OR 97204
503.223.3171 • NORRIS-STEVENS.COM

PROPERTY PHOTOS



For more information or a property tour, please contact:

RAYMOND DUCHEK

503.225.8492

RaymondD@norris-stevens.com

THOMAS MCDOWELL

503.225.8473

TomM@norris-stevens.com

Information contained herein has been obtained from others and considered to be reliable; however, a prospective purchaser or lessee is expected to verify all information to their own satisfaction.

Norris & Stevens

INVESTMENT REAL ESTATE SERVICES



900 SW 5TH AVE, 17TH FLOOR | PORTLAND, OR 97204
503.223.3171 • NORRIS-STEVENS.COM

HOTELS & LOCAL ATTRACTIONS

BAGELS BY THE SEA

210 S Holladay Dr | Seaside, OR 97138

DEMOGRAPHICS

	1 Mile	3 Miles	5 Miles
Population	7,826	11,196	12,161
Median Age	44.8	45.6	46.3
Households	3,544	4,931	5,343
Avg Household Income	\$57,604	\$65,680	\$69,030

SUBJECT PROPERTY



For more information or a property tour, please contact:

RAYMOND DUCHEK

503.225.8492

RaymondD@norris-stevens.com

THOMAS MCDOWELL

503.225.8473

TomM@norris-stevens.com

Information contained herein has been obtained from others and considered to be reliable; however, a prospective purchaser or lessee is expected to verify all information to their own satisfaction.

Norris & Stevens

INVESTMENT REAL ESTATE SERVICES



900 SW 5TH AVE, 17TH FLOOR | PORTLAND, OR 97204
503.223.3171 • NORRIS-STEVENS.COM