

CLINTON, NJ - MIXED-USE DEVELOPMENT

62 1/2 CENTER ST, CLINTON, NJ 08809



OFFERING SUMMARY

Available SF: 2,000 - 25,000 SF
Lease Rate: Call for Details
Building Size: 25,000 SF

NEIGHBORING TENANTS



PROPERTY OVERVIEW

Available Q3 2020: 31 Acre Mixed-Use Development with 7 Acres of Commercial Use in Clinton NJ

PROPERTY HIGHLIGHTS

- Up to 25,000 SF available Q3 2020
- 31 Acre Mixed-Use Development with 7 Acres of Commercial Use
- 5 Pad Sites
- 272 Housing Units
- Prime Retail Site
- 1,150 Feet of Frontage on Route 31
- Entrance Located at Proposed Signalized Intersection
- Convenient Access to Route 31, Route 78, and Route 22

FOR MORE INFORMATION CONTACT:

MARK HANDWERKER

201.703.9700 x131
mhandwerker@thegoldsteingroup.com

Licensed Real Estate Broker | 45 EISENHOWER DRIVE | SUITE 246 | PARAMUS, NJ 07652

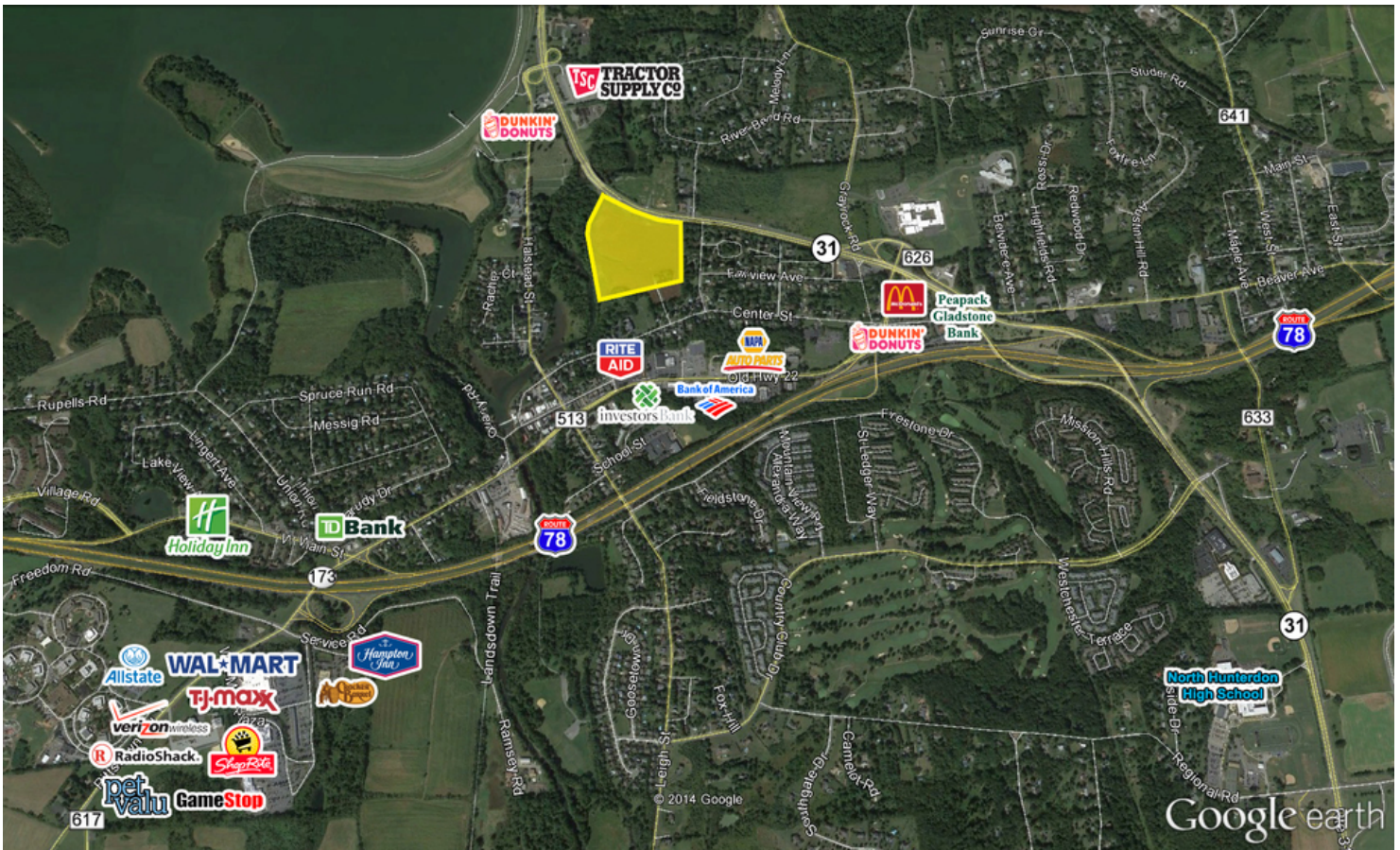
All information is from sources deemed reliable and is submitted subject to errors, omissions, change of price, terms, rental, prior sale and withdrawal without notice.



THEGOLDSTEINGROUP.COM

CLINTON, NJ - MIXED-USE DEVELOPMENT

62 1/2 CENTER ST, CLINTON, NJ 08809



FOR MORE INFORMATION CONTACT:

MARK HANDWERKER
 201.703.9700 x131
 mhandwerker@thegoldsteingroup.com

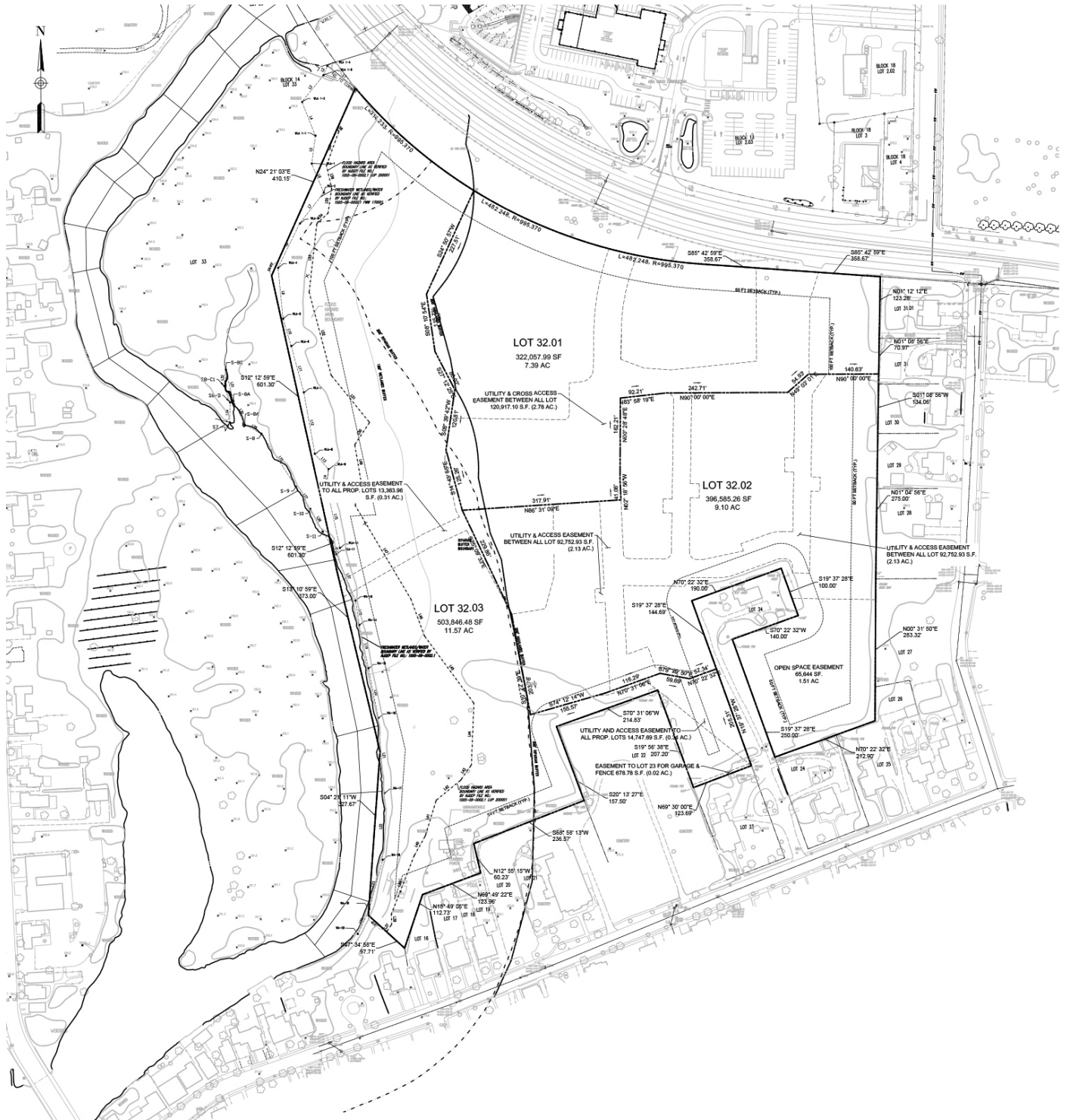


Licensed Real Estate Broker | 45 EISENHOWER DRIVE | SUITE 246 | PARAMUS, NJ 07652

THEGOLDSTEINGROUP.COM

All information is from sources deemed reliable and is submitted subject to errors, omissions, change of price, terms, rental, prior sale and withdrawal without notice.

CLINTON, NJ - MIXED-USE DEVELOPMENT
 62 1/2 CENTER ST, CLINTON, NJ 08809



FOR MORE INFORMATION CONTACT:

MARK HANDWERKER
 201.703.9700 x131
 mhandwerker@thegoldsteingroup.com

Licensed Real Estate Broker | 45 EISENHOWER DRIVE | SUITE 246 | PARAMUS, NJ 07652

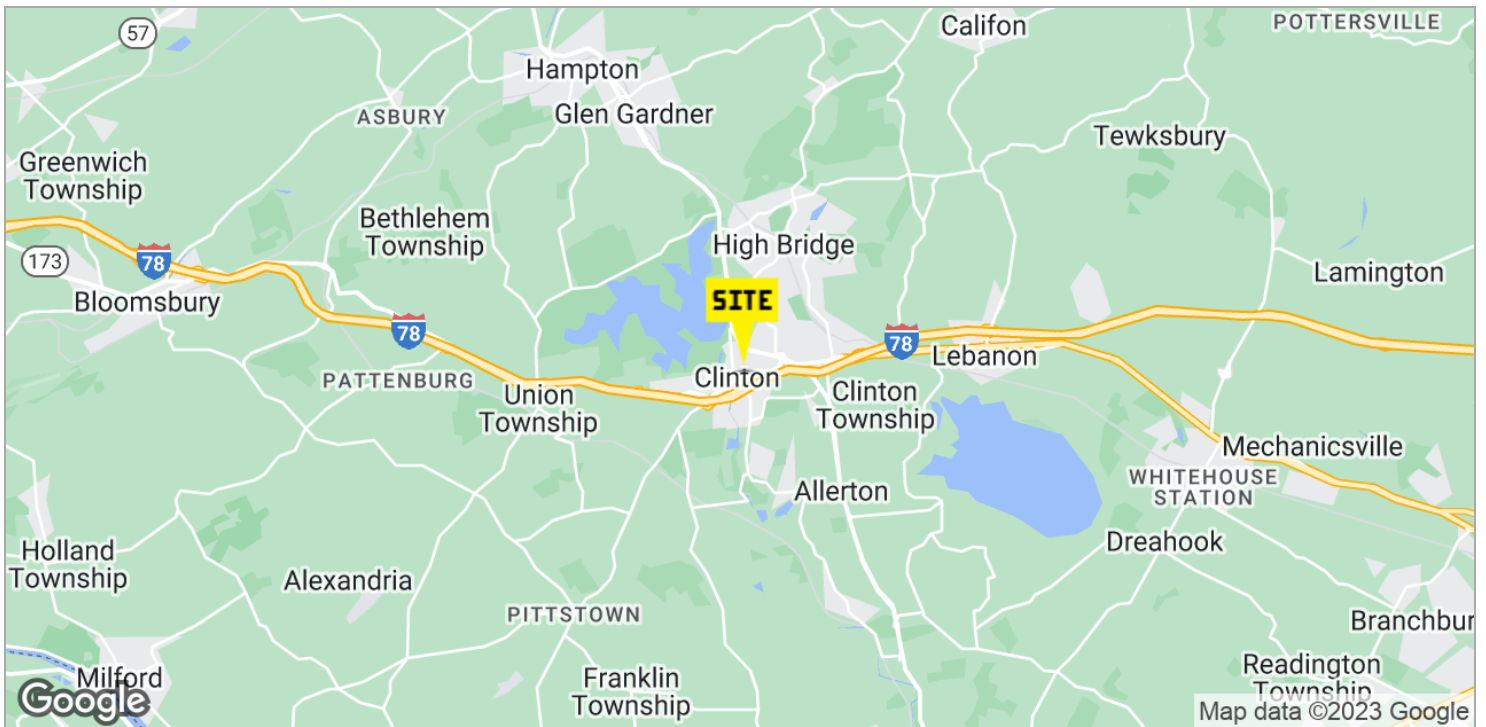
All information is from sources deemed reliable and is submitted subject to errors, omissions, change of price, terms, rental, prior sale and withdrawal without notice.



THEGOLDSTEINGROUP.COM

CLINTON, NJ - MIXED-USE DEVELOPMENT

62 1/2 CENTER ST, CLINTON, NJ 08809



FOR MORE INFORMATION CONTACT:

MARK HANDWERKER

201.703.9700 x131
 mhandwerker@thegoldsteingroup.com

Licensed Real Estate Broker | 45 EISENHOWER DRIVE | SUITE 246 | PARAMUS, NJ 07652

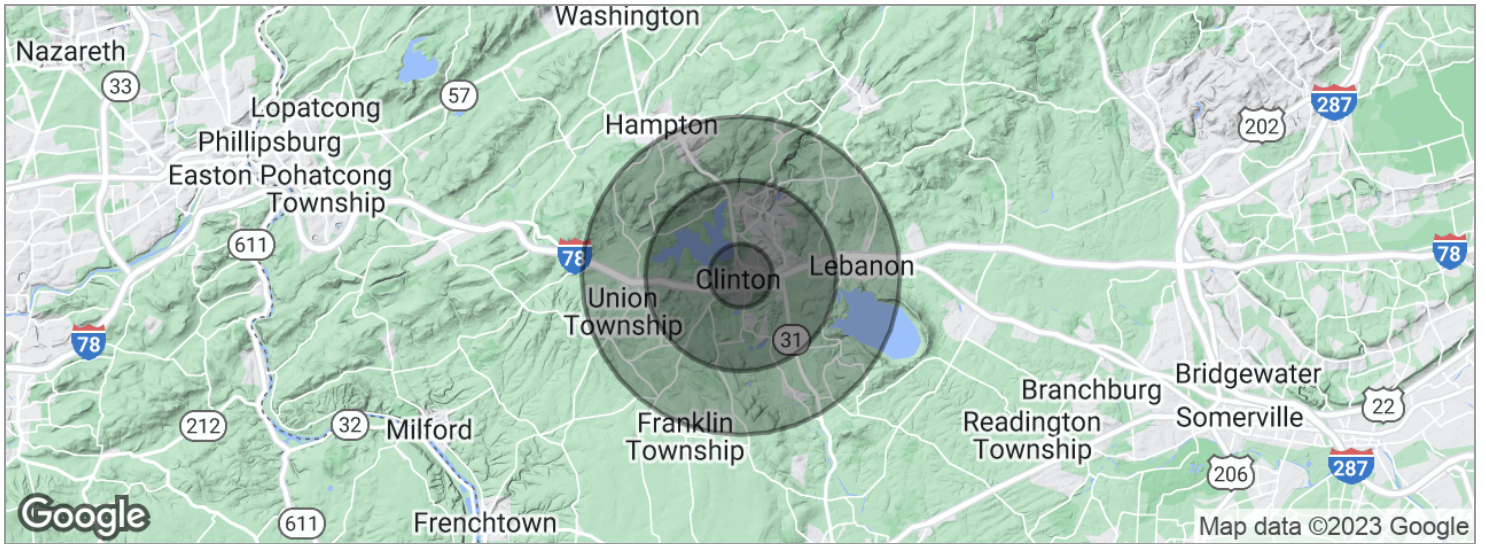
All information is from sources deemed reliable and is submitted subject to errors, omissions, change of price, terms, rental, prior sale and withdrawal without notice.



THEGOLDSTEINGROUP.COM

CLINTON, NJ - MIXED-USE DEVELOPMENT

62 1/2 CENTER ST, CLINTON, NJ 08809



POPULATION

1 MILE

3 MILES

5 MILES

Total population	3,907	15,743	31,867
Median age	37.7	37.7	38.4
Median age (Male)	36.8	36.8	37.6
Median age (Female)	40.6	41.1	41.7

HOUSEHOLDS & INCOME

1 MILE

3 MILES

5 MILES

Total households	1,473	5,524	10,816
# of persons per HH	2.7	2.8	2.9
Average HH income	\$115,755	\$124,005	\$128,420
Average house value	\$424,678	\$426,475	\$463,555

* Demographic data derived from 2020 ACS - US Census

FOR MORE INFORMATION CONTACT:

MARK HANDWERKER

201.703.9700 x131
mhandwerker@thegoldsteingroup.com

Licensed Real Estate Broker | 45 EISENHOWER DRIVE | SUITE 246 | PARAMUS, NJ 07652

All information is from sources deemed reliable and is submitted subject to errors, omissions, change of price, terms, rental, prior sale and withdrawal without notice.



THEGOLDSTEINGROUP.COM