

ONE SANDY CENTER : 10011 SOUTH CENTENNIAL PARKWAY | SANDY, UTAH



ONE SANDY CENTER



10011 SOUTH CENTENNIAL PARKWAY
SANDY, UTAH

Chris Kirk, sior
Managing Director
+1 801 947 8385
chris.kirk@colliers.com

Travis Yates
Vice President
+1 801 947 8336
travis.yates@colliers.com



Accelerating success.



This document has been prepared by Colliers International for advertising and general information only. Colliers International makes no guarantees, representations or warranties of any kind, expressed or implied, regarding the information including, but not limited to, warranties of content, accuracy and reliability. Any interested party should undertake their own inquiries as to the accuracy of the information. Colliers International excludes unequivocally all inferred or implied terms, conditions and warranties arising out of this document and excludes all liability for loss and damages arising therefrom. This publication is the copyrighted property of Colliers International and/or its licensor(s). ©2024. All rights reserved.

Highlights

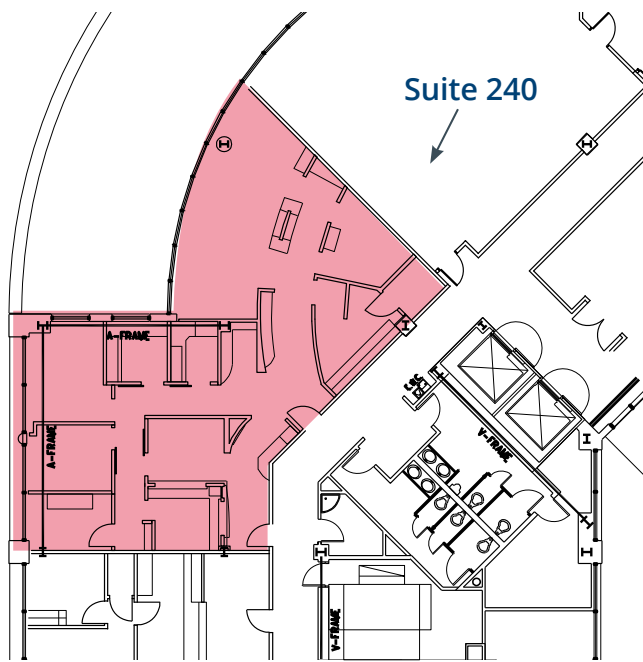
Lease Rate:
\$26.75/SF
 Full Service

- Recently completed lobby, bathroom and common area renovations
- Newly completed U of U Campus Store on-site
- Parking: 4/1,000 SF
- Located in the absolute heart of Sandy City with a plethora of nearby amenities
- Beautiful panoramic mountain and valley views
- Easy I-15 accessibility through 9000 S., 10600 S. and new Monroe St. exit
- Close proximity to TRAX and FrontRunner with connecting bus line to the building
- 350KW Backup generator on-site

Available Spaces

2nd Floor

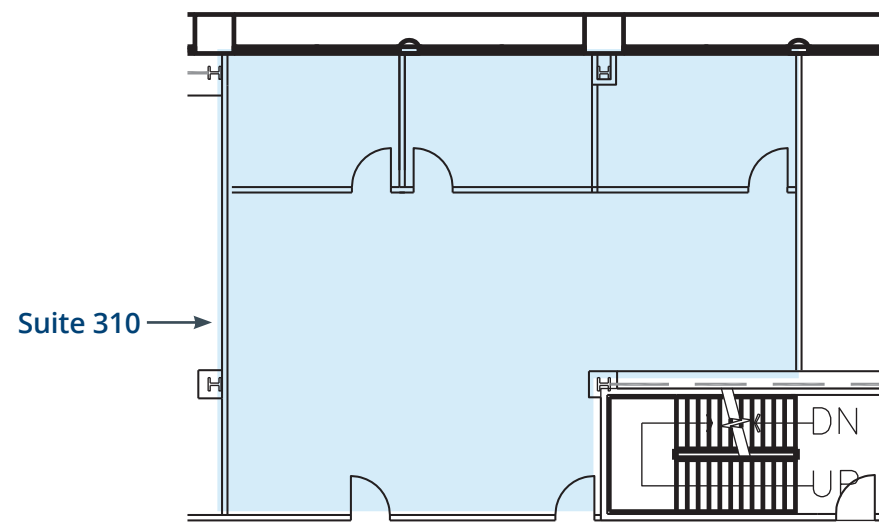
Suite 240 - 2,209 RSF - Medical Office Space



3rd Floor

Suite 310* - 1,705 RSF

*Recently Completed Spec Suite



4th Floor

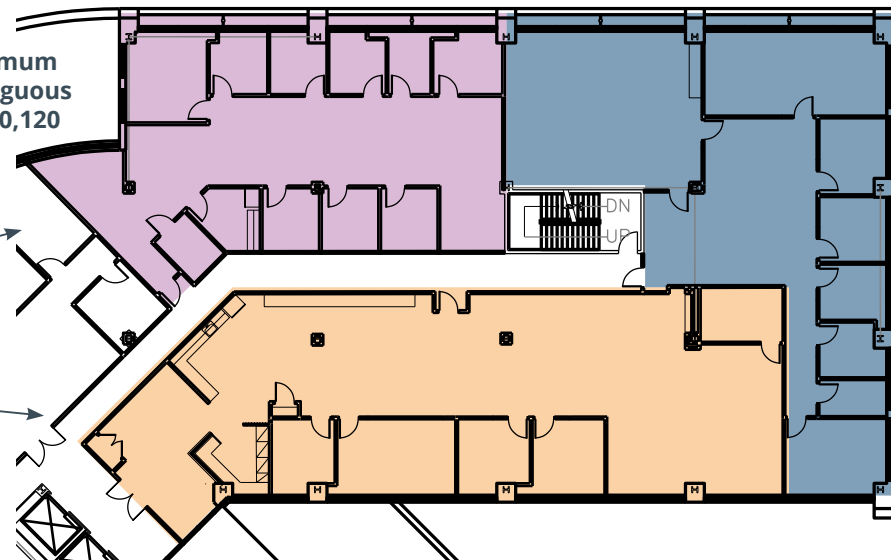
Suite 400 - 3,989 RSF
Suite 410 - 3,260 RSF
Suite 420 - 2,871 RSF

Maximum Contiguous RSF 10,120

Suite 420*
 *Recently Completed Spec Suite

Suite 400*
 *Recently Completed Spec Suite

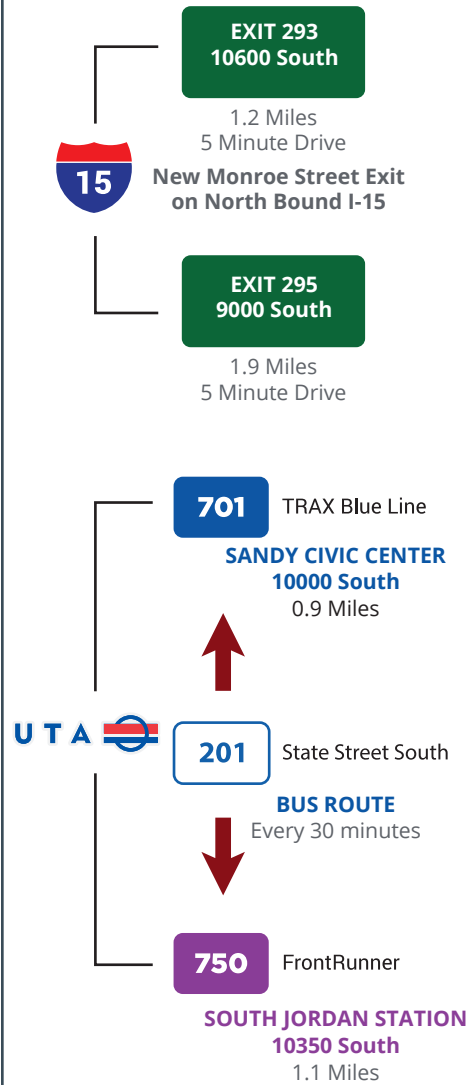
Suite 410*
 *Recently Completed Spec Suite



Fiber Connectivity



Access to Transportation



Nearby Amenities

