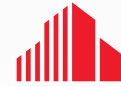


OFFICE SPACE FOR LEASE

# MOUNTAIN STATES BUILDING

289 24th Street, Ogden, UT 84401



CUSHMAN &  
WAKEFIELD



## Property Highlights

- Available - Suite 150: 2,286 SF
- Lease Rate: \$13.00 PSF/NNN
- Estimated CAM: \$6.23 PSF
- Ample parking
- Excellent location on the corner of 24th and Grant just off of the I-15 24th street freeway onramp
- Located next to the Marriott Hotel and the Federal building within walking distance to many amenities on 25th Street and at the Junction



## Contact

### **JULIE BROWN**

Senior Associate  
+1 801 784 5317  
julie.brown@cushwake.com

### **APRIL HARTZELL**

Associate  
+1 801 784 5319  
april.hartzell@cushwake.com

2225 Washington Blvd, #175  
Ogden, Utah 84401  
Main +1 801 525 3000  
[cushmanwakefield.com](http://cushmanwakefield.com)

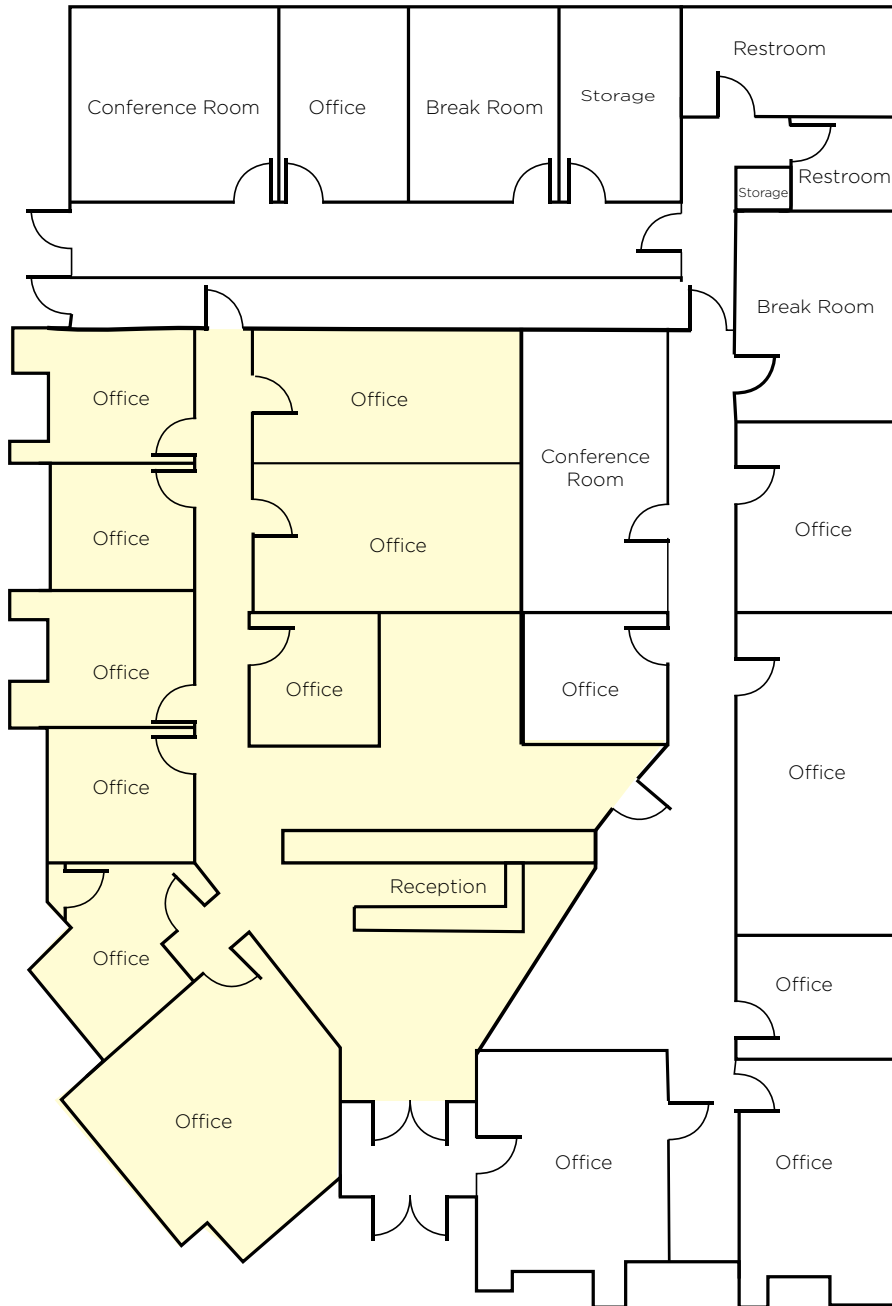


# OFFICE SPACE FOR LEASE

Mountain States Building | 289 24th Street, Ogden, UT



## FLOOR PLAN - SUITE 150 | 2,286 SF



### Contact

**JULIE BROWN**  
Senior Associate  
+1 801 784 5317  
julie.brown@cushwake.com

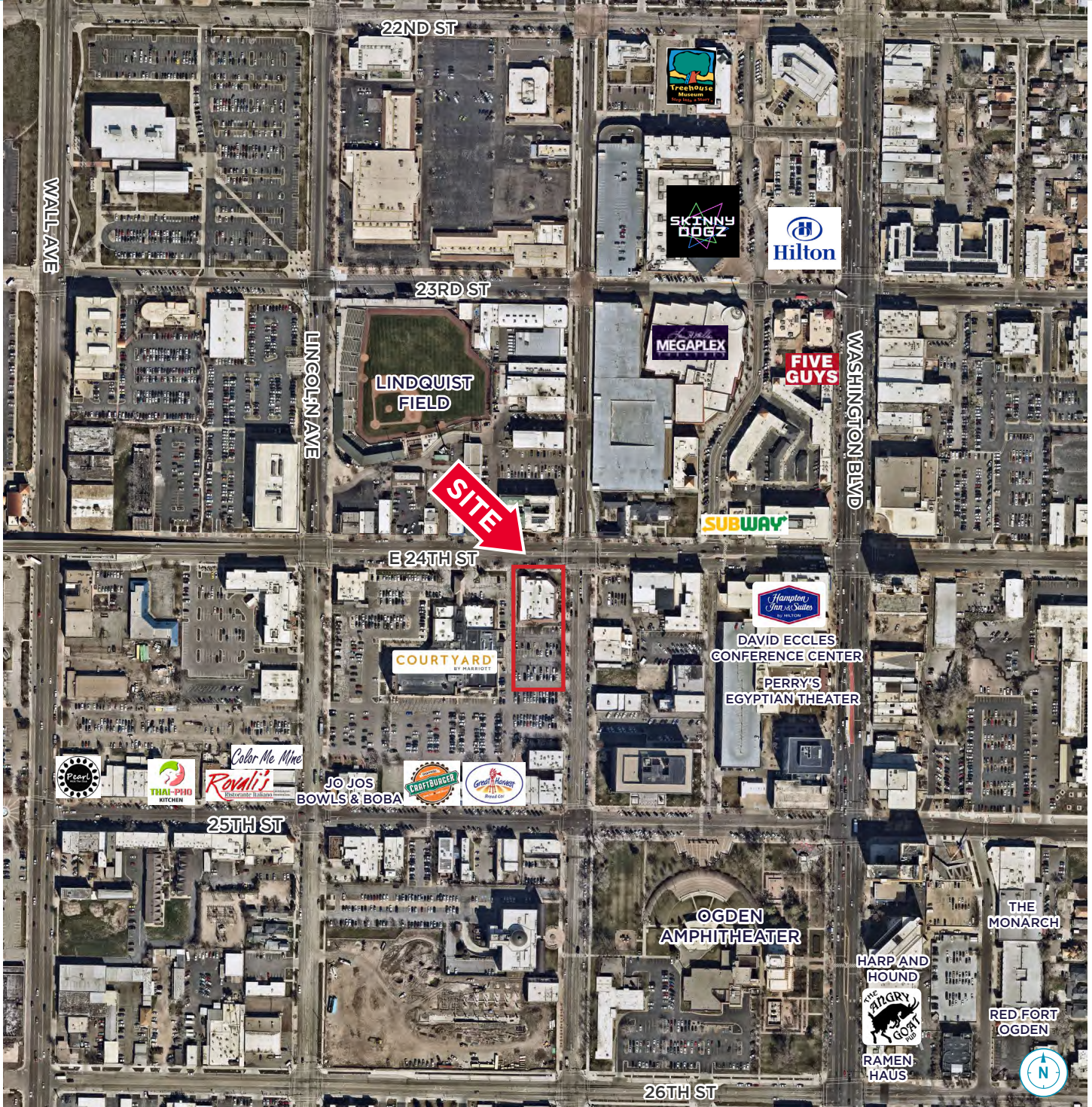
**APRIL HARTZELL**  
Associate  
+1 801 784 5319  
april.hartzell@cushwake.com

2225 Washington Blvd, #175  
Ogden, Utah 84401  
Main +1 801 525 3000  
**cushmanwakefield.com**



**FOR LEASE**

Mountain States Building | 289 24th Street, Ogden, UT



**Contact**

**JULIE BROWN**  
Senior Associate  
+1 801 784 5317  
julie.brown@cushwake.com

**APRIL HARTZELL**  
Associate  
+1 801 784 5319  
april.hartzell@cushwake.com

2225 Washington Blvd, #175  
Ogden, Utah 84401  
Main +1 801 525 3000  
[cushmanwakefield.com](http://cushmanwakefield.com)