

# SOONER PLAZA ON WATERLOO

**For Lease**



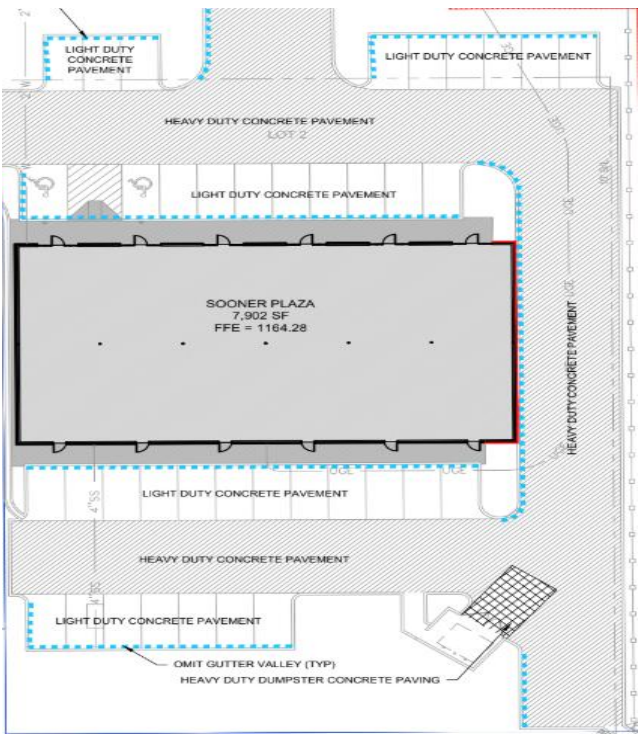
**Tom H Vaught, SIOR**

tom@victorycre.com

C: 405.850.6556

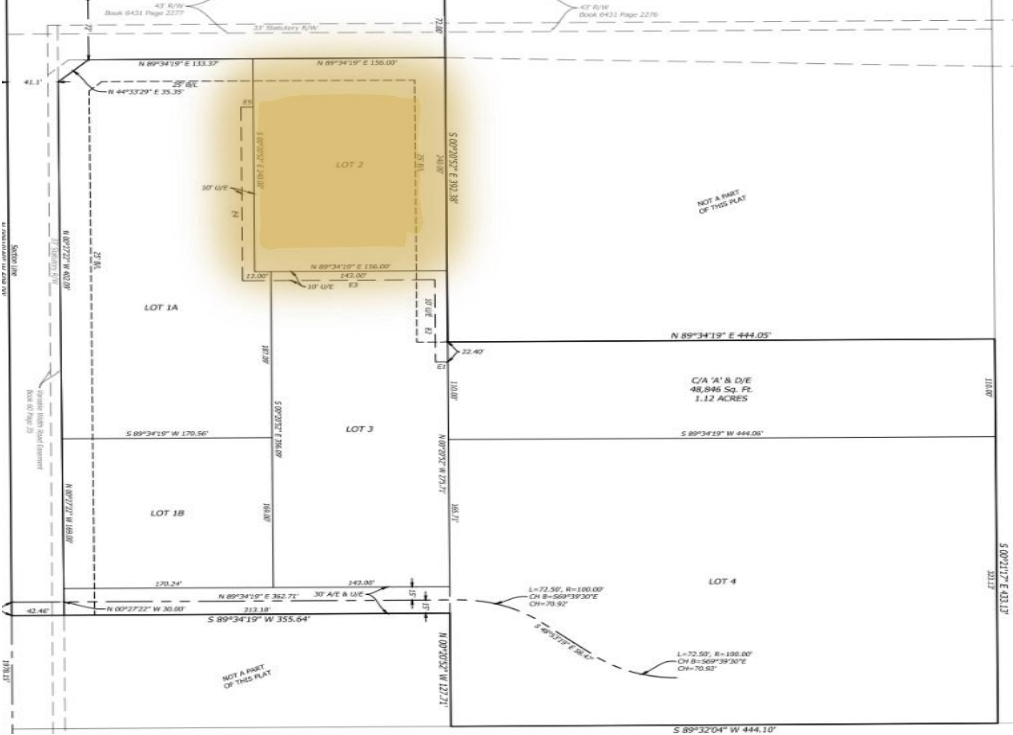
Prime Waterloo & I-35 Corridor  
±7,900 SF Newly Constructed Retail Strip Center





### PROPERTY DETAILS

**Built in 2025, the property is delivered as a brand-new shell that can be subdivided into multiple tenant bays. The building is not sprinklered in its current form, but fire line connections are in place for future tenant needs. The site features fresh perimeter landscaping, parking-lot islands, and new sidewalks for a clean, modern retail environment.**



### SITE DETAILS

Unit Size	1,316-5,266 SF
Building Size	7,900± SF
Parking	38 spaces include 2 ADA
Lease Rate	\$29.50/PSF/NNN

**Tom H Vaught, SIOR**

tom@victorycre.com

C: 405.850.6556

Prime Waterloo & I-35 Corridor  
±7,900 SF Newly Constructed Retail Strip Center





# NEARBY AMENITIES



Tom H Vaught, SIOR

tom@victorycre.com

C: 405.850.6556

Prime Waterloo & I-35 Corridor

±7,900 SF Newly Constructed Retail Strip Center





# PROPERTY LOCATION



**Tom H Vaught, SIOR**

tom@victorycre.com

C: 405.850.6556

Prime Waterloo & I-35 Corridor  
±7,900 SF Newly Constructed Retail Strip Center

