

Mendota Plaza

750 Highway 110, Mendota Heights, MN 55120



Zac Hoang
zac.hoang@jll.com
612 217 5156

Jeremy Grittner
jeremy.grittner@jll.com
612 217 6722

Jack Whitcomb
jack.whitcomb@jll.com
612 217 5122



Property highlights

- Walgreens anchored retail center
- Proposed redevelopment of existing grocery endcap
- Targeting restaurants, breweries, distilleries, and other retail uses
- Prominent pylon signage available
- Adjacent to new 139-unit luxury apartment complex

Site information

Location: 750 Highway 110, Mendota Heights, MN 55120

Description: 52,887 SF Retail Strip Center

Expenses

CAM: \$6.73

RE Taxes: \$2.62

Traffic counts

Highway 62: 28,500 vpd

Dodd Road: 9,900 vpd

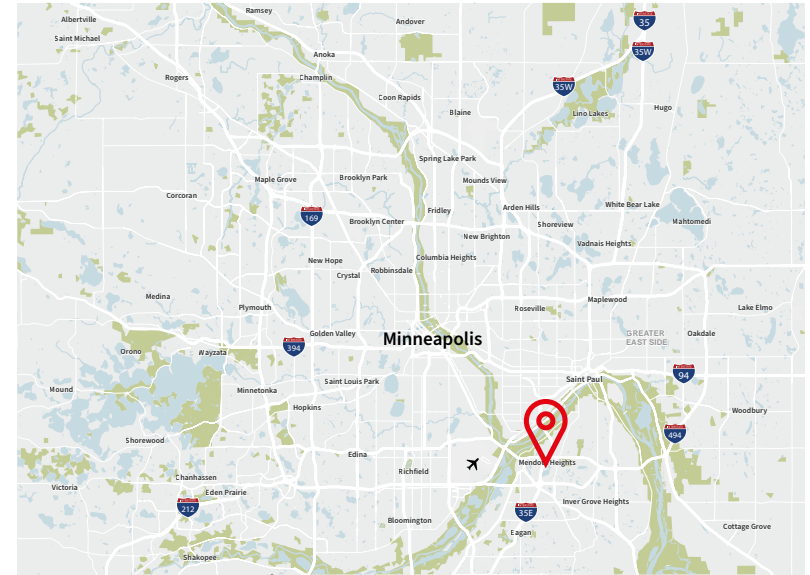
Availability

1,227 - 19,204 SF

Demographics

Radius	1 Mile	3 Mile	5 Mile
Population	4,548	52,198	224,107
Median HH Income	\$129,218	\$77,377	\$79,094
Average HH Income	\$184,078	\$116,633	\$112,541

* Source: 2022 Esri Forecasts based on The Census 2000 and 2010 data converted by Esri into 2020 geography



Nearby Tenants



Trade area



Site plan

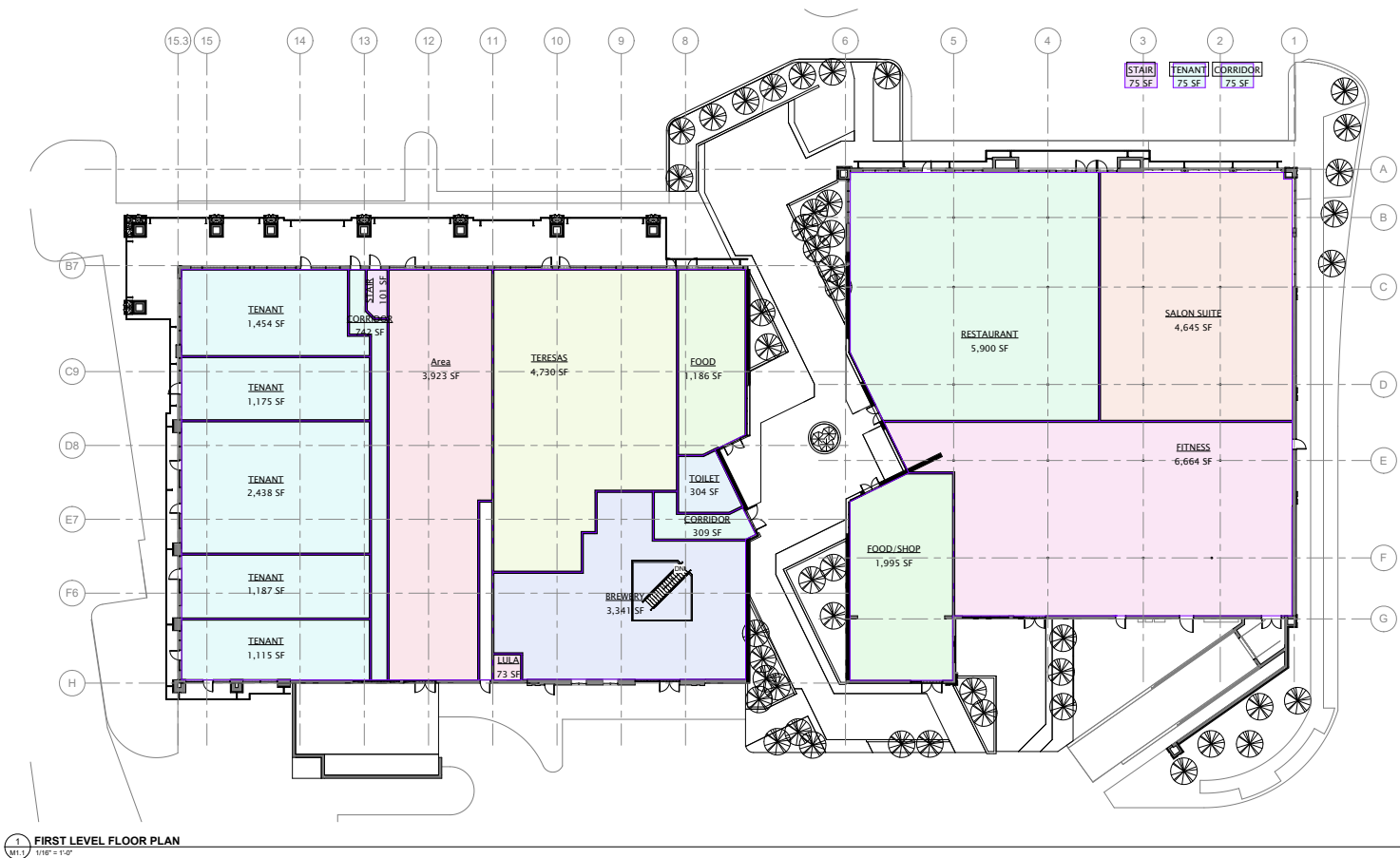


SUITE	TENANT	SQUARE FOOTAGE
752	AVAILABLE Former Grocery w/ Dock	8,488 SF
754	Haiku Japanese Bistro	2,856 SF
756	Anytime Fitness	7,683 SF
758	AVAILABLE	3,200 SF
760	King and I Thai	3,046 SF
762	Teresa's Mexican Restaurant	6,571 SF
766	Mendota Liquor Barrel	3,650 SF
768	Subway	1,567 SF
770	Brighter Minds	1,310 SF
772	Enchanted Nails Spa	1,144 SF
774	AVAILABLE Second Generation Office	1,227 SF
776	Hush Therapeutic Massage	1,227 SF
778	St. Croix Cleaners	1,208 SF
780	AVAILABLE	1,869 SF
790	Walgreens	14,820 SF

Proposed redevelopment



Redevelopment site plan



CONTACT US >>

Zac Hoang

zac.hoang@jll.com

612 217 5156

Jeremy Grittner

jeremy.grittner@jll.com

612 217 6722

Jack Whitcomb

jack.whitcomb@jll.com

612 217 5122