

For Lease

Office Space at Jewish Community Center Campus

1,600 SF | \$29.50 SF Gross



1160 Dickinson Street

Springfield, Massachusetts 01106

Property Highlights

- Ample free parking
- Accessible to major transportation routes
- Easily accessible from I-91, Route 5
- At the intersection of Dickinson and Converse

Property Description

Office space available on the Jewish Community Center Campus in Springfield, MA. Located near Longmeadow and East Longmeadow, this space is suitable for medical, accounting, insurance and other business office use. Tenant and visitors will appreciate the ample parking and well-lit interior spaces.

OFFERING SUMMARY

Available SF	1,600 SF
Building Size	38,994 SF

DEMOGRAPHICS

Stats	Population	Avg. HH Income
0.3 Miles	541	\$121,380
0.5 Miles	1,510	\$150,465
1 Mile	9,084	\$129,784



For more information

Jim Reardon

O: 860 508 2192
jreardon@spotkin.com

For Lease

Office Space at Jewish Community Center Campus

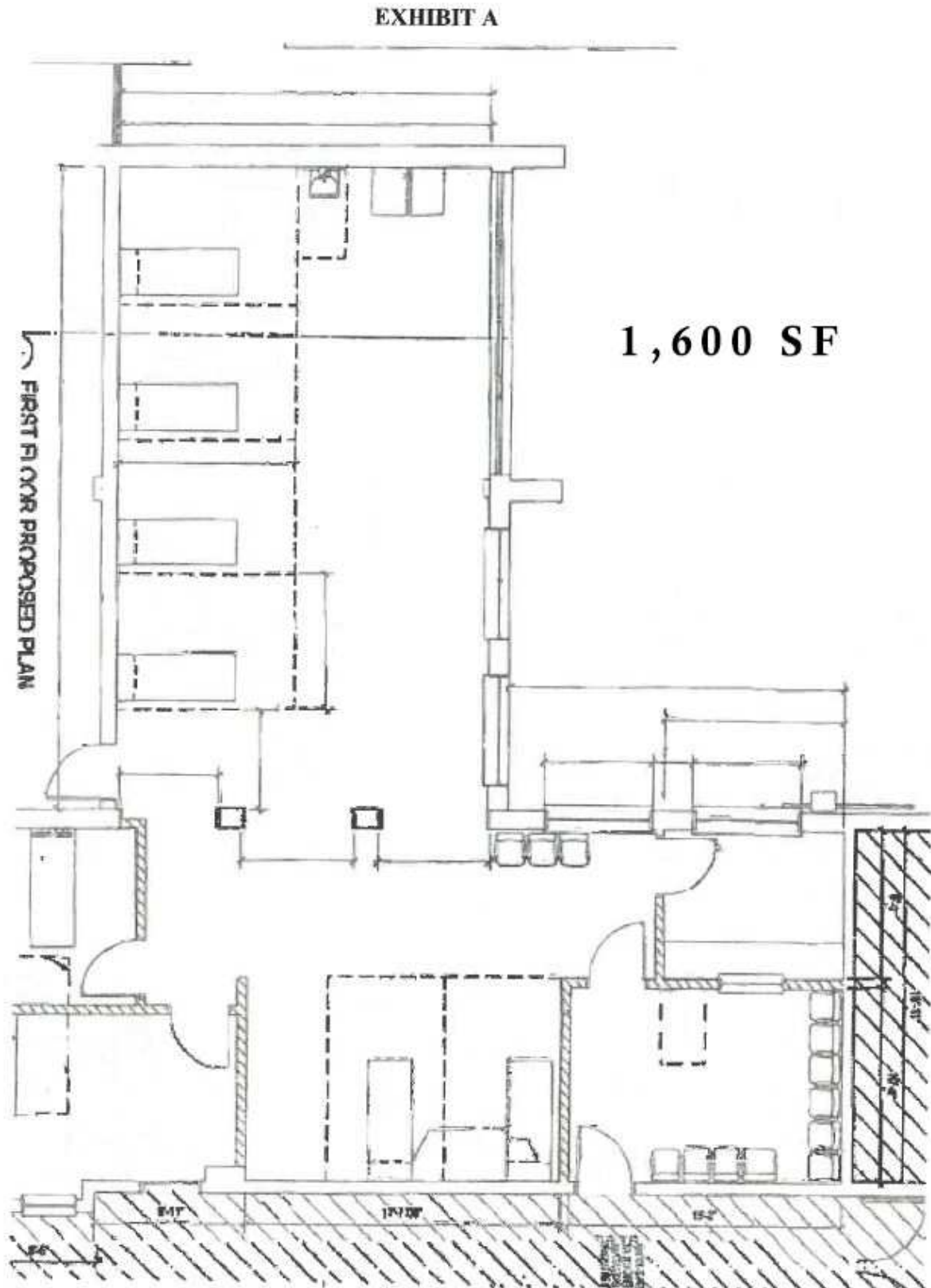
1,600 SF | \$29.50 SF Gross



For Lease

Office Space at Jewish Community Center Campus

1,600 SF | \$29.50 SF Gross



For Lease

Office Space at Jewish Community Center Campus

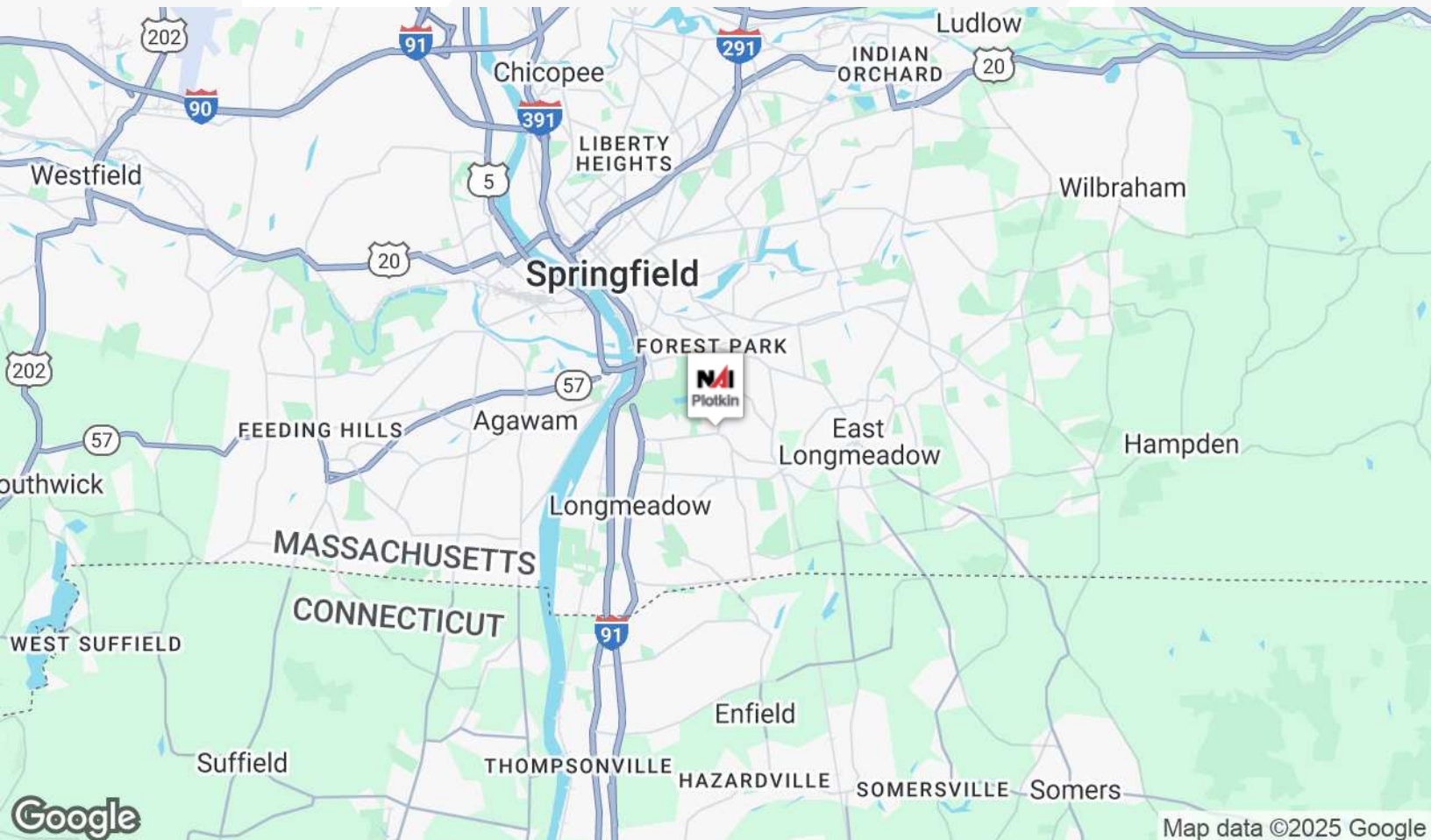
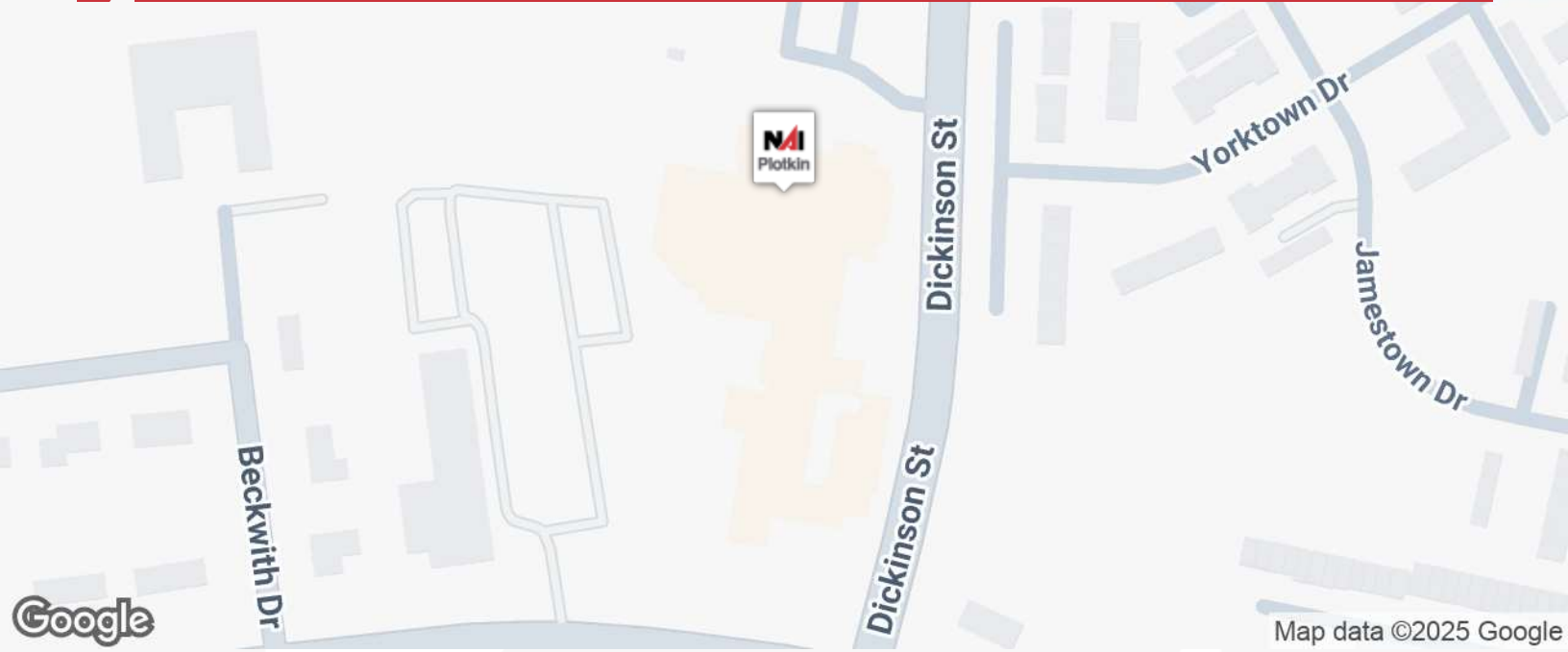
1,600 SF | \$29.50 SF Gross



For Lease

Office Space at Jewish Community Center Campus

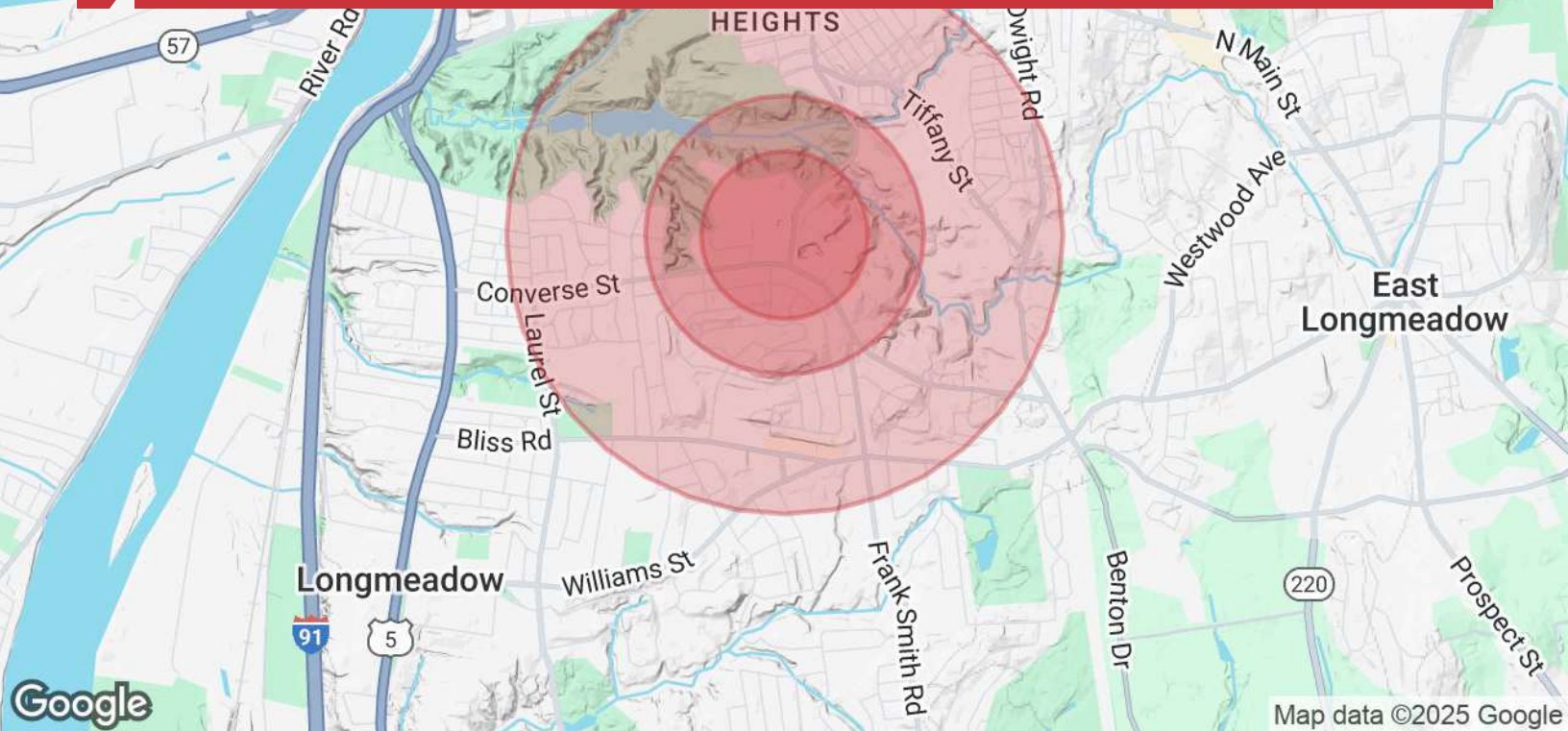
1,600 SF | \$29.50 SF Gross



For Lease

Office Space at Jewish Community Center Campus

1,600 SF | \$29.50 SF Gross



Population

	0.3 Miles	0.5 Miles	1 Mile
TOTAL POPULATION	541	1,510	9,084
MEDIAN AGE	44	44	42
MEDIAN AGE (MALE)	42	42	41
MEDIAN AGE (FEMALE)	46	45	43

Households & Income

	0.3 Miles	0.5 Miles	1 Mile
TOTAL HOUSEHOLDS	234	615	3,470
# OF PERSONS PER HH	2.3	2.5	2.6
AVERAGE HH INCOME	\$121,380	\$150,465	\$129,784
AVERAGE HOUSE VALUE	\$415,504	\$464,517	\$406,422

Race

	0.3 Miles	0.5 Miles	1 Mile
% WHITE	70.2%	75.2%	65.3%
% BLACK	9.3%	7.0%	11.9%
% ASIAN	9.9%	10.2%	11.1%
% HAWAIIAN	0.0%	0.0%	0.0%
% INDIAN	0.4%	0.3%	0.3%
% OTHER	10.1%	7.2%	11.3%

Ethnicity

	0.3 Miles	0.5 Miles	1 Mile
% HISPANIC	21.6%	15.7%	21.9%

* Demographic data derived from 2020 ACS - US Census