

FOR LEASE | RETAIL

Lexington Retail

1789 Lexington Avenue N, Suite B, Roseville, MN 55113



Available now, 1,880 SF in a prime neighborhood retail center in Roseville located on the corner of Lexington Avenue and Larpenteur Avenue in close proximity of Cub Foods, Aldi, Keys Cafe and numerous other restaurants, stores and amenities.

Property Features

- 1,880 SF retail and / or office
- Next to Great Clips
- Open area with a small office or storeroom
- Private restroom
- Near busline
- Net rate - \$19 psf
- CAM & tax \$7.45 psf
- Estimated monthly gross rent of \$4,144 / month

Contact Us

BEN BRUNO
Brokerage Services



651.621.2563
ben@terracegroupllc.com

TONY ROSSATO
Brokerage Services



651.621.2507
tony@terracegroupllc.com

ERIC DUEHOLM
Partner



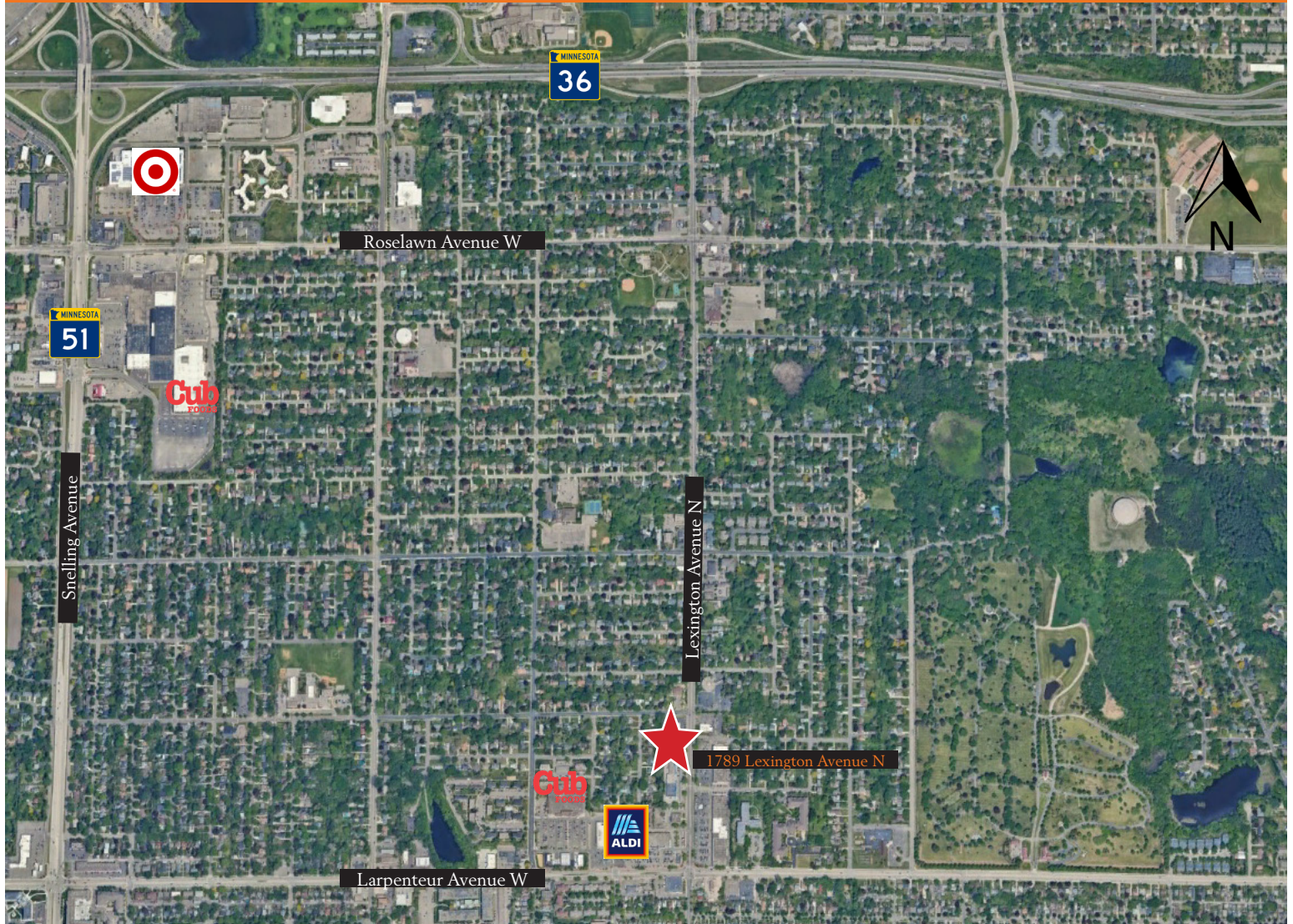
651.621.2550
eric@terracegroupllc.com

Full Property Information at:
lexingtonretail.com

FOR LEASE | RETAIL

Lexington Retail

1789 Lexington Avenue N, Suite B, Roseville, MN 55113



Destinations

Downtown Saint Paul
Downtown Minneapolis
MSP International Airport
Mall of America

Drive Time

11 minutes
17 minutes
25 minutes
28 minutes

BEN BRUNO
Brokerage Services

651.621.2563
ben@terracegrouppllc.com

TONY ROSSATO
Brokerage Services

651.621.2507
tony@terracegrouppllc.com

ERIC DUEHOLM
Partner

651.621.2550
eric@terracegrouppllc.com

Full Property Information at:
lexingtonretail.com

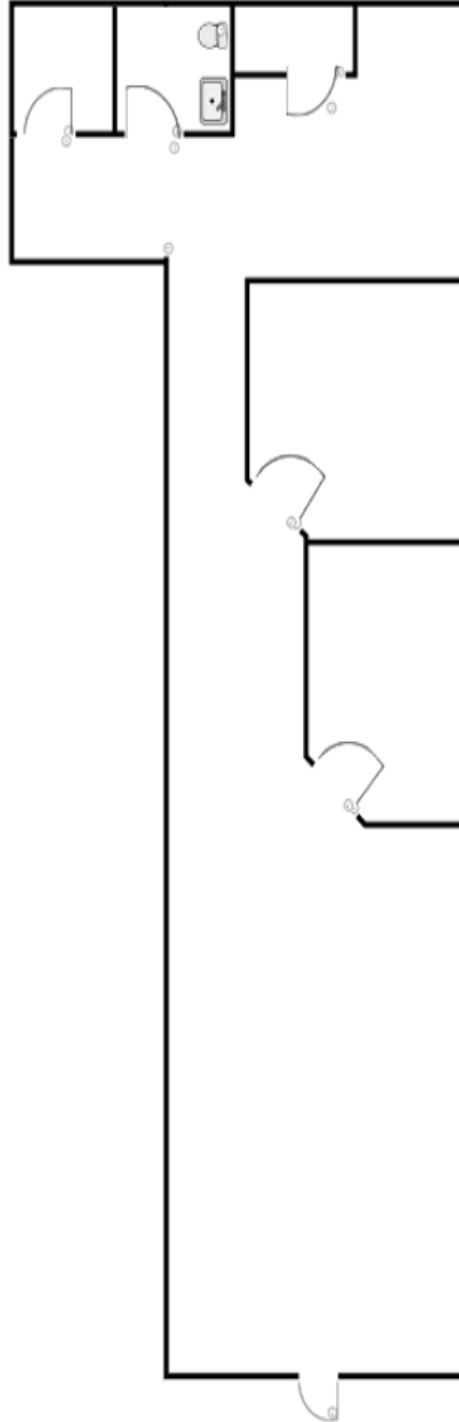
FOR LEASE | RETAIL

Lexington Retail

1789 Lexington Avenue N, Suite B, Roseville, MN 55113



Floor Plan



BEN BRUNO
Brokerage Services

651.621.2563
ben@terracegroupllc.com

TONY ROSSATO
Brokerage Services

651.621.2507
tony@terracegroupllc.com

ERIC DUEHOLM
Partner

651.621.2550
eric@terracegroupllc.com

Full Property Information at:
lexingtonretail.com

FOR LEASE | RETAIL

Lexington Retail

1789 Lexington Avenue N, Suite B, Roseville, MN 55113



Information is deemed reliable; however, no warranty or representation is made as to its accuracy or completeness. Property is subject to price change, prior sale or lease, and withdrawal from the market, all without notice.

BEN BRUNO
Brokerage Services

651.621.2563
ben@terracegroupllc.com

TONY ROSSATO
Brokerage Services

651.621.2507
tony@terracegroupllc.com

ERIC DUEHOLM
Partner

651.621.2550
eric@terracegroupllc.com

Full Property Information at:
lexingtonretail.com