



FOR LEASE

Historic Retail Space

**Evans
Elder
Brown &
Seubert**

COMMERCIAL REAL ESTATE

Stephanie Seubert

stephanie@eebcre.com

Lilly Storment

lilly@eebcre.com

541.345.4860

Licensed in the State of Oregon.

SUITE 106 | ≈ 579 SF

- Ground floor retail
- Building is loaded with character and charm
- Space features tall ceilings, exposed brick & is accessible from the Park & Willamette Streets
- \$1.20/SF/Month, NNN
NNN's approx. \$507/month

Smeede Hotel Building
776 West Park Street
Eugene, Oregon 97401

Historic Retail | ≈579 SF

Historic Smeede Building | Suite 106
776 West Park Street, Eugene OR 97401

Evans
Elder
Brown &
Seubert

COMMERCIAL REAL ESTATE

CONTACT

**Stephanie
Seubert**

stephanie@eebcre.com

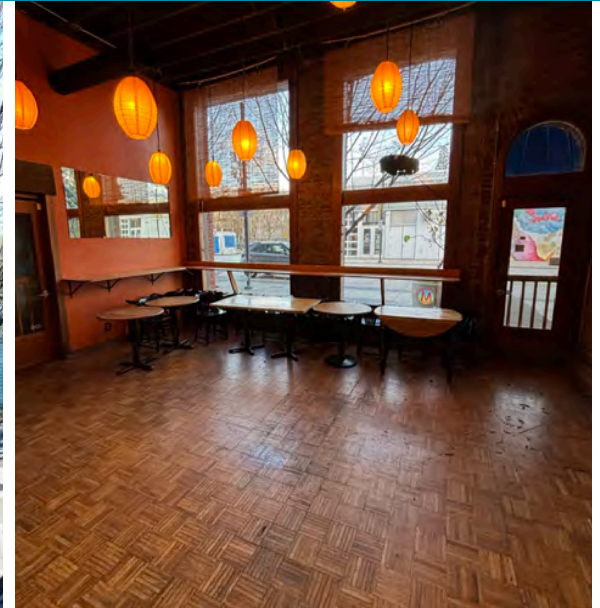
**Lilly
Stormont**

lilly@eebcre.com

541.345.4860

101 East Broadway
Suite #101
Eugene, OR 97401

Licensed in the
State of Oregon.



The information in this package was gathered from sources deemed reliable, however Evans Elder Brown & Seubert makes no representation or warranty of the accuracy of the information. Any buyer or tenant considering a purchase or lease of this property should confirm any and all information relied upon in making the decision to purchase or lease prior to finalizing the transaction and bears the risk of all inaccuracies.