

GWINNETT 316

NORTHEAST ATLANTA
GA-316/LAWRENCEVILLE

665 Raco Drive | Suite A
Lawrenceville, GA 30046



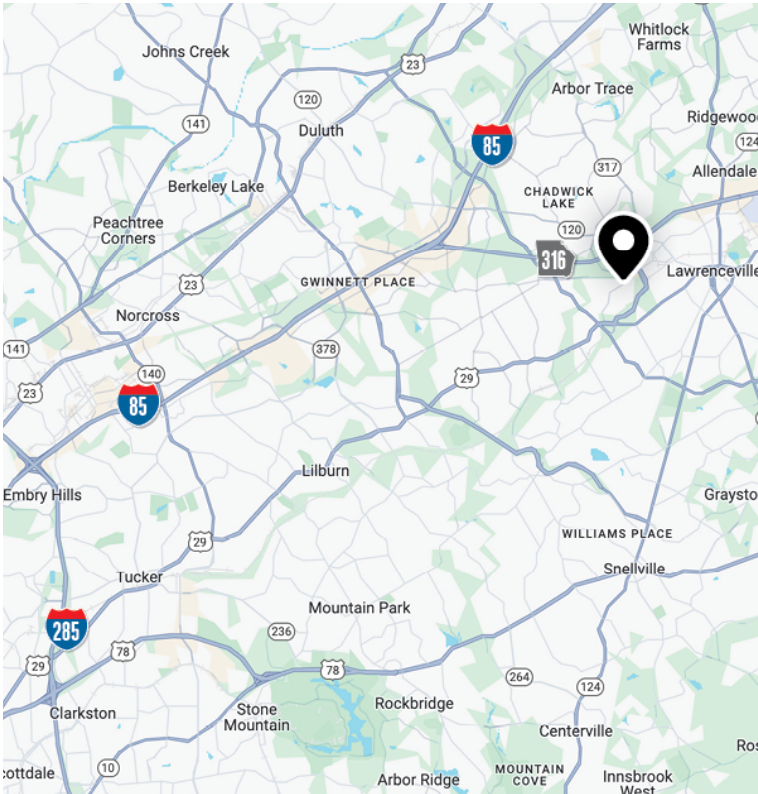
FOR LEASE

SUITE A

56,000 SF



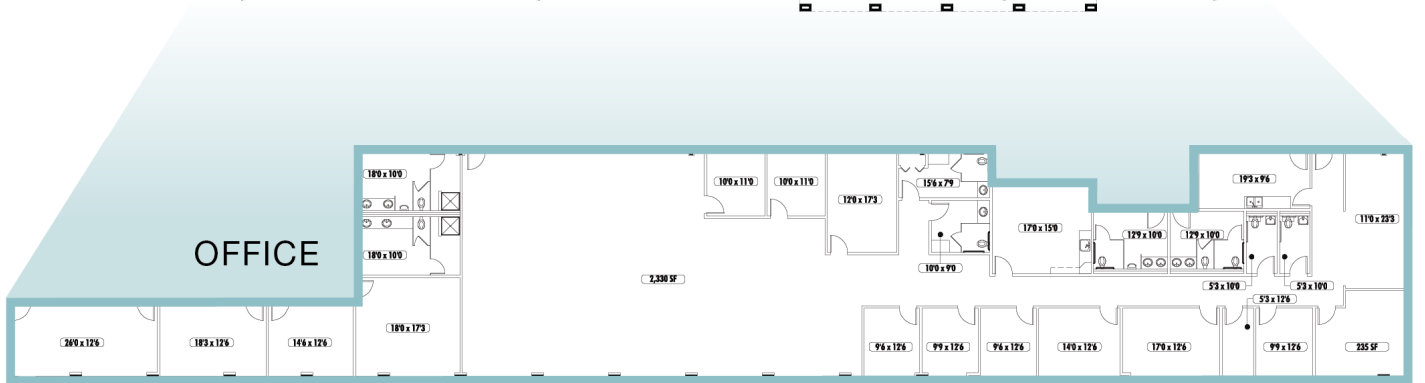
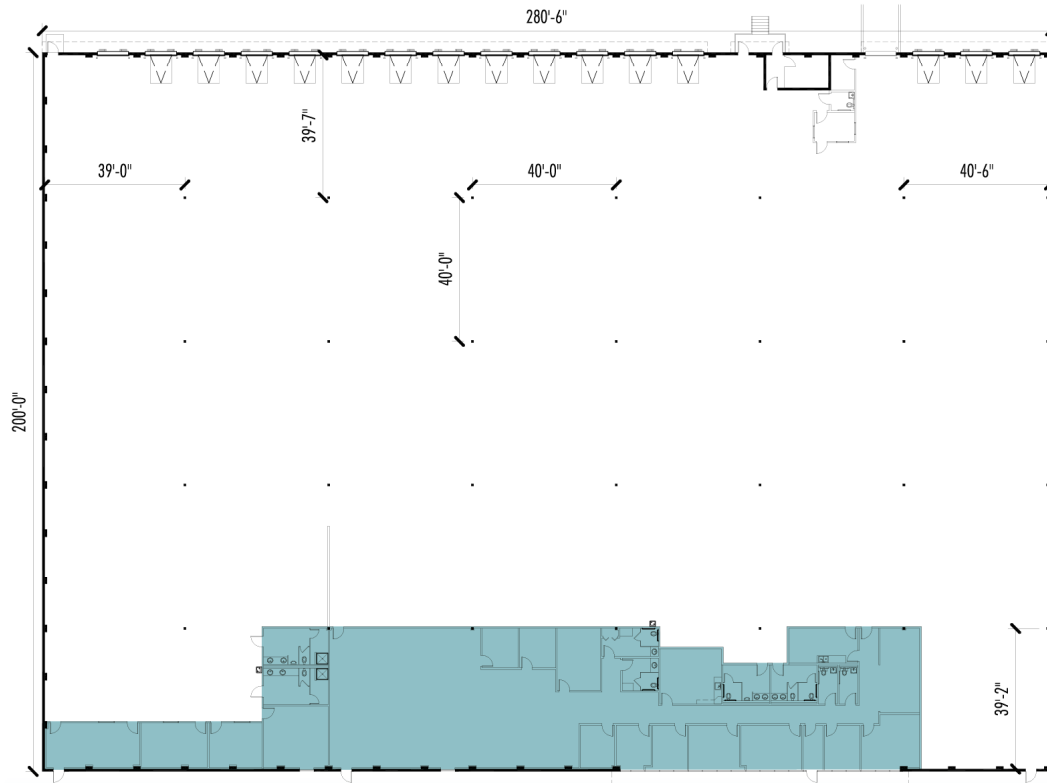
LEASED BY **NAI**BrannenGoddard



SPECIFICATIONS

Building Size	200,000 SF
Available	56,000 SF
Office	7,988 SF
Clear Height	26'
Dock-High Doors	16
Mechanical Pit Levelers	15
Drive-In Door	1
Column Spacing	40' x 40'
Parking	1.00/1,000 SF
Sprinkler	Non-ESFR
Power	3 Phase, 600 Amps
Lighting	LED

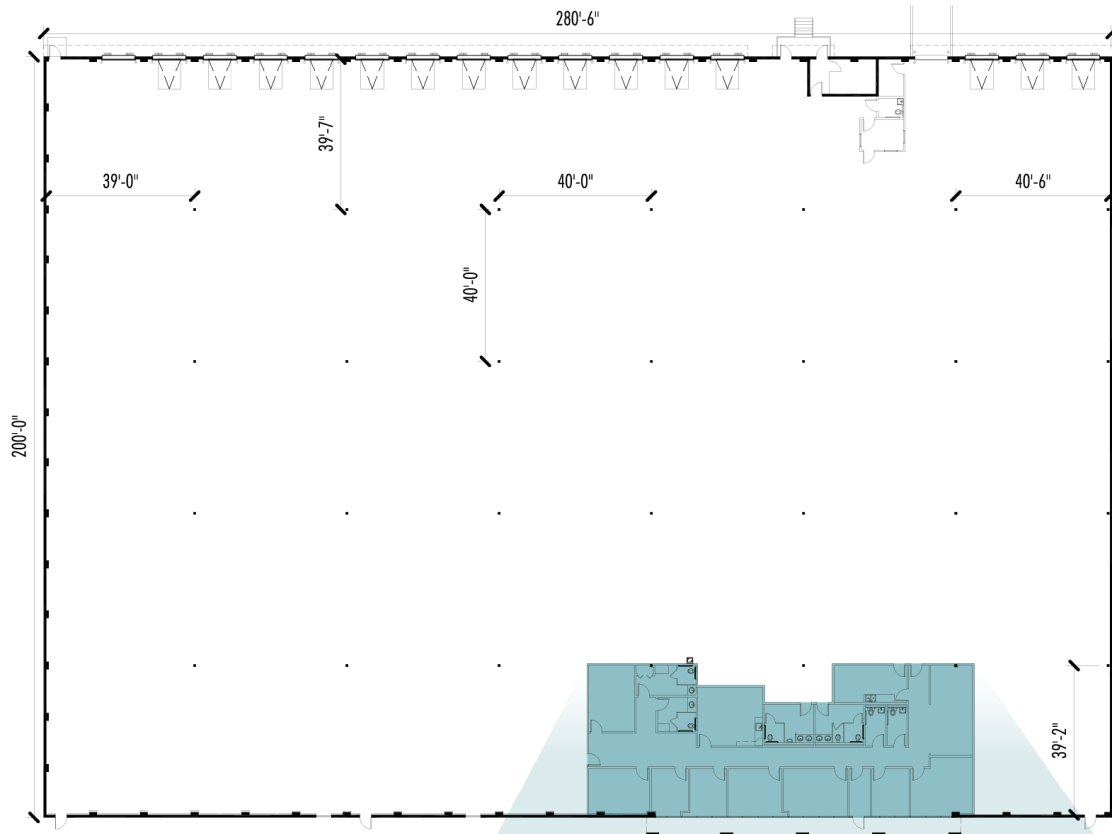
KEY



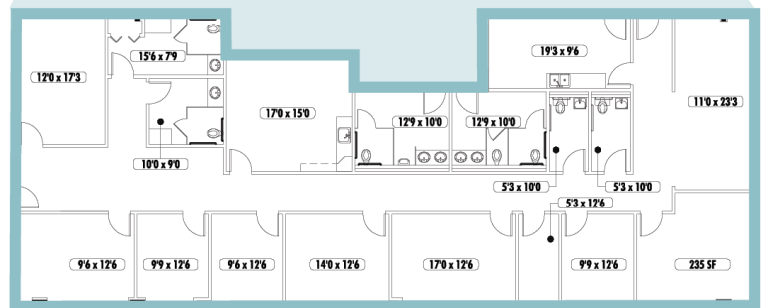
SUITE A	
OFFICE SF	7,988
WAREHOUSE SF	48,012
TOTAL SF	56,000

POTENTIAL DEMO PLAN

KEY



SUITE A	
OFFICE SF	±3,815
WAREHOUSE SF	52,185
TOTAL SF	56,000



OFFICE



CONTACT INFORMATION

665 Raco Drive | Suite A
Lawrenceville, GA 30046

Walker Adams

wadams@naibg.com
(404) 812-4066

Nathan Anderson

nanderson@naibg.com
(404) 812-4020

Charlie Adams

cadams@naibg.com
(404) 812-4037

Griffin Price

gprice@naibg.com
(404) 812-4094

This document is for informational purposes only and does not constitute an offer or acceptance of a lease. Any lease agreement must be in writing and signed by the landlord. No representations or warranties are made except as expressly stated in a signed lease. Information is provided "as is" and may be subject to errors or change without notice.

