

For Lease

±1,624 SF

Industrial Space



Belvedere West Industrial Park

999 Stinson Way, Suite 306 | West Palm Beach, FL 33411

Property Features

- Situated in an updated and well-maintained industrial park
- Features an air-conditioned office space and mezzanine
- Includes a 10' x 12' electric roll-up door, impact glass, and a security system
- Secure entrance with 2 reserved parking spaces in front of unit
- \$29/SF MG + electric

For more information:

Patrick Almand, Associate
C: 443 370 8665 | palmand@mhcreal.com

Key Highlights



10' X 12' roll-up door
with 24' ceilings



Updated space with a
private restroom



Central Palm Beach County
location just minutes from
the Florida Turnpike



FOR LEASE: BELVEDERE WEST INDUSTRIAL PARK, SUITE 306

±1,624 SF Industrial Space Now Available



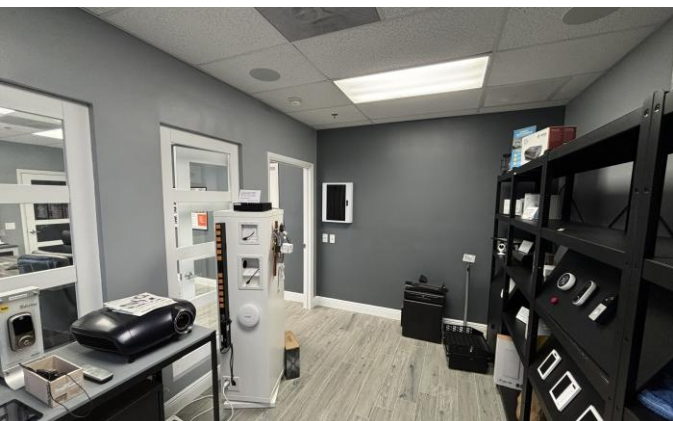
WAREHOUSE SPACE



FLEXIBLE LAYOUT:

- 870 SF Main Warehouse with roll-up door
- 377 SF Main Office/Conference Room
- 377 SF Mezzanine Office/Storage

PRIME LOCATION: Well-positioned off Belvedere Road, with quick access to SR-7/US 441, Okeechobee Boulevard, and the Florida Turnpike.



OFFICE SPACE




Demographics: 1 Mile 3 Miles 5 Miles

Total Population	7,412	65,788	227,775
Avg. HH Income	\$96,954	\$132,874	\$110,878
Households	2,752	24,262	86,978

Patrick Almand, Associate
C: 443 370 8665 | palmand@mhcreal.com

Call today for more information!

 **561 471 8000**