

TROMPETER

SERHANT.

**Commercial Space
For Lease**

312 Washington St
HOBOKEN, NJ, 07030

S.

Overview



312 Washington St, Hoboken, NJ

LEASE RATE

\$130 NNN SQFT/YR

STREET LEVEL

1,650 SQFT

LOWER LEVEL

1,700 SQFT

FRONTAGE

21' (ENTRY WIDTH 17'5")

SERHANT. is pleased to present 1,650 SF of prime retail space at 3rd & Washington in Hoboken.

Located between Panera Bread and Starbucks, this highly visible storefront sits on one of Hoboken's premier retail blocks; a destination for food, fashion, and beauty. Surrounded by leading national brands including Lululemon, Sephora, Abercrombie & Fitch and Madewell, and the space benefits from exceptional co-tenancy and steady pedestrian traffic along Washington Street. A rare opportunity to secure prime frontage in Hoboken's most sought-after retail corridor

PROPERTY HIGHLIGHTS:

- Ceiling Height: 9'4" - 13'
- 1700 Sq Ft Basement with 7'8" Ceiling Height
- Located near the PATH Station to NYC, Scenic Pier A Park & Waterfront and the Ferry Terminal.

Angela Vartuli
Licensed Real Estate Salesperson
tel. 201-522-2356
Angela.Vartuli@serhant.com



We obtained the information above from sources we believe to be reliable. However, we have not verified its accuracy and make no guarantee, warranty or representation about it. It is submitted subject to the possibility of errors, omissions, change of price, rental or other conditions, prior sale, lease or financing, or withdrawal without notice.

SERHANT NJ LLC. | 201-522-2356 | 355 Varick St. Jersey City, NJ, 07302 | serhant.com

Bird's Eye View



Neighboring Retail



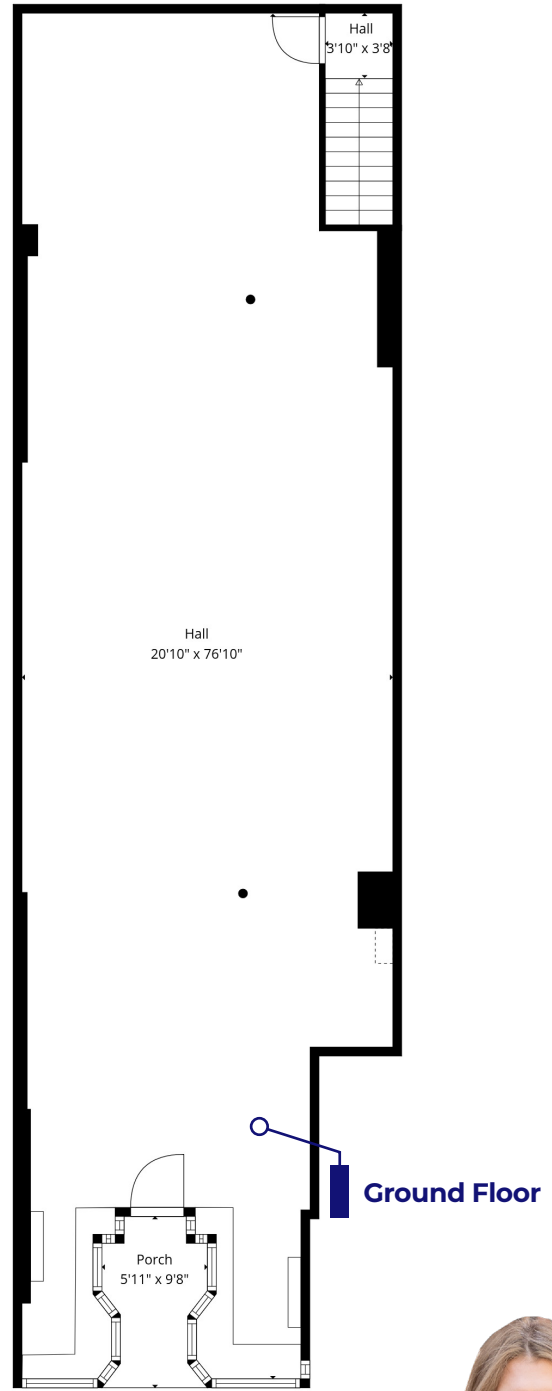
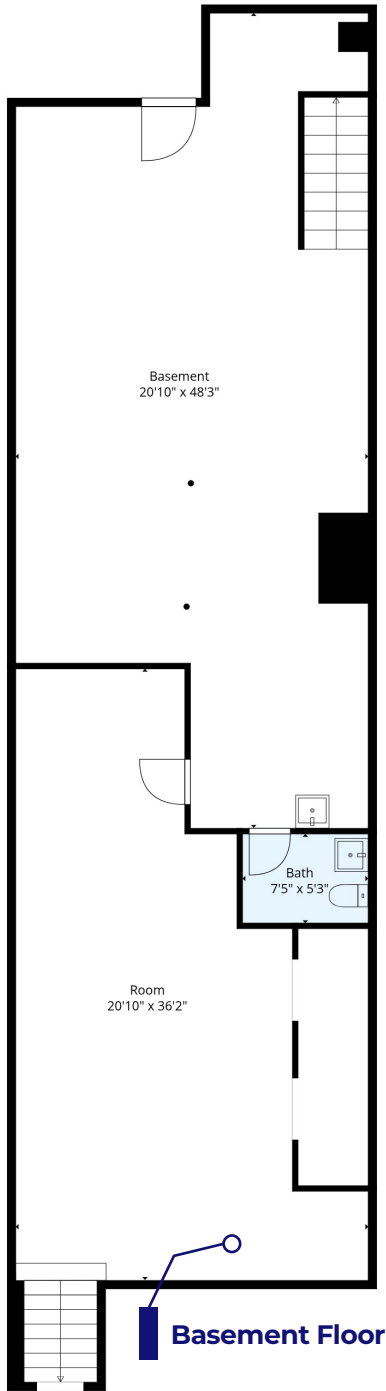
Drone photo of Washington Street, Hoboken with views of the NYC & Jersey City Skyline. Local businesses include: SEPHORA, Lululemon, Starbucks, Panera Bread, Abercrombie & Fitch, Chipotle, Mamoun's Falafel, CityMD, and Quality Greens just to name a few.

Angela Vartuli
Licensed Real Estate Salesperson
tel. 201-522-2356
Angela.Vartuli@serhant.com



We obtained the information above from sources we believe to be reliable. However, we have not verified its accuracy and make no guarantee, warranty or representation about it. It is submitted subject to the possibility of errors, omissions, change of price, rental or other conditions, prior sale, lease or financing, or withdrawal without notice.

SERHANT NJ LLC. | 201-522-2356 | 355 Varick St. Jersey City, NJ, 07302 | serhant.com



GROUND FLOOR
1,650 SQFT

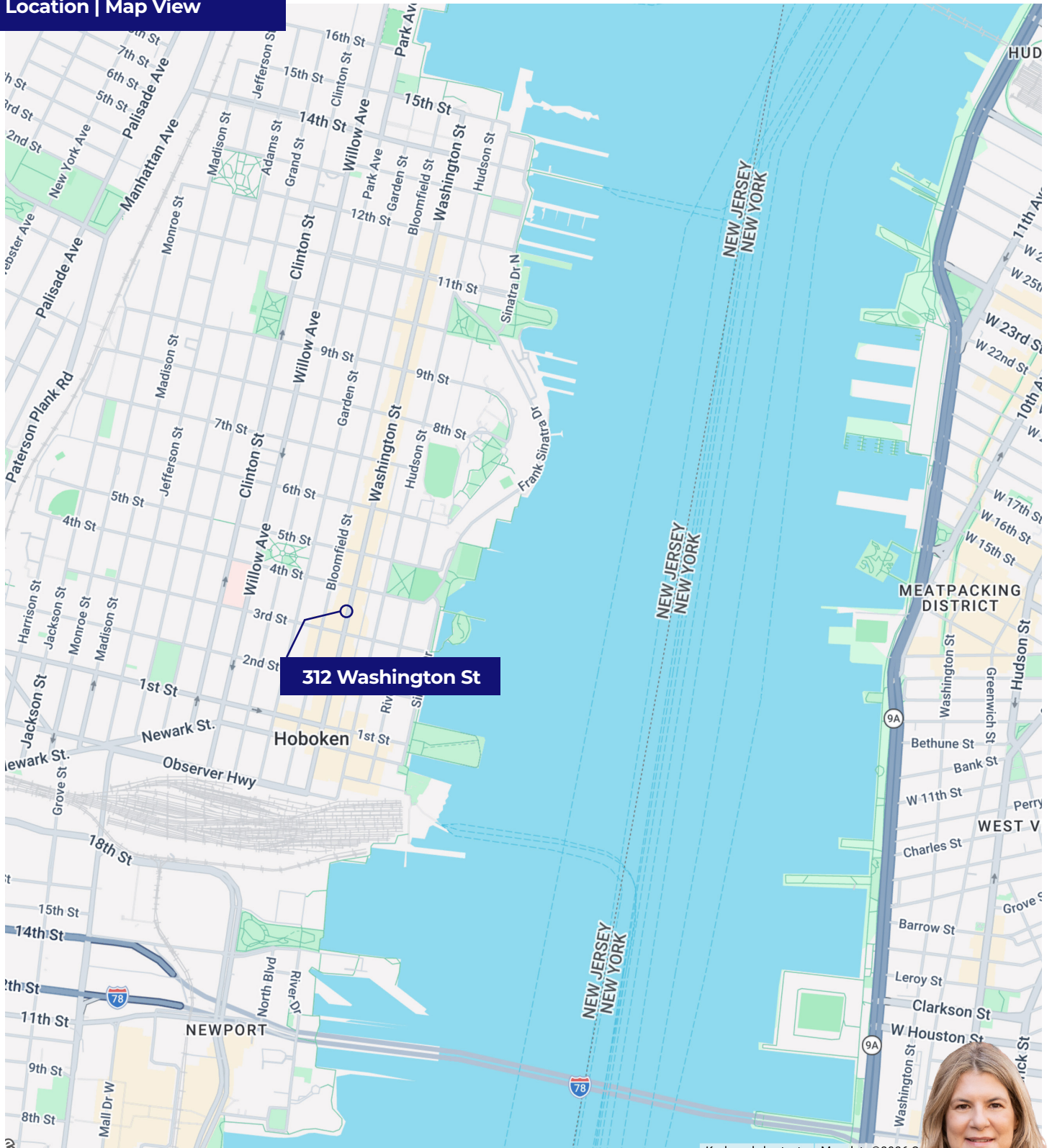
BASEMENT FLOOR
1,700 SQFT

Angela Vartuli
Licensed Real Estate Salesperson
tel. 201-522-2356
Angela.Vartuli@serhant.com



We obtained the information above from sources we believe to be reliable. However, we have not verified its accuracy and make no guarantee, warranty or representation about it. It is submitted subject to the possibility of errors, omissions, change of price, rental or other conditions, prior sale, lease or financing, or withdrawal without notice.
SERHANT NJ LLC. | 201-522-2356 | 355 Varick St. Jersey City, NJ, 07302 | serhant.com

Location | Map View



Located along the city's main retail corridor, this storefront offers exceptional foot traffic, strong visibility, and immediate access to surrounding shops, restaurants, and residential buildings — an ideal setting to capture consistent daily exposure.

Angela Vartuli
Licensed Real Estate Salesperson
tel. 201-522-2356
Angela.Vartuli@serhant.com



We obtained the information above from sources we believe to be reliable. However, we have not verified its accuracy and make no guarantee, warranty or representation about it. It is submitted subject to the possibility of errors, omissions, change of price, rental or other conditions, prior sale, lease or financing, or withdrawal without notice.

SERHANT NJ LLC. | 201-522-2356 | 355 Varick St. Jersey City, NJ, 07302 | serhant.com



Washington Street is known for its steady pedestrian traffic, vibrant mix of boutiques and restaurants, and strong residential density. Just minutes from the PATH train, ferry, and NJ Transit, the location provides seamless access to Manhattan, making it ideal for businesses looking to capture both local clientele and NYC commuters.

Angela Vartuli
Licensed Real Estate Salesperson
tel. 201-522-2356
Angela.Vartuli@serhant.com



We obtained the information above from sources we believe to be reliable. However, we have not verified its accuracy and make no guarantee, warranty or representation about it. It is submitted subject to the possibility of errors, omissions, change of price, rental or other conditions, prior sale, lease or financing, or withdrawal without notice.

SERHANT NJ LLC. | 201-522-2356 | 355 Varick St. Jersey City, NJ, 07302 | serhant.com

TROMPETER | SERHANT.



Angela Vartuli

Licensed Real Estate Salesperson
tel. 201-522-2356
Angela.Vartuli@serhant.com



We obtained the information above from sources we believe to be reliable. However, we have not verified its accuracy and make no guarantee, warranty or representation about it. It is submitted subject to the possibility of errors, omissions, change of price, rental or other conditions, prior sale, lease or financing, or withdrawal without notice.

SERHANT NJ LLC. | 201-522-2356 | 355 Varick St. Jersey City, NJ, 07302 | serhant.com