

Office | For Sublease

**CBRE**

# 8147 Globe Dr

Woodbury, MN 55125

Suite 200: 5,062 RSF Available



## Property Location



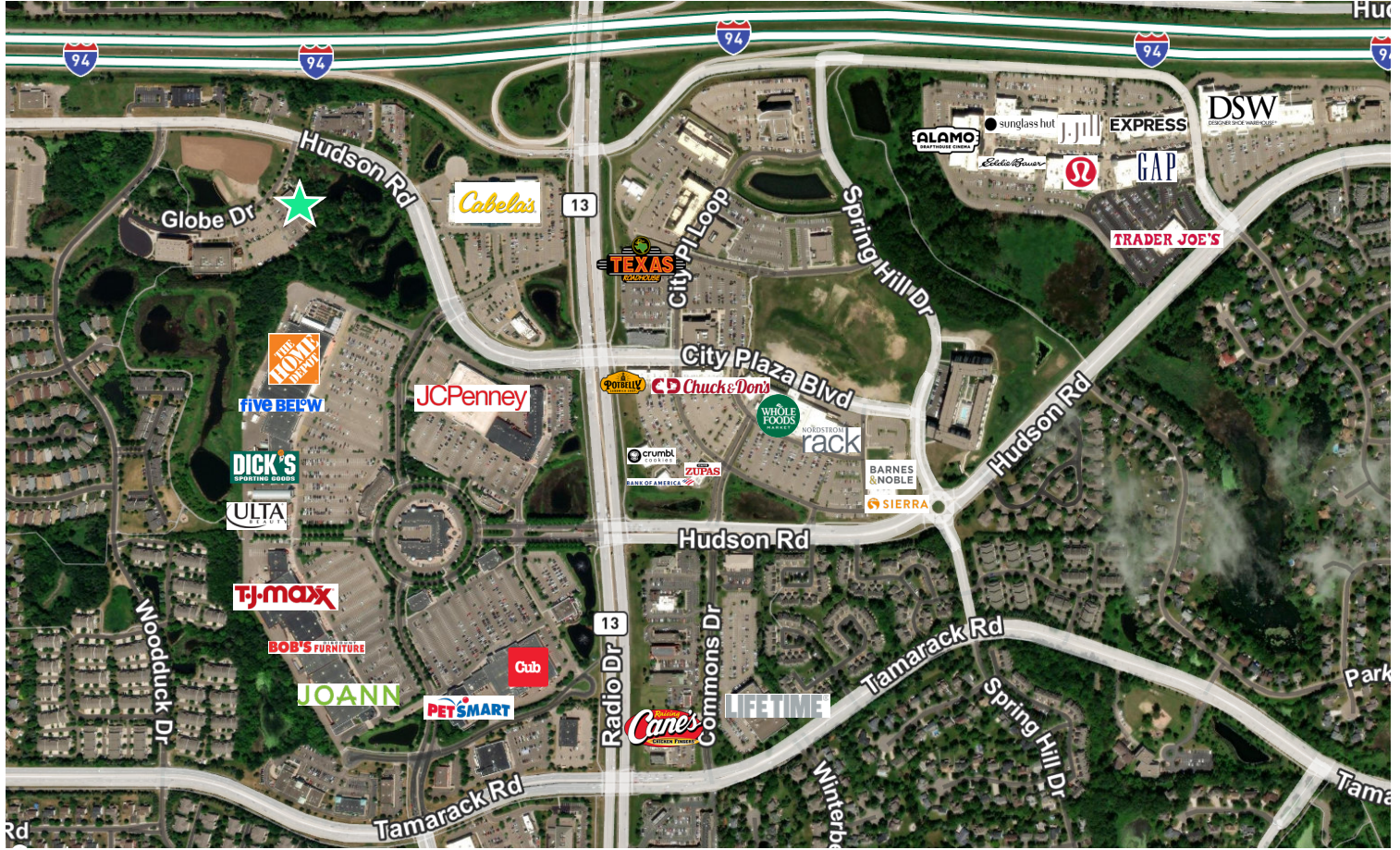
## Property Overview

- + Lease End Date: 8/31/2027
- + Move-in condition
- + Never occupied
- + Brand new finishes
- + Windows on 3 sides/endcap
- + Only vacancy in building
- + Common break/vending space
- + Kitchenette on 1st floor
- + 2 outside walking paths in area
- + Woodbury is a growing city with high household income levels

### Traffic Counts

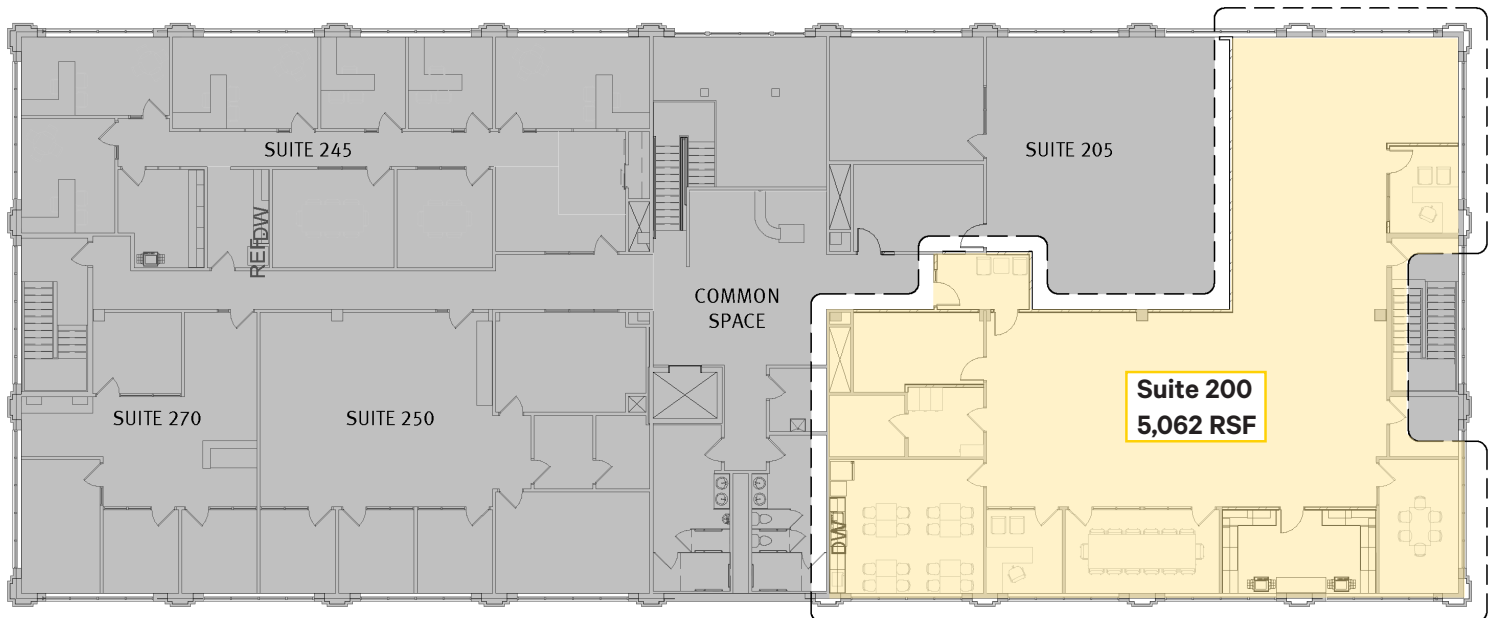
I-94	113,135 VPD
Hudson Rd	13,600 VPD
Cty Hwy 13/Radio Dr	39,312 VPD

# Area Map



# Floor Plan

Suite 200 - 5,062 RSF Available

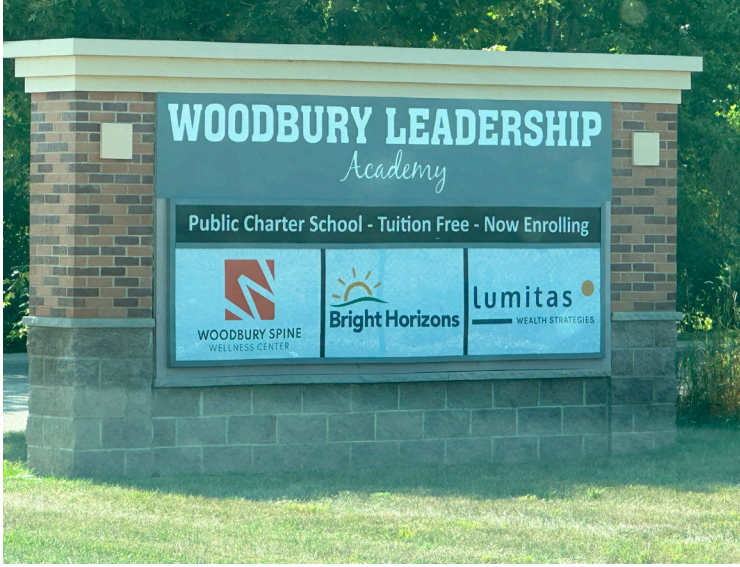


Property Photos



8147 Globe Dr  
Woodbury, MN 55125

For Sublease



## Contact Us

**Jerry Driessen**

First Vice President

+1 612 336 4310

[gerald.driessen@cbre.com](mailto:gerald.driessen@cbre.com)

© 2024 CBRE, Inc. All rights reserved. This information has been obtained from sources believed reliable, but has not been verified for accuracy or completeness. You should conduct a careful, independent investigation of the property and verify all information. Any reliance on this information is solely at your own risk. CBRE and the CBRE logo are service marks of CBRE, Inc. All other marks displayed on this document are the property of their respective owners, and the use of such logos does not imply any affiliation with or endorsement of CBRE. Photos herein are the property of their respective owners. Use of these images without the express written consent of the owner is prohibited.

