



Milbocker Rd | Gaylord, MI 49735

<b>SALE PRICE:</b>	\$150,000
<b>LOT SIZE:</b>	20.0 ACRES
<b>APN #:</b>	102-700-000-002-03
<b>ZONING:</b>	COMMERCIAL

**PROPERTY OVERVIEW**

Approximate 20 acre commercial development parcel on Milbocker Rd. Located in the southwest portion of the City of Gaylord and adjacent to the Gaylord Regional Airport. Close to I-75 access. Gas, electric and municipal water available at street. M-1 zoning allows for a variety of uses.

**PROPERTY HIGHLIGHTS**

- 20 Acre Development Parcel
- Zoned M-1 Manufacturing
- Adjacent to the Airport
- Close to I-75 Access

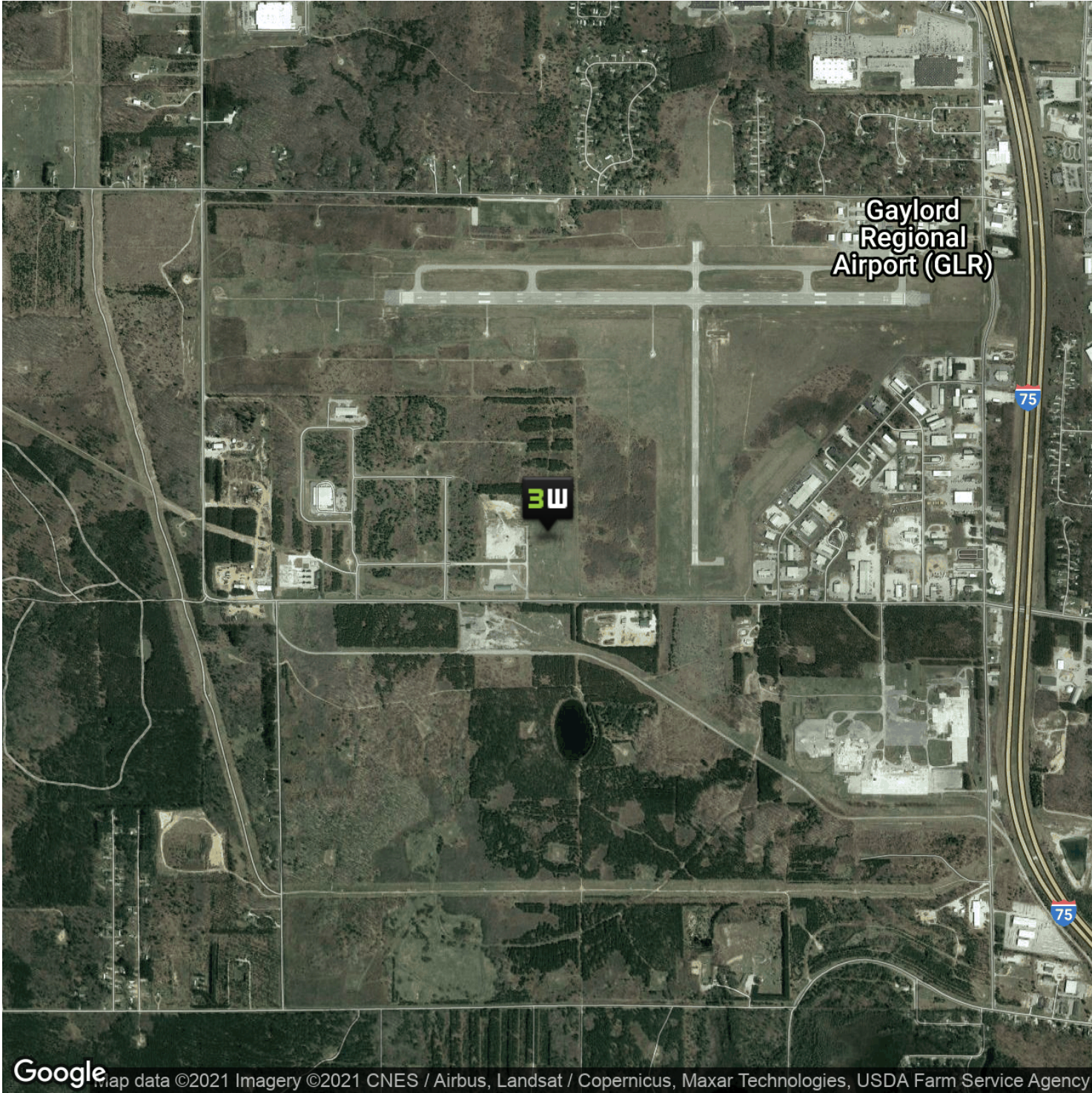
**BILL SOMERVILLE** | Associate | Realtor | 231.929.2955 | bsomerville@threewest.com



**BILL SOMERVILLE** // Associate | Realtor // 231.929.2955 // [bsomerville@threewest.com](mailto:bsomerville@threewest.com)



**LAND FOR SALE**  
Milbocker Rd

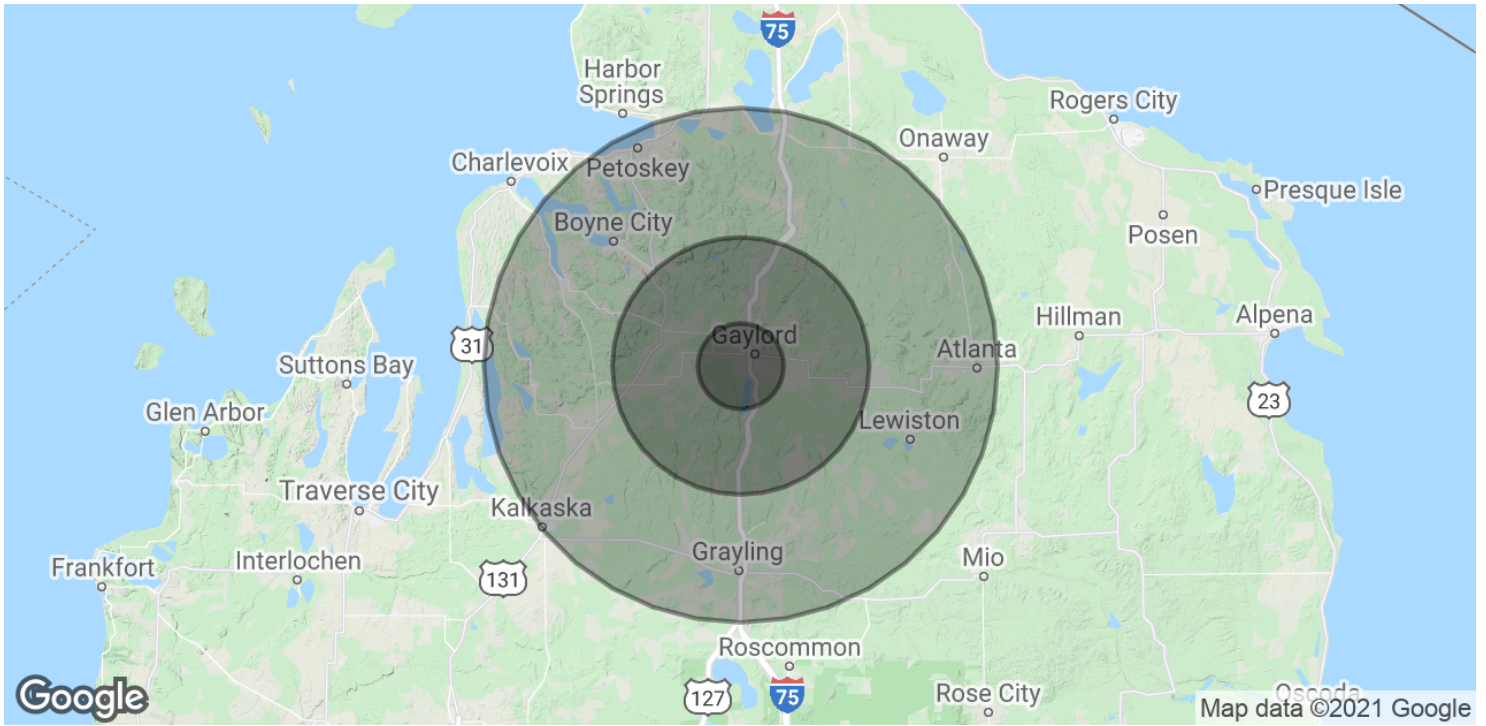


Google Map data ©2021 Imagery ©2021 CNES / Airbus, Landsat / Copernicus, Maxar Technologies, USDA Farm Service Agency

**BILL SOMERVILLE** // Associate | Realtor // 231.929.2955 // [bsomerville@threewest.com](mailto:bsomerville@threewest.com)



**BILL SOMERVILLE** // Associate | Realtor // 231.929.2955 // [bsomerville@threewest.com](mailto:bsomerville@threewest.com)



**POPULATION**

	<b>5 MILES</b>	<b>15 MILES</b>	<b>30 MILES</b>
Total Population	13,579	35,177	108,372
Average age	41.2	41.2	42.5
Average age (Male)	40.1	40.6	42.0
Average age (Female)	42.3	41.6	43.0

**HOUSEHOLDS & INCOME**

	<b>5 MILES</b>	<b>15 MILES</b>	<b>30 MILES</b>
Total households	5,638	13,956	44,193
# of persons per HH	2.4	2.5	2.5
Average HH income	\$51,835	\$55,816	\$55,915
Average house value	\$94,502	\$128,330	\$171,232

\* Demographic data derived from 2010 US Census

**BILL SOMERVILLE** // Associate | Realtor // 231.929.2955 // bsomerville@threewest.com