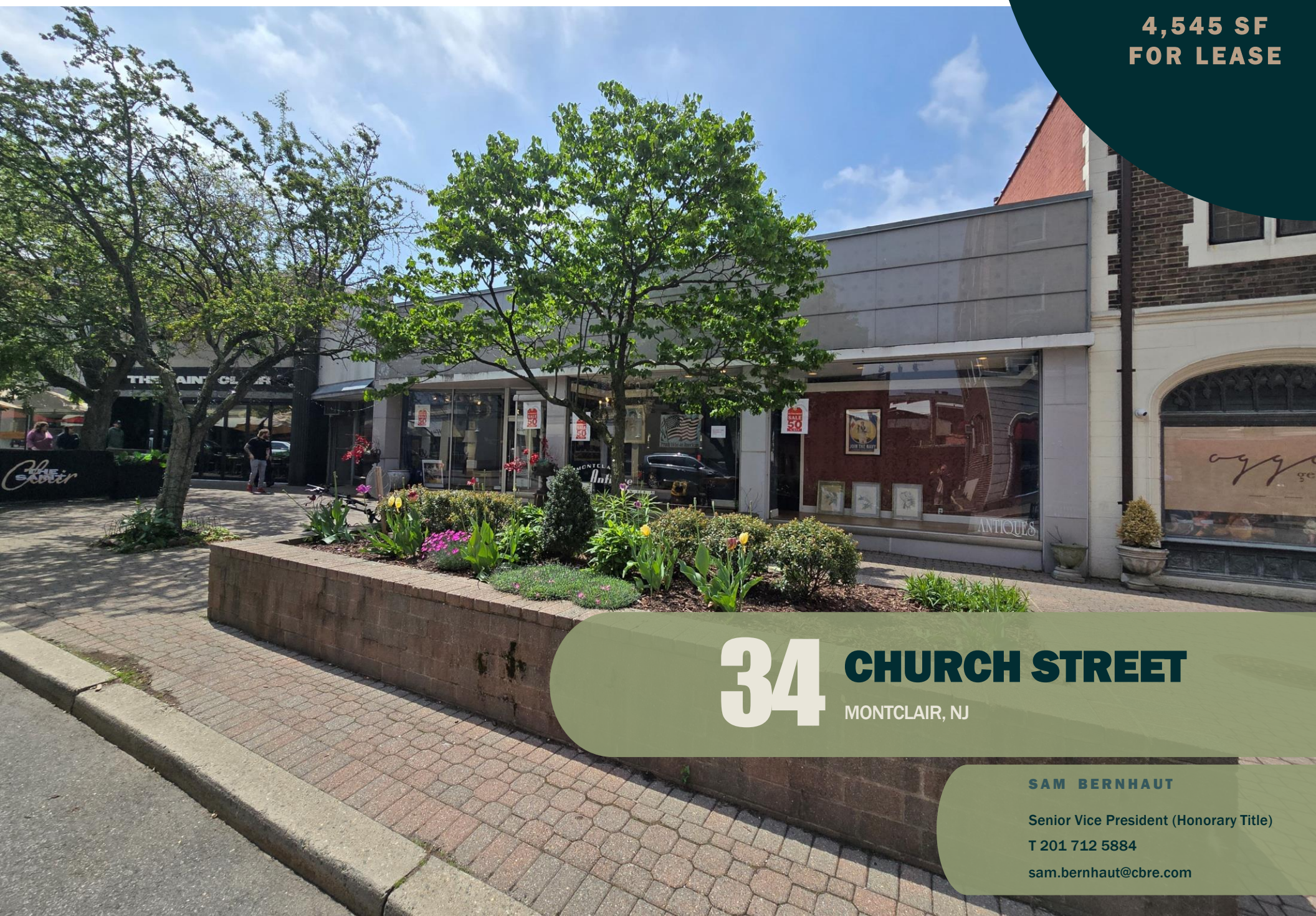


**CBRE**

**4,545 SF  
FOR LEASE**



**34 CHURCH STREET**  
MONTCLAIR, NJ

**SAM BERNHAUT**

Senior Vice President (Honorary Title)

T 201 712 5884

[sam.bernhaut@cbre.com](mailto:sam.bernhaut@cbre.com)

# PROPERTY OVERVIEW

For Lease In Prime Downtown Location

## Prime Location

Bustling Church Street adjacent to parking deck

## Dedicated Parking

With rear accessibility to the building

## Space Available

4,545 SF

## Asking Rent

Upon Request

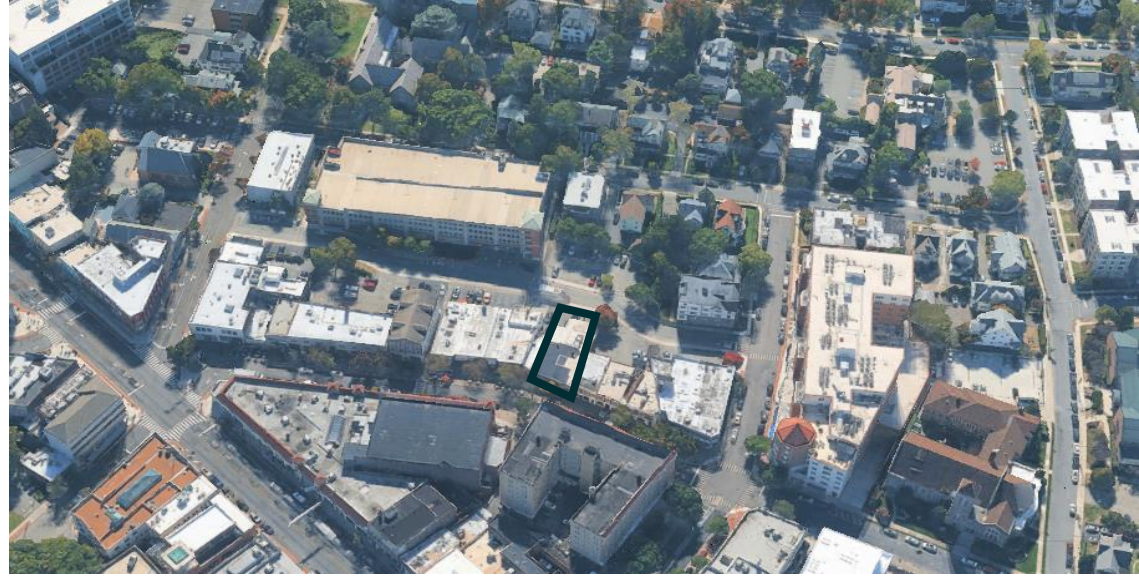
Taxes & CAM: \$11.51/PSF

## Nearby Retailers



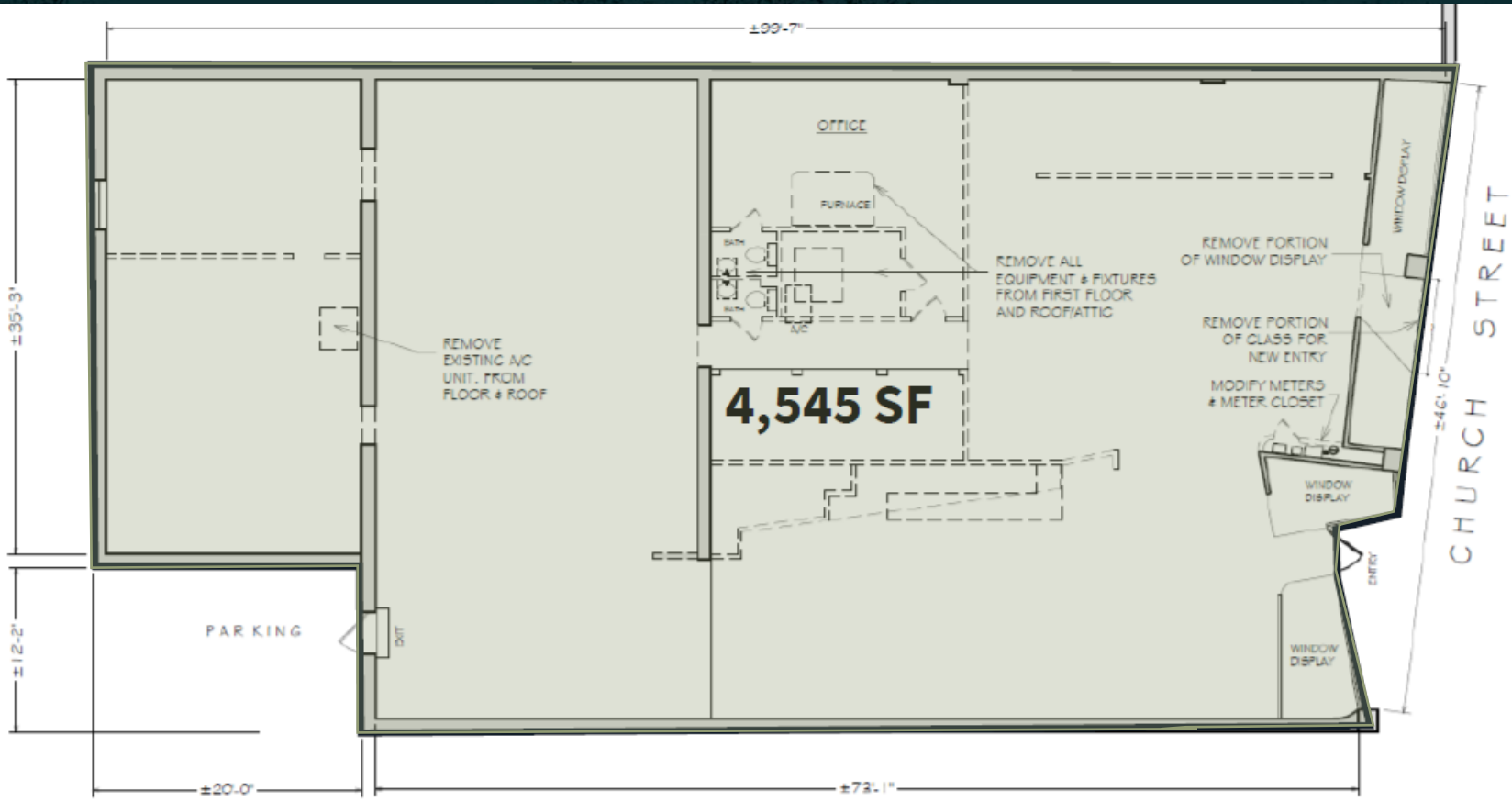
sweetgreen

ANTHROPOLOGIE





# FLOOR PLAN



**4,545 SF**

FULL SPACE