

21000-21010 TROLLEY INDUSTRIAL TAYLOR, MICHIGAN

INDUSTRIAL FOR LEASE

40,000 – 91,000 Square Feet Available



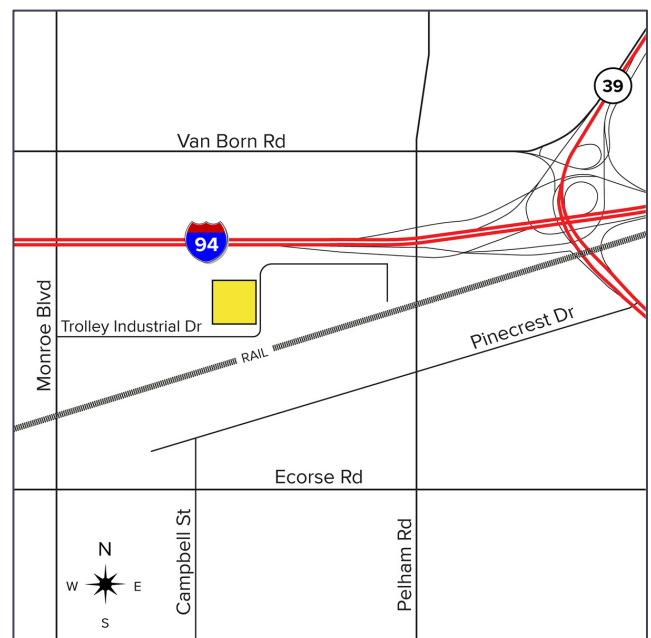
**SIGNATURE
ASSOCIATES**
KNOW SIGNATURE | KNOW RESULTS

TROLLEY INDUSTRIAL PARK



PROPERTY FEATURES

- 40,000 – 91,000 square feet available
- 211,000 square foot total building
- 28' clear height
- Multiple “dock high” truck doors
- Rare cross-dock warehouse with 2 bay repair garage capable of handling tractor and trailer
- Trailer parking for over (28) 53' semi-trailers
- Roof replaced in 2019
- Upgraded LED lighting in warehouse
- Active rail spur
- Zoned light industrial
- Close to airport and major freeways
- Located on 13.61 acres
- Lease Rate: \$5.75/sq. ft. NNN for 40,000 sq. ft.
- Lease Rate: \$6.25/sq. ft. NNN for 51,000 sq. ft.



A PROPERTY BY: **LIGHTSTONE**

For more information, please contact:

STEVE GORDON

(248) 948 0101

sgordon@signatureassociates.com

BRAD VIERGEVER

(248) 799 3146

bviergever@signatureassociates.com

SIGNATURE ASSOCIATES

One Towne Square, Suite 1200

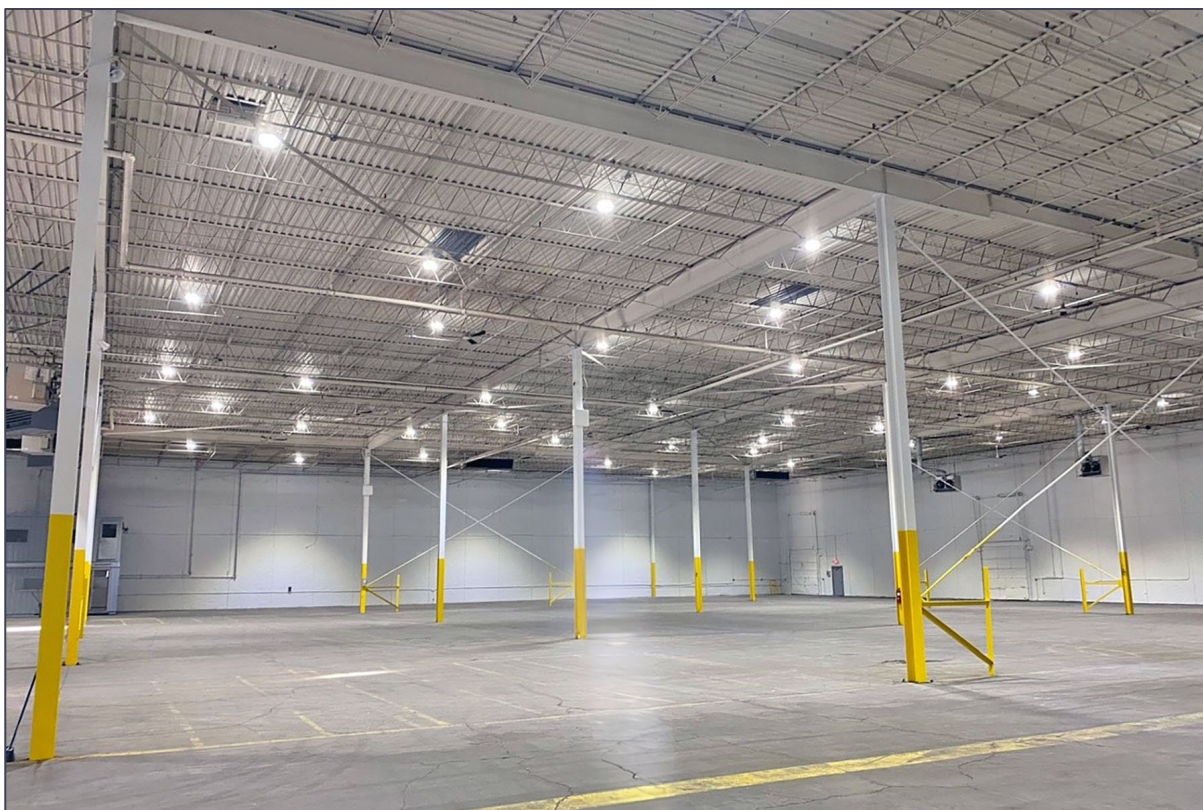
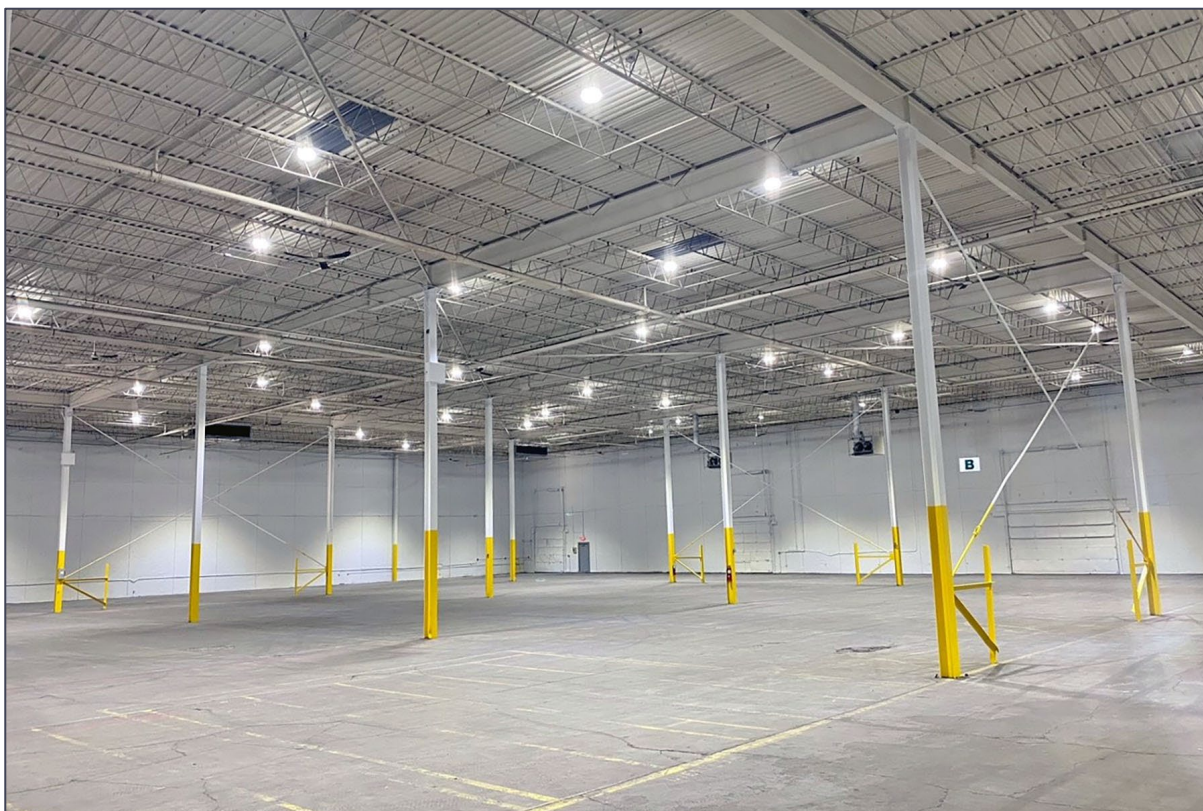
Southfield, MI 48076

www.signatureassociates.com

21000-21010 Trolley Industrial – Taylor, Michigan

Industrial For Lease

40,000 – 91,000
Square Feet
AVAILABLE



For more information, please contact:

STEVE GORDON

(248) 948 0101

sgordon@signatureassociates.com

BRAD VIERGEVER

(248) 799 3146

bviergever@signatureassociates.com

SIGNATURE ASSOCIATES

One Towne Square, Suite 1200

Southfield, MI 48076

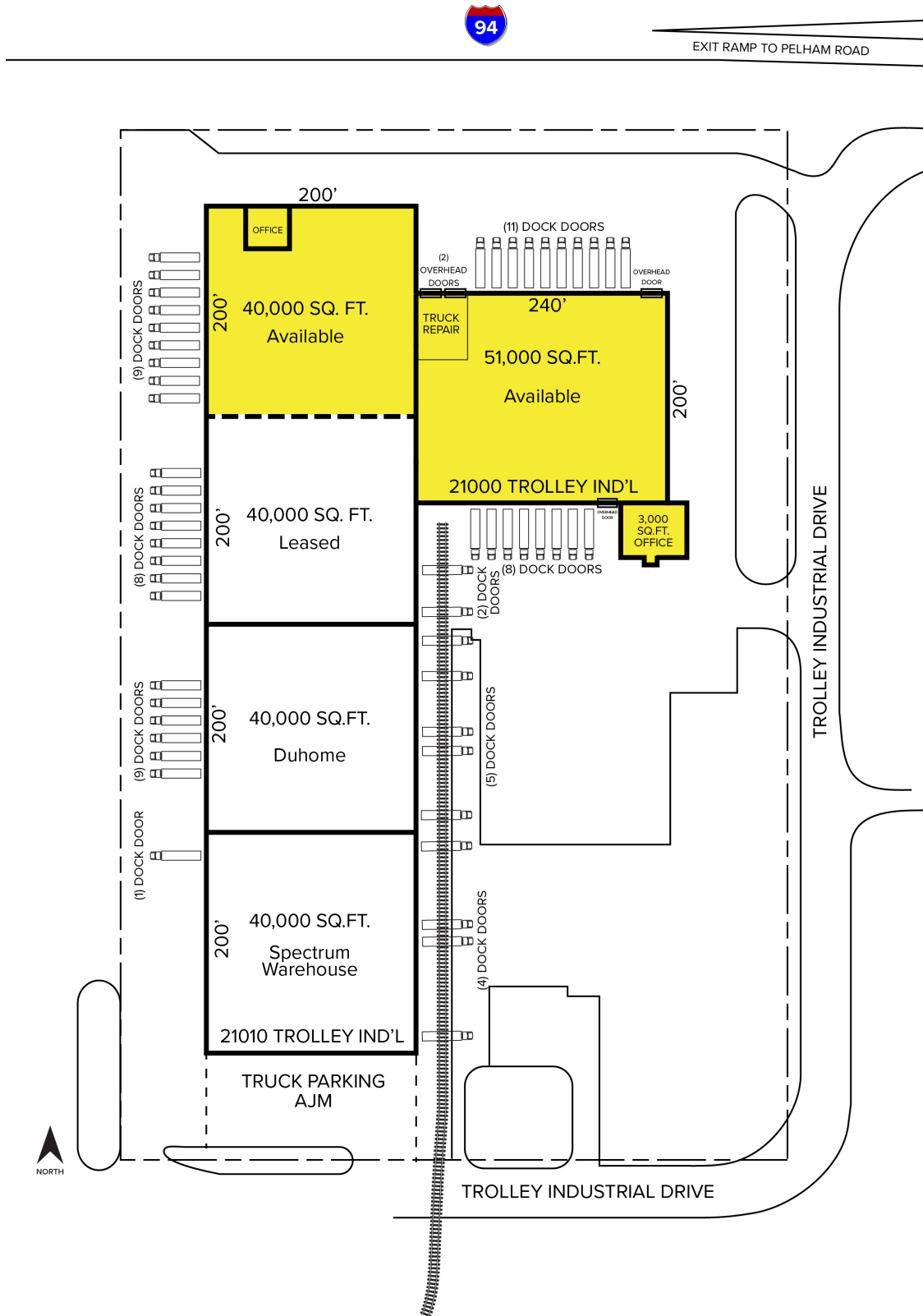
www.signatureassociates.com

21000-21010 Trolley Industrial – Taylor, Michigan

Industrial For Lease

40,000 – 91,000
Square Feet
AVAILABLE

Site Plan



For more information, please contact:

STEVE GORDON

(248) 948 0101

sgordon@signatureassociates.com

BRAD VIERGEVER

(248) 799 3146

bviergever@signatureassociates.com

SIGNATURE ASSOCIATES

One Towne Square, Suite 1200

Southfield, MI 48076

www.signatureassociates.com

21000-21010 Trolley Industrial – Taylor, Michigan

Industrial For Lease

40,000 – 91,000
Square Feet
AVAILABLE

Aerial



For more information, please contact:

STEVE GORDON
(248) 948 0101
sgordon@signatureassociates.com

BRAD VIERGEVER
(248) 799 3146
bviergever@signatureassociates.com

SIGNATURE ASSOCIATES
One Towne Square, Suite 1200
Southfield, MI 48076
www.signatureassociates.com

Information is subject to verification and no liability for errors or omissions is assumed. Price is subject to change and listing withdrawal.