



INDUSTRIAL PROPERTY FOR SALE

INVESTMENT OPPORTUNITY

64 AVENUE OF INDUSTRY | WATERBURY, CT 06705

CHRISTOPHER DUCLOS
860.922.6481
chrisduclos@sentrycommercial.com

STEPHANIE ROMANO SHAW, CCIM
860.810.4392
romano@sentrycommercial.com



SENTRY COMMERCIAL BROKER ADVISORY LLC | 860.922.6481 | WWW.SENTRYCOMMERCIAL.COM

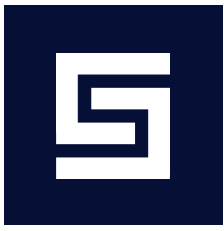


TABLE OF CONTENTS

64 AVENUE OF INDUSTRY | WATERBURY, CT 06705

PROPERTY INFORMATION	3
LOCATION INFORMATION	7
FINANCIAL ANALYSIS	12
DEMOGRAPHICS	15
ADVISOR BIOS	17

All materials and information received or derived from Sentry Commercial Broker Advisory LLC its directors, officers, agents, advisors, affiliates and/or any third party sources are provided without representation or warranty as to completeness, veracity, or accuracy, condition of the property, compliance or lack of compliance with applicable governmental requirements, developability or suitability, financial performance of the property, projected financial performance of the property for any party's intended use or any and all other matters.

Neither Sentry Commercial Broker Advisory LLC its directors, officers, agents, advisors, or affiliates makes any representation or warranty, express or implied, as to accuracy or completeness of the any materials or information provided, derived, or received. Materials and information from any source, whether written or verbal, that may be furnished for review are not a substitute for a party's active conduct of its own due diligence to determine these and other matters of significance to such party. Sentry Commercial Broker Advisory LLC will not investigate or verify any such matters or conduct due diligence for a party unless otherwise agreed in writing.

EACH PARTY SHALL CONDUCT ITS OWN INDEPENDENT INVESTIGATION AND DUE DILIGENCE.

Any party contemplating or under contract or in escrow for a transaction is urged to verify all information and to conduct their own inspections and investigations including through appropriate third party independent professionals selected by such party. All financial data should be verified by the party including by obtaining and reading applicable documents and reports and consulting appropriate independent professionals. Sentry Commercial Broker Advisory LLC makes no warranties and/or representations regarding the veracity, completeness, or relevance of any financial data or assumptions. Sentry Commercial Broker Advisory LLC does not serve as a financial advisor to any party regarding any proposed transaction. All data and assumptions regarding financial performance, including that used for financial modeling purposes, may differ from actual data or performance. Any estimates of market rents and/or projected rents that may be provided to a party do not necessarily mean that rents can be established at or increased to that level. Parties must evaluate any applicable contractual and governmental limitations as well as market conditions, vacancy factors and other issues in order to determine rents from or for the property.

Legal questions should be discussed by the party with an attorney. Tax questions should be discussed by the party with a certified public accountant or tax attorney. Title questions should be discussed by the party with a title officer or attorney. Questions regarding the condition of the property and whether the property complies with applicable governmental requirements should be discussed by the party with appropriate engineers, architects, contractors, other consultants and governmental agencies. All properties and services are marketed by Sentry Commercial Broker Advisory LLC in compliance with all applicable fair housing and equal opportunity laws.



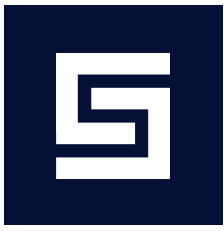
PROPERTY INFORMATION

SECTION 1

CHRISTOPHER DUCLOS
860.922.6481
chrisduclos@sentrycommercial.com

STEPHANIE ROMANO SHAW, CCIM
860.810.4392
romano@sentrycommercial.com





EXECUTIVE SUMMARY

64 AVENUE OF INDUSTRY | WATERBURY, CT 06705



OFFERING SUMMARY

Sale Price:	\$8,995,000
Building Size:	78,000 SF
Lot Size:	10.34 Acres
Number of Units:	2
NOI:	\$539,000
Year Built:	1966
Renovated:	2015
Zoning:	IP

PROPERTY OVERVIEW

Sentry Commercial is pleased to present 64 Avenue of Industry, Waterbury CT for sale. This 78,000 industrial property is fully occupied by long-term, reliable tenants, offering a stable and lucrative investment. Strategically located and meticulously maintained, this property provides a secure and hassle-free income stream for investors. The projected 2025 Net Operating Income (NOI) for the property is estimated at \$539,000.

PROPERTY HIGHLIGHTS

- Fully occupied with long term leases
- Projected 2025 estimated at \$539,000
- Zoned IP for versatile use
- Prime location in industrial area
- Easy access to major highways



BUILDING DETAILS

64 AVENUE OF INDUSTRY | WATERBURY, CT 06705



\$8,995,000

BUILDING SPECIFICATIONS

Building Size	78,000 SF
Office Space	20,000 SF
Warehouse	58,876 SF
Ceiling Height	21'
Docks	3
Drives	1
Column Spacing	30' x 30'
Year Built	1966
Year Last Renovated	2015

MECHANICAL/UTILITIES

Power	2,500 amp, 480/277 volt, 3 phase
Heat	Gas
Air Conditioning	100%
Lighting	LED
Water/Sewer Company	City of Waterbury
Electric Company	Eversource

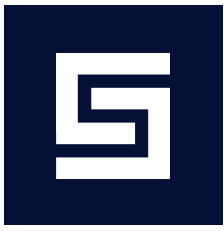
LAND

Lot Size	10.34 Acres
Rail	N/A
Zoning	IP

TAXES

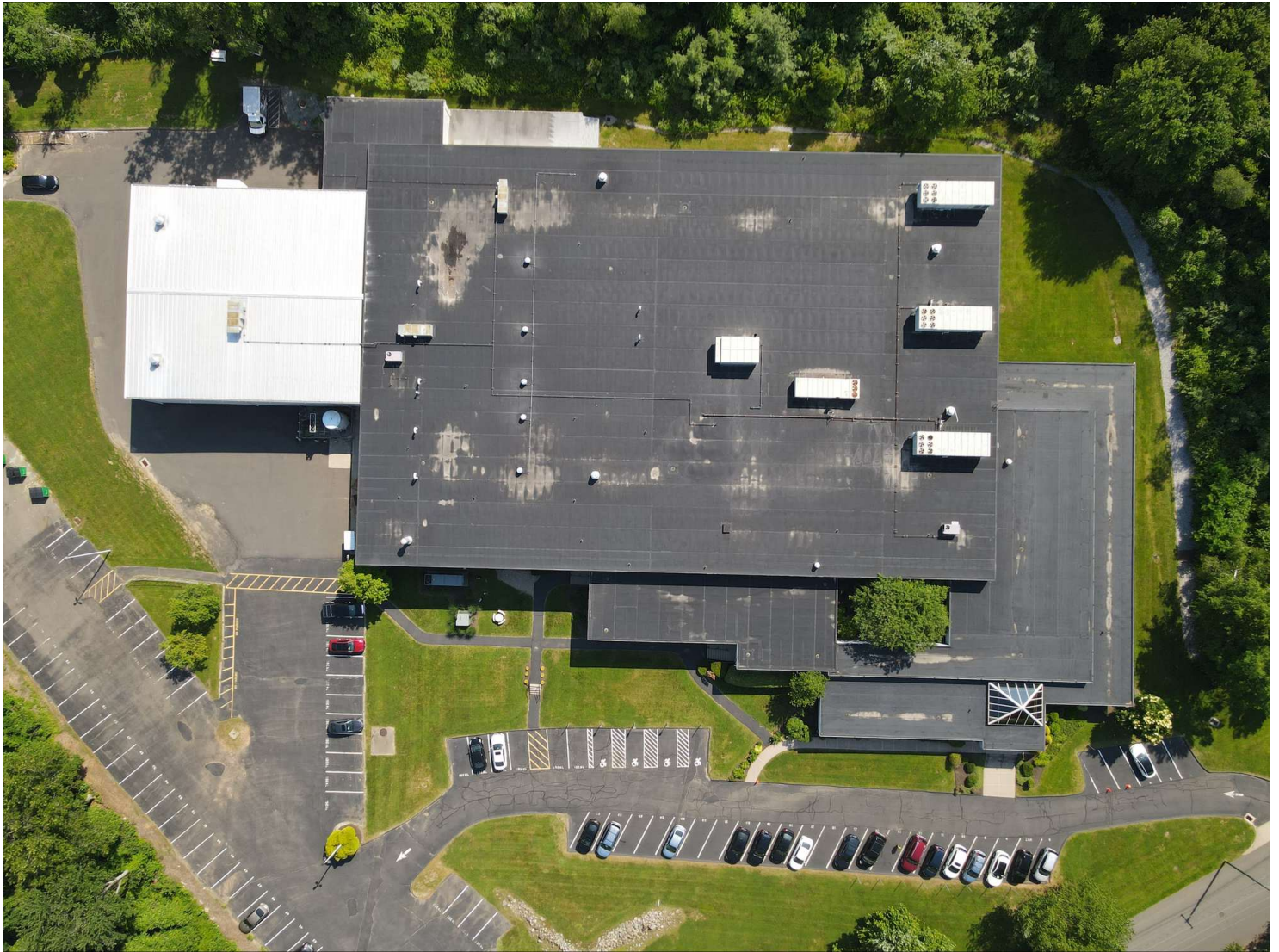
Tax PSF	\$1.20 SF
Taxes	\$93,888.30
Assessed Value	\$1,899,035.00
Year Assessed	2023
Mill Rate	49.44





AERIAL PHOTO

64 AVENUE OF INDUSTRY | WATERBURY, CT 06705





LOCATION INFORMATION

SECTION 2

CHRISTOPHER DUCLOS

860.922.6481

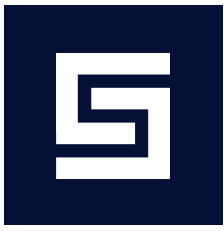
chrisduclos@sentrycommercial.com

STEPHANIE ROMANO SHAW, CCIM

860.810.4392

romano@sentrycommercial.com

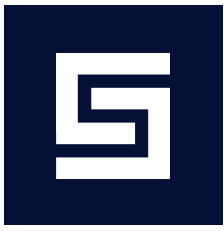




REGIONAL MAP

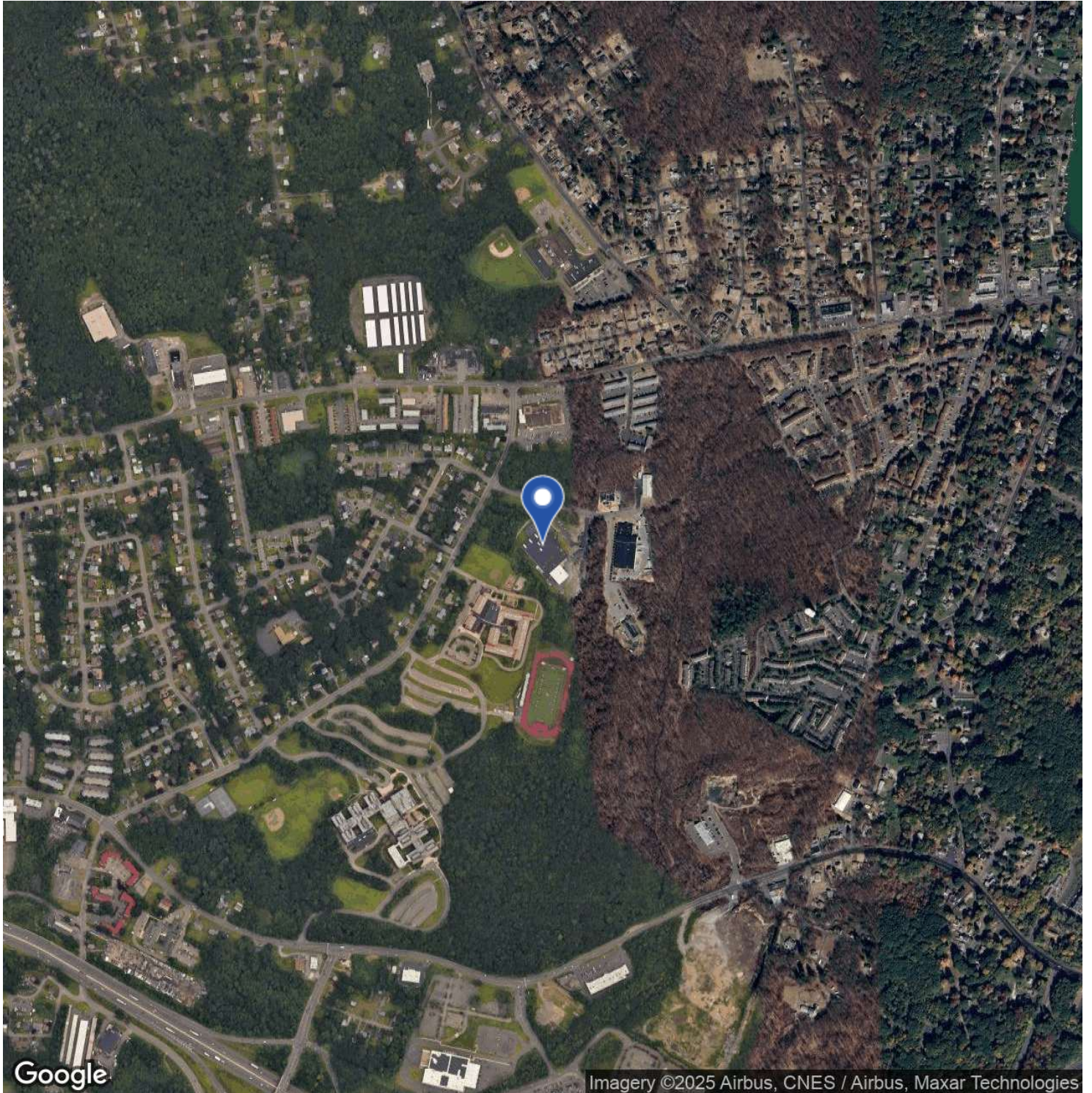
64 AVENUE OF INDUSTRY | WATERBURY, CT 06705





AERIAL MAP

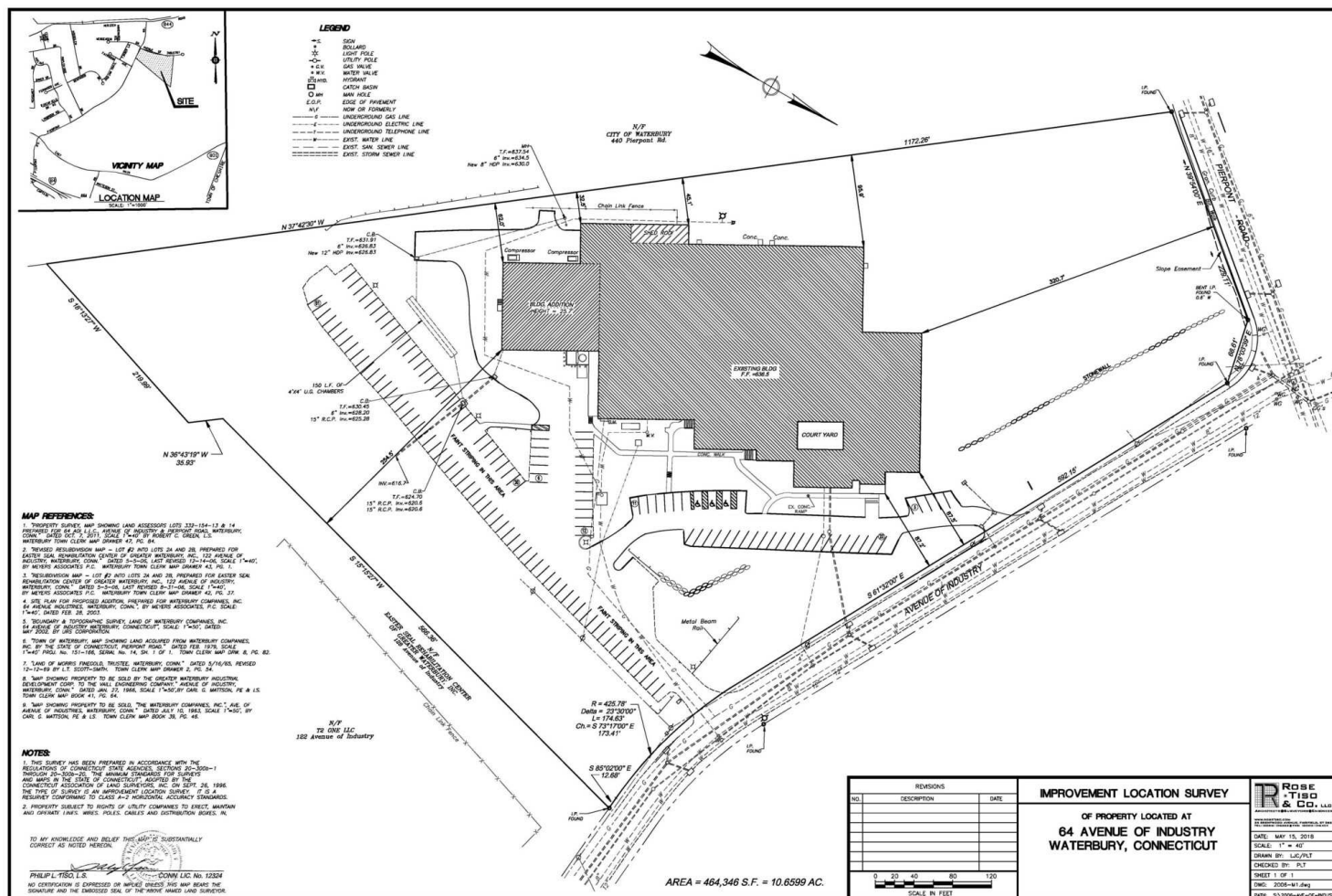
64 AVENUE OF INDUSTRY | WATERBURY, CT 06705





SITE PLAN

64 AVENUE OF INDUSTRY | WATERBURY, CT 06705





FINANCIAL ANALYSIS

SECTION 3

CHRISTOPHER DUCLOS

860.922.6481

chrisduclos@sentrycommercial.com

STEPHANIE ROMANO SHAW, CCIM

860.810.4392

romano@sentrycommercial.com

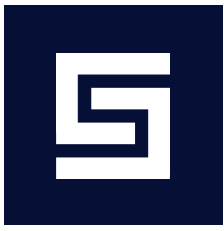




RENT ROLL

64 AVENUE OF INDUSTRY | WATERBURY, CT 06705

SUITE	TENANT NAME	SIZE SF	% OF BUILDING	ANNUAL RENT	LEASE START	LEASE END
1	KT Corp	63,876 SF	81.89%	\$424,775	4/1/2025	3/31/2032
2	DCF	12,092 SF	15.50%	\$190,449	5/16/2022	5/15/2032
TOTALS		75,968 SF	97.39%	\$615,224		



TENANT PROFILES

64 AVENUE OF INDUSTRY | WATERBURY, CT 06705



TENANT OVERVIEW

Company:	KT Corporation/Fusion Filtration
Founded:	1976
Locations:	2
Headquarters:	Waterbury, CT
Website:	www.fusionfiltration.com



TENANT OVERVIEW

Company:	CT Department of Children & Families
Founded:	1993
Locations:	6
Headquarters:	Hartford, CT
Website:	ct.gov



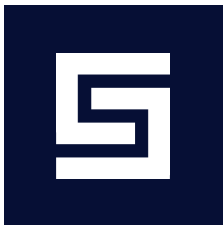
DEMOGRAPHICS

SECTION 4

CHRISTOPHER DUCLOS
860.922.6481
chrisduclos@sentrycommercial.com

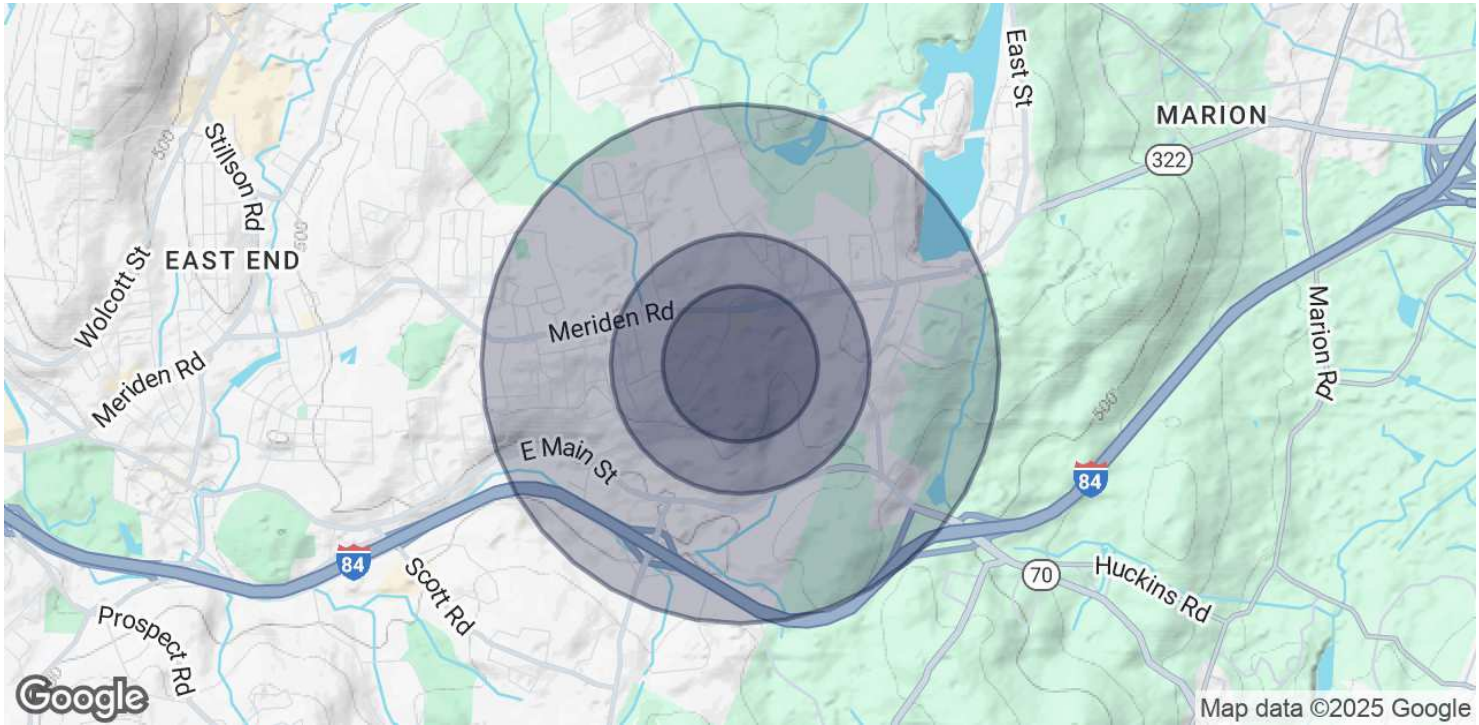
STEPHANIE ROMANO SHAW, CCIM
860.810.4392
romano@sentrycommercial.com





DEMOGRAPHICS MAP & REPORT

64 AVENUE OF INDUSTRY | WATERBURY, CT 06705



POPULATION	0.3 MILES	0.5 MILES	1 MILE
Total Population	884	3,319	8,039
Average Age	42	40	41
Average Age (Male)	40	38	40
Average Age (Female)	44	42	43

HOUSEHOLDS & INCOME	0.3 MILES	0.5 MILES	1 MILE
Total Households	371	1,389	3,271
# of Persons per HH	2.4	2.4	2.5
Average HH Income	\$107,295	\$101,042	\$110,373
Average House Value	\$243,181	\$239,273	\$263,062

Demographics data derived from AlphaMap



ADVISOR BIOS

SECTION 5

CHRISTOPHER DUCLOS

860.922.6481

chrisduclos@sentrycommercial.com

STEPHANIE ROMANO SHAW, CCIM

860.810.4392

romano@sentrycommercial.com





MEET THE TEAM

64 AVENUE OF INDUSTRY | WATERBURY, CT 06705



CHRISTOPHER DUCLOS

Industrial Specialist

Cell: 860.922.6481

chrisduclos@sentrycommercial.com



STEPHANIE ROMANO SHAW, CCIM

Industrial Specialist

Cell: 860.810.4392

romano@sentrycommercial.com