

6900 WHITNEYVILLE AVE SE  
ALTO, MICHIGAN

VACANT LAND FOR SALE OR LEASE  
0.96 Acres Available



**SIGNATURE ASSOCIATES**  
KNOW SIGNATURE | KNOW RESULTS

**DEVELOPMENT**

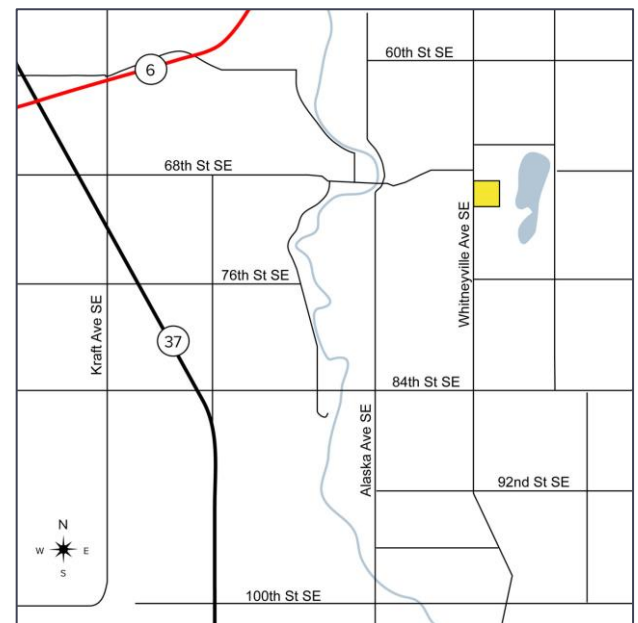


## PROPERTY FEATURES

- 0.96 acres available
- Corner lot
- Zoned C-1
- City sanitary sewer with well water
- South of new Dollar General (2020)
- Sale Price: \$499,000 (\$519,792/ac)
- Lase Rate: \$8,000/mo

## DEMOGRAPHICS

	POPULATION	MED. HH INCOME
1 MILE	1,573	\$77,482
3 MILE	9,620	\$105,763
5 MILE	24,432	\$101,794



For more information, please contact:

**JOE RIZQALLAH**

(616) 822 6310

jrizzqallah@signatureassociates.com

**SIGNATURE ASSOCIATES**

1188 East Paris Ave SE, Suite 220

Grand Rapids, MI 49546

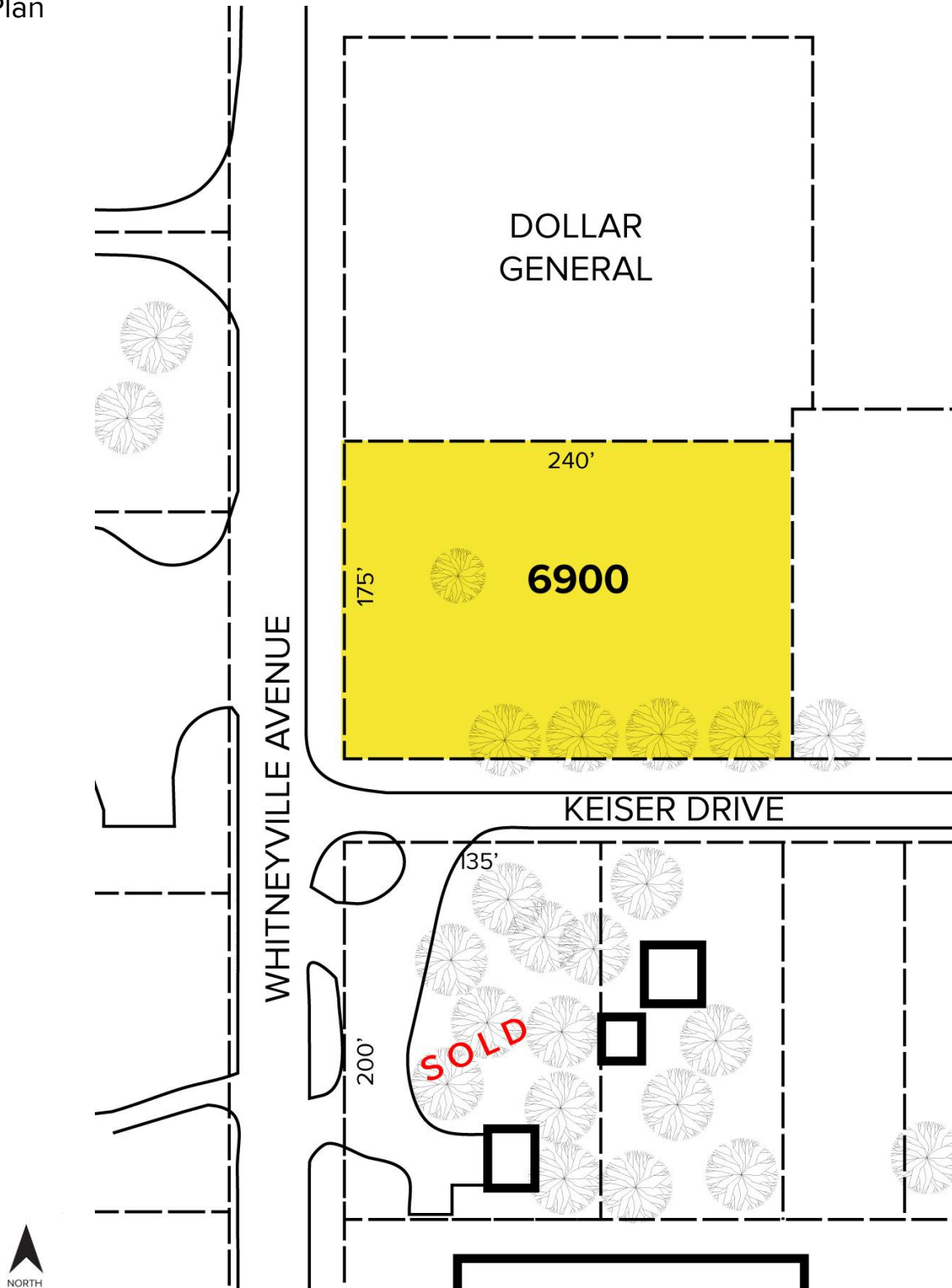
www.signatureassociateswm.com

# 6900 Whitneyville Avenue – Alto, Michigan

Vacant Land For Sale

0.96  
Acres  
AVAILABLE

## Site Plan



For more information, please contact:

**JOE RIZQALLAH**

(616) 822 6310

[jrizqallah@signatureassociates.com](mailto:jrizqallah@signatureassociates.com)

**SIGNATURE ASSOCIATES**

1188 East Paris Ave SE, Suite 220

Grand Rapids, MI 49546

[www.signatureassociateswm.com](http://www.signatureassociateswm.com)

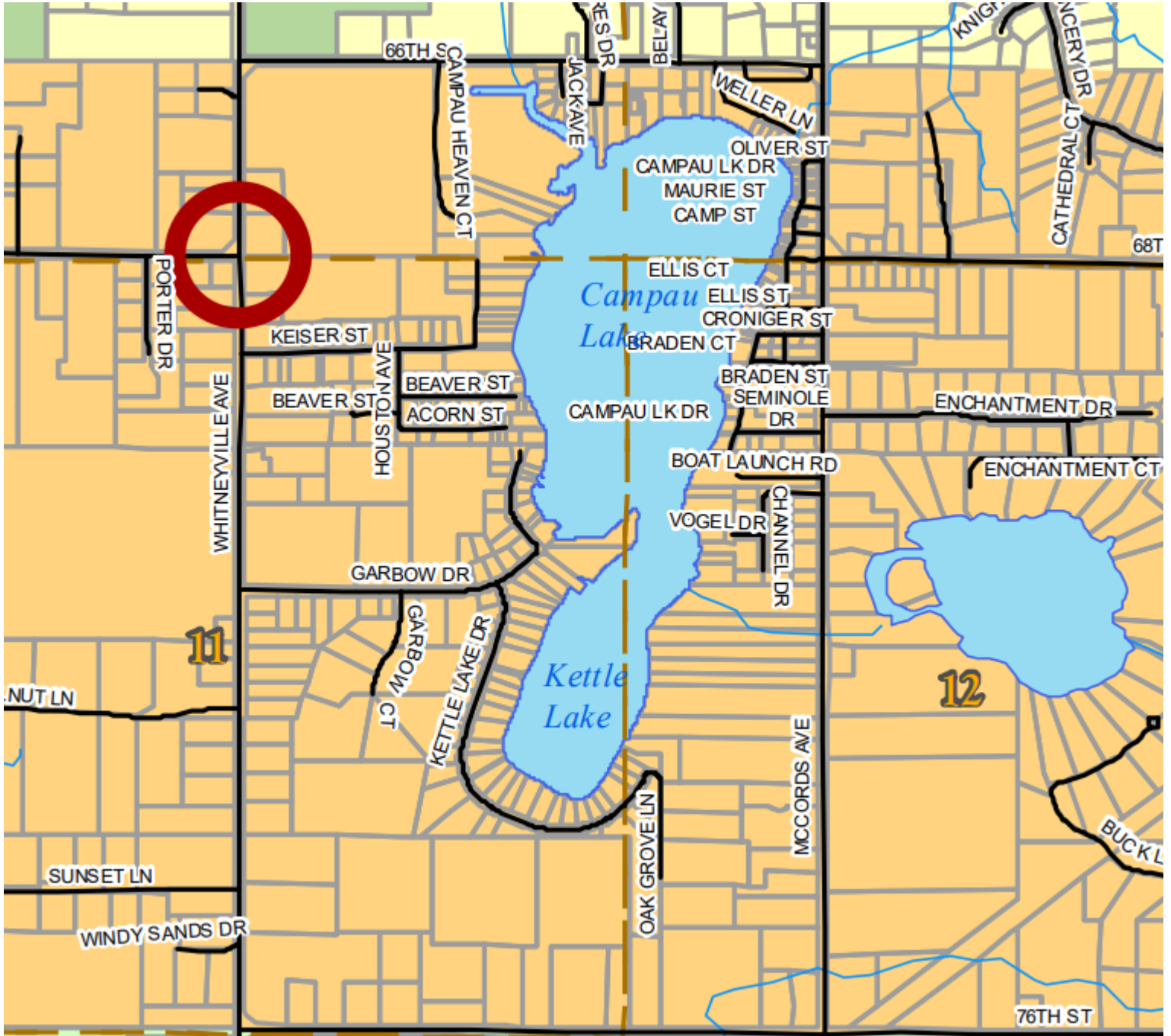
Information is subject to verification and no liability for errors or omissions is assumed. Price is subject to change and listing withdrawal.

# 6900 Whitneyville Avenue – Alto, Michigan



Vacant Land For Sale

0.96  
Acres  
AVAILABLE

## Caledonia Township | Future Land Use



### Legend

-  Neighborhood Commercial
-  Community Residential

For more information, please contact:

**JOE RIZQALLAH**  
(616) 822 6310  
jrizzqallah@signatureassociates.com

**SIGNATURE ASSOCIATES**  
1188 East Paris Ave SE, Suite 220  
Grand Rapids, MI 49546  
www.signatureassociateswm.com