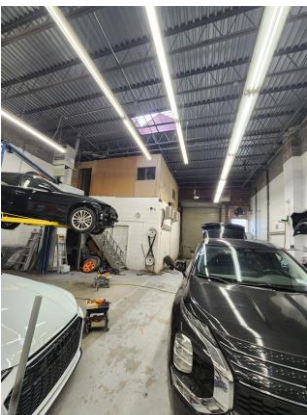
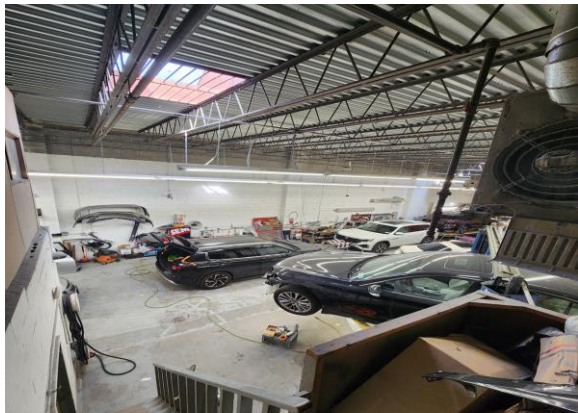
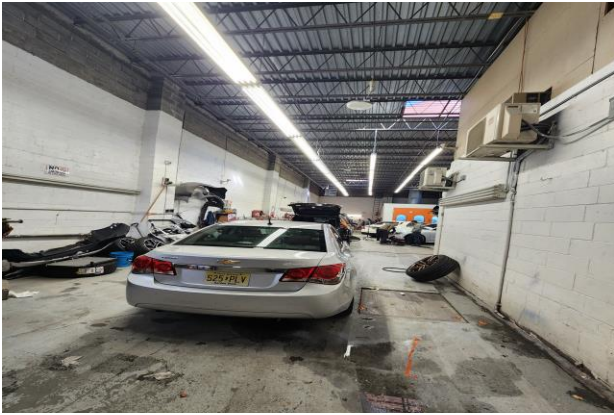
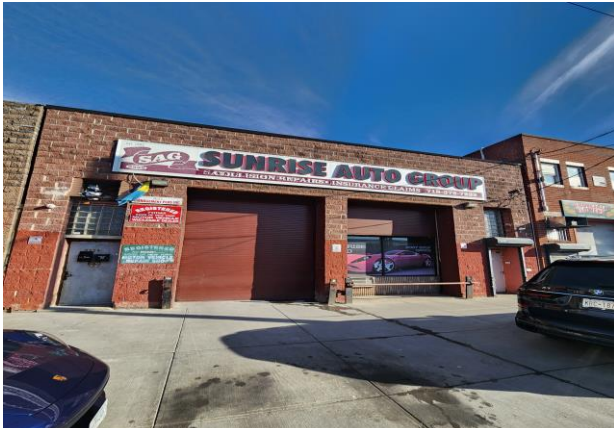


Brooklyn / Gravesend – Coney Island Border
Modern 4,000 SF Industrial Warehouse Building For Sale
Operating as Auto Body / Auto Repair for Past 30 Years
Great Opportunity For User and Investor

2559 Stillwell Avenue, Brooklyn NY 11223
Block 7205 - Lot 53



Features:

- 1 Story Building
- 4,000 SF
- Dimensions: 40' x 100'
- 40 feet Frontage on Stillwell Avenue
- 22' Ceilings
- 2 Drive-In Doors
- Zoning M1-1
- Built In 1994
- Ample Power
- Gas Heat
- Office
- 2 Bathrooms
- Concrete / Brick / Steel Construction
- Operating as Auto Body / Auto Repair Shop for 30 years
- Paint Spray Booth
- All Licenses and C of O in Place for Automotive Uses
- All Equipment and Licenses Can Stay if Buyer Requests
- Located in High Density Commercial & Residential Area
- Close to Public Transportation
- Off Belt Parkway Exit 6

Ideal For:

Any Automotive Uses
Warehouse – Distribution
Fabrication – Assembly – Manufacturing
Retail - Wholesale

For More Info, Price and Inspection
Contact Exclusive Broker Gary Mayzlin
Cell 718 -809-6106 / Office 718-517-9758
Email: garymayzlin@gmail.com
Real Estate Trade Co, Inc.
44 Court Street, Suite 1217, Brooklyn NY
Industrial - Commercial