

FOR LEASE

Baltimore County, MD

EXECUTIVE BUILDING

22 WEST ROAD | TOWSON, MARYLAND 21204

AVAILABLE

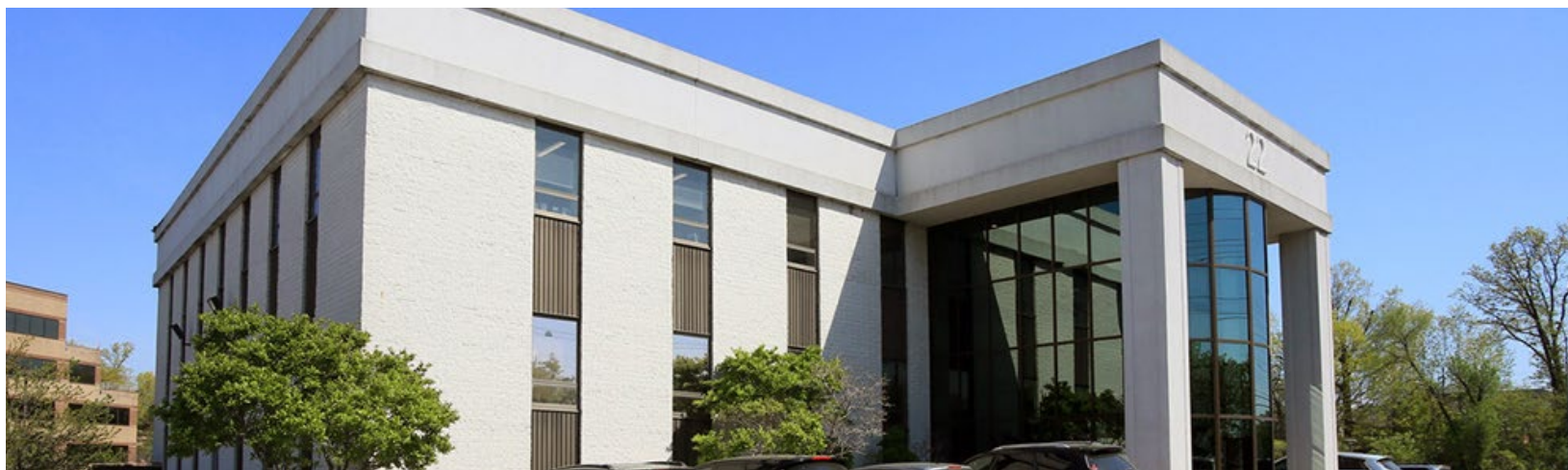
Suite 300: 3,064 sf

RENTAL RATE

Suite 300: \$20.50/sf, Modified Gross

HIGHLIGHTS

- ▶ Built-out medical space available
- ▶ Convenient location to I-695 and York Road
- ▶ Recently updated interior common areas
- ▶ Monument signage available
- ▶ Walking distance to the Shops at Kenilworth
- ▶ Free surface parking
- ▶ On-site ownership
- ▶ Tenant Improvement Allowance available



Joe Bradley

☎ 410.494.4892

✉ jbradley@mackenziecommercial.com

Henson Ford

☎ 410.494.6658

✉ hford@mackenziecommercial.com

Bill Whitty

☎ 410.494.4862

✉ bwhitty@mackenziecommercial.com

Matt Mueller

☎ 410.494.6658

✉ mmueller@mackenziecommercial.com

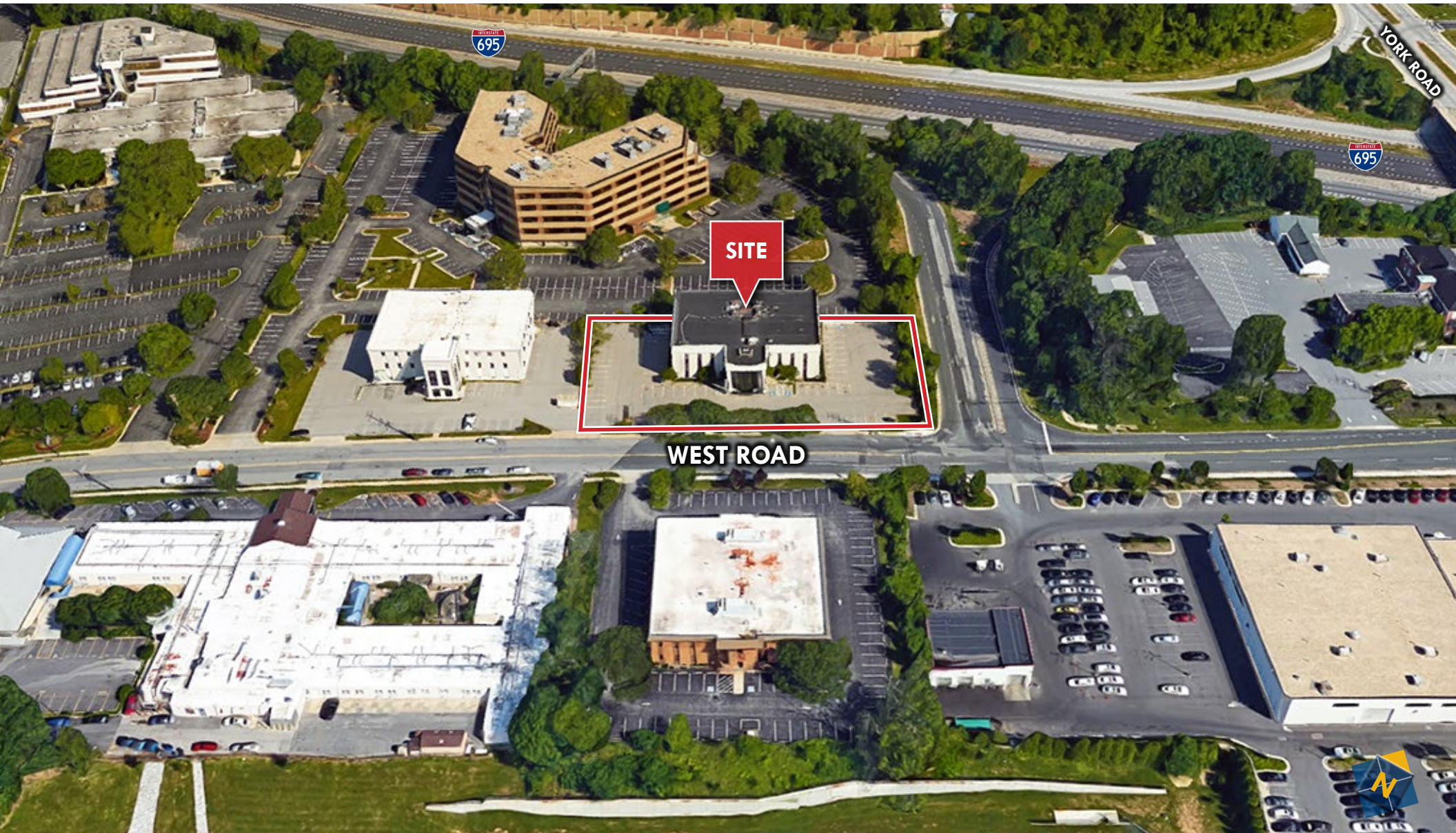
MacKenzie Commercial Real Estate Services, LLC • 410-821-8585 • 2328 W. Joppa Road, Suite 200 | Lutherville-Timonium, Maryland 21093 • www.MACKENZIECOMMERCIAL.com

FOR LEASE

Baltimore County, MD

BIRDSEYE

EXECUTIVE BUILDING | 22 WEST ROAD | TOWSON, MARYLAND 21204



 **MACKENZIE**
COMMERCIAL REAL ESTATE SERVICES, LLC

Joe Bradley

410.494.4892

jbradley@mackenziecommercial.com

Henson Ford

410.494.6658

hford@mackenziecommercial.com

Bill Whitty

410.494.4862

bwhitty@mackenziecommercial.com

Matt Mueller

410.494.6658

mmueller@mackenziecommercial.com

Mackenzie Commercial Real Estate Services, LLC • 410-821-8585 • 2328 W. Joppa Road, Suite 200 | Lutherville-Timonium, Maryland 21093 • www.MACKENZIECOMMERCIAL.com

FOR LEASE

Baltimore County, MD

BIRDSEYE

EXECUTIVE BUILDING | 22 WEST ROAD | TOWSON, MARYLAND 21204

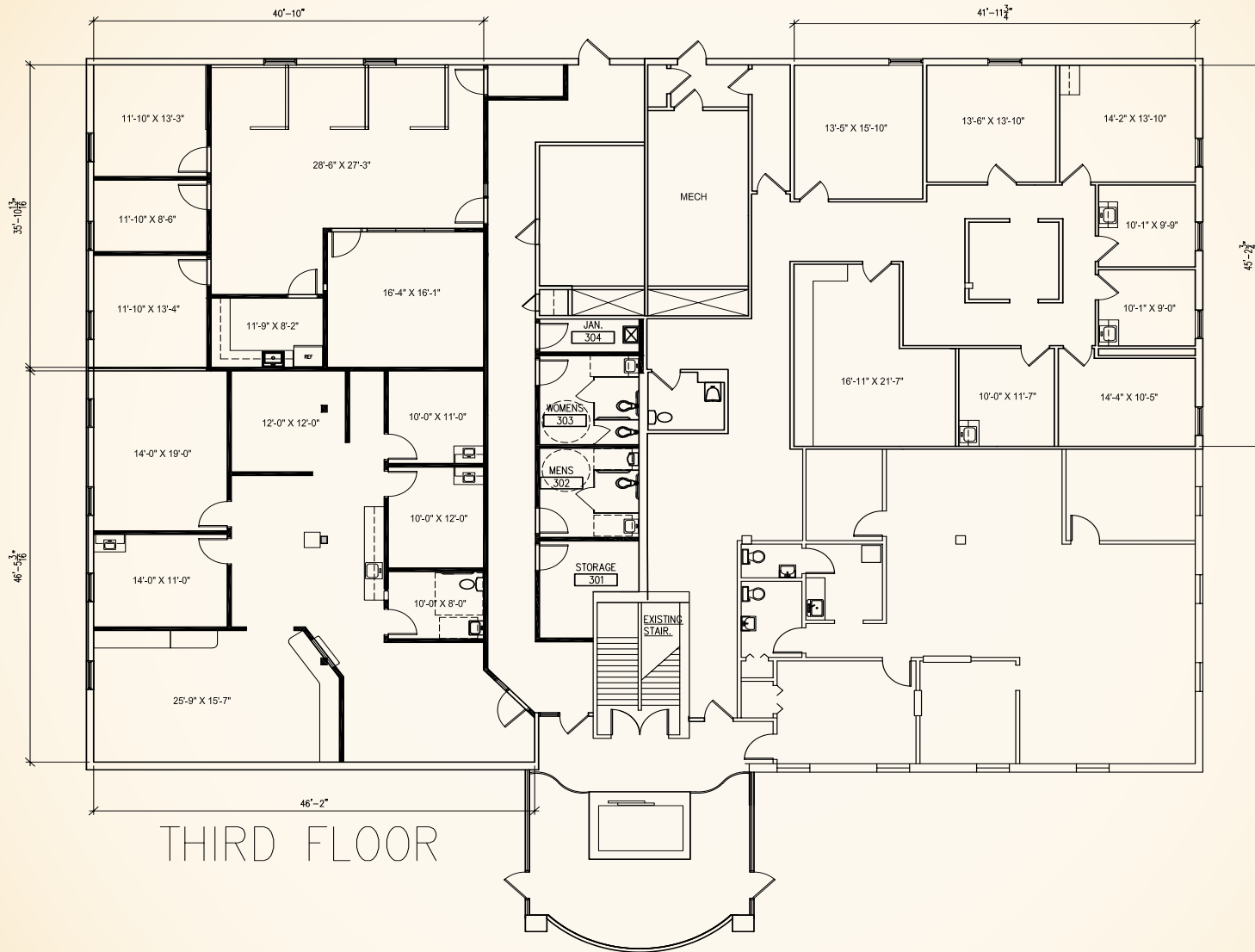


FOR LEASE

Baltimore County, MD

SUITE 300: 3,064 SF

EXECUTIVE BUILDING | 22 WEST ROAD | TOWSON, MARYLAND 21204



THIRD FLOOR