

① SITE PLAN
1" = 50'-0"



FOR CONSTRUCTION
THE INFORMATION CONTAINED HEREIN IS PRELIMINARY. THIS DOCUMENT MAY NOT BE USED OR REPRODUCED WITHOUT THE WRITTEN CONSENT OF JACKOLA ENGINEER & ARCHITECT, P.C.

AIRPORT ROAD LLC- PARKLAND MEADOWS APTS - LOT 7, BLDGS A/B
AIRPORT ROAD
KALISPELL, MT

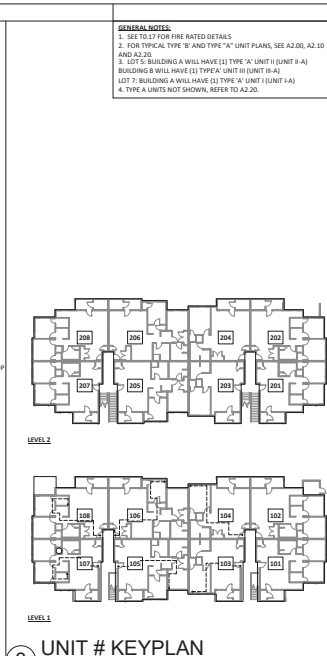
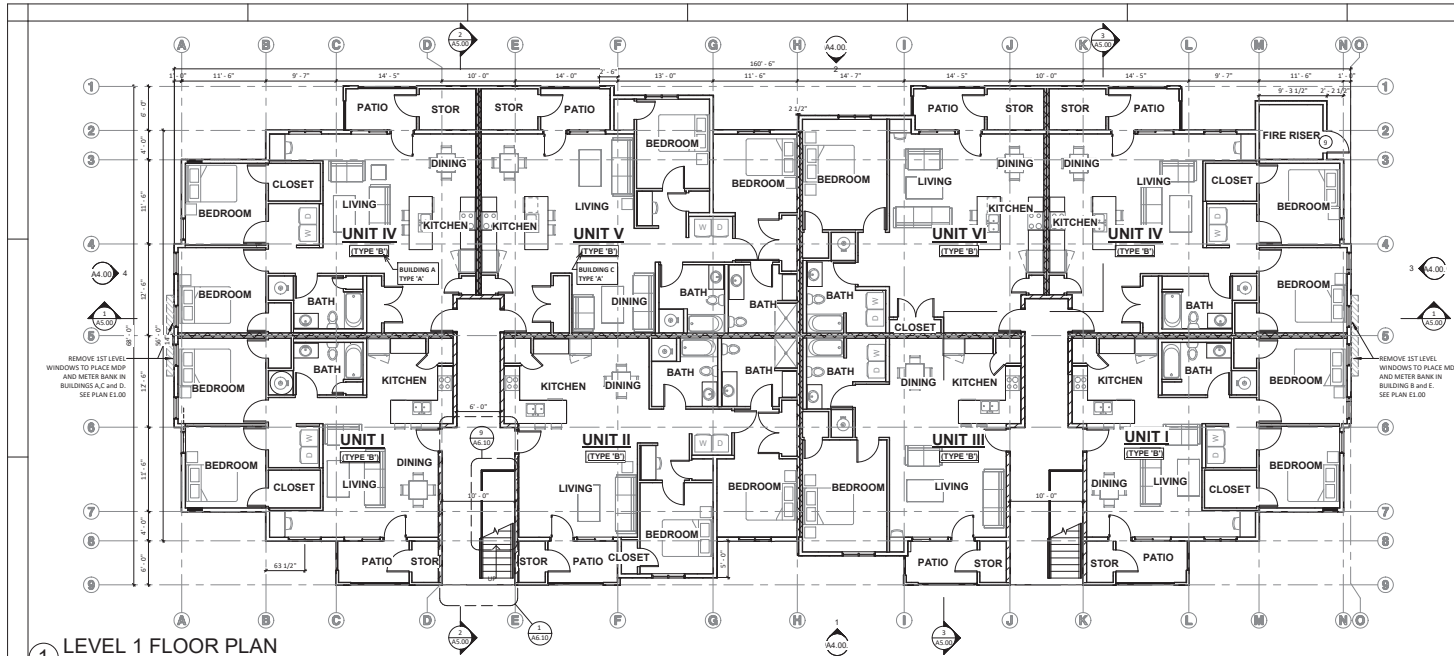
DRAWN: CSI CHECKED: NNH

DATE: 05/19/2023

REVISIONS:

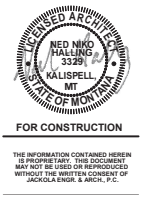
CODE SITE PLAN

T0.02



GENERAL NOTES:

- SEE E1.17 FOR FIRE RATED DETAILS.
- FOR TYPICAL TYPE 'B' AND TYPE 'A' UNIT PLANS, SEE A2.00, A2.10 AND A2.20.
- LOT 5: BUILDING A WILL HAVE (1) TYPE 'A' UNIT (UNIT B-A) BUILDING B WILL HAVE (1) TYPE 'A' UNIT (UNIT B-A).
- LOT 7: BUILDING A WILL HAVE (1) TYPE 'A' UNIT (UNIT 1A) 4. TYPE A UNITS NOT SHOWN. REFER TO A2.30.



AIRPORT ROAD LLC- PARKLAND MEADOWS APTS - LOT 7, BLDGS A/B

AIRPORT ROAD
KALISPELL, MT

DRAWN: CSI CHECKED: NNH

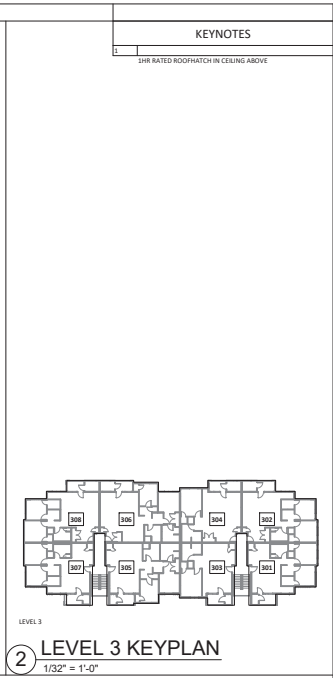
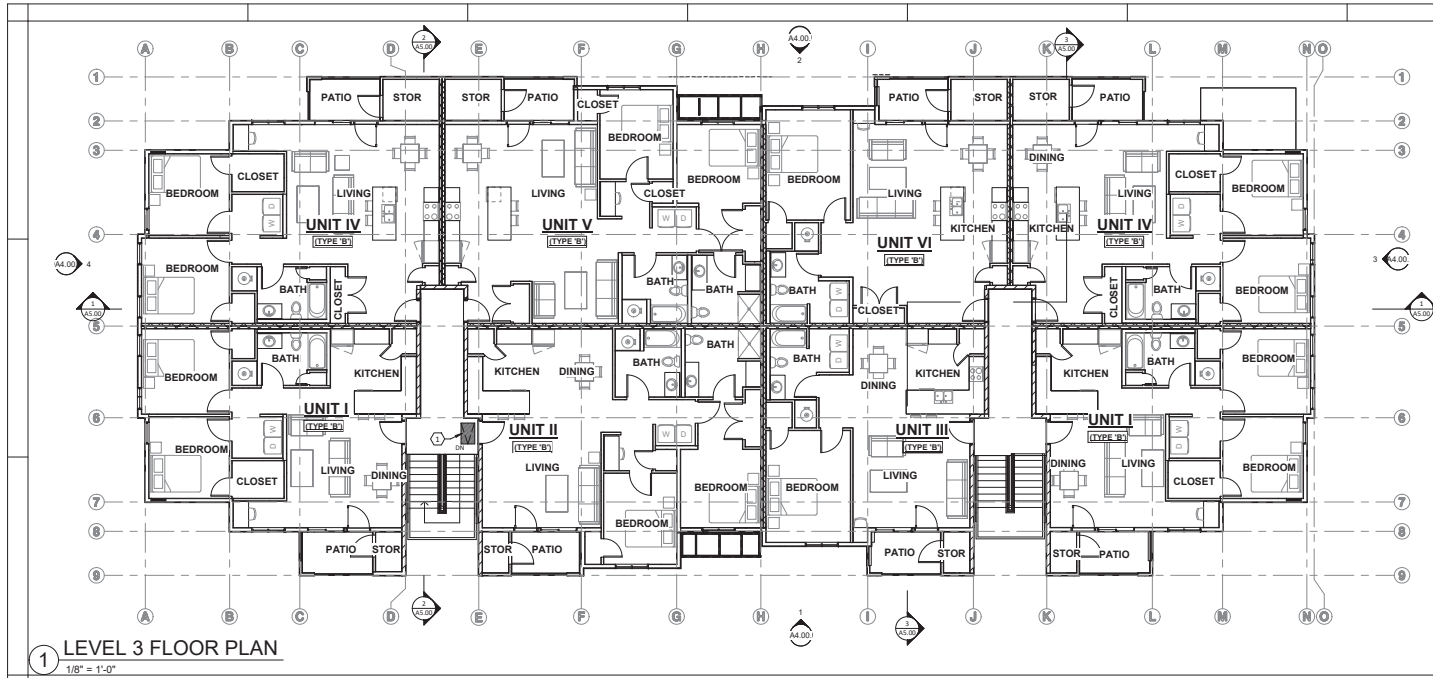
DATE: 05/19/2023

REVISIONS:

FLOOR PLAN

A1.00

PROJECT # P19241-0000



KEYNOTES
1. 1HR RATED ROOFPATCH IN CEILING ABOVE



FOR CONSTRUCTION
THE INFORMATION CONTAINED HEREIN IS PREPARED BY THE ARCHITECTS AND ENGINEERS AND IS NOT TO BE USED OR REPRODUCED WITHOUT THE WRITTEN CONSENT OF JACKOLA ENGINEER & ARCHITECT, P.C.

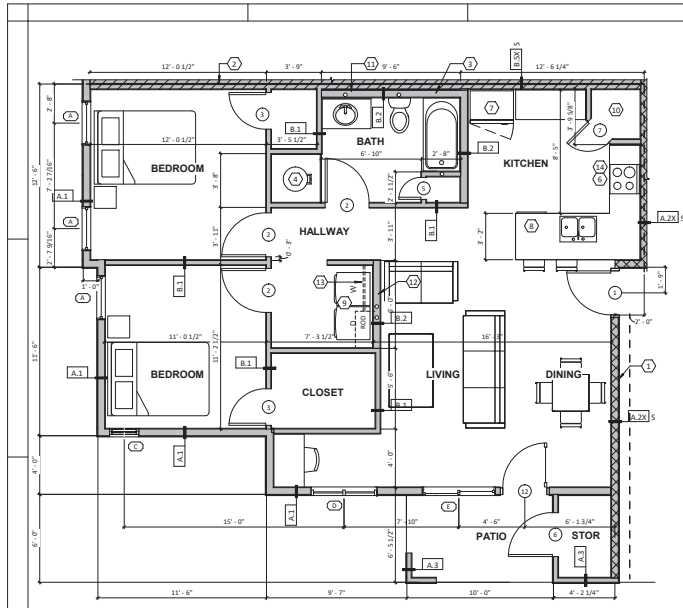
AIRPORT ROAD LLC- PARKLAND MEADOWS APTS - LOT 7, BLDGS A/B
AIRPORT ROAD
KALISPELL, MT

DRAWN: CSJ CHECKED: NNH
DATE: 05/19/2023
REVISIONS:

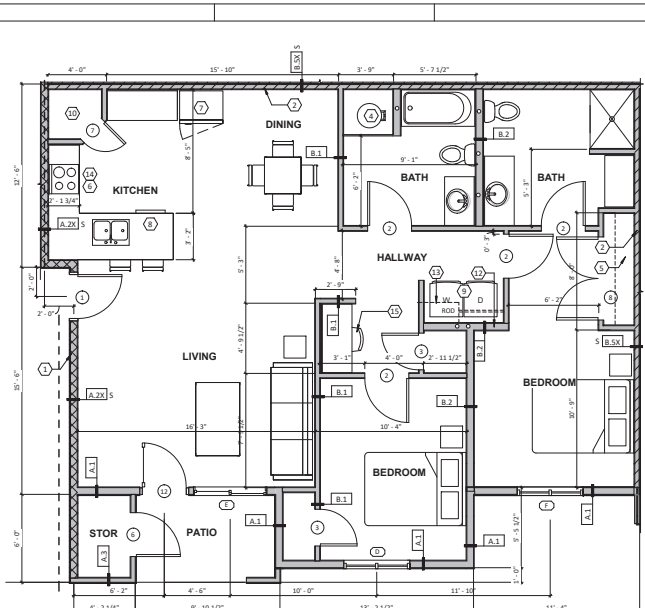
FLOOR PLAN

A1.10

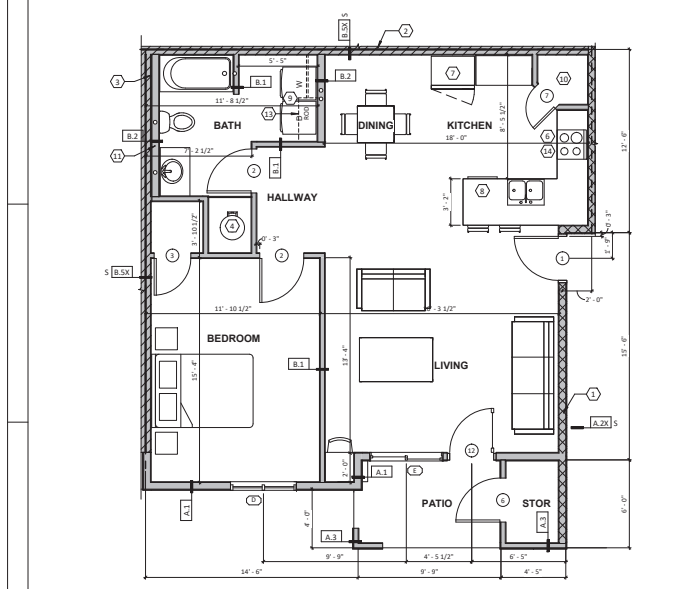
PROJECT: Airport Meadows



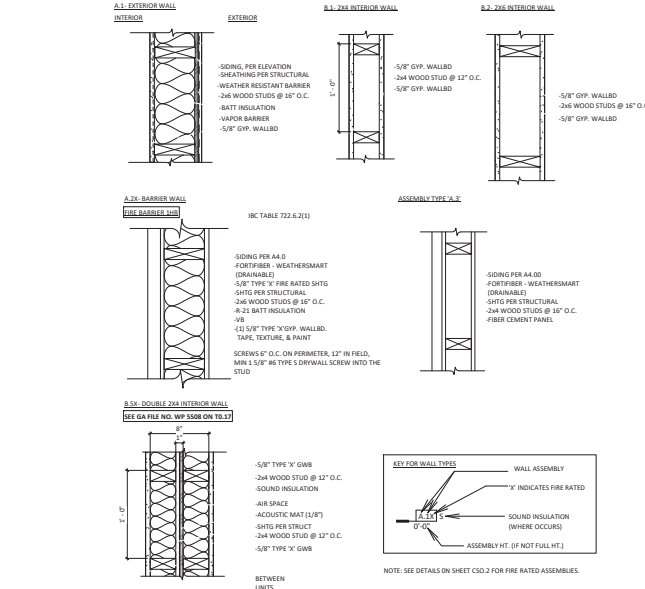
1 UNIT I (TYPE 'B' UNIT)
1/4" = 1'-0"



2 UNIT II (TYPE 'B' UNIT)
1/4" = 1'-0"



3 UNIT III (TYPE 'B' UNIT)
1/4" = 1'-0"



4 WALL TYPES
1 1/2" = 1'-0"

KEYNOTES	
1	1 HR FIRE BARRIER, TYPICAL AROUND STAIR
2	5 HR FIRE PARTITION TYPICAL BETWEEN UNITS
3	GOVS TO HORN POST EXHIBIT TUB TOP @ FIRE PARTITION, TYP. ALL LOCNS
4	WATER HEATER, SEE MEET DWGS.
5	TYPICAL CLOSET SHELF W/ HANGING ROD. (B TYPE 'A' UNIT, TOP OF SHELF @ 46" AFF MAX.)
6	RANGE
7	REFRIGERATOR
8	DISHWASHER
9	WASHER AND DRYER (TYPE 'A' UNIT REQUIRED TO HAVE FRONT LOADING WASHER AND DRYER)
10	1/2" SHELVING @ PANTRY, TOP, ALL
11	1/2" FURRED WALL AT PARTITION WALL BATHROOM
12	1/2" FURRED WALL @ WASHER/DRYER LOCATIONS AS NOTED.
13	15" DEEP UPPER CABINET & ROD, TYP. (B TYPE 'A' UNIT, TOP OF SHELF 46" AFF MAX.)
14	RANGE HOOD/MICROWAVE COMBO (NOT IN TYPE 'A' UNIT)



FOR CONSTRUCTION
THE INFORMATION CONTAINED HEREIN IS PREPARED BY THE ARCHITECT AND MAY NOT BE USED OR REPRODUCED WITHOUT THE WRITTEN CONSENT OF JACKOLA ENGINEER & ARCHITECT, P.C.

AIRPORT ROAD LLC- PARKLAND MEADOWS APTS - LOT 7, BLDGS A/B
AIRPORT ROAD
KALISPELL, MT

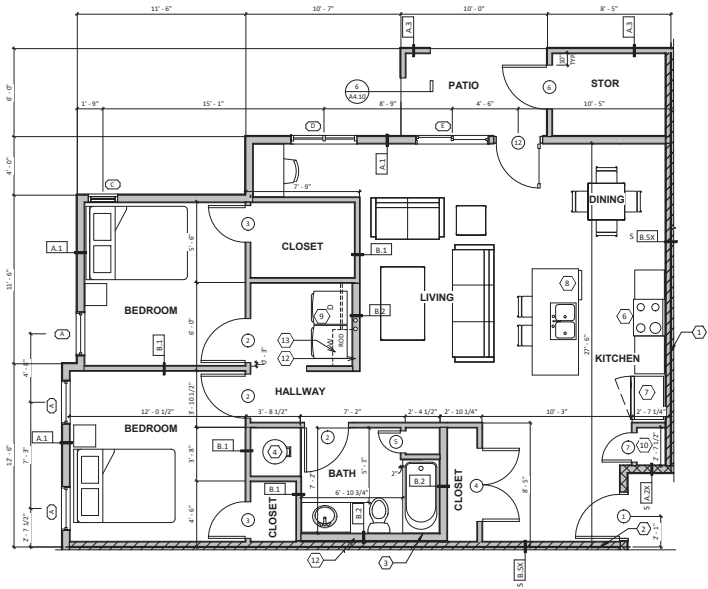
DRAWN: CSI CHECKED: NNH

DATE: 05/18/2023

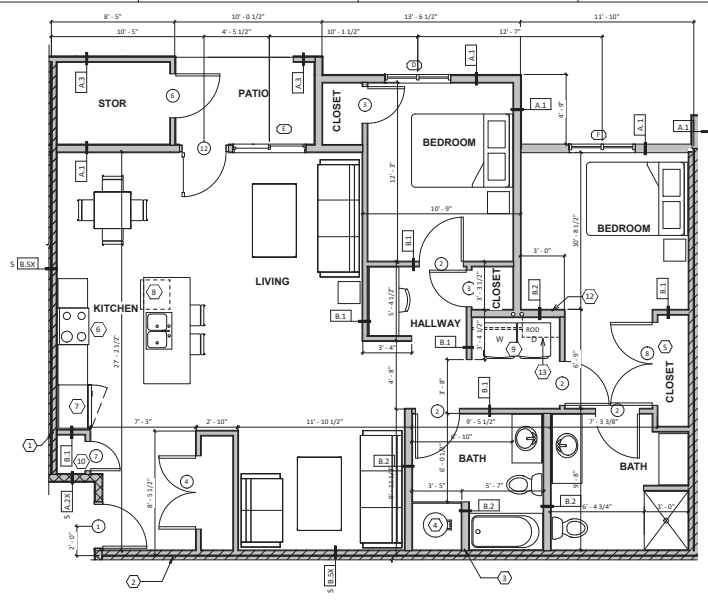
REVISIONS:

TYPICAL UNIT PLANS

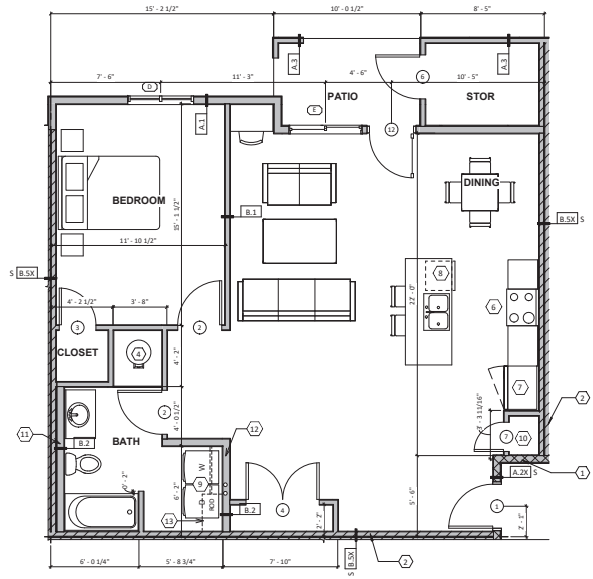
A2.00



1 UNIT IV (TYPE 'B' UNIT)
1/4" = 1'-0"



3 UNIT V (TYPE 'B' UNIT)
1/4" = 1'-0"



2 UNIT VI (TYPE 'B' UNIT)
1/4" = 1'-0"



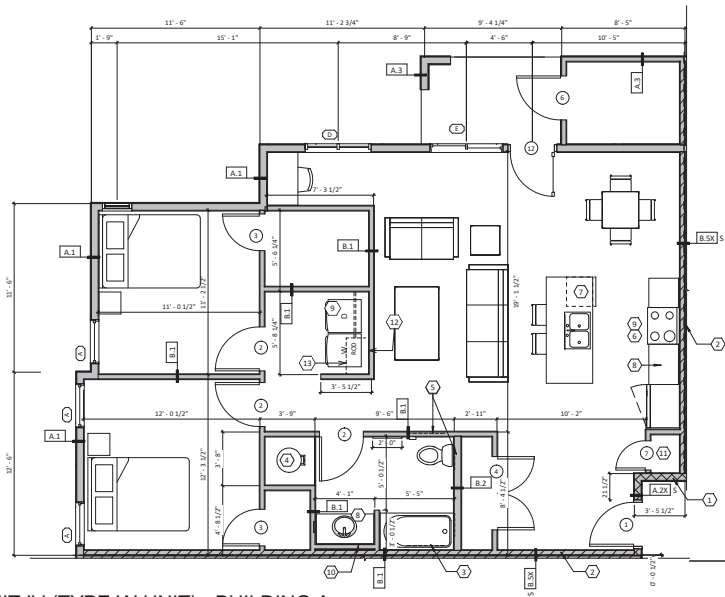
FOR CONSTRUCTION
THE INFORMATION CONTAINED HEREIN IS PREPARED BY THE ARCHITECT AND MAY NOT BE USED OR REPRODUCED WITHOUT THE WRITTEN CONSENT OF JACKOLA ENGINEER & ARCHITECT, P.C.

AIRPORT ROAD LLC- PARKLAND MEADOWS APTS - LOT 7, BLDGS A/B
AIRPORT ROAD
KALISPELL, MT

DRAWN: CSI	CHECKED: NNH
DATE: 05/19/2023	
REVISIONS:	

TYPICAL UNIT PLANS

A2.10



1 UNIT IV (TYPE 'A' UNIT) - BUILDING A
1/4" = 1'-0"

KEYNOTES	
1	1/2 HR FIRE BARRIER, TYPICAL AROUND STAIR
2	2 HR FIRE PARTITION TYPICAL BETWEEN UNITS
3	COVER TO HUB PAST EXISTING TUB TYP. @ FIRE PARTITION, TYP. ALL LOCUS
4	WATER HEATER, SEE MEP DWGS.
5	TYP. BACKING @ ALL TYPE 'A' TYPE 'B' UNITS, SEE 9/ A7.00 FOR LOCATIONS/ REQUIREMENTS
6	RANGE HOOD, TYPE 'A' UNIT ONLY
7	DISHWASHER
8	COUNTERTOP @ 13 1/2" HT, TYP. ALL TYPE 'A' UNITS
9	RANGE
10	1/2" FURRED WALL AT PARTITION WALL BATHROOM
11	116" SHELVING @ PANTRY, TYP. ALL



JACKOLA ARCHITECTS, INC.
400-155-2208 | 400-681-6745 | 406-842-0748
info@jackola.com | jackola.com



FOR CONSTRUCTION
THE INFORMATION CONTAINED HEREIN IS PRELIMINARY. THIS DOCUMENT MAY NOT BE USED OR REPRODUCED WITHOUT THE WRITTEN CONSENT OF JACKOLA ENGR. & ARCH., P.C.

AIRPORT ROAD LLC- PARKLAND MEADOWS APTS - LOT 7, BLDGS A/B
AIRPORT ROAD
KALISPELL, MT

DRAWN: CSI | CHECKED: NNH

DATE: 05/18/2023

REVISIONS:

TYPICAL UNIT PLANS

A2.20



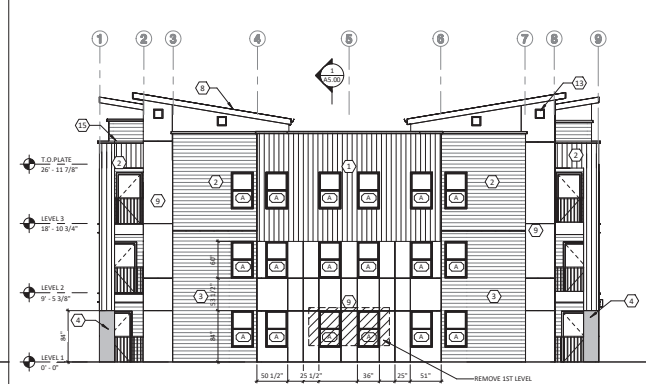
1 FRONT ELEVATION L7
1/8" = 1'-0"



2 BACK ELEVATION L7
1/8" = 1'-0"



3 EAST ELEVATION L7
1/8" = 1'-0"



4 WEST ELEVATION L7
1/8" = 1'-0"

KEYNOTES	
1	WESTERN STATES ANTIQUE RUSTIC BROWN BACKER, METAL PANEL
2	LP SMOOTH LAP SIDING - PAINTED RODDA WESTERN JUNIPER CASES, WOOD PANELS
3	LP SMOOTH LAP SIDING - PAINTED RODDA SLATE CARRU, WOOD PANELS
4	LP 38 SERIES SMOOTH FINISH PANEL, PAINTED RODDA CAD79 FOSSIL, WOOD PANELS
5	ACCENT METAL C CHANNEL AT DECKS, WHERE SHOWN, METAL BLACK, METAL PANELS
6	BLACK POWDER COATED STEEL RAILING SYSTEM BY FORTELL, 42" HIGH MINIMUM
7	LP 38 SERIES SMOOTH FINISH PANEL, PAINTED RODDA FOOHILLS, WOOD PANEL, CASES
8	METAL FASCIA - COLOR CLAY
9	LP SMOOTH LAP SIDING - PAINTED RODDA CAD79 FOSSIL
10	TREX SELECT DECKING - COLOR: HAWANA GOLD
11	BUILDING CORNER TRIM AT LAP SIDING: XOLCP3A
12	MINI TRIM AT LAP SIDING: RL AT TOP, RLK AT BOTTOM
13	ATTIC VENTS 4 TYP. PER ROOF, 11.5 SQ. IN. OF FREE AREA EACH
14	METAL RAILING - POWDER COATED WHITE FINE TEXTURE - RAL 9003 R933020
15	METAL CAP - PREFINISHED BLACK

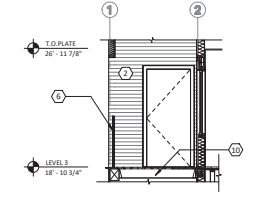
* FOR LAP SIDING: INSIDE CORNER: XIC, HORIZ. STARTER STRIP: XSM OUTSIDE CORNER: XOLCP3A.

* FOR PANEL SIDING: VERTICAL JOINTS: RV716, HORIZONTAL JOINTS: RV716, OUTSIDE CORNER: XOLCP716, INSIDE CORNER: XOLCP716, TERMINATION: FR716

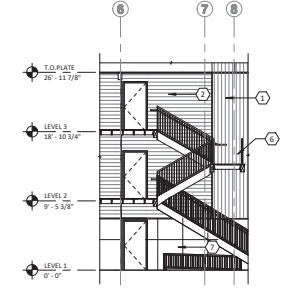


FOR CONSTRUCTION

THE INFORMATION CONTAINED HEREIN IS PRELIMINARY. THIS DOCUMENT MAY NOT BE USED OR REPRODUCED WITHOUT THE WRITTEN CONSENT OF JACKOLA ENGINEERS & ARCHITECTS, P.C.



5 TYP. ELEVATION INSIDE BALCONIES.
1/4" = 1'-0"



6 TYP. ELEVATION INSIDE STAIRWELL
1/8" = 1'-0"

AIRPORT ROAD LLC- PARKLAND MEADOWS APTS - LOT 7, BLDGS A/B

AIRPORT ROAD KALISPELL, MT

DRAWN: CSI	CHECKED: NNH
DATE: 05/19/2023	
REVISIONS:	

EXTERIOR ELEVATIONS BUILDING LOT 7

A4.00.