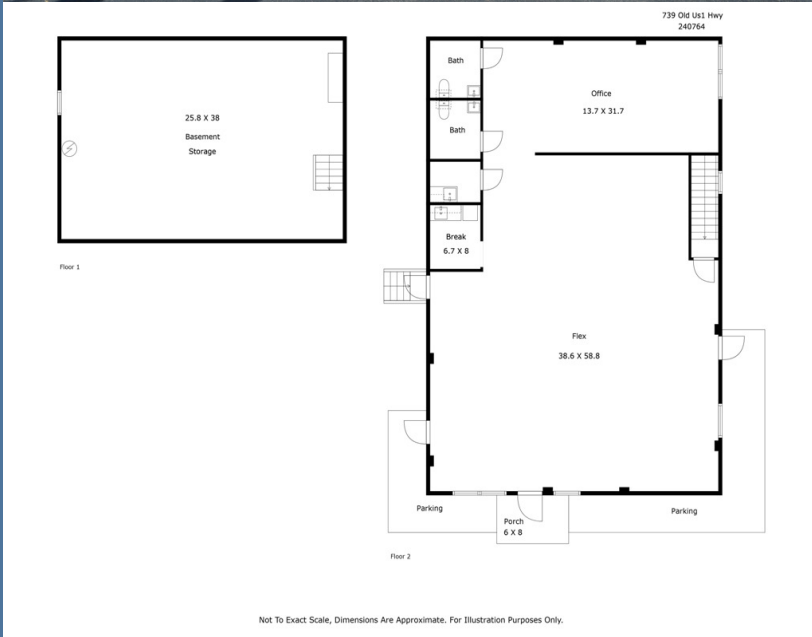


# 739 Old US 1 Hwy Moncure NC

\$12 per Sq Ft MG

2400 RSF



Convenient to Apex/Cary, Sanford or Pittsboro and less than 1 mile from US 1 Interchange. Excellent condition and attractively priced with room for possible fenced yard for parking or layout. B-1 Zoning with Chatham Co allows for a multitude of Office and Retail Uses. Open Floor Plan with Kitchen area, Handicap Accessible Bathrooms and 1100 feet of Basement Storage. LL has AV Equipment and Furniture for additional Fee. \$12 per Ft Modified Gross. Tenant Responsible for Utilities and Janitorial.

## Doug Jacobs, Broker



2128 High House Rd  
Suite 100  
Cary NC 27519

Doug: 919-612-1532

E-mail:

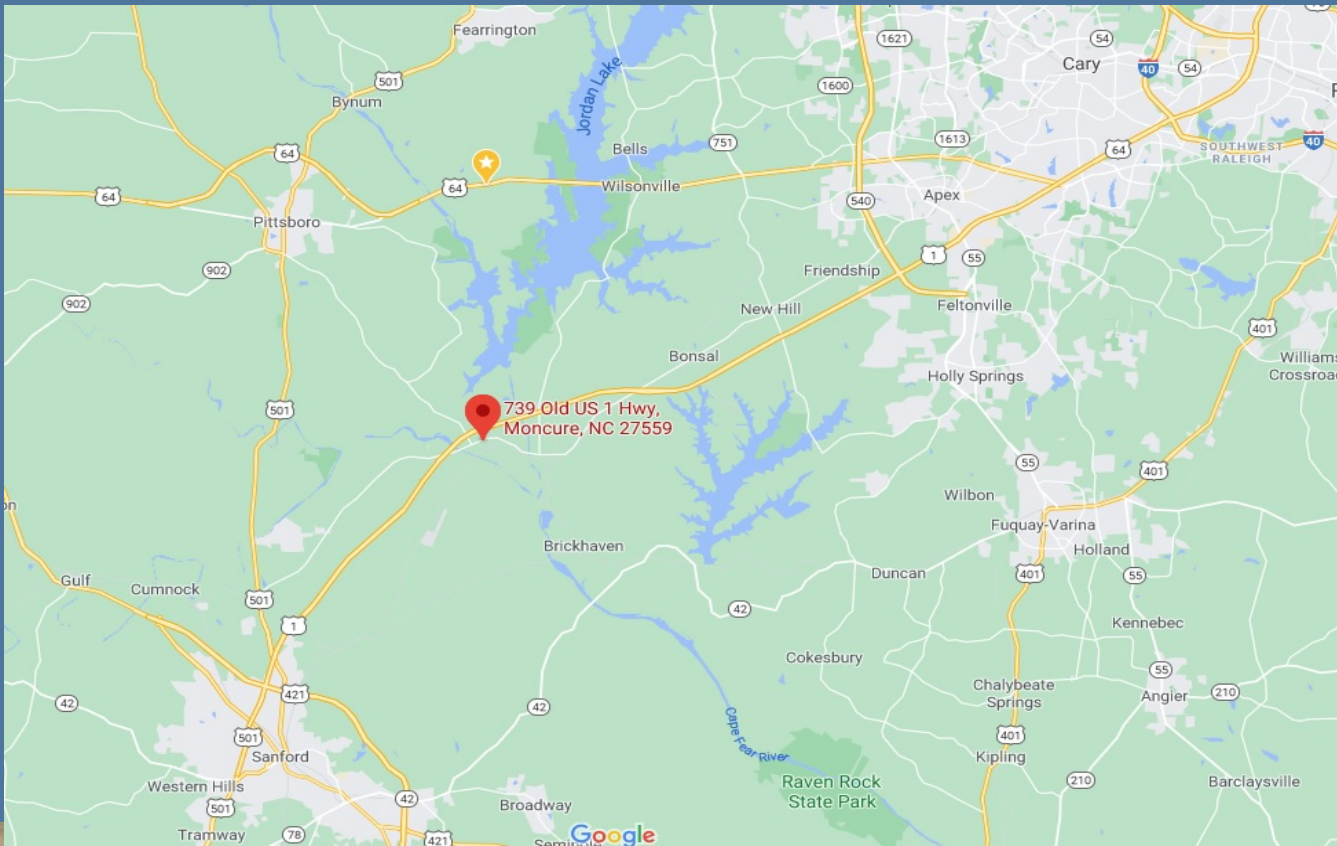
[doug@jacobsteamrealestate.com](mailto:doug@jacobsteamrealestate.com)

Information deemed reliable but not guaranteed. Each office independently owned and operated.

# 739 Old US 1 Hwy Moncure NC

\$12 per Sq Ft MG

2400 RSF



Doug Jacobs, Broker



2128 High House Rd  
Suite 100  
Cary NC 27519

Doug: 919-612-1532

E-mail:

[doug@jacobsteamrealestate.com](mailto:doug@jacobsteamrealestate.com)