

FOR LEASE OR SALE

1460 EAST MAIN STREET
EL CAJON, CA 92021
± 14,860 SF



EXCLUSIVE CONTACTS:



Mark Silverman, SIOR
Executive Vice President
DRE 00899837
PH: +1 (619) 241-2336
E: msilverman@naisandiego.com



Sarah Anane
Vice President
DRE 01989603
PH: +1 (619) 241-2342
E: sanane@naisandiego.com

NAI San Diego

PROPERTY SUMMARY



EXECUTIVE SUMMARY

Building Size:	±14,860 SF
Parcel Size:	±0.89 Acres
Available:	July 1, 2024
Price:	Call Agent
APN:	511-012-32
Zoning:	City of El Cajon C-G
Parking:	4.4/1,000 SF
Location Highlights:	Great Access to I-8
Building Features:	2-Story Elevator Served, Fire Sprinklered, 17 Electric Meters, Plumbing Throughout, Divisible

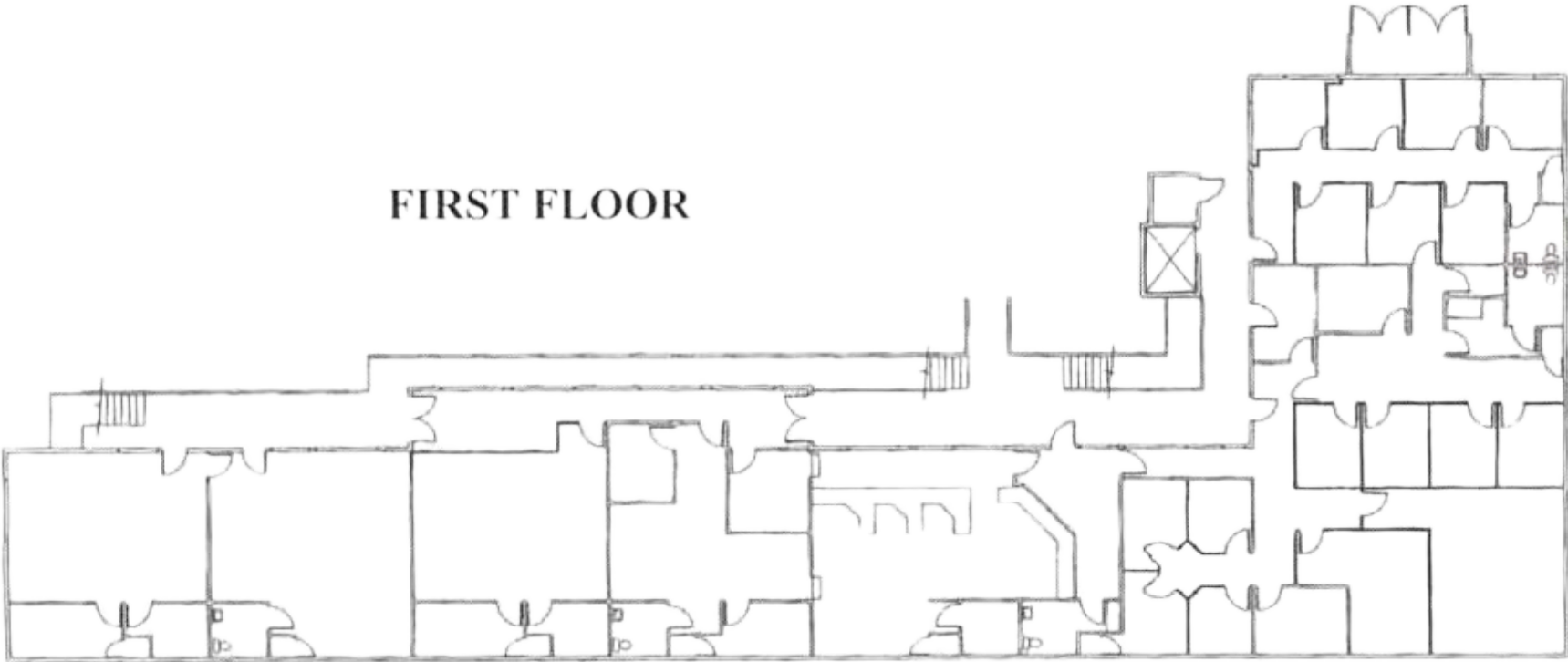
PROPERTY DESCRIPTION:

Freestanding medical office property presently occupied by Sharp Mesa Vista East County Outpatient Mental Health Services.

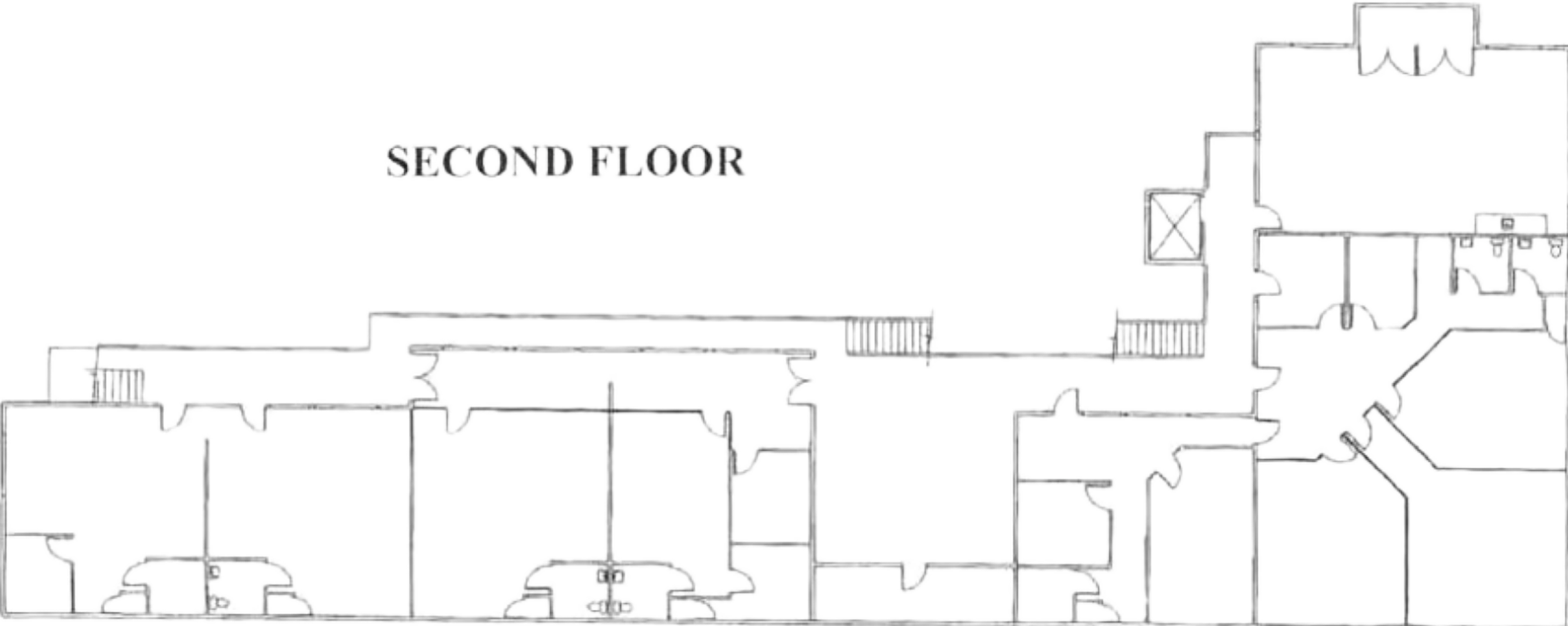
[CLICK HERE TO VIEW ZONING C-G](#)

FLOOR PLAN

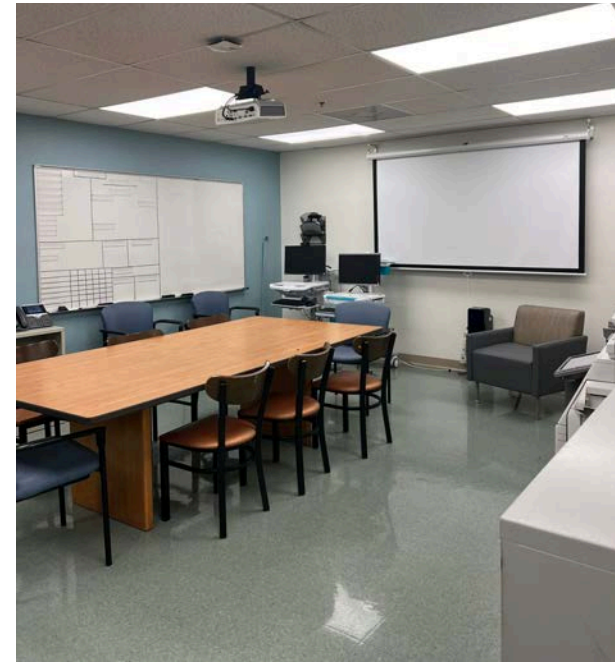
FIRST FLOOR



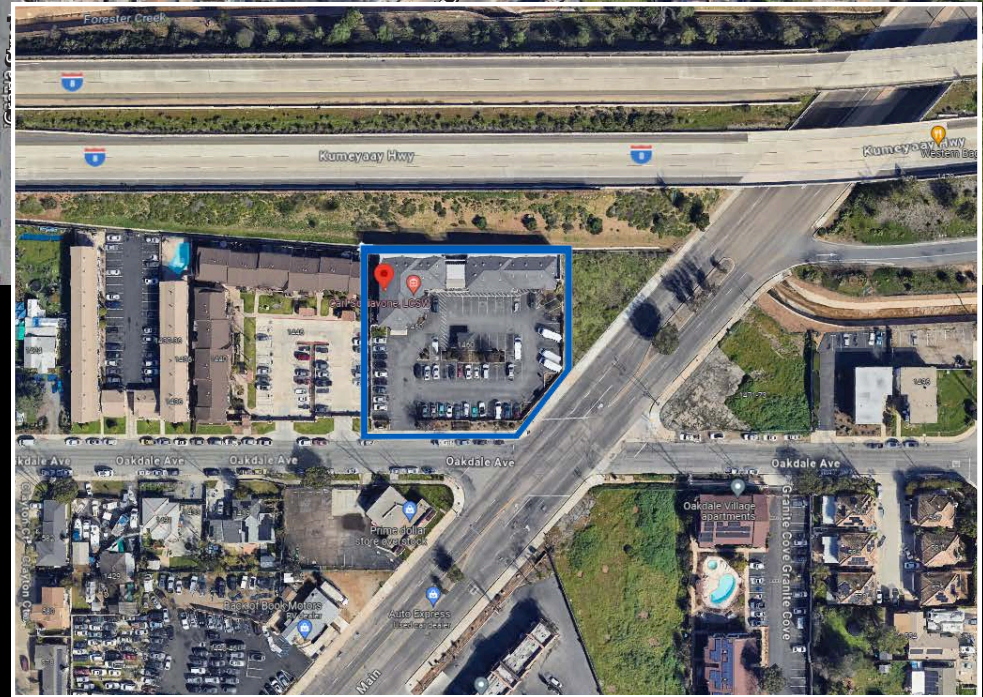
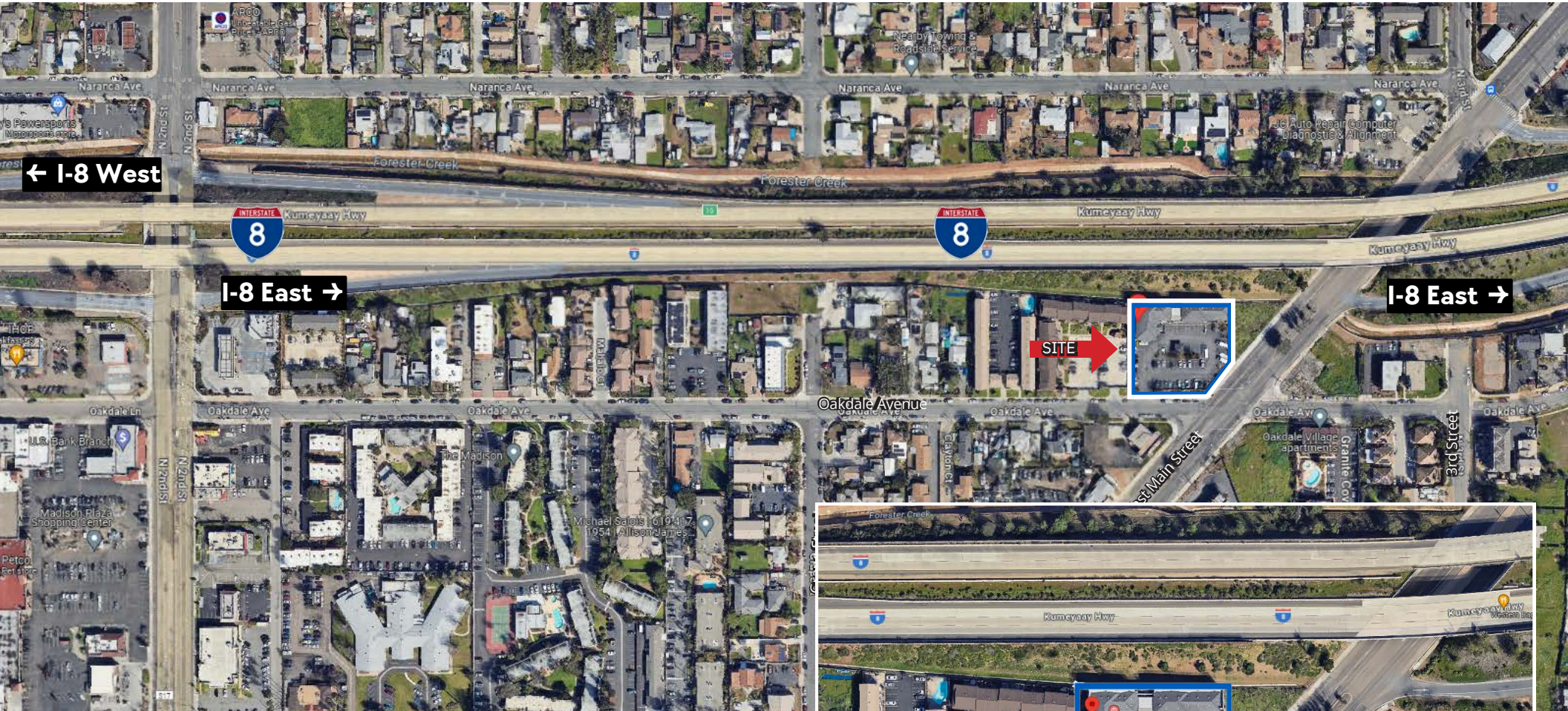
SECOND FLOOR



Interiors



AERIAL VIEW



NAI San Diego

EXCLUSIVE CONTACTS:

Mark Silverman, SIOR
Executive Vice President
DRE 00899837
PH: +1 (619) 241-2336

E: msilverman@naisandiego.com

Sarah Anane
Vice President
DRE 01989603
PH: +1 (619) 241-2342
E: sanane@naisandiego.com