

Newark Retail Opportunity

915 Broad Street, Newark NJ



1,890 SF

1,892 SF Available
For Lease Only

Blake Shanaphy
Vice President
+1 201 424 3506
blake.shanaphy@jll.com



Property Highlights

- » Across the street from city hall, Courtyard Marriott, Prudential Center
- » Heavy daily vehicular traffic counts of \pm 30,000 ADT
- » Heavy pedestrian traffic counts
- » Highly visible street retail with residential situated above
- » Join IHOP, Cornbread, and Brick City Vegan
- » Seeking well qualified synergistic tenants
- » Situated at a signalized intersection

Retail Availability

- » 1,892 SF

Asking Rent

- » Please call for a quote

Neighboring Retail

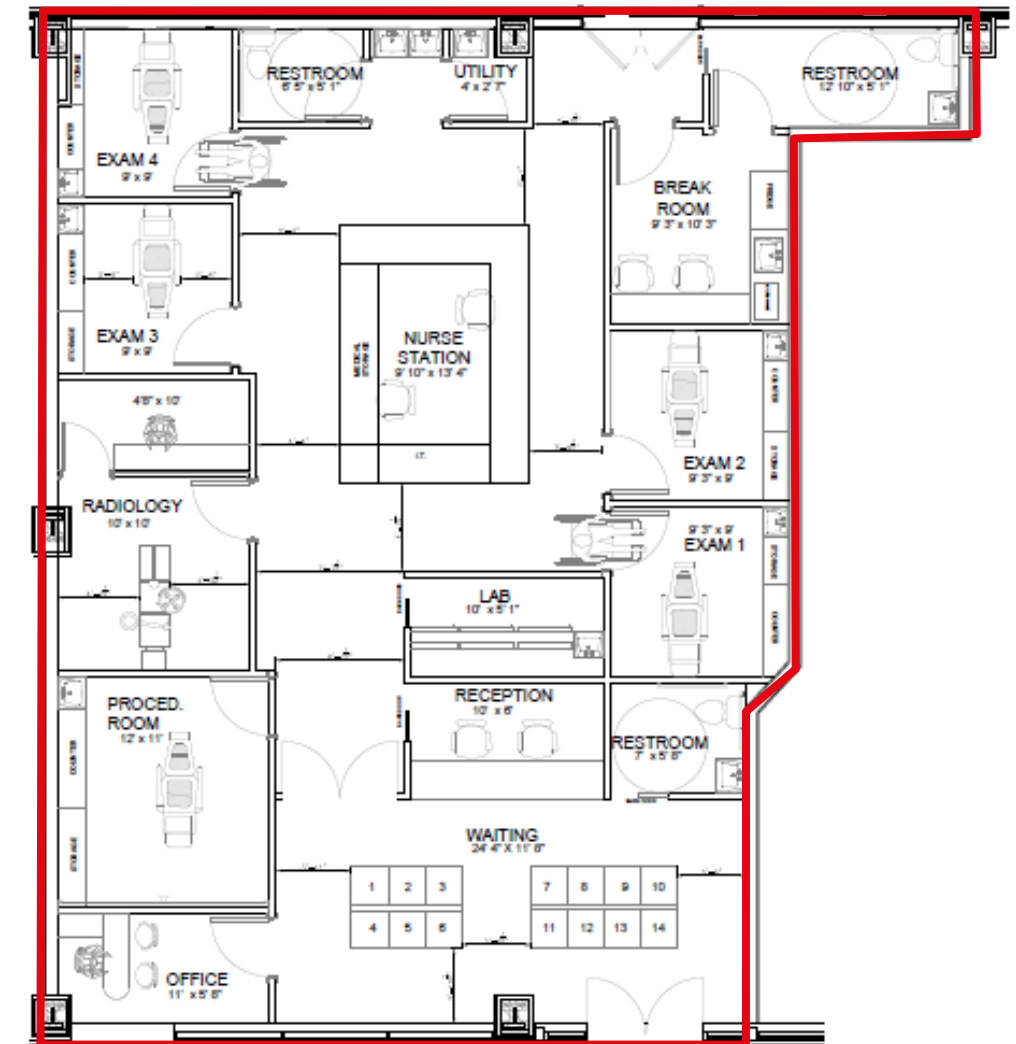
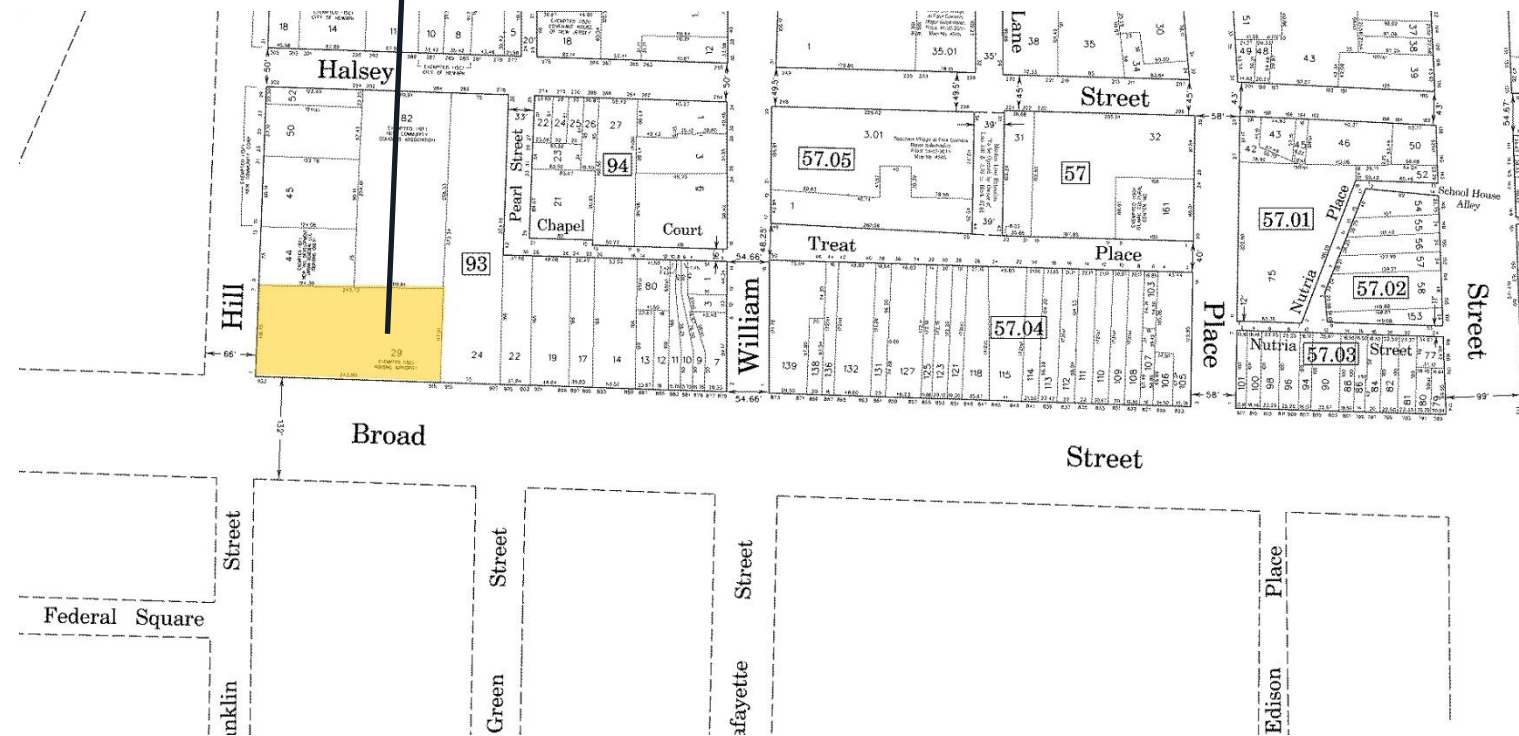
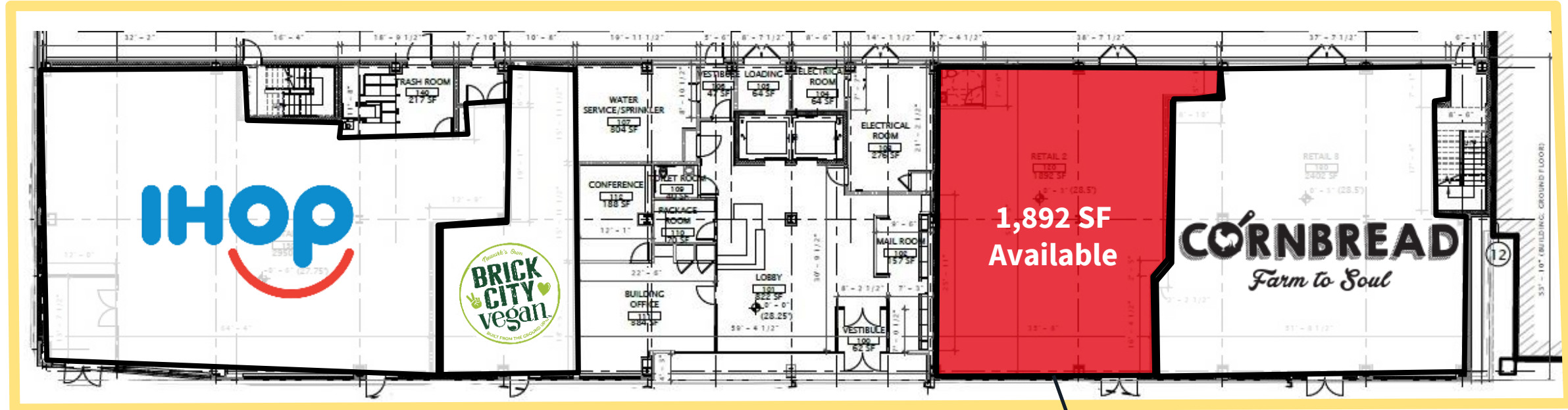


COURTYARD[®]
BY MARRIOTT

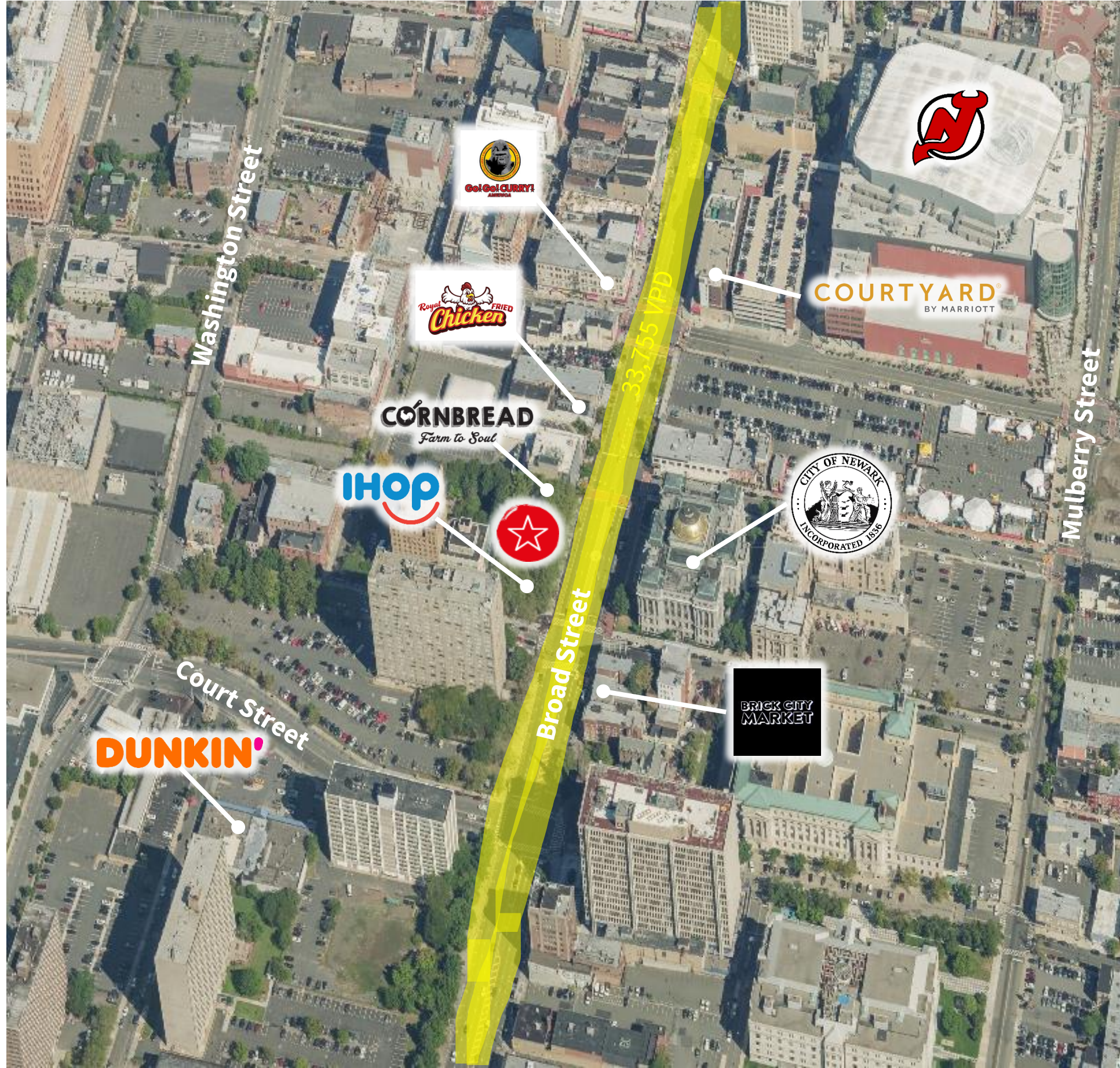
CORNBREAD
Farm to Soul



Site Plan



Retail Aerial



915 Broad Street, Newark NJ

915 Broad Street



915 Broad Street in Newark offers an excellent retail opportunity due to its prime location in New Jersey's largest city. Situated on a main thoroughfare, it benefits from high pedestrian traffic and easy accessibility. The diverse local demographics and vibrant mix of nearby businesses create a strong market for retail. With Newark's ongoing economic development, this property's value as a retail location is further enhanced. Its central position, combined with the city's growth trajectory, makes it an attractive option for businesses seeking to establish or expand their presence in a thriving urban center.



Market Aerial



59,325
Population



\$59,011
Avg. HH Income



94,793
Employees



4,657
Businesses