



## 1600 - 1624 E 11th

Hutchinson, Kansas

### Property Features

- 2,760 SF space available
- Existing tenants: UPS, Joy's, Sally Beauty, Snip N Clip and Helping Hand Quick Cash
- Area users include: Wal-Mart, Home Depot, JCPenny, Hobby Lobby, Subway, Arby's, McDonald's, Fazoli's and Lone Star Steak House
- Lease rate: \$14.00 PSF, NNN  
Estimated NNN: \$5.77/ PSF



### 2013 Demographics

Population	Households	Average HH Income
■ 1 Mile: 5,712	■ 1 Mile: 2,389	■ 1 Mile: \$38,901
■ 3 Mile: 38,767	■ 3 Mile: 15,526	■ 3 Mile: \$48,732
■ 5 Mile: 48,808	■ 5 Mile: 19,812	■ 5 Mile: \$51,786

For more information:

**Troy Farha**

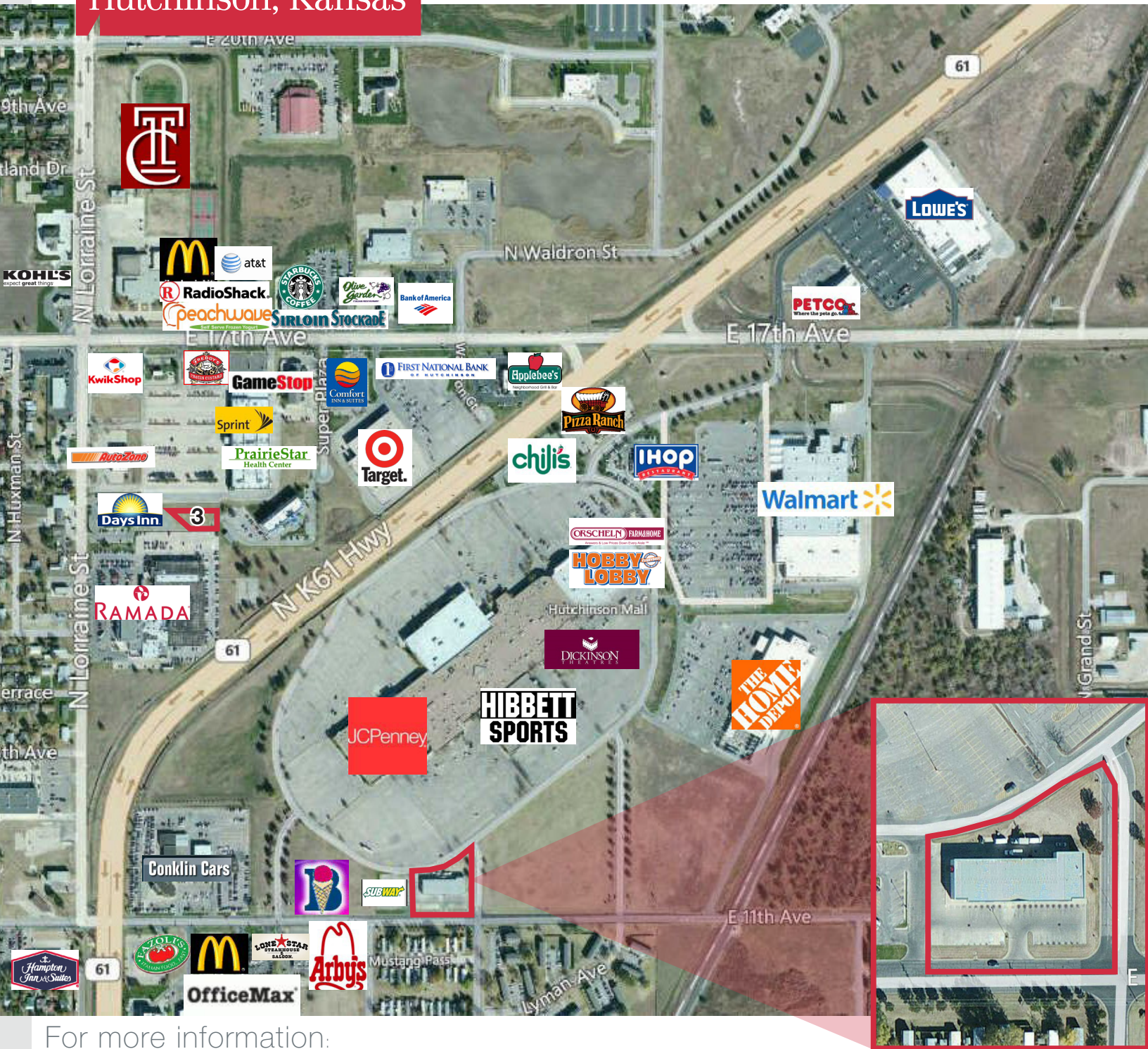
316.262.0000 • TFarha@NAIMartens.com

**Nathan Farha, CCIM**

316.262.0000 • NFarha@NAIMartens.com

For Lease  
Retail Space  
Available  
Hutchinson, Kansas

**NAI** Martens



For more information:

**Troy Farha**

316.262.0000 • TFarha@NAIMartens.com

**Nathan Farha, CCIM**

316.262.0000 • NFarha@NAIMartens.com

NAI Martens  
435 South Broadway  
Wichita, KS 67202  
316.262.0000

[BuildingKansas.com](http://BuildingKansas.com)

Independently Owned and Operated. The information contained herein was obtained from sources believed reliable; however, NAI Martens Company makes no guarantees, warranties or representations as to the completeness or accuracy thereof. The presentation of this property is submitted subject to errors, omissions, change of price or conditions prior to sale or lease, or withdrawal without notice.