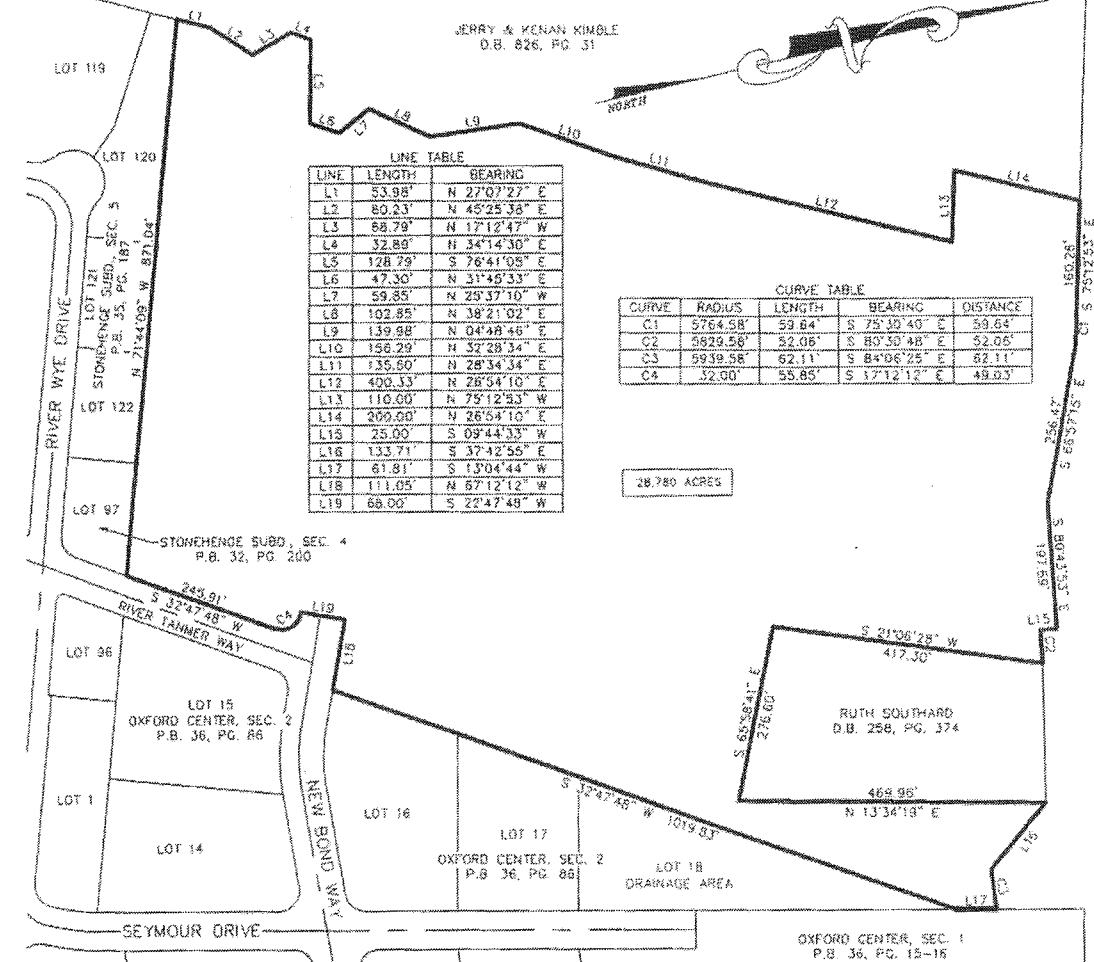


JERRY & YENIAN KIMBLE
D.B. 826, PG. 31



LINE TABLE

LINE	LENGTH	BEARING
L1	53.98'	N 27°07'27" E
L2	80.23'	N 45°25'38" E
L3	68.79'	N 17°12'47" W
L4	32.89'	N 34°14'30" E
L5	128.79'	S 76°41'08" E
L6	47.30'	N 31°49'33" E
L7	59.85'	N 29°37'10" W
L8	102.85'	N 38°21'02" E
L9	139.98'	N 04°48'46" E
L10	156.29'	N 32°28'34" E
L11	135.60'	N 28°34'34" E
L12	400.33'	N 26°54'10" E
L13	110.00'	N 75°12'53" W
L14	260.00'	N 26°54'10" E
L15	25.00'	S 09°44'33" W
L16	133.71'	S 37°42'55" E
L17	61.81'	S 13°04'44" W
L18	111.05'	N 67°12'12" E
L19	68.00'	S 22°47'48" W

CURVE TABLE

CURVE	RADIUS	LENGTH	BEARING	DISTANCE
C1	5764.58'	59.84'	S 75°30'40" E	59.84'
C2	5829.56'	52.06'	S 83°50'48" E	52.06'
C3	5939.58'	62.11'	S 84°06'25" E	62.11'
CA	32.00'	55.85'	S 17°12'12" E	49.03'

28.780 ACRES

U.S. HWY 231 - MORGANTOWN ROAD

PROPERTY DESCRIPTION - OXFORD CENTER, SECTION 3 (PROPOSED)

A certain tract of land located on New Bond Way, and U.S. Highway 231 City of Bowling Green, Warren County, Kentucky and being more particularly described as follows:

Beginning at a point in the north right-of-way line of New Bond Way, also being the southwest corner to Lot 16, Oxford Center, Section 2; thence with said right-of-way line, as follows: North 67 degrees 12 minutes 12 seconds West, 111.05 feet to a point; thence South 22 degrees 47 minutes 48 seconds West, 68.00 feet to a point in the west right-of-way line of River Tanner Way; thence with said right-of-way line, as follows: with a circular curve to the right, having a radius of 32.00 feet, an arc length of 55.85 feet, with a chord bearing of South 17 degrees 12 minutes 12 seconds East, 45.03 feet to a point; thence South 32 degrees 47 minutes 48 seconds West, 245.91 feet to a point at the northeast corner to Lot 97, Stonehenge Subdivision, Section 4; thence with the north line of Lot 97 and continuing with the north line of Stonehenge Subdivision, Section 5, North 31 degrees 44 minutes 09 seconds West, 871.04 feet to a point in the east line of Jerry Kimble (D.B. 826, Pg. 31); thence with said line, as follows: North 27 degrees 07 minutes 27 seconds East, 53.98 feet to a point; thence North 45 degrees 25 minutes 38 seconds East, 80.23 feet to a point; thence North 17 degrees 12 minutes 47 seconds West, 68.79 feet to a point; thence North 34 degrees 14 minutes 30 seconds East, 32.89 feet to a point; thence South 76 degrees 41 minutes 08 seconds East, 128.79 feet to a point; thence North 31 degrees 49 minutes 33 seconds East, 47.30 feet to a point; thence North 29 degrees 37 minutes 10 seconds West, 59.85 feet to a point; thence North 38 degrees 21 minutes 02 seconds East, 102.85 feet to a point; thence North 04 degrees 48 minutes 46 seconds East, 139.98 feet to a point; thence North 32 degrees 28 minutes 34 seconds East, 156.29 feet to a point; thence North 28 degrees 34 minutes 34 seconds East, 135.60 feet to a point; thence North 26 degrees 54 minutes 10 seconds East, 400.33 feet to a point; thence North 75 degrees 12 minutes 53 seconds West, 110.00 feet to a point; thence North 26 degrees 54 minutes 10 seconds East, 260.00 feet to a point; thence North 09 degrees 44 minutes 33 seconds West, 25.00 feet to a point; thence South 37 degrees 42 minutes 55 seconds East, 133.71 feet to a point; thence South 13 degrees 04 minutes 44 seconds West, 61.81 feet to a point; thence North 67 degrees 12 minutes 12 seconds East, 111.05 feet to a point; thence South 22 degrees 47 minutes 48 seconds West, 68.00 feet to a point in the south right-of-way line of U.S. Highway 231 (Morgantown Road); thence with said right-of-way line, as follows: South 75 degrees 12 minutes 53 seconds East, 160.26 feet to a point; thence with a circular curve to the right, having a radius of 5764.58 feet, an arc length of 59.84 feet, with a chord bearing of South 75 degrees 30 minutes 40 seconds East, 59.84 feet to a point; thence South 65 degrees 07 minutes 15 seconds East, 250.47 feet to a point; thence South 80 degrees 43 minutes 53 seconds East, 197.69 feet to a point; thence South 09 degrees 44 minutes 33 seconds West, 25.00 feet to a point; thence with a circular curve to the left, having a radius of 5829.56 feet, an arc length of 52.06 feet, with a chord bearing of South 80 degrees 30 minutes 48 seconds East, 52.06 feet to a point at the northwest corner of Ruth Southard (D.B. 258, Pg. 374); thence with the lines of Southard, as follows: South 21 degrees 06 minutes 28 seconds West, 417.30 feet to a point; thence South 65 degrees 58 minutes 41 seconds East, 276.60 feet to a point; thence North 13 degrees 34 minutes 19 seconds East, 469.98 feet to a point in the south right-of-way line of U.S. Highway 231; thence continuing with said right-of-way line South 17 degrees 12 minutes 53 seconds East, 133.71 feet to a point; thence with a circular curve to the left, having a radius of 5939.58 feet, an arc length of 62.11 feet, with a chord bearing of South 84 degrees 06 minutes 25 seconds East, 62.11 feet to a point in the north line of Oxford Center, Section 1 (P.B. 36, Pg. 15 & 16); thence with the west line of said subdivision South 13 degrees 04 minutes 44 seconds West, 61.81 feet to a point, corner to Lot 18, Oxford Center, Section 2; thence with the west line of Oxford Center, Section 2, South 32 degrees 47 minutes 48 seconds West, 1019.83 feet to the point of beginning, containing 28.780 acres, said parcel being Section 3 (proposed) of Oxford Center.

NOT TO SCALE

OXFORD CENTER, SECTION 3
(FUTURE DEVELOPMENT)
CITY OF BOWLING GREEN
WARREN COUNTY, KENTUCKY

01-20-2006

F:\04-3377\EXHIBIT-LEGAL_2.dwg

PREPARED BY:

DONALD K. BRYANT, P.L.S. NO. 1948

DATE

BEi BRYANT ENGINEERING INC.

Civil Engineering · Land Surveying

4215 Benttree Drive
P.O. Box 21382
Owensboro, Kentucky 42304

270-685-2811