

Office | For Lease

CBRE

Presidio Pointe

275 W Continental Rd
Green Valley, AZ 85622

\$2,000 Broker Bonus for an Executed Lease



275 W Continental Rd

Green Valley, AZ 85622

For Lease

Property Details

- + Generous Tenant Improvement Allowance
- + Easy access off Continental Rd and I-19

Space Availability

- + Suite 181 ±2,533 RSF
- + Suite 133 ±1,742 RSF

Lease Rate

- + \$23.00/SF Full Service
net of janitorial

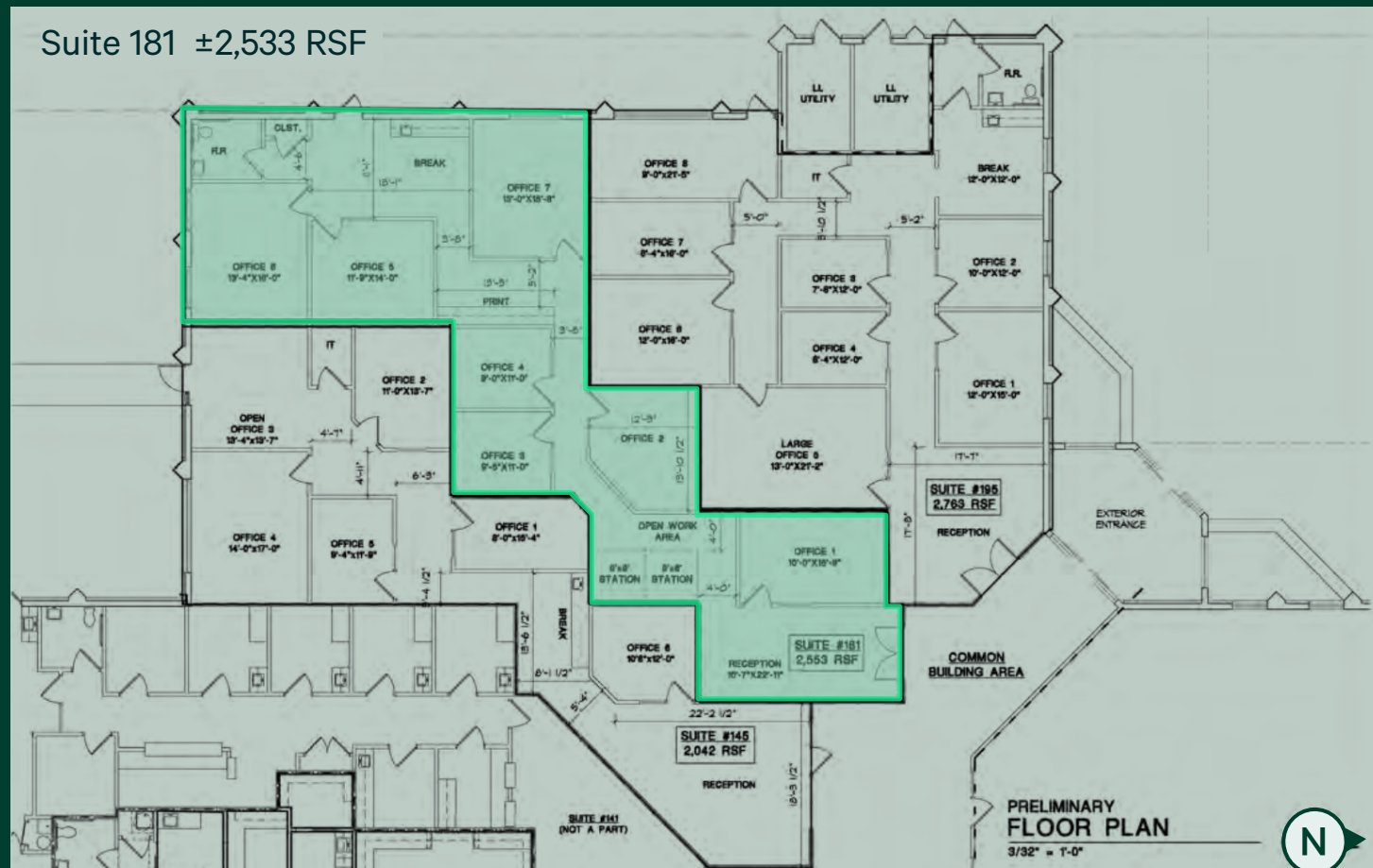


Green Valley, AZ 85622

For Lease

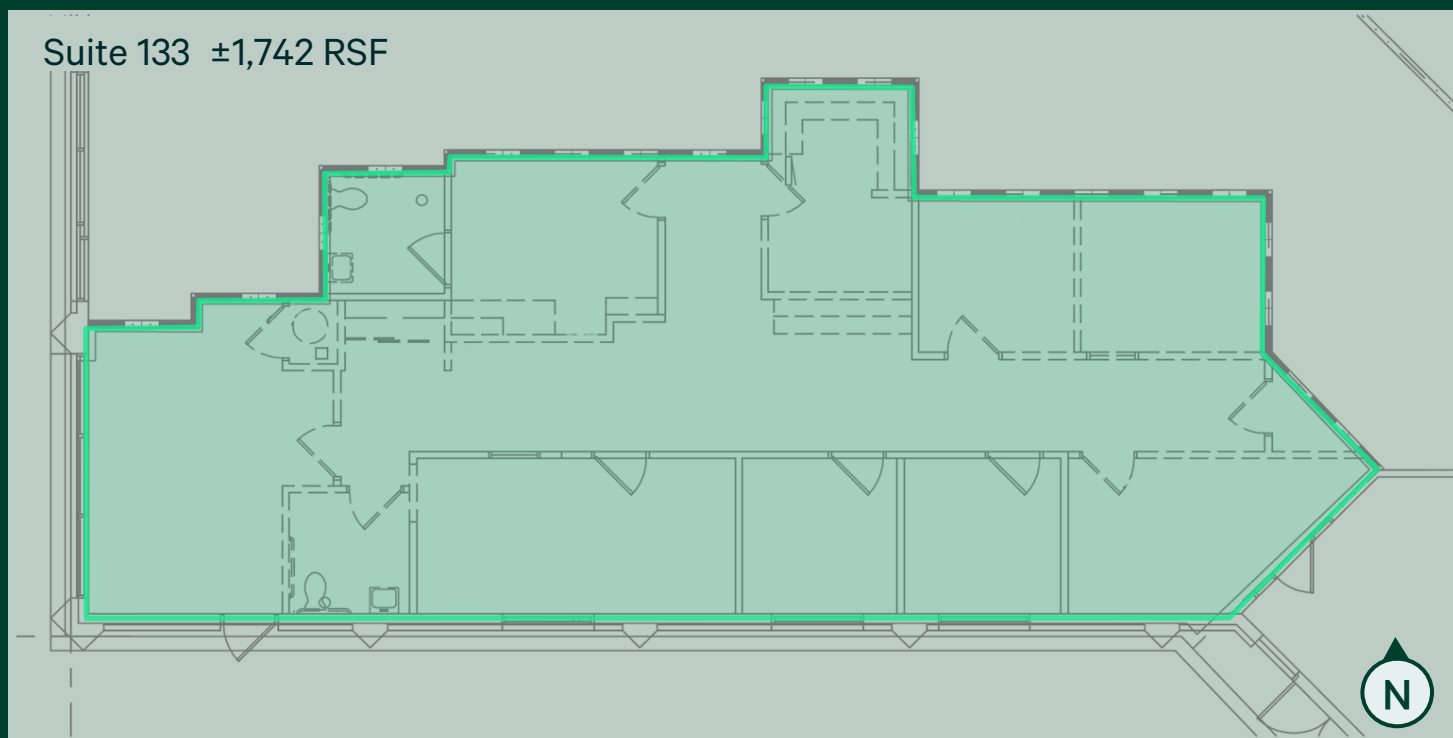
Floor Plan

Suite 181 $\pm 2,533$ RSF



Floor plan not to scale

Suite 133 $\pm 1,742$ RSF



Floor plan not to scale

275 W Continental Rd

Green Valley, AZ 85622

For Lease



Contact Us

David Montijo

First Vice President

+1 520 323 5136

david.montijo@cbre.com

© 2026 CBRE, Inc. All rights reserved. This information has been obtained from sources believed reliable, but has not been verified for accuracy or completeness. You should conduct a careful, independent investigation of the property and verify all information. Any reliance on this information is solely at your own risk. CBRE and the CBRE logo are service marks of CBRE, Inc. All other marks displayed on this document are the property of their respective owners, and the use of such logos does not imply any affiliation with or endorsement of CBRE. Photos herein are the property of their respective owners. Use of these images without the express written consent of the owner is prohibited.

www.cbre.com

CBRE