



Commercial Land FOR SALE

Explore this prime 6.6-acre commercial land at 11816 S Western Ave, South Oklahoma City, available for \$795,000. Located in a high-traffic area, it's ideal for developing warehouses, office parks, or storage units. With strategic positioning and ample space, it's a top opportunity for investors. Contact us today for more information.

PROPERTY HIGHLIGHTS

- SALES PRICE: \$795,000 / \$2.76 PSF
- LOT SIZE: 6.6 ACRES
- ZONING: C3 & O2

Property Features

6.6 Acres Available
High Traffic Area

Land with many of potential uses
50' frontage entry on Western Ave

Zoned C3 & O2
Sewer & Water on Property

Call Us for More Info:
405-691-9767

Buchanan Realty Group
11801 S Western Ave STE A,
Oklahoma City, OK 73170

Steve Buchanan, CCIM
Email: steve@buchananrealty.net
www.buchananrealty.net



Call Us for More Info:
405-691-9767

Buchanan Realty Group
11801 S Western Ave STE A,
Oklahoma City, OK 73170

Steve Buchanan, CCIM
Email: steve@buchananrealty.net
www.buchananrealty.net



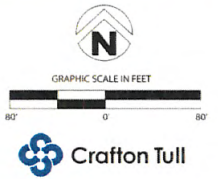
SUMMARY

SITE AREA: ~6.64 ACRES
 ZONING: C-3
 BUILDINGS: 10
 72,000 SQ. FT. EACH BLDG. SQ. FT.: 7,200 SQ. FT
 OFFICE AREA: 22,392 SQ. FT.
 WAREHOUSE AREA: 49,608 SQ. FT.
 PARKING REQUIRED: 117 (Based on Partial Office and Warehouse Designation)
 PARKING SHOWN: 124

S. Western Ave and SW 119th Street Tract
 Oklahoma City, OK

Concept Sketch B

February, 2021



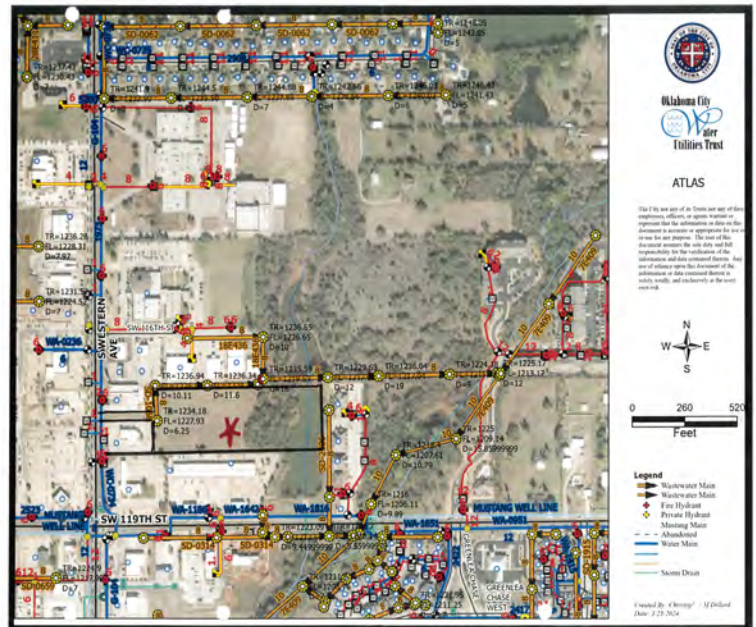
ZONING INFORMATION



Zoning Overview

The subject property area is zoned "C-3" Community Commercial District and "O-2", General Office District. These districts are further described as follows:

"C-3" Community Commercial District



Call Us for More Info:
405-691-9767

Buchanan Realty Group
 11801 S Western Ave STE A,
 Oklahoma City, OK 73170

Steve Buchanan, CCIM
 Email: steve@buchananrealty.net
www.buchananrealty.net

