

1

Madison Street
East Rutherford, New Jersey

2,308 SF Industrial/Flex For Lease



Property Features

- 2,308 SF for lease
- 2,066 SF warehouse
- 242 SF office
- 1 tailgate
- 20' ceiling height
- Air conditioned offices
- Ample parking
- Available immediately



FOR MORE INFORMATION

Andrew Somple, SIOR | Senior Vice President
P: 201.488.5800 x151 | asomple@naihanson.com

Jessica Curry | Associate
P: 201.488.5800 x199 | jcurry@naihanson.com

NAI James E. Hanson
COMMERCIAL REAL ESTATE SERVICES, WORLDWIDE

FOLLOW US: [f](#) [@](#) [X](#) [in](#) [v](#) | NJ Offices: Teterboro | Parsippany | naihanson.com | Member of NAI Global with 325+ Offices Worldwide

SERVICES OFFERED

Brokerage • Property Management • Corporate Services • Financing • Logistics • Government Services • Healthcare • Tenant Representation • Cold Storage • Investment Services

The information contained herein has been obtained from sources considered to be reliable, but no guarantee of its accuracy is made by NAI James E. Hanson

1

Madison Street East Rutherford, New Jersey

PROPERTY SUMMARY



Property Description

Great Industrial/Flex space outside NJ Meadowlands commission.

Location Description

Near Route 21 with convenient access to all major highways.

Demographics 1 Mile 3 Miles 5 Miles

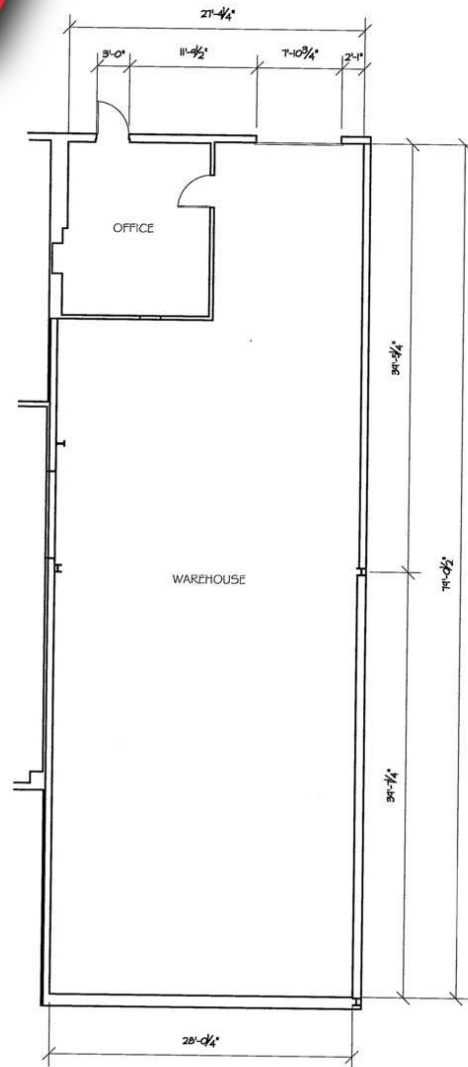
Total Households	14,905	100,457	218,445
Total Population	40,468	272,238	580,390
Average HH Income	\$82,996	\$91,354	\$97,293



1

Madison Street
East Rutherford, New Jersey

FLOOR PLAN



Existing Floor Plan

Scale: 1/16" = 1'-0"

1 MADISON STREET
EAST RUTHERFORD, NJ 07073

TENANT: AVAILABLE
OFFICE = 242 SQ.FT.
WAREHOUSE = 2066 SQ.FT.
TOTAL SITE = 2308 SQ.FT.