


Interstate Business Park

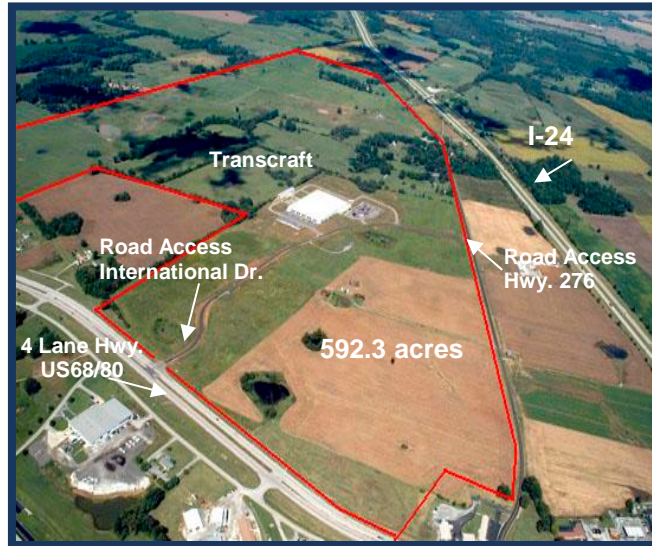
489 International Drive - Cadiz, Kentucky

(36° 52' 53.962"N 87° 44' 58.478"W)

In order to meet your project needs, Trigg County, Kentucky offers the Cadiz-Trigg County Interstate  Industrial Park consisting of 592 prime acres within one mile of I-24 and a population base of 427,269 within a 40-mile radius.

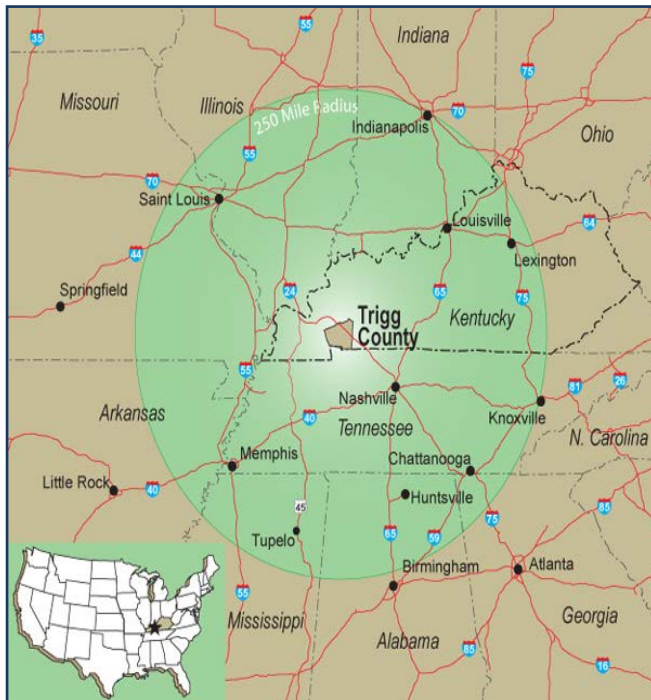
SITE ATTRIBUTES

- * 592.3 total acres
- * 120.5 acres zoned industrial & owned by Cadiz-Trigg County Industrial Foundation
- * 471.8 acres optioned by Trigg County Industrial Foundation
- * Gently rolling topography from 510' to 530'
- * 4-inch gas line to site
- * 10-inch water line to site
- * 8-inch sewer line to site
- * Three-phase underground
- * Phase 1 Environmental Report available
- * Technically skilled workforce



* **Certified "KY Work Ready Community"**

SITE ACCESS



- * Adjacent to US Hwy 68/KY Hwy 80 (four lane)
- * Within 1 mile of Interstate 24
- * 93 miles to Nashville International Airport
- * 17 miles to Eddyville Riverport
- * Population base of 427,269 within a 40-mile radius
- * Labor force base of 202,745 within a 40-mile radius
- * Within 250 miles of major markets:

Chattanooga, TN	Louisville, KY
Huntsville, AL	Memphis, TN
Indianapolis, IN	Nashville, TN
Knoxville, TN	St. Louis, MO
Lexington, KY	Tupelo, MS

- * **Part of a 289,00 MSA**
- * Within 40 miles of 2 universities and 2 community college campuses

Mark Lindsey - Executive Director

South Western Kentucky Economic Development Council

2800 Ft. Campbell Blvd.

Hopkinsville, KY 42240

270-885-1499 (or) 270-839-0310

Email: mlindsey@southwesternky.com

www.southwesternky.com

