



**3,167 SF AVAILABLE  
FOR SUBLEASE**

# **SUBLEASE @ THE REGISTRY**

14800 San Pedro Ave, San Antonio, TX 78232  
Suite 115



## **TRANSWESTERN CONTACT INFORMATION**

YESENIA SMITH  
210.563.7070 | [Yesenia.Smith@transwestern.com](mailto:Yesenia.Smith@transwestern.com)

LICIA SALINAS  
210.253.2931 | [Licia.Salinas@transwestern.com](mailto:Licia.Salinas@transwestern.com)



## FIRST FLOOR SPACE

2ND GEN PAIN MANAGEMENT CLINIC

3,167 SF

\$22.00/SF (FULL SERVICE)

EXP 2/28/2027

4 EXAM ROOMS

OPERATING ROOM

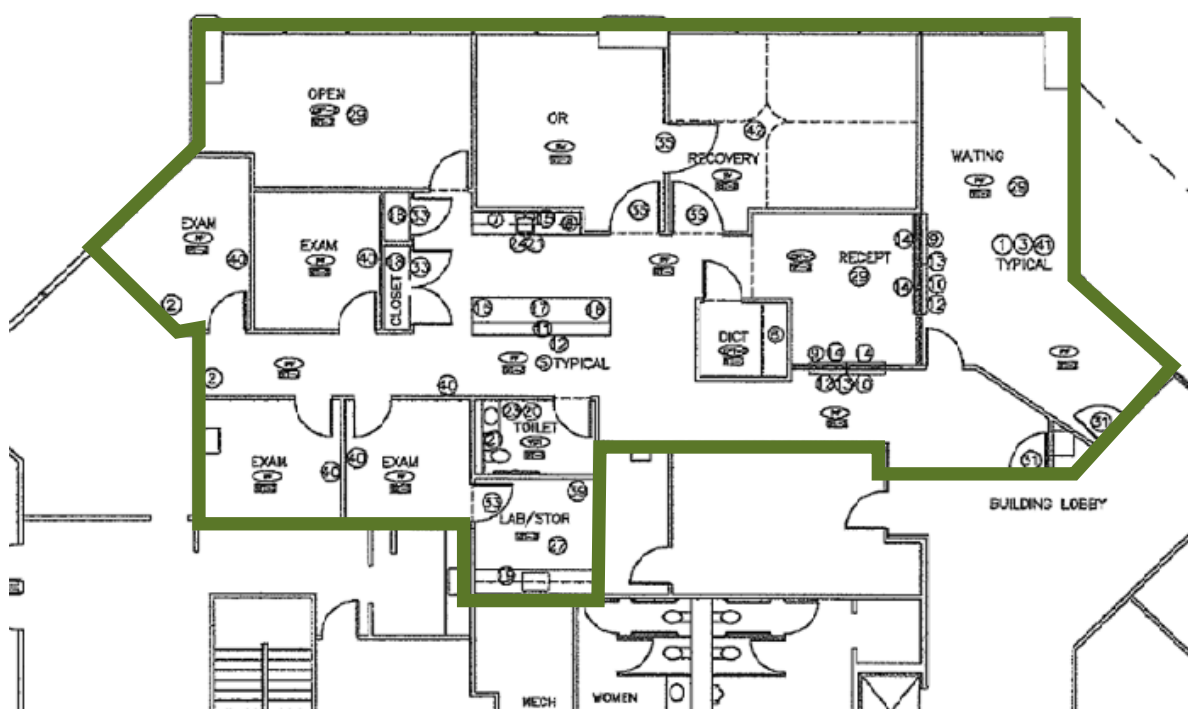
RECOVERY AREA



## TRANSWESTERN CONTACT INFORMATION

YESENIA SMITH  
210.563.7070 | [Yesenia.Smith@transwestern.com](mailto:Yesenia.Smith@transwestern.com)

LICIA SALINAS  
210.253.2931 | [Licia.Salinas@transwestern.com](mailto:Licia.Salinas@transwestern.com)



**TRANSWESTERN CONTACT INFORMATION**

YESENIA SMITH  
210.563.7070 | Yesenia.Smith@transwestern.com

LICIA SALINAS  
210.253.2931 | Licia.Salinas@transwestern.com



3,167 SF SUBLEASE  
AVAILABLE @ THE REGISTRY



**TRANSWESTERN CONTACT INFORMATION**

YESENIA SMITH  
210.563.7070 | [Yesenia.Smith@transwestern.com](mailto:Yesenia.Smith@transwestern.com)

LICIA SALINAS  
210.253.2931 | [Licia.Salinas@transwestern.com](mailto:Licia.Salinas@transwestern.com)

# SUBLEASE @ THE REGISTRY

---

14800 San Pedro Ave, San Antonio, TX 78232  
Suite 115

YESENIA SMITH

Yesenia.Smith@transwestern.com  
210.563.7070

'LICIA SALINAS

Licia.Salinas@transwestern.com  
210.253.2931

