

FOR LEASE

D102: 9,370 SF

D108: 9,248 SF

WEST PARK CORPORATE CAMPUS

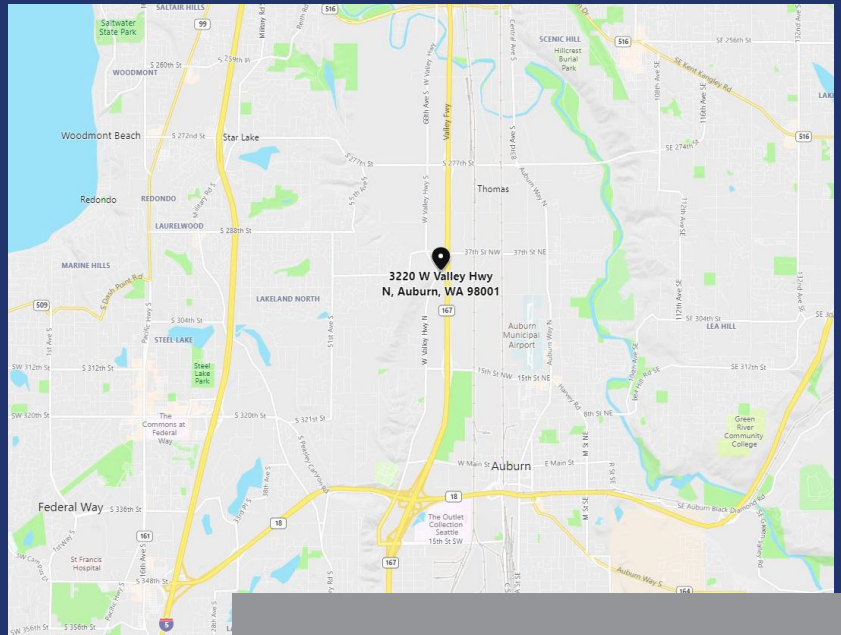
3320 W VALLEY HWY N | AUBURN, WA



DOCK HIGH WAREHOUSE/OFFICE SPACE

HIGHLIGHTS

- D102: 9,370 SF
- D108: 9,248 SF
- Dock high and grade level doors
- 3-phase power
- 30' clear height
- Excellent office layout
- Sprinklered
- Excellent highway 167 frontage
- Class A image
- Excellent access and proximity to I-5, SR-18 and Hwy-167
- Built in 2000
- **Contact brokers for rates**



EXCLUSIVELY OFFERED BY:

Arne Svendsen
(206) 947-2885
asvendsen@andoverco.com

Brian Bruininks, CCIM
(206) 336-5324
bbruininks@andoverco.com



THE ANDOVER COMPANY, INC./CORFAC INTERNATIONAL
900 SW 16th St, Ste 100 | Renton, WA 98057 | (206) 244-0770 | www.andoverco.com

West Park Corporate Campus is owned and operated by:



The information contained herein has been obtained from reliable sources, but is not guaranteed. A prospective buyer/tenant should verify each item relating to this property and all information contained herein.

FOR LEASE

D102: 9,370 SF

D108: 9,248 SF

WEST PARK CORPORATE CAMPUS

3320 W VALLEY HWY N | AUBURN, WA



ADDRESSES

- Building **A**: 1220 37th St NW
- Building **B**: 3500 W Valley Hwy N
- Building **C**: 3402 W Valley Hwy N
- Building **D**: 3320 W Valley Hwy N

EXCLUSIVELY OFFERED BY:

Arne Svendsen
(206) 947-2885
asvendsen@andoverco.com

Brian Bruininks, CCIM
(206) 336-5324
bbruininks@andoverco.com

West Park Corporate Campus is owned and operated by:

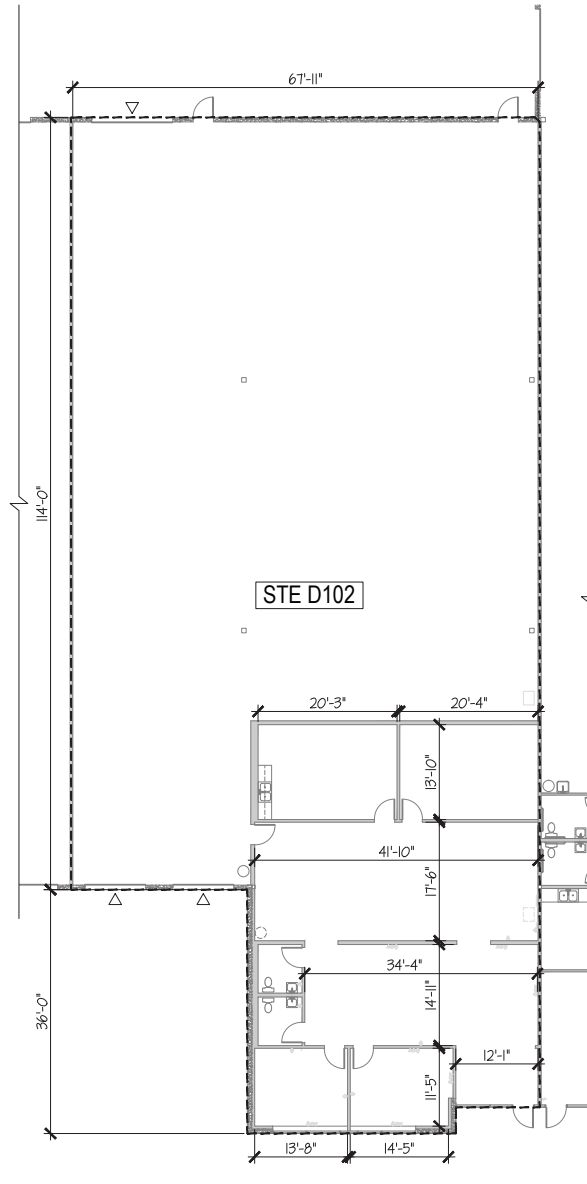


FOR LEASE
D102: 9,370 SF

WEST PARK CORPORATE CAMPUS
3320 W VALLEY HWY N | AUBURN, WA

FEATURES

- Includes 2,568 SF office
- 1 dock high door, 2 oversized grade level doors
- 3-phase power
- 30' clear height
- Excellent office layout
- Sprinklered
- Excellent highway 167 frontage
- Class A image
- Excellent access and proximity to I-5, SR-18 and Hwy-167
- Built in 2000
- Available Now
- **Contact brokers for rates**



EXCLUSIVELY OFFERED BY:

Arne Svendsen
(206) 947-2885
asvendsen@andoverco.com

Brian Bruininks, CCIM
(206) 336-5324
bbruininks@andoverco.com

West Park Corporate Campus is owned and operated by:

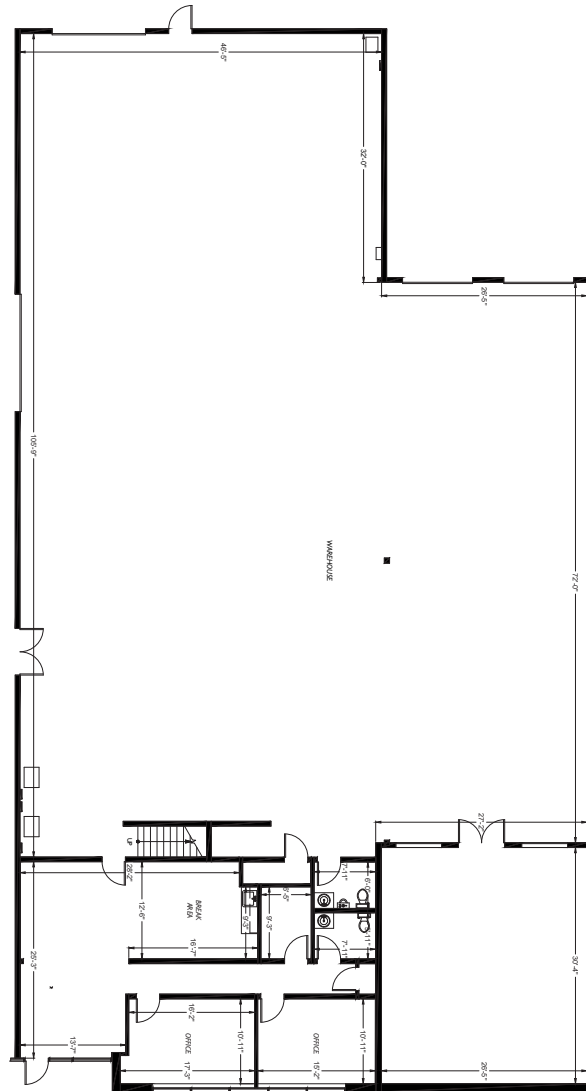


FOR LEASE
D108: 9,248 SF

WEST PARK CORPORATE CAMPUS
3320 W VALLEY HWY N | AUBURN, WA

FEATURES

- Includes 1,414 SF office and 1,515 SF bonus storage mezz.
- 2 dock high doors, 1 grade level door
- 3-phase power
- 30' clear height
- Excellent office layout
- Sprinklered
- Excellent highway 167 frontage
- Class A image
- Excellent access and proximity to I-5, SR-18 and Hwy-167
- Built in 2000
- Available 11/1/2024
- **Contact brokers for rates**



EXCLUSIVELY OFFERED BY:

Arne Svendsen
(206) 947-2885
asvendsen@andoverco.com

Brian Bruininks, CCIM
(206) 336-5324
bbruininks@andoverco.com

West Park Corporate Campus is owned and operated

