



# COLLEYVILLE SQUARE

6201 Colleyville Blvd & 6201 Hwy 26 | Colleyville, TX 76034

**OFFICE/MEDICAL**  
AVAILABLE FOR LEASE

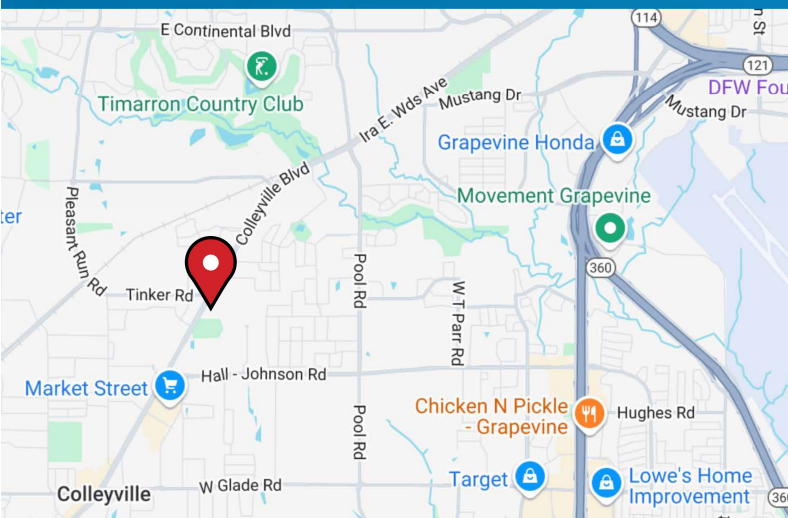


## PROPERTY SUMMARY

Building Type	Medical
Year Built	1999
Floors	1 Story
Building Size	±13,160 SF
Building Class	B
Parking	67 Surface Spaces

## HIGHLIGHTS

- Monument signage off of a busy six-lane highway in an affluent area - easy access to downtown Colleyville, Grapevine, and Southlake
- Elegant porticos with cupola features!
- CC-2 Zoning allows for many potential usages including medical, professional office, retail, or restaurant!
- Owner will built-to-suit so that you receive a freshly remodeled space with beautiful finish out!



**Ian D. Ghrist**  
(817)778-4136  
ghristlaw.com





# SUITE 150

Size ±2,804 Sf  
Lease Rate \$23.99/SF/YR  
Floor 1st  
Space Use Office  
Condition Full Build-Out  
Available ±60 Days

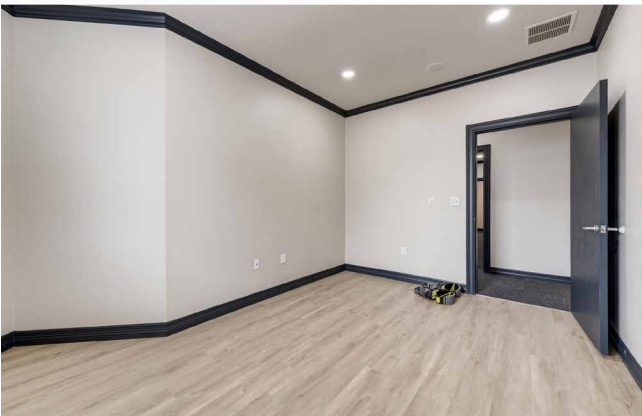
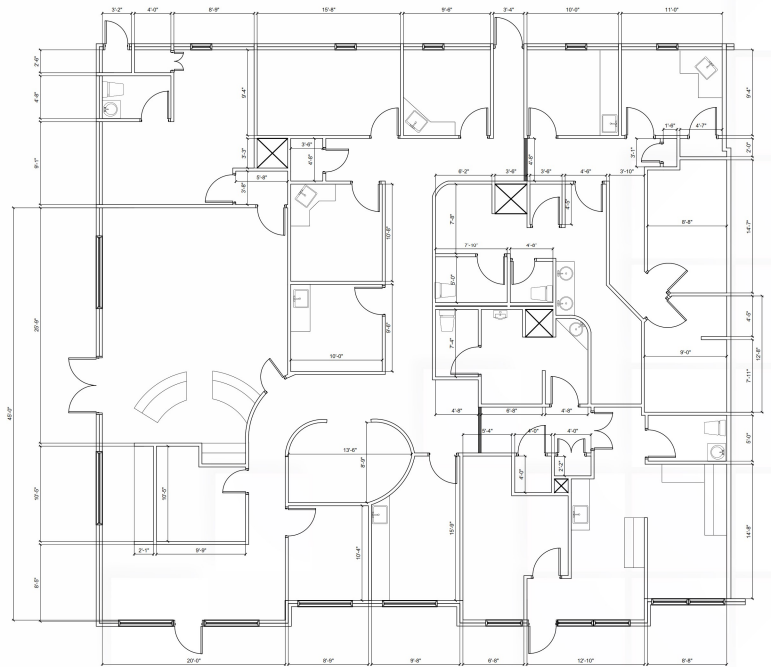
# SUITE 200

Size ±4,677 Sf  
Lease Rate \$23.99/SF/YR  
Floor 1st  
Space Use Medical  
Condition Full Build-Out  
Available ±60 Days



SUITE 150

SUITE 200



\*Interior photos are not from this building, they are samples of the post-renovation flooring, paint, and trim that the building will have when remodeling has been completed.



Ian D. Christ  
(817)778-4136  
ghristlaw.com

