

BRAND NEW **BUILDING UPGRADES**

2300 CROWN COLONY DRIVE

Quincy, Massachusetts

OFFICE SPACE

2,736 - 19,429 SF Available



2300 CROWN COLONY DRIVE

Quincy, Massachusetts



PROPERTY SPECIFICATIONS

BUILDING SIZE: 45,120 SF

PROPERTY TYPE: Class A Office

FLOORS: 3

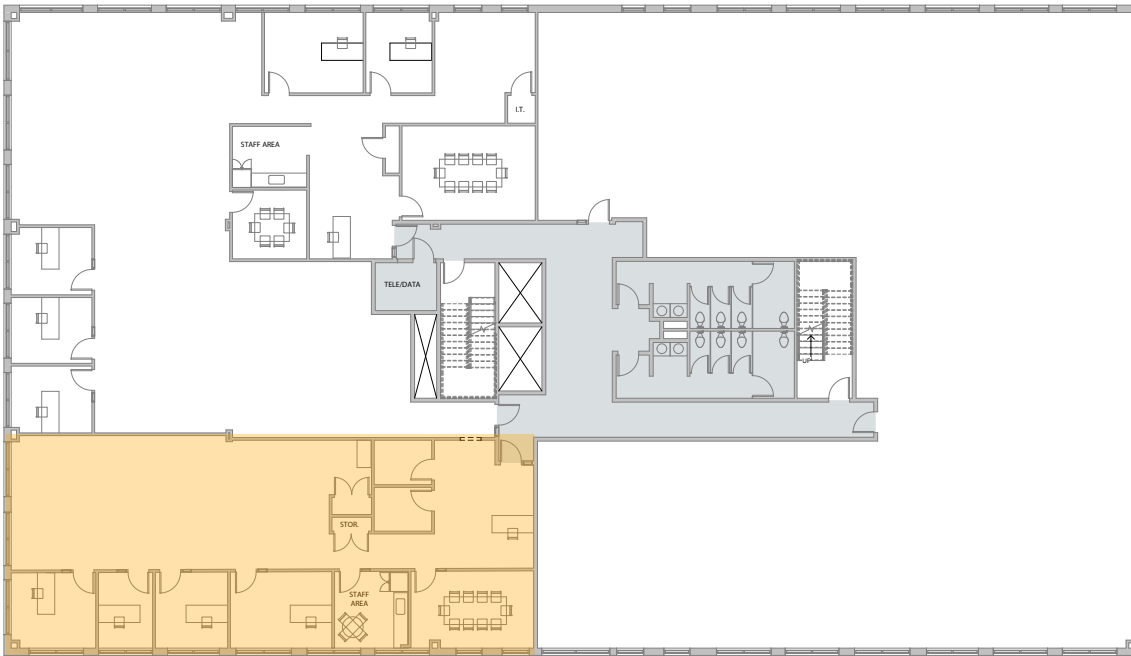
AVAILABLE SF: **Floor 2:** 2,736 SF
Floor 3: 16,693 SF (subdividable)

YEAR BUILT: 1999

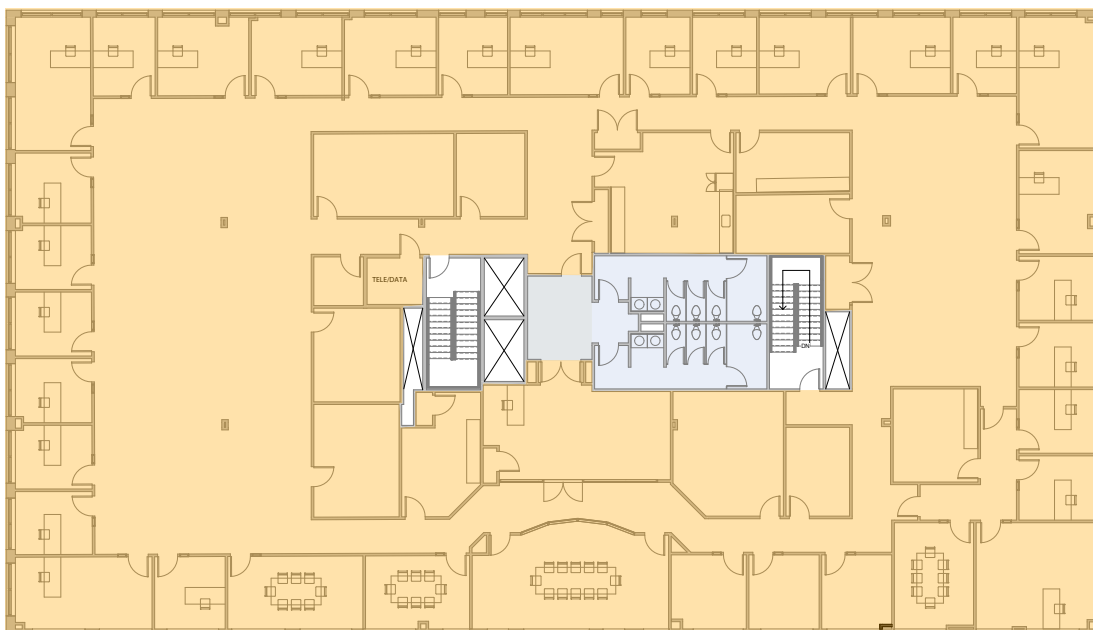
PARKING RATIO: 3.40/1,000 SF

LOCATION: Surrounded by Downtown Boston and Cambridge. Strategically located at the intersection of Route 3 and Interstates 93 and 95, the Property offers tremendous transportation options along the regions most traveled highways. Additionally, the Property is located less than a mile away from the Quincy Adams station, offering unparalleled transit access via the MBTA Red Line.

FLOOR 2: 2,736 SF



FLOOR 3: 16,693 SF (SUBDIVIDABLE)



FOR LEASE **OFFICE SPACE**

2300 CROWN COLONY DRIVE

Quincy, Massachusetts

2,736 - 19,429 SF Available



CONTACT US TO ARRANGE A TOUR

NED HALLORAN

Executive Vice President

617.457.3372

nhalloran@hunnemanre.com

LEEANNE RIZZO

Executive Vice President

617.457.3371

lrizzo@hunnemanre.com

@2025 Hunneman. All rights reserved. All information has been obtained from sources believed reliable but no warranty or representation is verified for accuracy or completeness. Caution and independent investigation of property and information should be verified. Reliance on this information is at your own risk.



303 Congress Street, Boston, MA 02210 617.457.3400 www.hunnemanre.com