

1 Branch Street

Methuen, MA



17,000 Sq. Ft.
First Class
Office/Medical

Located in the Merrimack Valley, One Branch Street is a two story, architectural block, structural steel building offering 17,000 sq. ft. of first class office/medical space.

This attractive masonry facade with walls of glass has pleasant views of the beautifully matured landscape.

This exceptionally maintained building has great access and visibility to Interstate 93 North and South at Exit #46.

Just 30 minutes to Boston and only 20 minutes to Manchester.

For further information, please call our main office or visit our website:

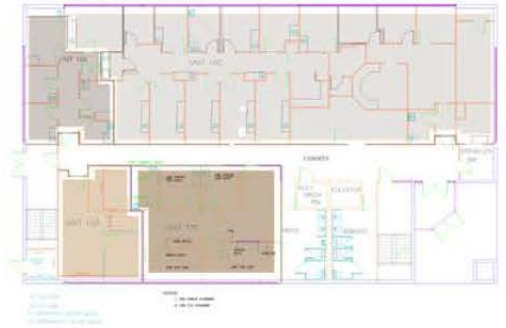
(603) 894-1104
www.BrooksProperties.com



Building Specifications

Land:	1.47 acres
Zoning:	Business Highway
Building Size:	17,000 square feet
Year Built:	1985
Type:	Two Story, Structural Steel, Architectural Blc
Parking:	41 spaces
Ceiling Height:	9'
Sprinkled:	Yes
Electrical Service:	400 A (300KVA Trans)
HVAC:	Gas Fired Rooftop Units, Fully A/C
Type Fuel:	Gas
Utilities:	Municipal Water/Sewer

1st Floor Plan



2nd Floor Plan



Building Location



9 Red Roof Lane
Salem, NH 03079
(603) 894-1104

www.BrooksProperties.com