

RETAIL/OFFICE | **FOR LEASE**



# 1600 Heritage Landing St. Charles, MO 63303

Joi Niedner • 314.304.4900  
joi@mckelveyproperties.com

**150-8,640 SF AVAILABLE FOR LEASE**







# FOR LEASE

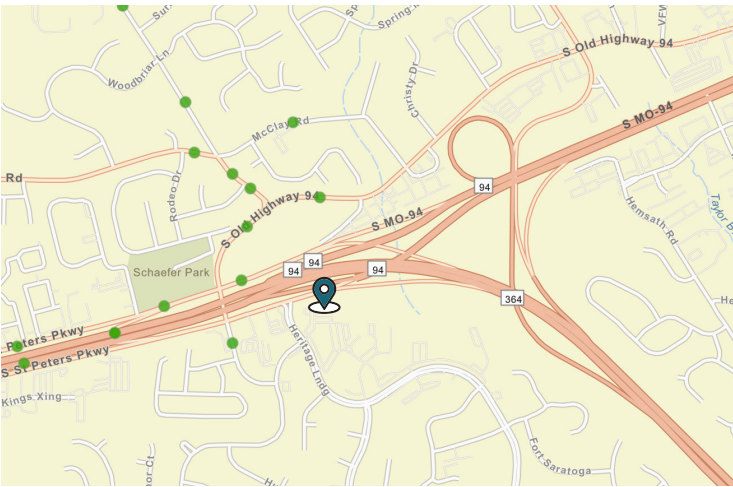
1600 Heritage Landing  
St. Charles, MO 63303



**McKELVEY  
PROPERTIES**  
building relationships . creating wealth

**UNDER NEW OWNERSHIP!**

**\$16-\$17/SF FULL SERVICE 150-8,640SF**  
**PRE- CONSTRUCTION SPECIAL! OFFERING FREE RENT!**



Rehab of the exterior, interior, and lobby.  
New parking lot recently completed.

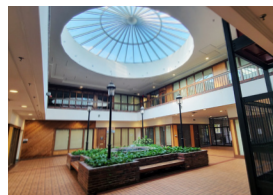
70,000 Cars per day off of Hwy 94. Convenient location between Page (Hwy 364) and Hwy 94.

Popular entrance to Centennial Greenway. Next to the Heritage Museum.

Suites available between 150-8,640 SF.

Lovely window lines across all offices with impressive window in lobby area.

Year built: 1980 Lot Size: 3.48 Acres  
Taxes (2023): \$30,553.76



**CONTACT:** Joi Niedner • 314.304.4900  
joi@mckelveyproperties.com **MP**

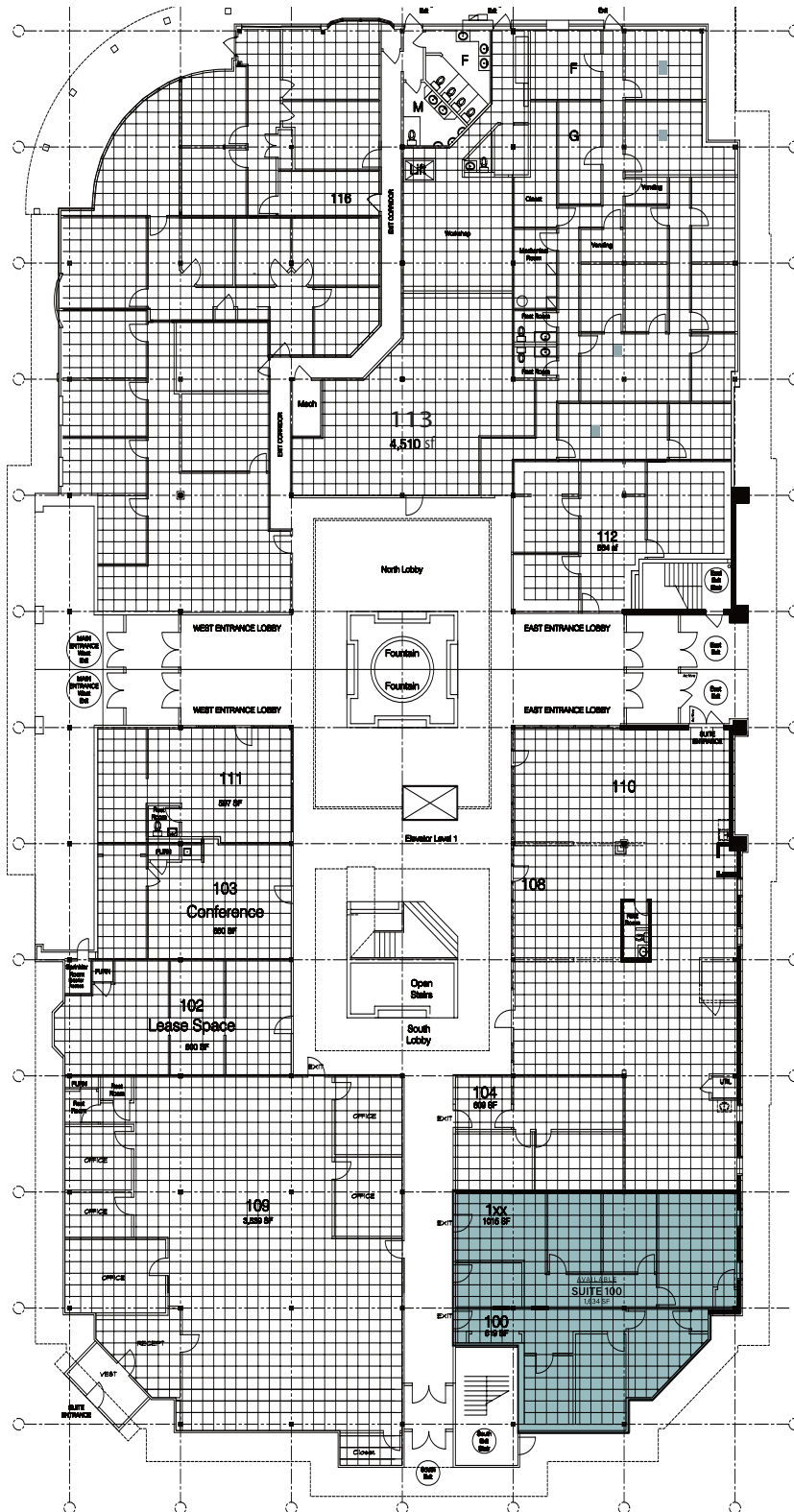
# FLOOR PLAN - MAIN FLOOR



**McKELVEY  
PROPERTIES**  
building relationships . creating wealth

**AVAILABLE**

100: 1,635 SF



**JUST LEASED**

- 101-103: Pop! Arts Center
- 109: SHARE National
- 111: WorkSafe Technologies
- 112 B: Be By Baby
- 112 C+D: GFS Group
- 112: Lending Precious Hands
- 113: Allstate Heritage Ins.
- 115: Holistic Healing
- 117: The Nest Holistic

**CONTACT:** Joi Niedner • 314.304.4900  
joi@mcKelveyproperties.com

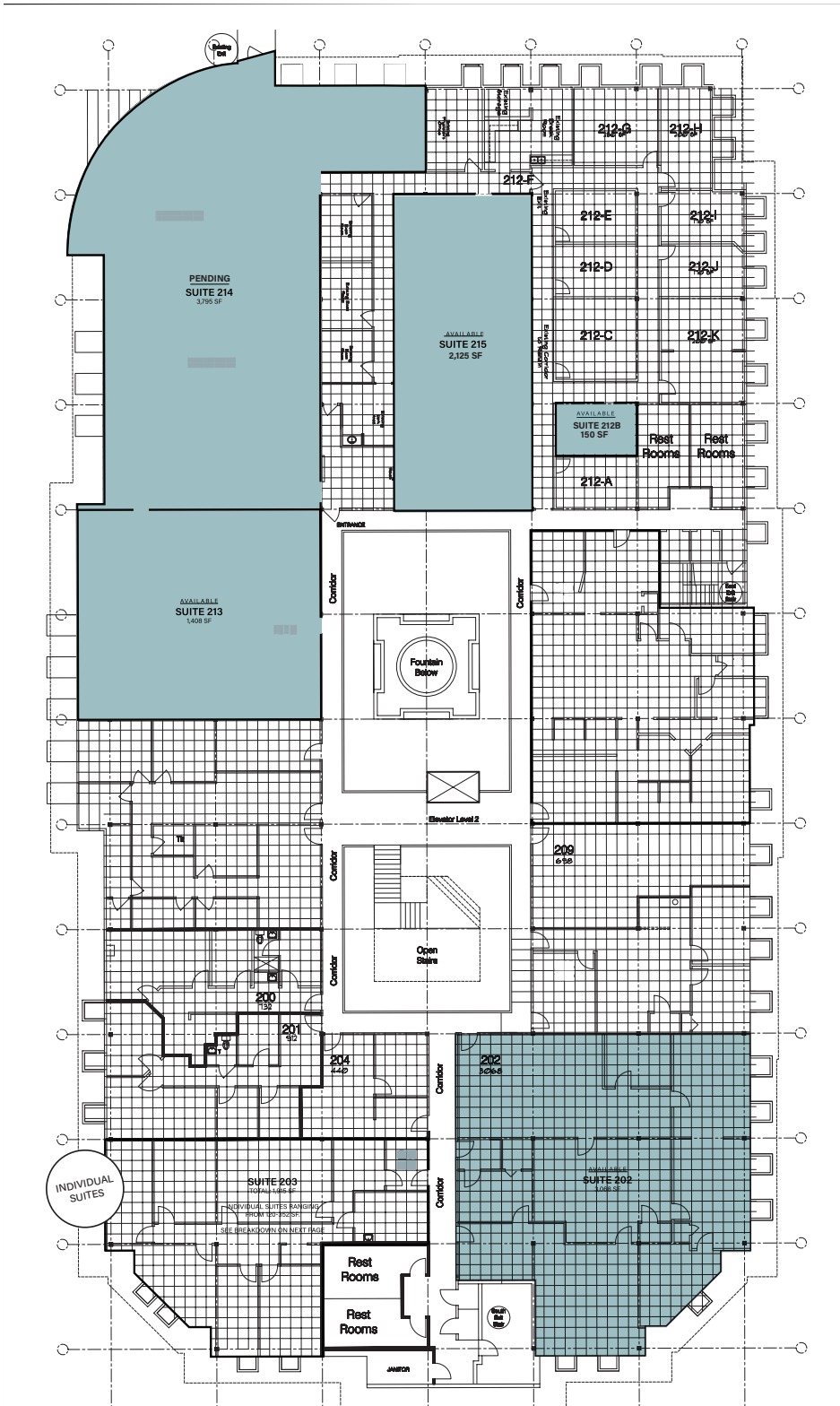




# FLOOR PLAN - SECOND FLOOR



**McKELVEY  
PROPERTIES**  
building relationships . creating wealth



## AVAILABLE

- 202: 3,068 SF - Will Divide
- 210: 2,130 SF
- 212B: 150 SF - \$250/month
- 213: 1,408 SF  
W/2 back offices
- 213: 1,228 SF  
W/ 1 back office
- 215: 2,125 SF

## JUST LEASED

- 201: Flourishing Kids  
Therapy & Lactation
- 203: Wellness Way  
Chiropractors
- 207 A: Integrated Vitality
- 207 B: Jennifer Ostmann &  
Keri Tremple
- 207 C: Eclipsed Insights
- 208 A: Therapist
- 208 D/C: RaeLax Massage
- 209: St. Charles County  
Business Record
- 210: True Grace Church
- 212 I: Ethio Dash
- 214: Pending

**CONTACT:** Joi Niedner • 314.304.4900  
joi@mckelveyproperties.com MP





## FOR LEASE

1600 Heritage Landing  
St. Charles, MO 63303



**McKELVEY  
PROPERTIES**  
building relationships . creating wealth

## FLOOR PLAN BREAKDOWN: SUITE 215



**CONTACT:** Joi Niedner • 314.304.4900  
joi@mckelveyproperties.com

**MP**



# FOR LEASE

1600 Heritage Landing  
St. Charles, MO 63303



**McKELVEY  
PROPERTIES**  
building relationships . creating wealth

FEATURED  
SUITE!

## SUITE 213 AVAILABLE FOR LEASE: 1,228 SF



213+214  
HIGHLIGHTED

**CONTACT:** Joi Niedner • 314.304.4900  
joi@mcKelveyproperties.com **MP**

McKelvey Properties | 17280 N Outer 40 Rd, Suite 201 | Chesterfield, MO 63005 | 636.669.9111 | www.McKelveyProperties.com  
No expressed or implied warranty or representation is made as to the accuracy of the information contained herein. This property is submitted subject to errors, omissions, change of price, withdrawal without notice, prior lease or sale and any other listing conditions imposed by the principals.





**FOR LEASE**

1600 Heritage Landing  
St. Charles, MO 63303



**McKELVEY  
PROPERTIES**  
building relationships . creating wealth

## NEARBY HERITAGE LANDING: CENTENNIAL GREENWAY

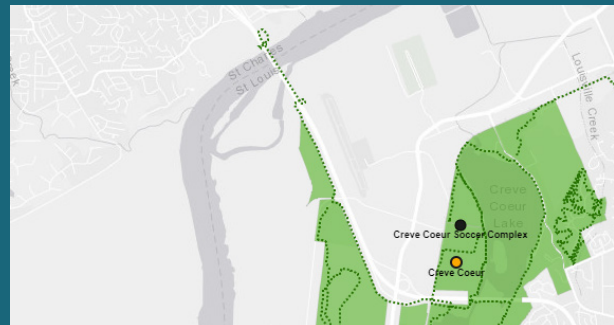


This segment of the Centennial Greenway stretches from the Katy Trail near the Page Avenue extension to the Heritage Museum in St. Charles County. There is also a .7 mile extension over Highways 364 and 94 so people can safely walk or ride a bike across these busy highways; connecting schools, neighborhoods,

parks, and businesses to each other as well as other area attractions. They also connect the existing trail system to Wapelhorst Park in the City of St. Charles and Laurel Park in St. Peters.

This greenway offers a direct connection to the paved Creve Coeur Connector trail that takes you across the Missouri River and links up with the paved trails and other attractions in Creve Coeur County Park. You can use the Katy Trail to travel to Historic Downtown St. Charles and Frontier Park. You can also exit the KATY Trail at Olive Street and ride on the street to connect to the Boschert Greenway!

INFORMATION FROM: <https://greatriversgreenway.org>



Money Magazine's  
**#13 BEST Place to  
Live in Missouri**

**CONTACT:** Joi Niedner • 314.304.4900  
joi@mckelveyproperties.com

**MP**



PROPERTY DETAILS	WOULD BE PERFECT FOR	TRAFFIC COUNT	BUILDING TENANTS
<p>Lovely window lines across all units.</p> <p>Rehabbed exterior, interior, and lobby.</p> <p>Newly sealed parking lot under construction.</p>	<p>Insurance Office</p> <p>Massage Therapist</p> <p>Chiropractor</p> <p>Personal Office Space</p> <p>CPA</p> <p>Financial Advisor</p> <p>Attorney Office Space</p>	<p>54,341 VPD within 1 mile.</p> <p>114,371 VPD within 3 miles.</p>	<p>You've Got Maids</p> <p>Assets Protection</p> <p>Red Realty</p> <p>Collaborative Counselors</p> <p>State Farm</p> <p>PoP ! Arts Center</p> <p>SHARE National</p> <p>RaeLax Massage and more</p>

DEMOGRAPHICS	1 MILE	3 MILES	5 MILES
POPULATION	11,597	84,289	160,400
HOUSEHOLDS	5,046	35,402	65,861
MEDIAN INCOME	\$99,607	\$86,102	\$84,717

**CONTACT:** Joi Niedner • 314.304.4900  
 joi@mckelveyproperties.com **MP**

McKelvey Properties | 17280 N Outer 40 Rd, Suite 201 | Chesterfield, MO 63005 | 636.669.9111 | www.McKelveyProperties.com  
 No expressed or implied warranty or representation is made as to the accuracy of the information contained herein. This property is submitted subject to errors, omissions, change of price, withdrawal without notice, prior lease or sale and any other listing conditions imposed by the principals.