

FOR LEASE

FLEX WAREHOUSE SPACE



1,914 to 3,478 Sq Ft - 448 N 1750 W Unit 2, Springville UT 84663

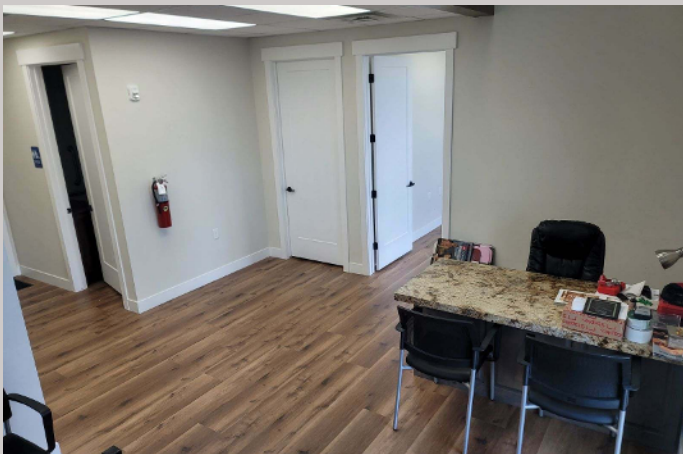
CORE **UTAH**
REAL ESTATE

www.coreutah.com

PROPERTY HIGHLIGHTS

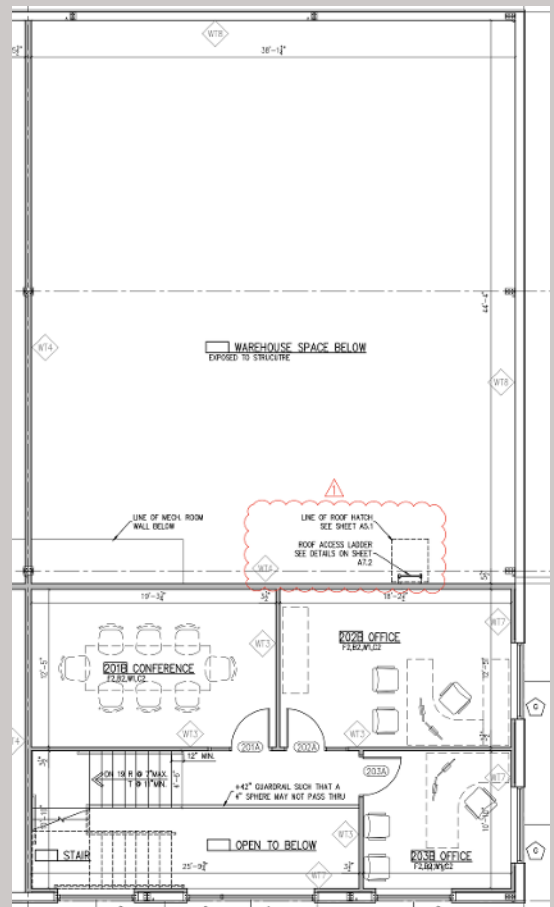
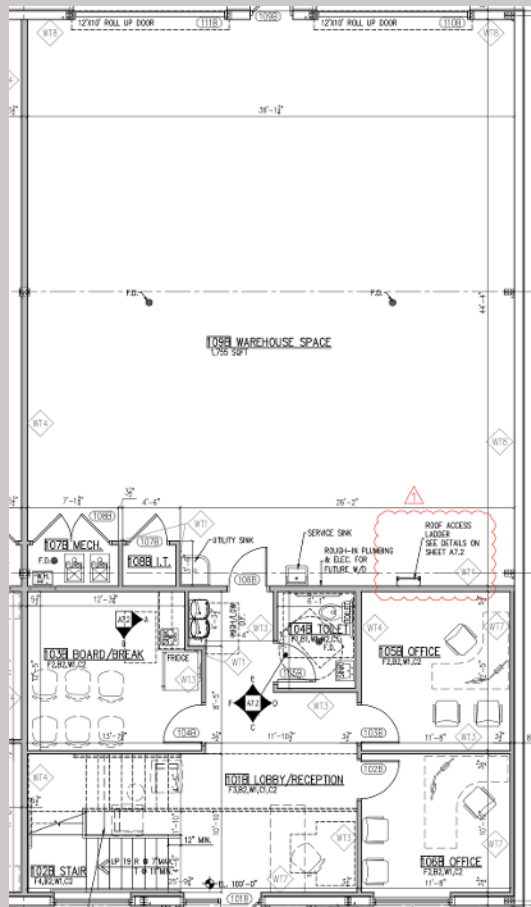
- Warehouse space for lease
- \$1.10 NNN Rate
- 1,914 to 3,478 SqFt
- (Warehouse 1,755 SqFt, Main Level office 987 SqFt, Second Floor office 736 SqFt) - Owner willing to (1) Lease entire space to tenant (2) Lease main floor office and warehouse (2,669 SqFt) or (3) lease main office and share warehouse - tenant taking 1,000 SqFt of warehouse - for a total of 1,914 SqFt.
- 2 Ground-level Doors
- Excellent Freeway Access
- 8 Parking Stalls (If lease entire space)
- Built in 2021

PROPERTY PHOTOS





FLOORPLANS



SITE OVERVIEW





**448 N 1750 W Unit 2
Springville UT 84663**

Aaron Cook, MBA

Principal Owner

801-787-7255

aaron@coreutah.com

Kevin Ford, MBA

President Sales & Leasing

801-473-6519

kevin@coreutah.com

All Rights Reserved. The information contained herein has been carefully compiled from sources considered reliable; however, we make no guarantee, warranty, or representation of its accuracy. You and your tax and legal advisors should conduct your own investigation of the property and transaction.

CORE UTAH
REAL ESTATE