



FOR SUBLEASE

DOLE CANNERY

WAREHOUSE +
CLIMATE CONTROLLED
STORAGE

PRESENTED BY





DOLE CANNERY SUBLEASE

Minutes from downtown Honolulu, the yellow buildings of Dole Cannery today serve as a 700,000+ square foot office, warehouse and retail complex that includes the Regal Dole Cannery Theaters, a state-of-the-art 18-plex, plus the adjacent Home Depot, Best Buy and Costco stores.

Address	680 Iwilei Road Honolulu, HI 96817	Sublease	Full Service Gross <i>Utilities separately metered</i>
Size	1st floor - 36,466 SF <i>with approx. 48,000 SF yard</i> 3rd floor – 38,000 SF	Gross Rent	\$1.50 / SF / Mo.
		Availability	Q1 2024
		Expires	March 31, 2026

SEAN TADAKI (PB) CCIM SIOR · *Managing Partner* · RB 21112 · 808-779-9699 · stadaki@caahawaii.com  

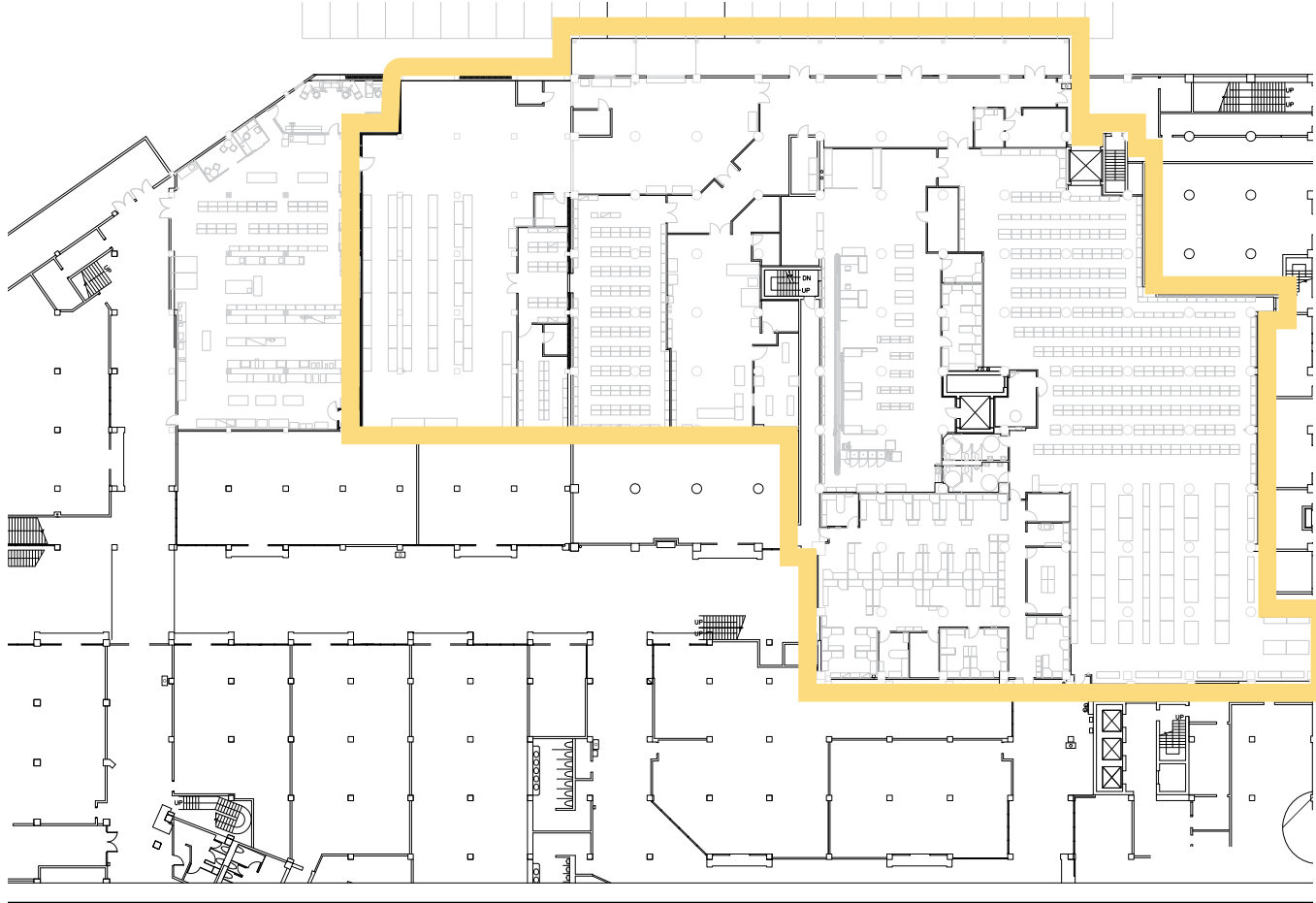
©2022 Commercial Asset Advisors. All information contained herein is obtained from sources deemed reliable. However, no representations or guarantees are made as to the accuracy thereof, and it is provided herein subject to errors, omissions, changes and withdrawals without notice. Offeror and/or his agent should confirm this information prior to making any offer. Buyer agrees that all negotiation shall be conducted through CAA only. No subagency is offered or intended.

CAAHAWAII.COM • 745 FORT STREET, SUITE 1420 • HONOLULU, HI 96813 • @WHEREHAWAIIWORKS



COMMERCIAL ASSET
ADVISORS

DOLE CANNERY FLOOR 1 • 36,466 SF WITH APPROX. 48,000 SF YARD



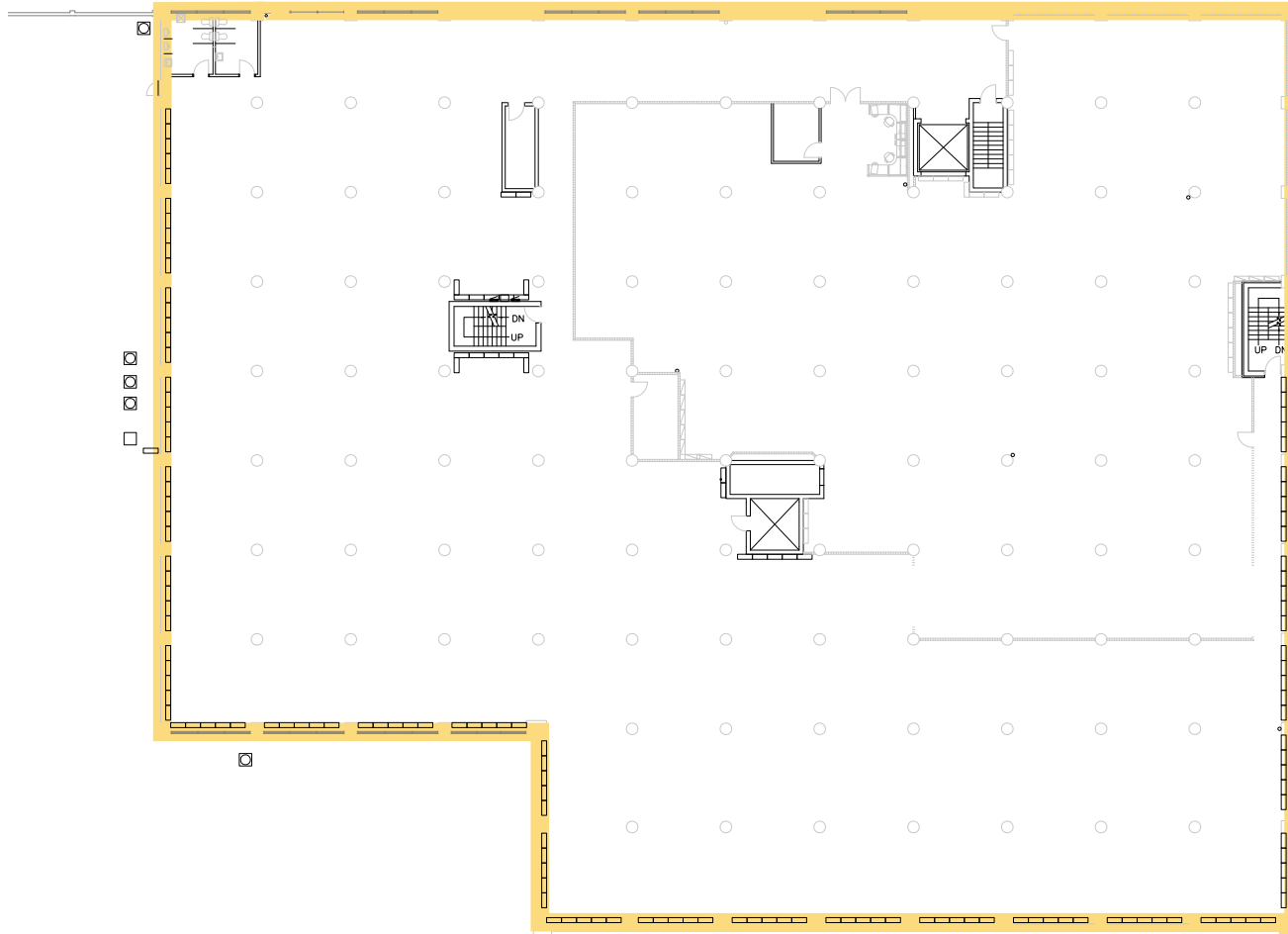
SEAN TADAKI (PB) CCIM SIOR · Managing Partner · RB 21112 · 808-779-9699 · stadaki@caahawaii.com  

©2022 Commercial Asset Advisors. All information contained herein is obtained from sources deemed reliable. However, no representations or guarantees are made as to the accuracy thereof, and it is provided herein subject to errors, omissions, changes and withdrawals without notice. Offeror and/or his agent should confirm this information prior to making any offer. Buyer agrees that all negotiation shall be conducted through CAA only. No subagency is offered or intended.

CAAHAWAII.COM • 745 FORT STREET, SUITE 1420 • HONOLULU, HI 96813 • @WHEREHAWAIIWORKS

 COMMERCIAL ASSET
ADVISORS

DOLE CANNERY FLOOR 3 • 38,000 SF



SEAN TADAKI (PB) CCIM SIOR • Managing Partner • RB 21112 • 808-779-9699 • stadaki@caahawaii.com 

©2022 Commercial Asset Advisors. All information contained herein is obtained from sources deemed reliable. However, no representations or guarantees are made as to the accuracy thereof, and it is provided herein subject to errors, omissions, changes and withdrawals without notice. Offeror and/or his agent should confirm this information prior to making any offer. Buyer agrees that all negotiation shall be conducted through CAA only. No subagency is offered or intended.

CAAHAWAII.COM • 745 FORT STREET, SUITE 1420 • HONOLULU, HI 96813 • @WHEREHAWAIIWORKS

 COMMERCIAL ASSET
ADVISORS