



## Excellent office space for a law firm, or a medical practice.

### Building 21 - Suite 300 | 1,920 SF

- Excellent layout with multiple offices and private restrooms
- 24/7 control of HVAC
- Beautifully landscaped, park-like setting
- Easy access to I-75, I-285 and Windy Hill Road
- Close proximity to Truist Park Park and abundant area amenities



24 Hour access and security systems



On-site property management



Conference room



Ample parking at building entrance

### Get more information

Chris Godfrey, Principal  
404.865.3678  
chris.godfrey@avisonyoung.com

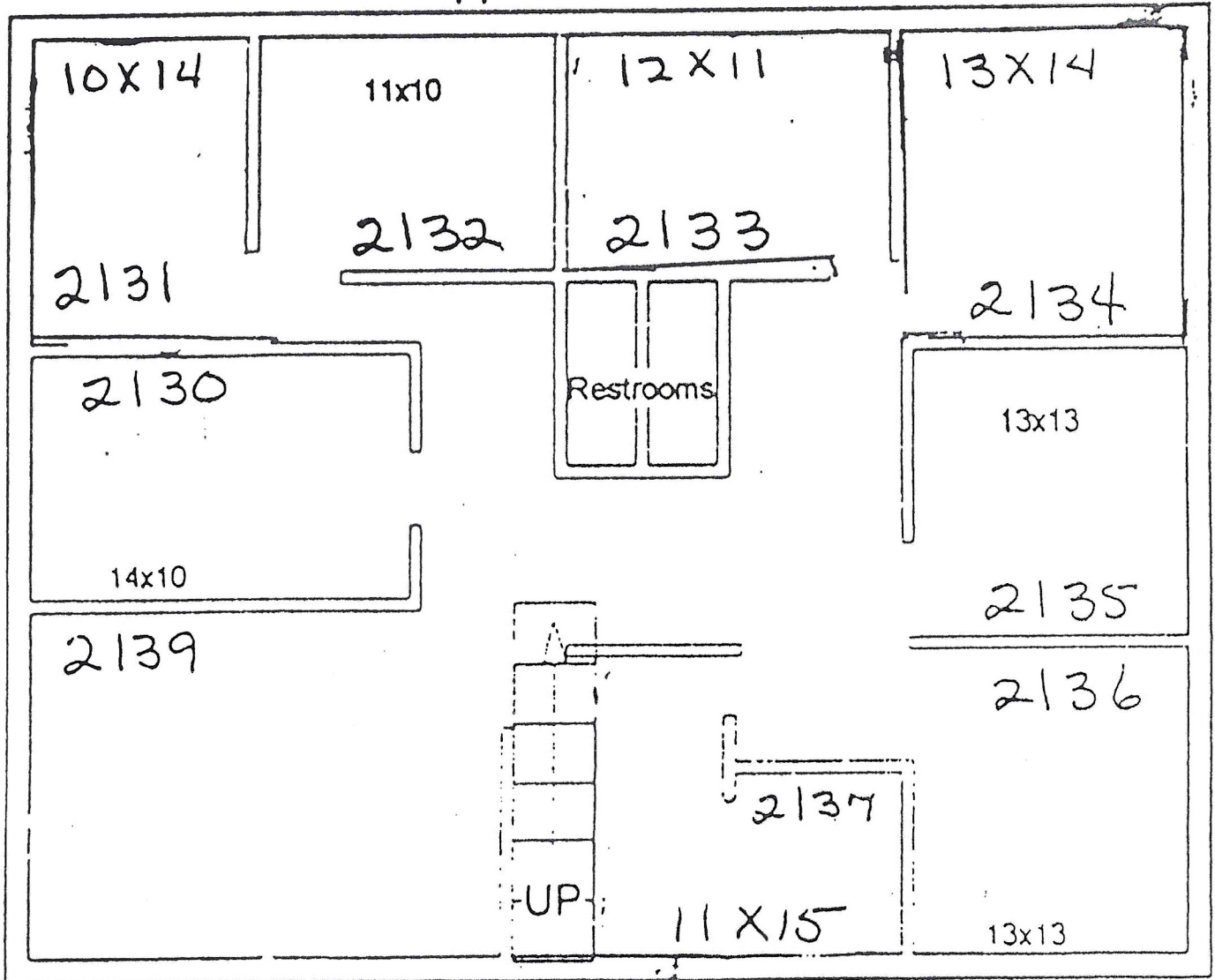
Monica Speak, Vice President  
404.454.1904  
monica.speak@avisonyoung.com

Kirk Rich, CCIM, SIOR, Principal  
770.916.6112  
kirk.rich@avisonyoung.com

**Suite 300**  
**1,920 SF**

**Governors Ridge**  
1640 Powers Ferry Road,  
Marietta, GA 30067

**Upper Level**



**Get more  
information**

Chris Godfrey, Principal  
404.865.3678  
chris.godfrey@avisonyoung.com

Monica Speak, Vice President  
404.454.1904  
monica.speak@avisonyoung.com

Kirk Rich, CCIM, SIOR, Principal  
770.916.6112  
kirk.rich@avisonyoung.com