



REPOSITIONING OPPORTUNITY

Office Building Entitled
for a 233 Unit Multifamily
Conversion, located within
an Opportunity Zone

8900
N 22nd Avenue

PHOENIX, AZ

8900
N 22nd Avenue

N 23RD AVE

W DUNLAP AVE

N 22ND AVE

REPOSITIONING
OPPORTUNITY



Successfully Rezoned
& Entitled for a 233 Unit
Multifamily Conversion



125,172 SF Three-Story
Garden Office Building,
Built in 1985 and
Renovated in 2022



Approved R-5 Zoning
(restricted commercial)
[R-5 Zoning link](#)



Located within an
Opportunity Zone

PROPERTY
VIDEO



MULTIFAMILY CONVERSION
FEATURES

Features a 100% Entitled Conversion Opportunity to Build up to a 233 Multifamily Unit Project

Zoned R-5 Multifamily Residence District – Restricted Commercial, previously IND.PK (Industrial Park)

Located near the Valley Metro Light Rail, offering easy access to downtown Phoenix, Tempe, and Mesa, with 19th Avenue and 25th Avenue & Dunlap stations within walking distance

Comprised of an ±125,172 SF Three-Story Building, located on 3.38 Acres, 5.11 Gross Acres

Excellent I-17 freeway access with a full diamond interchange on Dunlap Avenue

Multifamily Conversion Plans include preliminary plans for a total of 108 units. 38 Studios (Avg. 631 SF), 55 One-Bedrooms (Avg. 885 SF), 15 Two Bedrooms (Avg. 1,065 SF)

Opportunity Zone potentially allowing a future owner preferential tax treatment per the Department of Treasury and the IRS, if additional capital investment, development or redevelopment occur

Features a ±4.0/1,000 SF parking ratio totaling ±500 parking spaces including ±355 parking spaces in the three-level parking structure

Majority of the 2nd and 3rd floor has been taken back to open office & shell condition – allowing for a wide variety of future uses

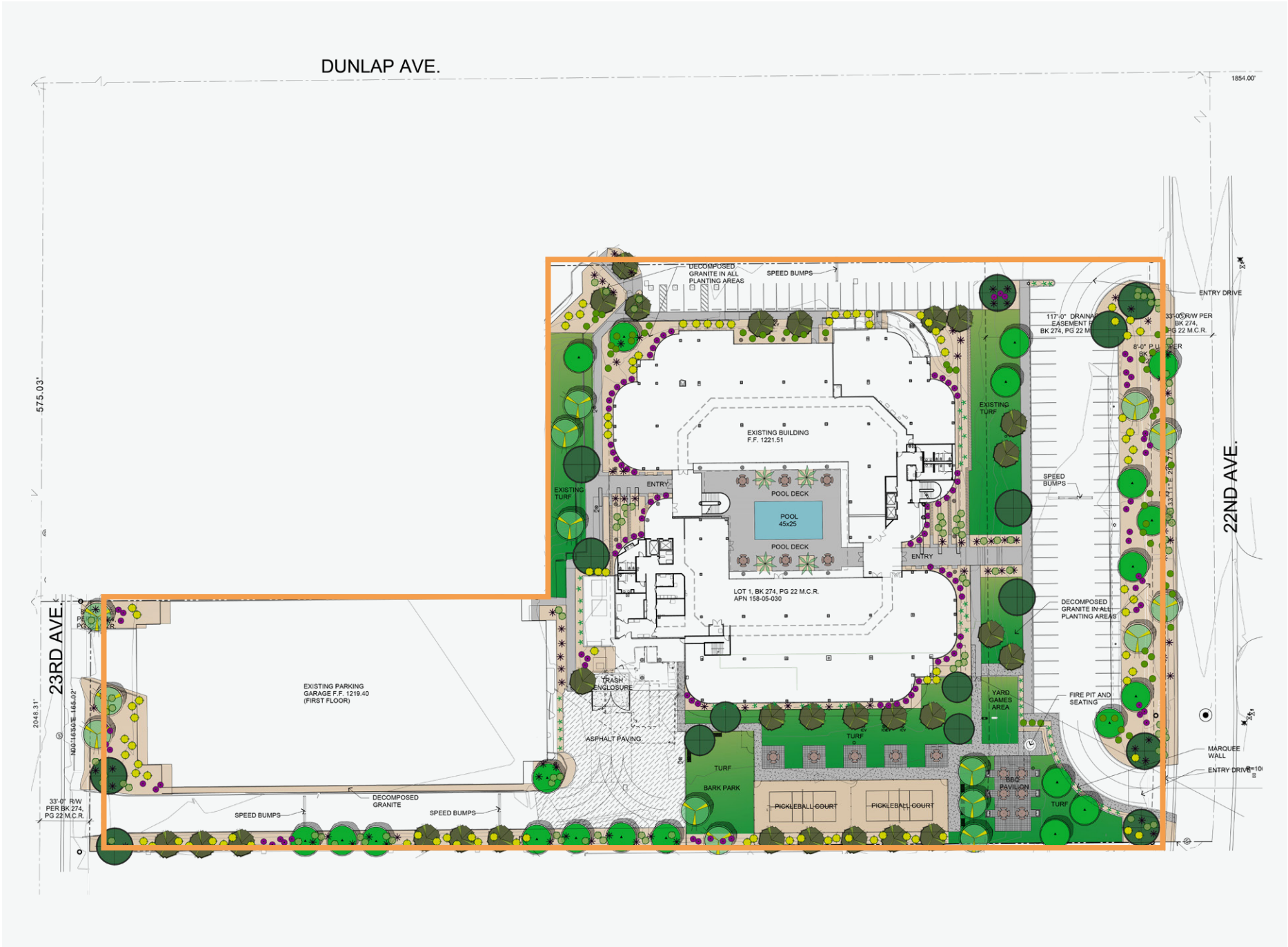


MULTIFAMILY UNIT
BREAKDOWN
REFLECTING A 108 UNIT CONVERSION

Name	Type	Net Area	Count	Total Net Area	Percent
UNIT S1	STUDIO / 1BA	562	2	1,123	
UNIT S1A	STUDIO / 1BA	631	28	17,679	
UNIT S1B ANSI	STUDIO / 1BA	631	3	1,892	
UNIT S1C	STUDIO / 1BA	695	2	1,448	22%
UNIT S2	STUDIO / 1BA	637	1	637	
UNIT S3	STUDIO / 1BA	651	2	1,302	
UNIT A1	1BED / 1BA	542	4	2,168	
UNIT A1A	1BED / 1BA	637	1	637	
UNIT A1B	1BED / 1BA	655	2	1,310	
UNIT A1C	1BED / 1BA	723	1	723	
UNIT A2	1BED / 1BA	649	3	1,948	
UNIT A3	1BED / 1BA	721	3	1,688	
UNIT A3A	1BED / 1BA	861	2	1,721	
UNIT A3B	1BED / 1BA	879	2	1,757	
UNIT A3C	1BED / 1BA	884	2	1,768	55%
UNIT A3D ANSI	1BED / 1BA	885	4	3,540	
UNIT A3E	1BED / 1.5BA	947	18	17,048	
UNIT A3F	1BED / 1.5BA	1,010	2	2,021	
UNIT A4	1BED / 1BA	817	4	3,269	
UNIT A5	1BED / 2BA	930	3	2,790	
UNIT A5A	1BED / 2BA	1,054	4	4,214	
UNIT B1	2BED / 1BA	866	2	1,733	
UNIT B2	2BED / 2BA	957	2	1,914	
UNIT B2A	2BED / 2BA	1,037	1	1,037	
UNIT B2B ANSI	2BED / 2BA	1,037	1	1,037	23%
UNIT B3	2BED / 2BA	1,135	3	3,405	
UNIT B4	2BED / 2BA	1,144	6	6,861	
Total			108	86,670	

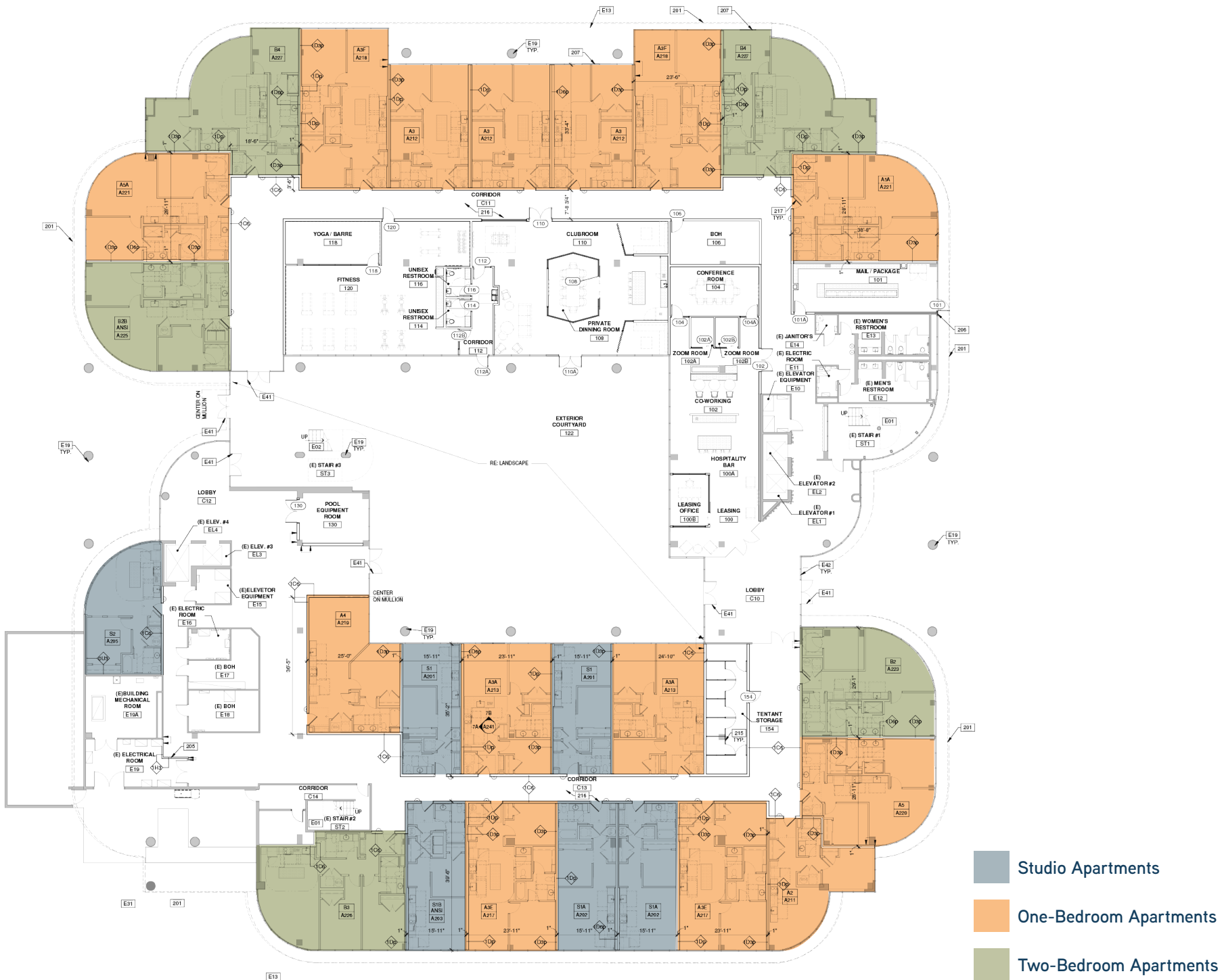
CONVERSION TO MULTIFAMILY
CONCEPT PLANS

SITE PLAN



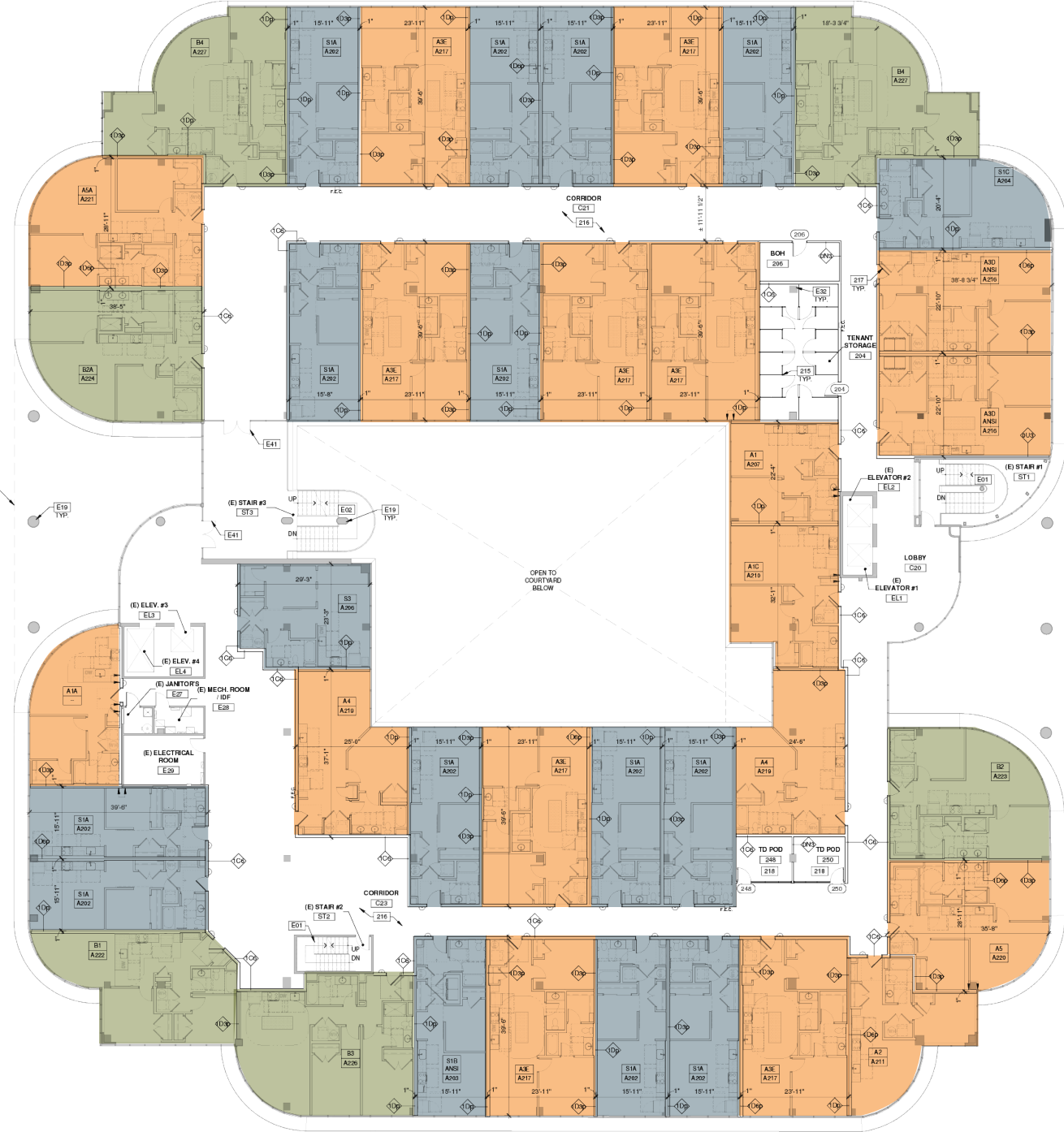
CONVERSION TO MULTIFAMILY
CONCEPT PLANS

LEVEL ONE



CONVERSION TO MULTIFAMILY
CONCEPT PLANS

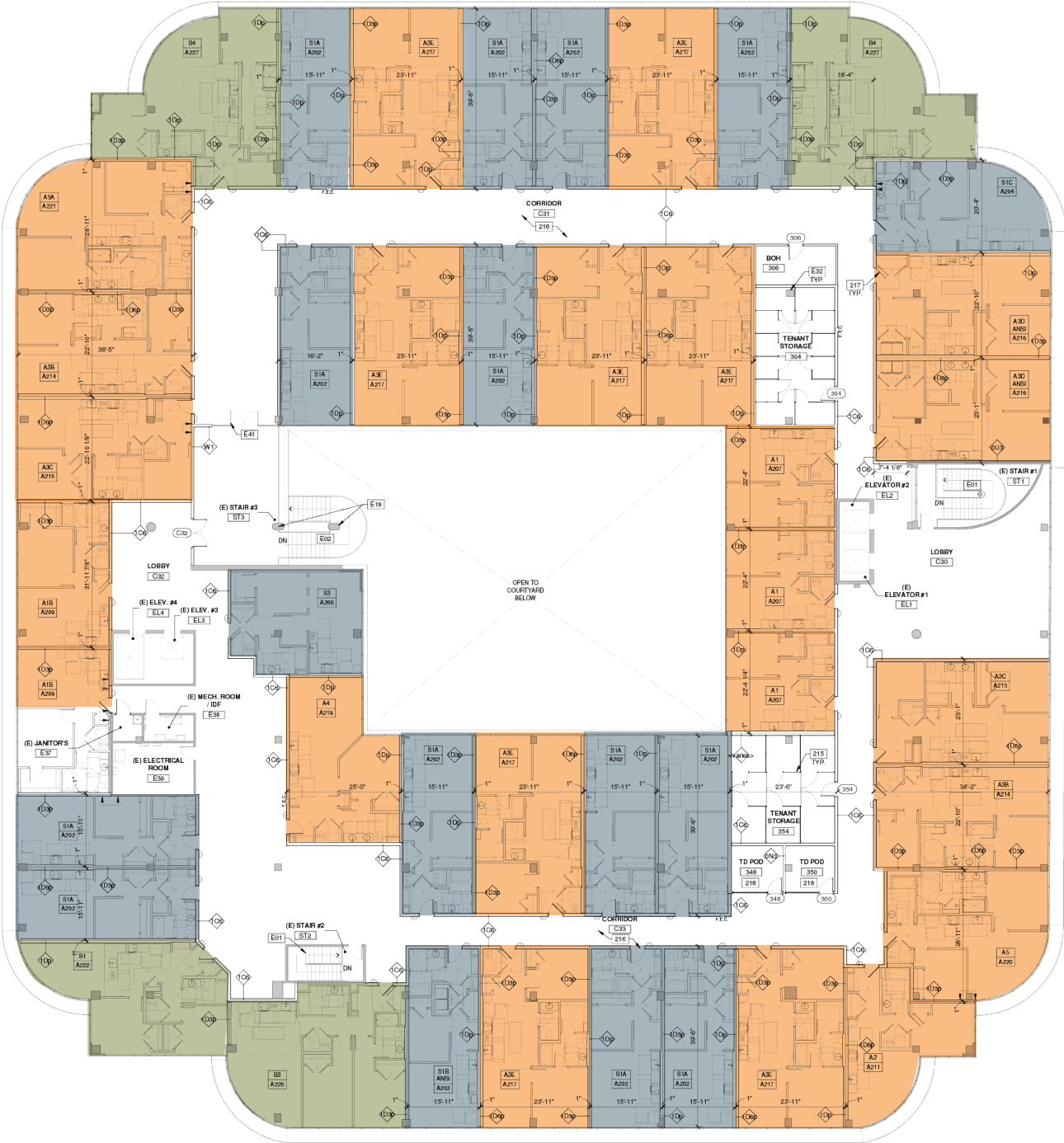
LEVEL TWO



- Studio Apartments
- One-Bedroom Apartments
- Two-Bedroom Apartments

CONVERSION TO MULTIFAMILY
CONCEPT PLANS

LEVEL THREE



- Studio Apartments
- One-Bedroom Apartments
- Two-Bedroom Apartments

LOCATION
FEATURES

- 1 mile east of the \$850 million **Metrocenter Mall redevelopment** including 2,600 multifamily units and 150k square feet of retail space
- Less than ¼ mile from the **Light Rail’s** 19th Ave & 25th Ave stop
- **High job density** with over 40k employees within a 3-mile radius boasting some of the highest employee concentrations in Phoenix
- Immediate access to the **I-17 Freeway**, 5 minutes to **Loop 101** and 8 minutes to the **I-10**
- 20 minutes from **TSMC’s** \$165 billion semiconductor fabrication facility campus
- 15 minutes from **Phoenix Sky Harbor Airport** and Downtown Phoenix
- Features **±4.00/1,000 SF Parking Ratio** totaling ±500 parking spaces including ±355 parking spaces in the garage



DEMOGRAPHICS

	1 Mile	3 Mile	5 Mile
2024 Total Population	19,120	170,617	446,002
2024 Number of Households	8,225	65,060	169,098
2024 Average Household Income	\$76,097	\$88,500	\$94,685
2024 Median Home Value	\$377,210	\$386,076	\$414,007
2024 Average Household Size	2.30	2.59	2.57
2024 Total Housing Units	8,893	69,552	180,704
% of Housing Units Occupied by Renter	69.3%	48.4%	45.4%

For More Information Contact Us

TODD NOEL, CCIM

Vice Chairman
DIR +1 602 222 5190
todd.noel@colliers.com

KYLE CAMPBELL

Senior Vice President
DIR +1 602 222 5062
kyle.campbell@colliers.com

MATT BANISZEWSKI

Vice President
DIR +1 602 222 5176
matt.baniszewski@colliers.com



COLLIERS

2390 E Camelback Rd, Suite 100
Phoenix, AZ 85016
www.colliers.com/arizona

This document has been prepared by Colliers for advertising and general information only. Colliers makes no guarantees, representations or warranties of any kind, expressed or implied, regarding the information including, but not limited to, warranties of content, accuracy and reliability. Any interested party should undertake their own inquiries as to the accuracy of the information. Colliers excludes unequivocally all inferred or implied terms, conditions and warranties arising out of this document and excludes all liability for loss and damages arising there from. This publication is the copyrighted property of Colliers and /or its licensor(s). © 2025. All rights reserved. This communication is not intended to cause or induce breach of an existing listing agreement. Colliers International AZ, LLC.



8900

N 22nd Avenue

PHOENIX, AZ