

Property For Lease

120-34 Queens Blvd | Kew Gardens, NY 11415

Retail Space Available

Ground Floor: Approximately 3,201 SF

Basement: Approximately 2,080 SF



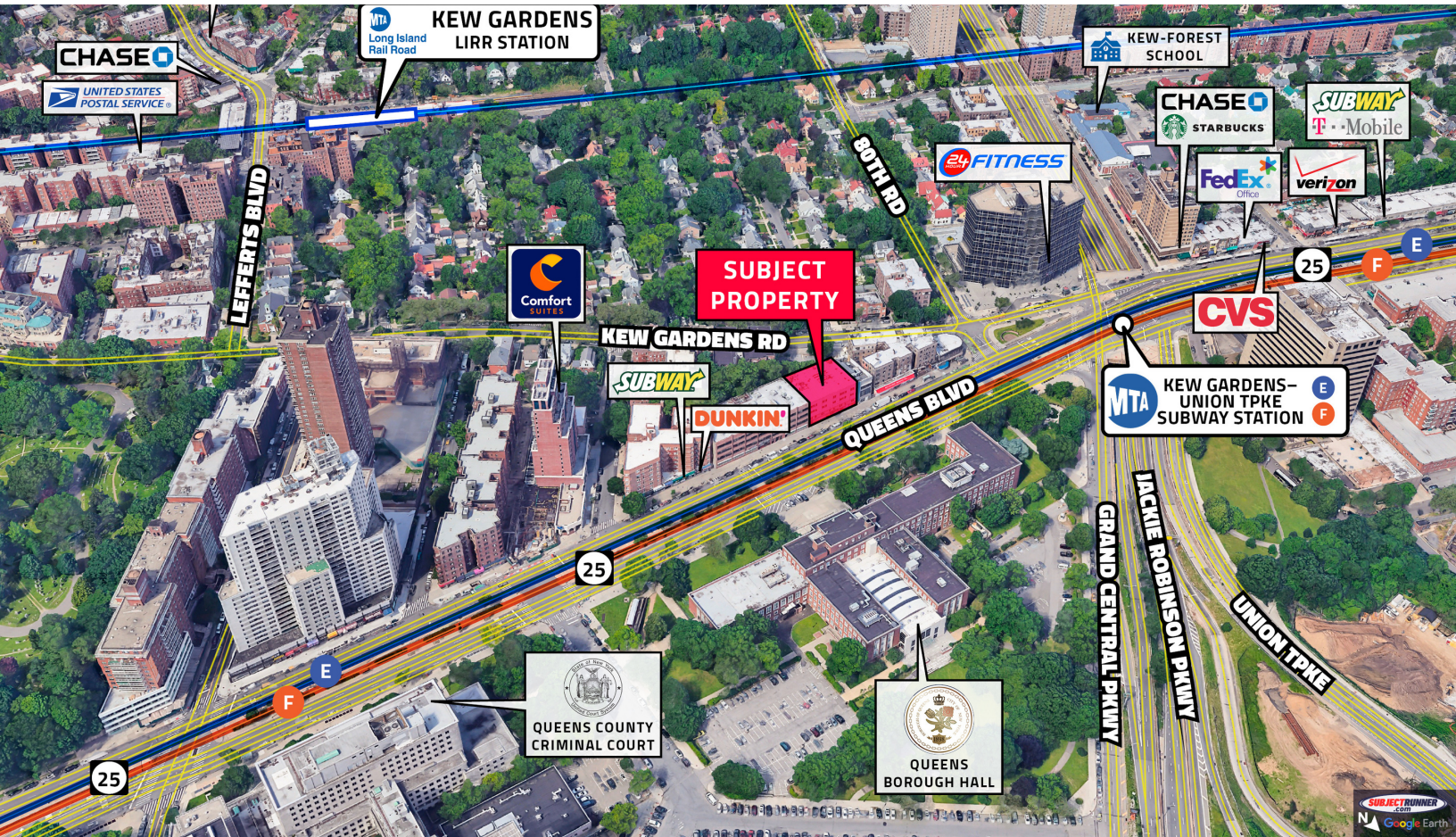
Michael Robbins | MRobbins@pihc.com | 212.951.3828



PHILIPS INTERNATIONAL

Property For Lease

120-34 Queens Blvd | Kew Gardens, NY 11415



Property Overview

- This property is located on the Queens Blvd (Rte. 25), in the Boro of Queens, City of New York. Queens Blvd. is a direct route into Midtown Manhattan that connects with the Long Island Expressway (I-495), the Grand Central Parkway, The Jackie Robinson Parkway, The Van Wyck Expressway (I-678), and Northern Boulevard (Rte. 25A), all major high traffic thoroughfares.
- This property, located diagonally across from the Queens County Courthouse, is just minutes from Midtown Manhattan via subway (the E & F trains); just 1 block from the Crossroads Office Tower, with 12 floors of 24,000 sf per floor. It is 10 miles from La Guardia and Kennedy airports; minutes from the Whitestone, Throgs Neck and Triboro bridges. There is a large municipal parking facility located adjacent to this property.

Michael Robbins | MRobbins@pihc.com | 212.951.3828



PHILIPS INTERNATIONAL

Property For Lease

120-34 Queens Blvd | Kew Gardens, NY 11415



DEMOGRAPHICS	1/2 MILE	1 MILE	2 MILES
Population	22,944	92,757	372,217
Average HH Income	\$95,781	\$94,643	\$83,418
Total HH	10,989	38,675	135,325
Average Family Size	2.1	2.4	2.7
Median Age	39	37.9	37.6

Michael Robbins | MRobbins@pihc.com | 212.951.3828

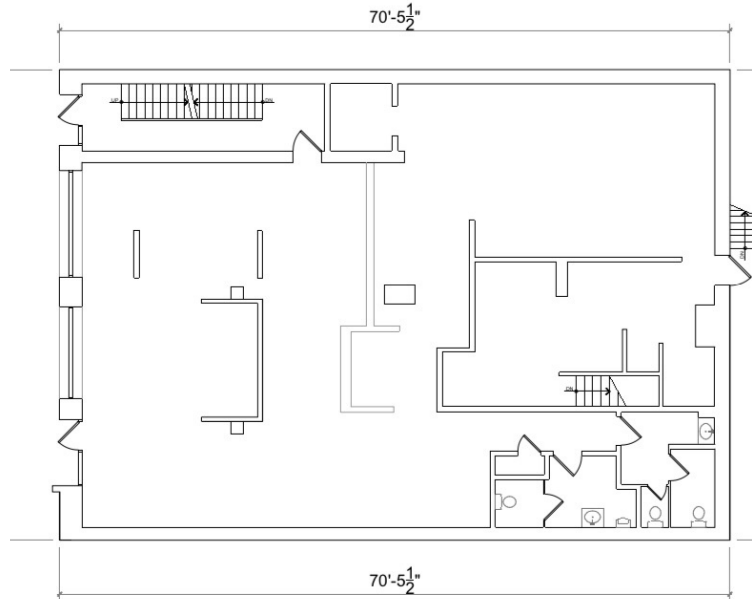


PHILIPS INTERNATIONAL

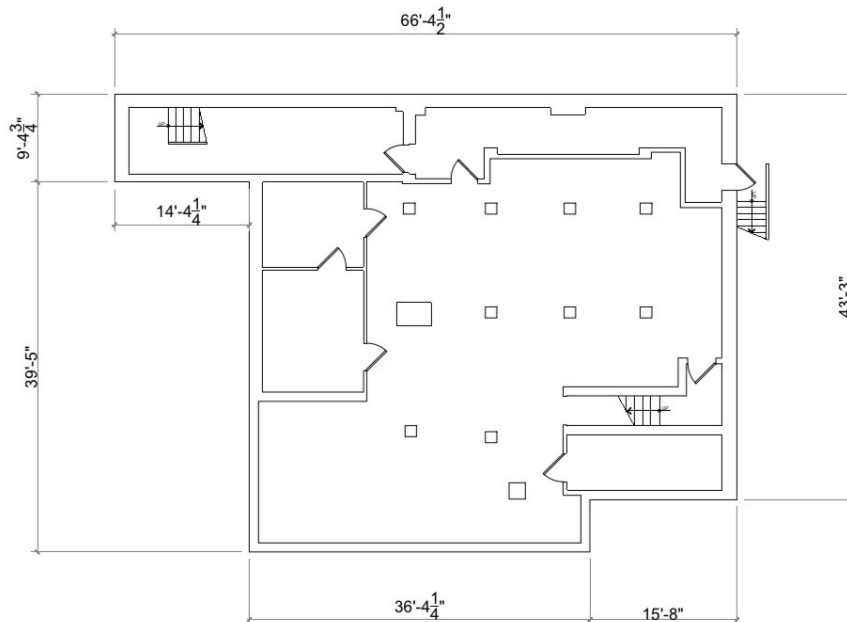
Property For Lease

120-34 Queens Blvd | Kew Gardens, NY 11415

Ground Floor



Basement Floor



All areas, conditions and dimensions are approximate. This plan is intended for identification purposes only and is not to be deemed a representation by Landlord as to accuracy of square footage.

Michael Robbins | MRobbins@pihc.com | 212.951.3828



PHILIPS INTERNATIONAL