

180 THROOP AVENUE, BROOKLYN, NY 11206

FOR LEASE

# 7,400 SF FRESH PROGRAM RETAIL SPACE

Between Ellery Street & Park Avenue



**SHLOMI BAGDADI**  
212.433.3355 x101  
sb@tristatecr.com

**FREDY BAGDADI**  
212.433.3355 x1003  
freddy.b@tristatecr.com

**TRI STATE COMMERCIAL®**



## PROPERTY SUMMARY

### LOCATION

Located in the Bedford-Stuyvesant neighborhood of Brooklyn

### HIGHLIGHTS

- FRESH Program
- New Development
- 120 FT Glass Corner

### SPACE DETAILS

- First Floor
- Supermarket Space
- Vanilla Box
- High Ceilings
- 3,300 SF Basement

### TRANSPORTATION

**J M** Trains at Flushing Avenue

**B43** Bus Line

### NEIGHBORS

Taco Bell, Walgreens, Chipotle, Planet Fitness, Burger King, Chase Bank, Starbucks, T-Mobile, TD Bank, Foot Locker, Dunkin', Popular Bank, Max Deals, Little Caesars, and more!

**\$55/SF**

Offered At



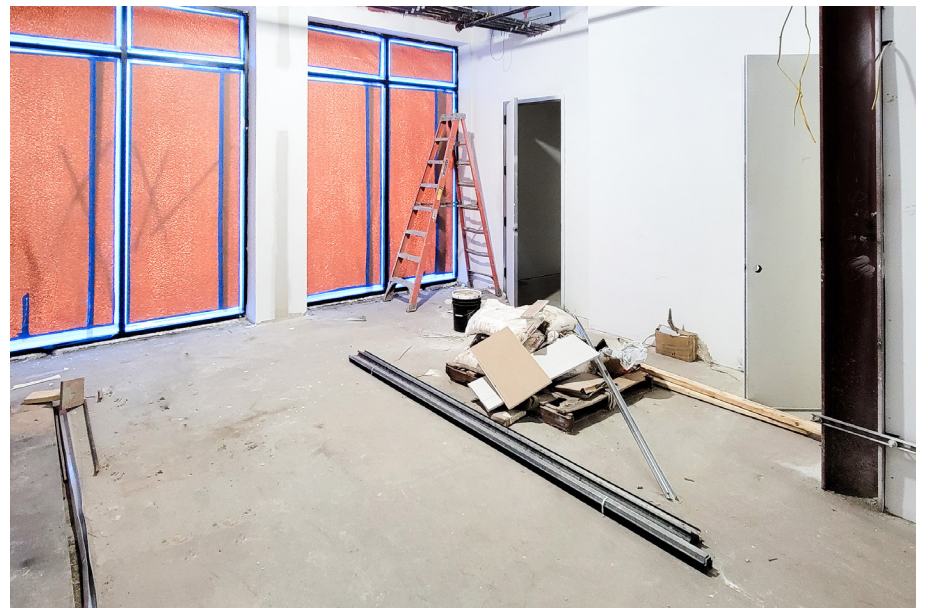


## PROPERTY PHOTOS

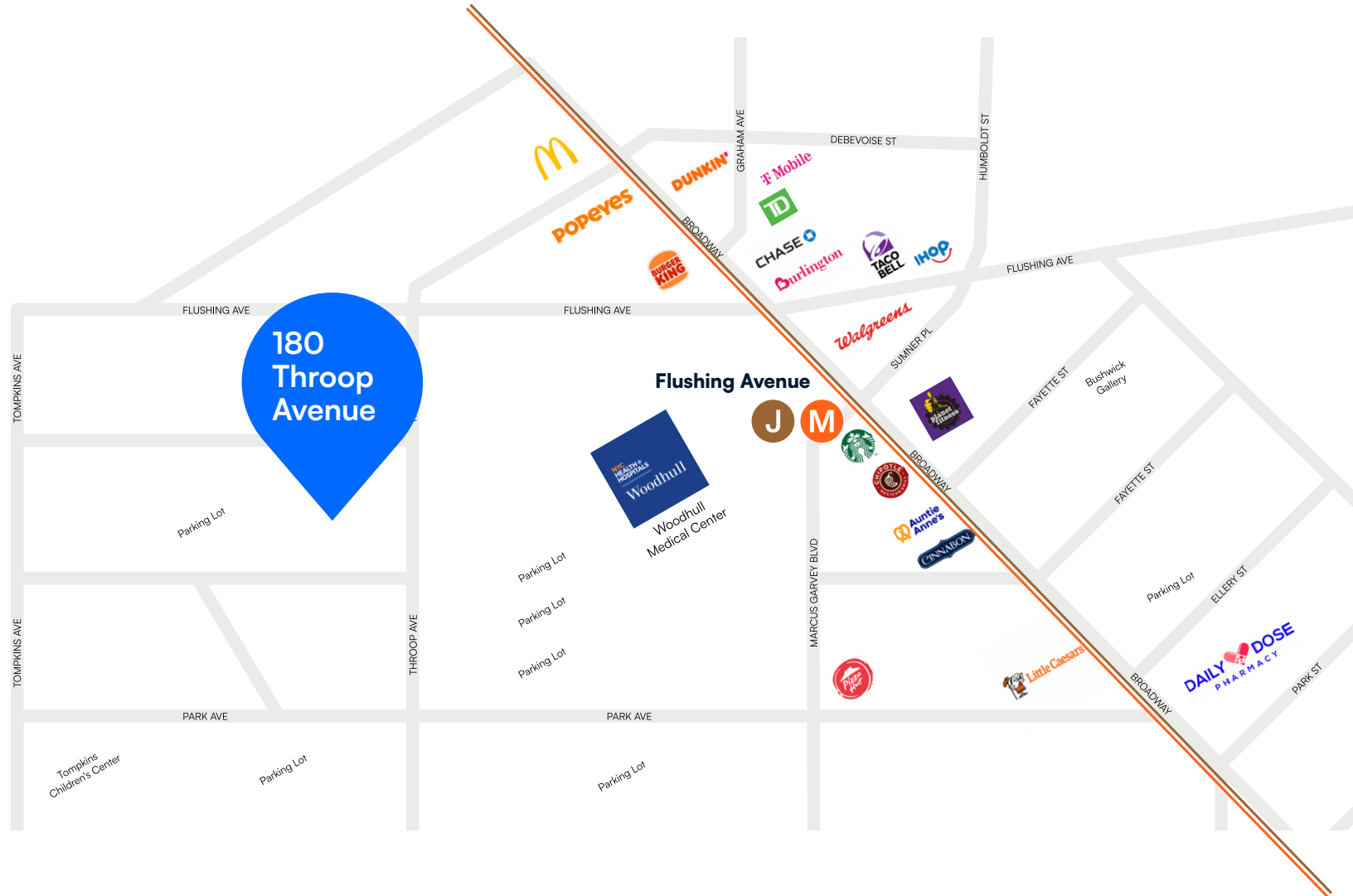





## PROPERTY PHOTOS



# RETAIL MAP







## PLACE YOURSELF ON THE BEDFORD STUYVESANT MAP

## LOCATION OVERVIEW

### BEDFORD-STUYVESANT

Rooted in the creative energy of Brooklyn's evolving neighborhoods, 180 Throop Avenue sits at the intersection of Williamsburg and Bedford-Stuyvesant, where a mix of historic brownstones and modern developments define the urban landscape. The area has become a hub for artists, entrepreneurs, and young professionals, fostering a vibrant mix of culture and commerce. Just blocks from Broadway and the J/M/Z subway lines, the property benefits from strong connectivity to Manhattan and other parts of Brooklyn. Surrounding streets are dotted with eclectic cafés, neighborhood eateries, boutique shops, and community-driven spaces, reflecting the district's blend of tradition and innovation. With its growing residential base and steady influx of foot traffic, the location offers fertile ground for creative ventures, retail concepts, and hospitality opportunities to flourish.

### POINTS OF INTEREST

- Herbert Von King Park
- Bedford-Stuyvesant Historic District
- Sumner Playground
- Brooklyn Children's Museum

### DEMOGRAPHICS

*Within a 1-mile radius from the property*

**73,844**

Total households

**192,783**

People

**\$73,699**

Avg Household Income

180 THROOP AVENUE, BROOKLYN, NY 11206

# 7,400 SF FRESH PROGRAM RETAIL SPACE

Between Ellery Street & Park Avenue

For Pricing Call: **212.433.3355**

**SHLOMI BAGDADI**  
212.433.3355 x101  
sb@tristatecr.com

**FREDY BAGDADI**  
212.433.3355 x1003  
freddy.b@tristatecr.com

**TSC.**