

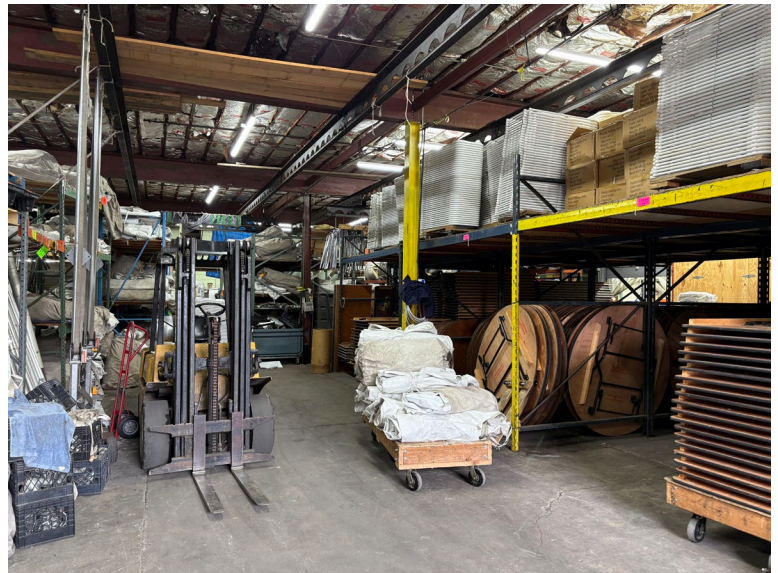


746 River Street

PATERSON, NJ

Features

- 10,000 SF industrial building for lease
- 3 phase power @ 250 amps
- 2 drive-in doors
- 11-13' clear ceiling height



For information, please contact:

Michael Schipper, SIOR

t 973-936-4173

michael.schipper@nmrk.com

Rob Loderstedt

t 973-998-1093

robert.loderstedt@nmrk.com

Haylee McCabe

t 609-276-5034

haylee.mccabe@nmrk.com

NEWMARK

One Tower Center Boulevard, Suite 1201, East Brunswick, NJ 08816
t 732-867-9001

nmrk.com

Newmark, Licensed Real Estate Broker. The information contained herein has been obtained from sources deemed reliable but has not been verified and no guarantee, warranty or representation, either express or implied, is made with respect to such information. Terms of sale or lease and availability are subject to change or withdrawal without notice.