



4802 MITCHELL AVENUE  
ST. JOSEPH, MO



# WORLD CLASS CAMPUS



# SOUTH BUILDING

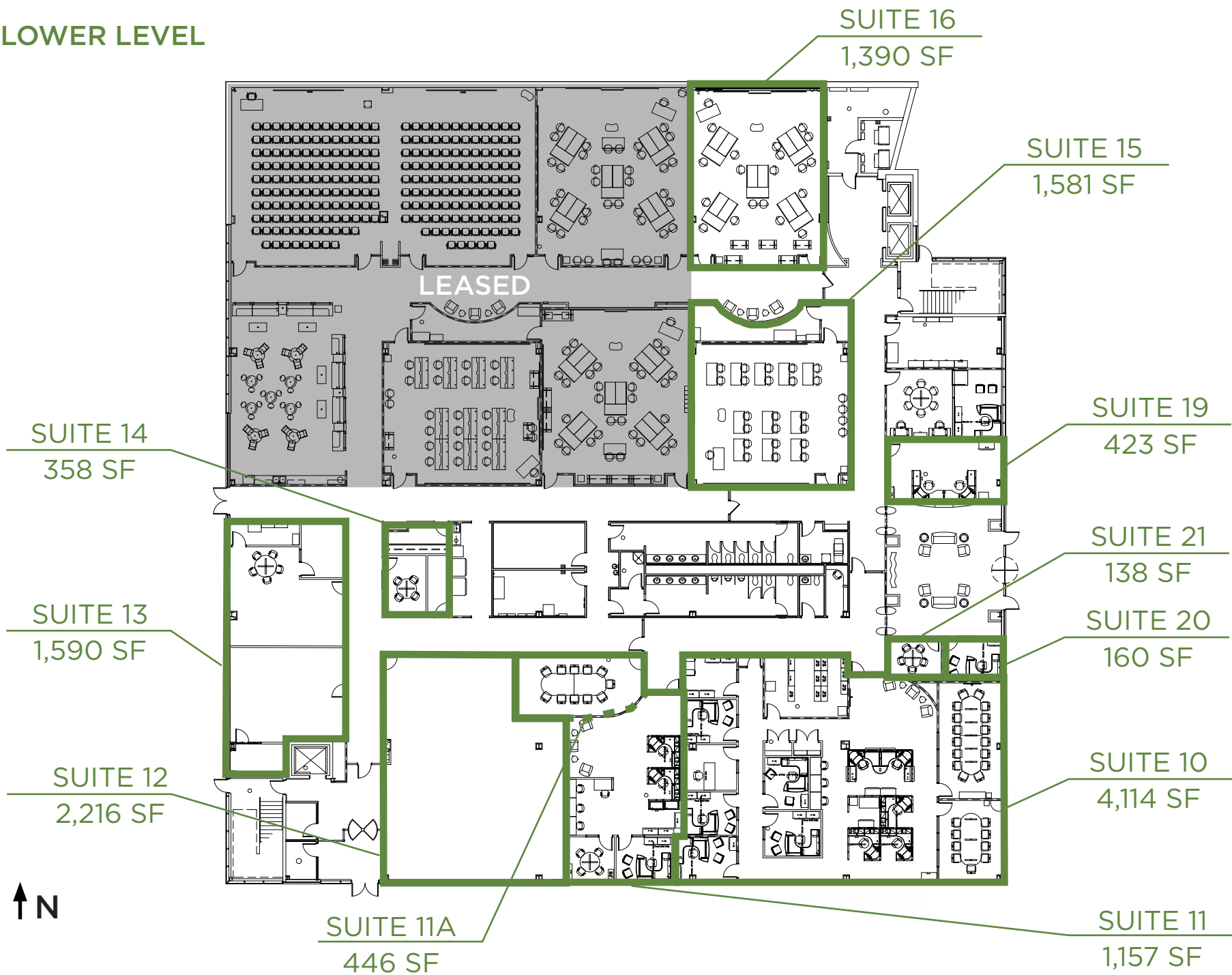


## AVAILABILITIES

LOWER LEVEL	12,523 SF
SUITE 10	4,114 SF
SUITE 11	1,157 SF
SUITE 11A	446 SF
SUITE 12	2,216 SF
SUITE 13	1,590 SF
SUITE 14	358 SF
SUITE 15	1,581 SF
SUITE 16	1,390 SF
SUITE 19	423 SF
SUITE 20	160 SF
SUITE 21	138
FLOOR 1	13,627 SF
SUITE 110	8,051 SF
SUITE 120	7,028 SF
SUITE 130	227 SF

# SOUTH BUILDING

## LOWER LEVEL



The information used to create this brochure was gathered from sources deemed reliable. Though we do not doubt its accuracy, we do not guarantee or warranty it. You and your advisors should conduct a careful independent investigation of the information to determine your satisfaction and suitability.

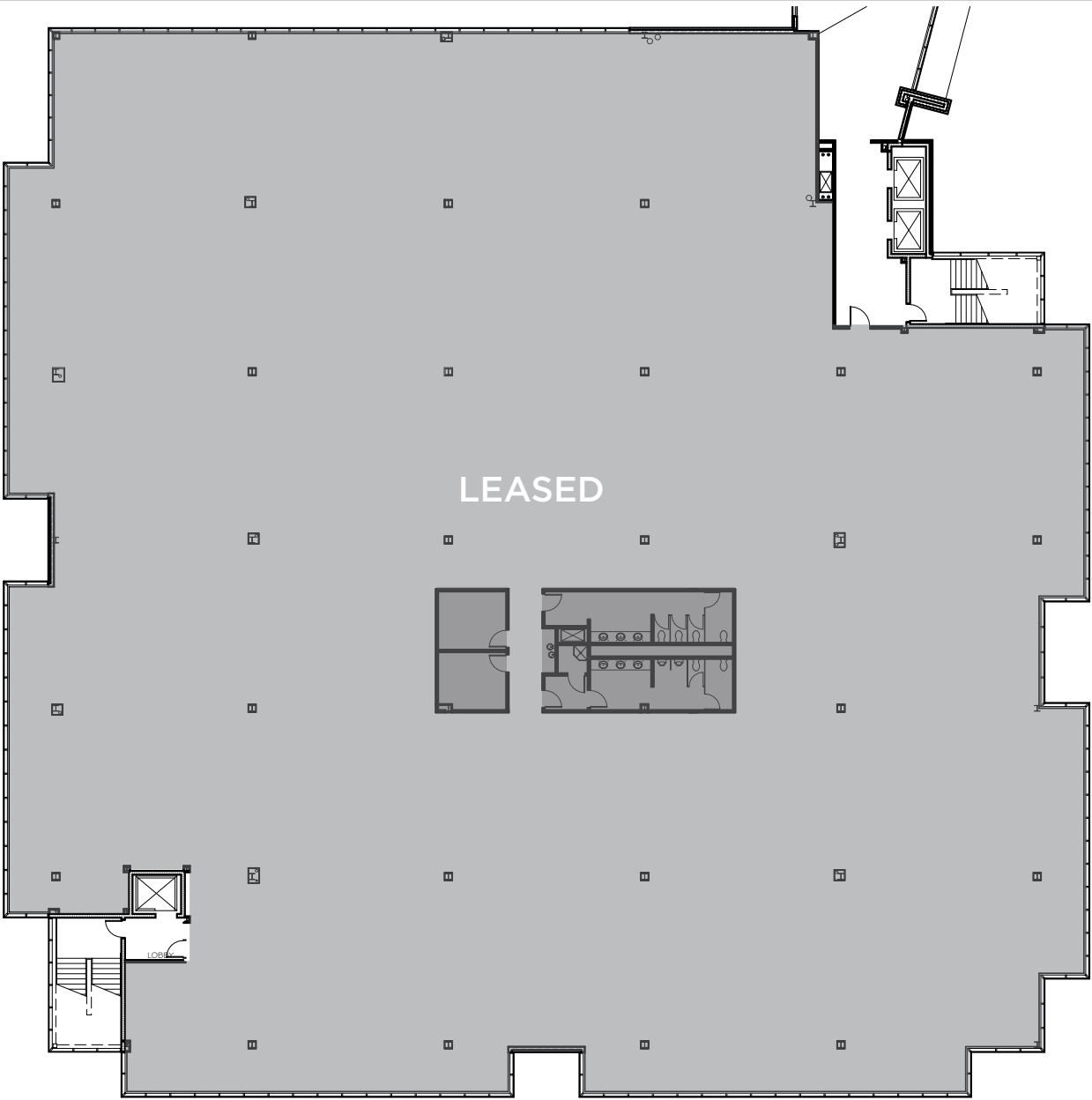
# SOUTH BUILDING

## FLOOR 1



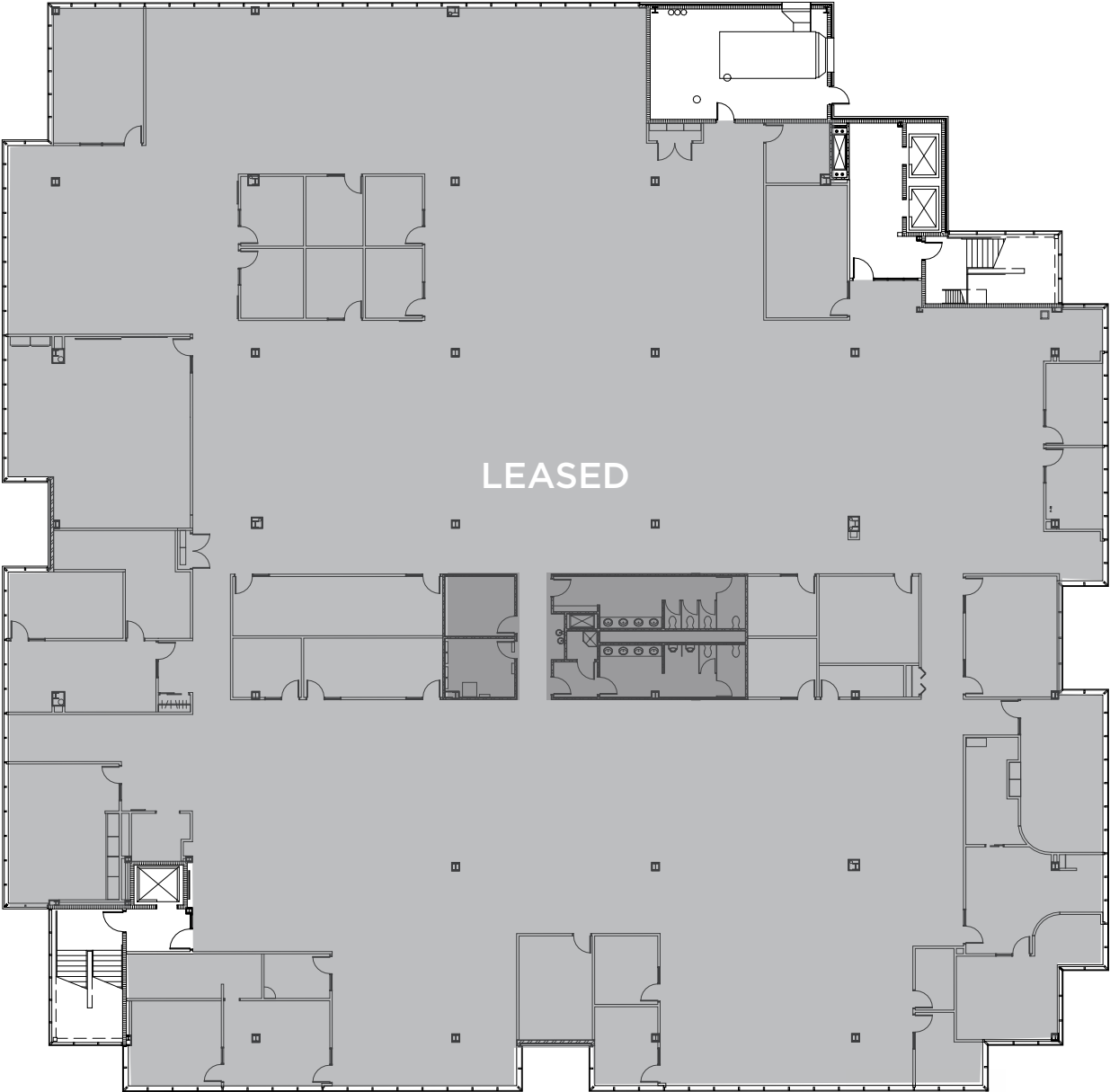
# SOUTH BUILDING

## FLOOR 2



# SOUTH BUILDING

## FLOOR 3



# EAST/WEST BUILDING

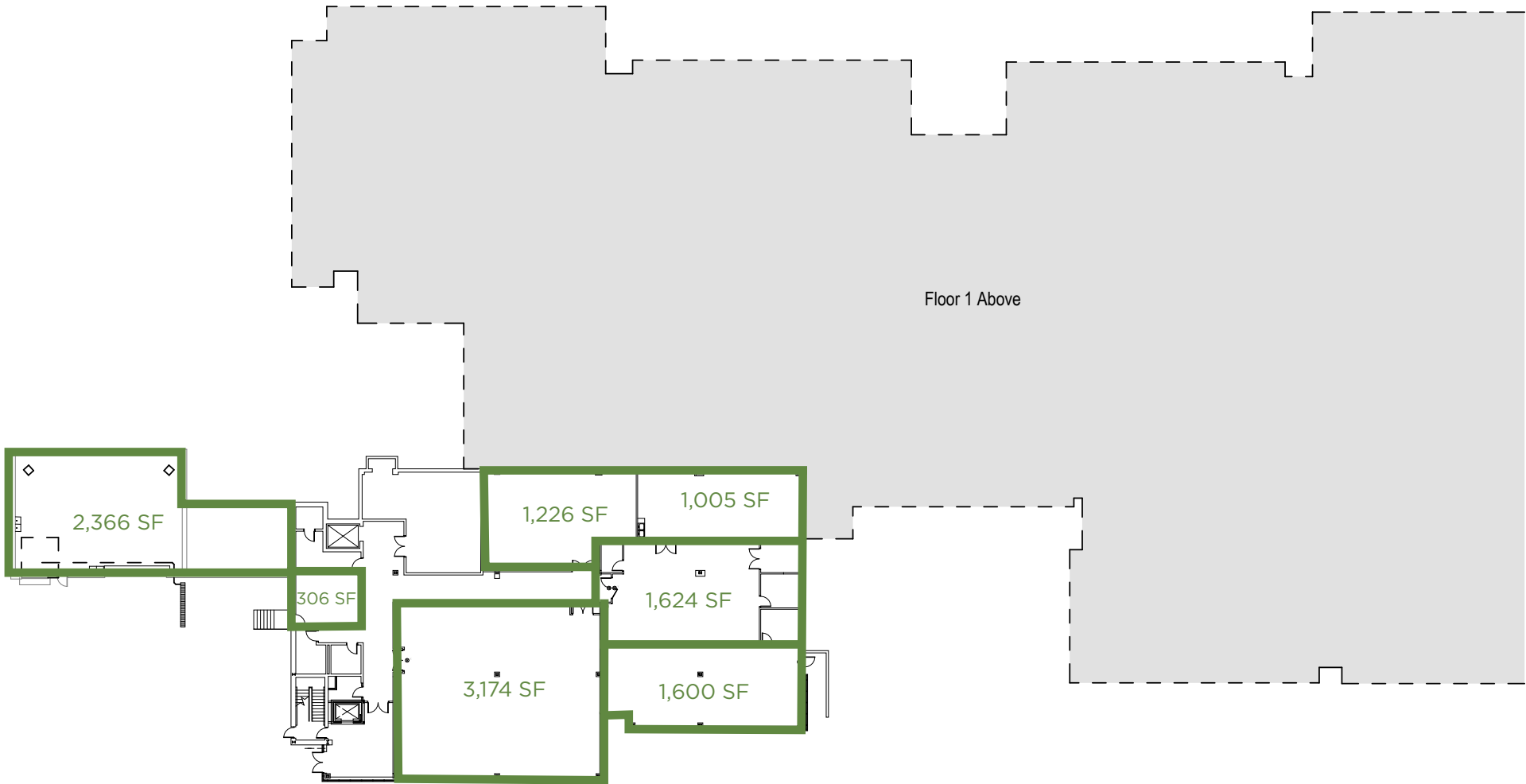


## AVAILABILITIES

TOTAL AVAILABLE	225,000 SF
LOWER LEVEL	306-11,301 SF
FLOOR 1	62,170 SF
FLOOR 2	29,621-57,654 SF
FLOOR 3	30,407-61,287 SF

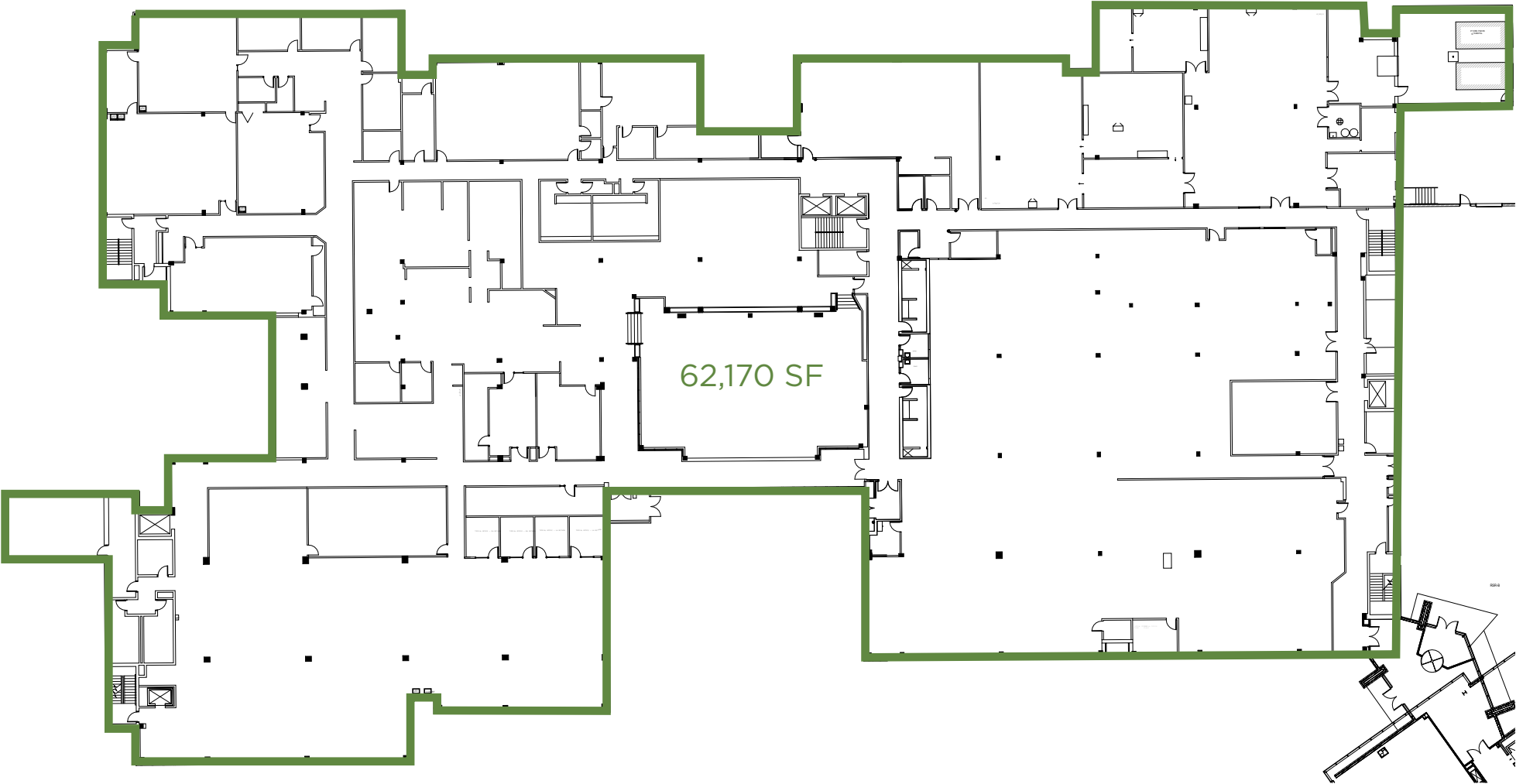
# EAST/WEST BUILDING

## LOWER LEVEL



# EAST/WEST BUILDING

## FLOOR 1



# EAST/WEST BUILDING

## FLOOR 2



WEST BUILDING

EAST BUILDING



# EAST/WEST BUILDING

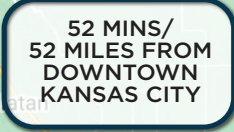
## FLOOR 3



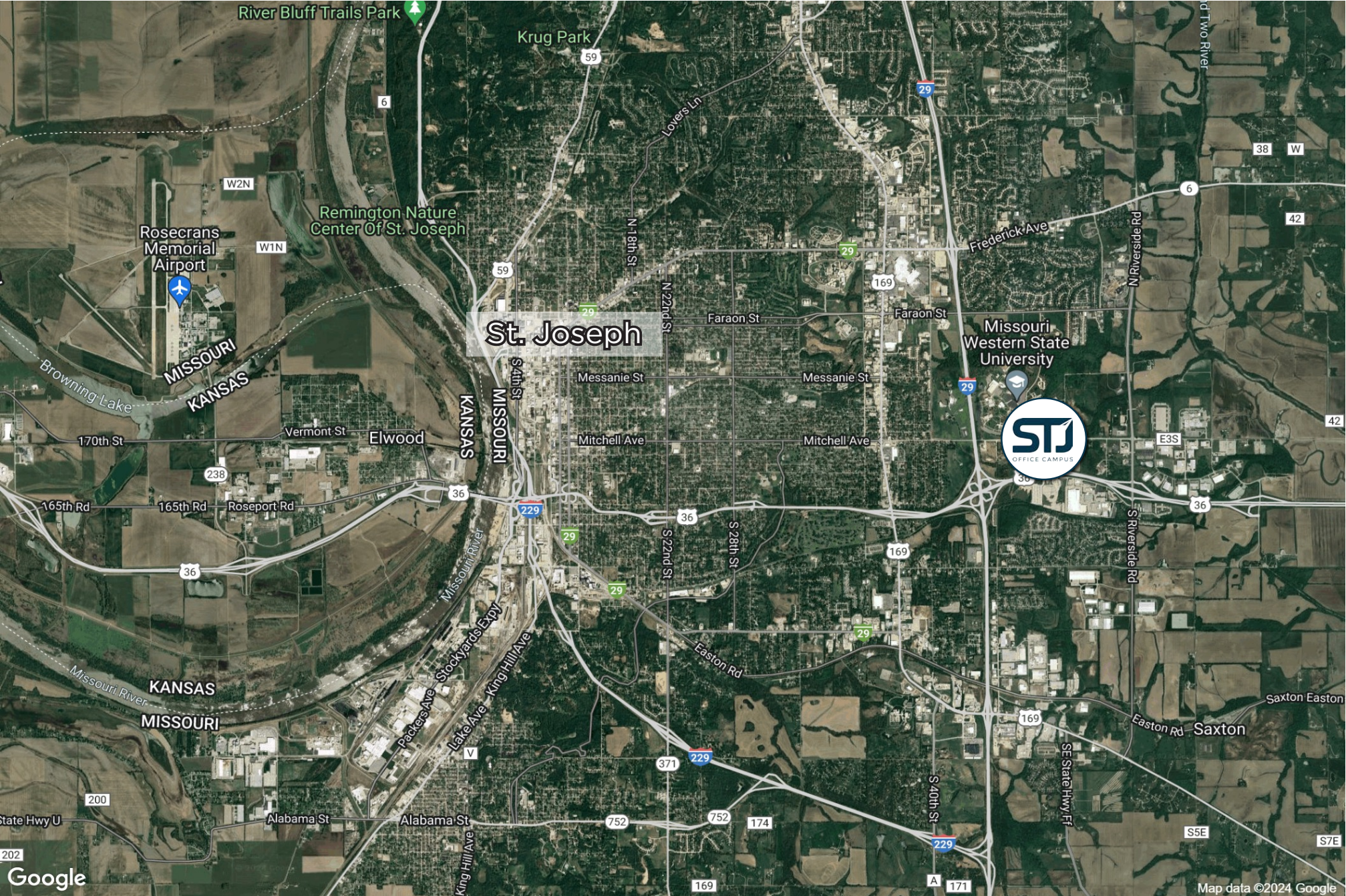
WEST BUILDING

EAST BUILDING



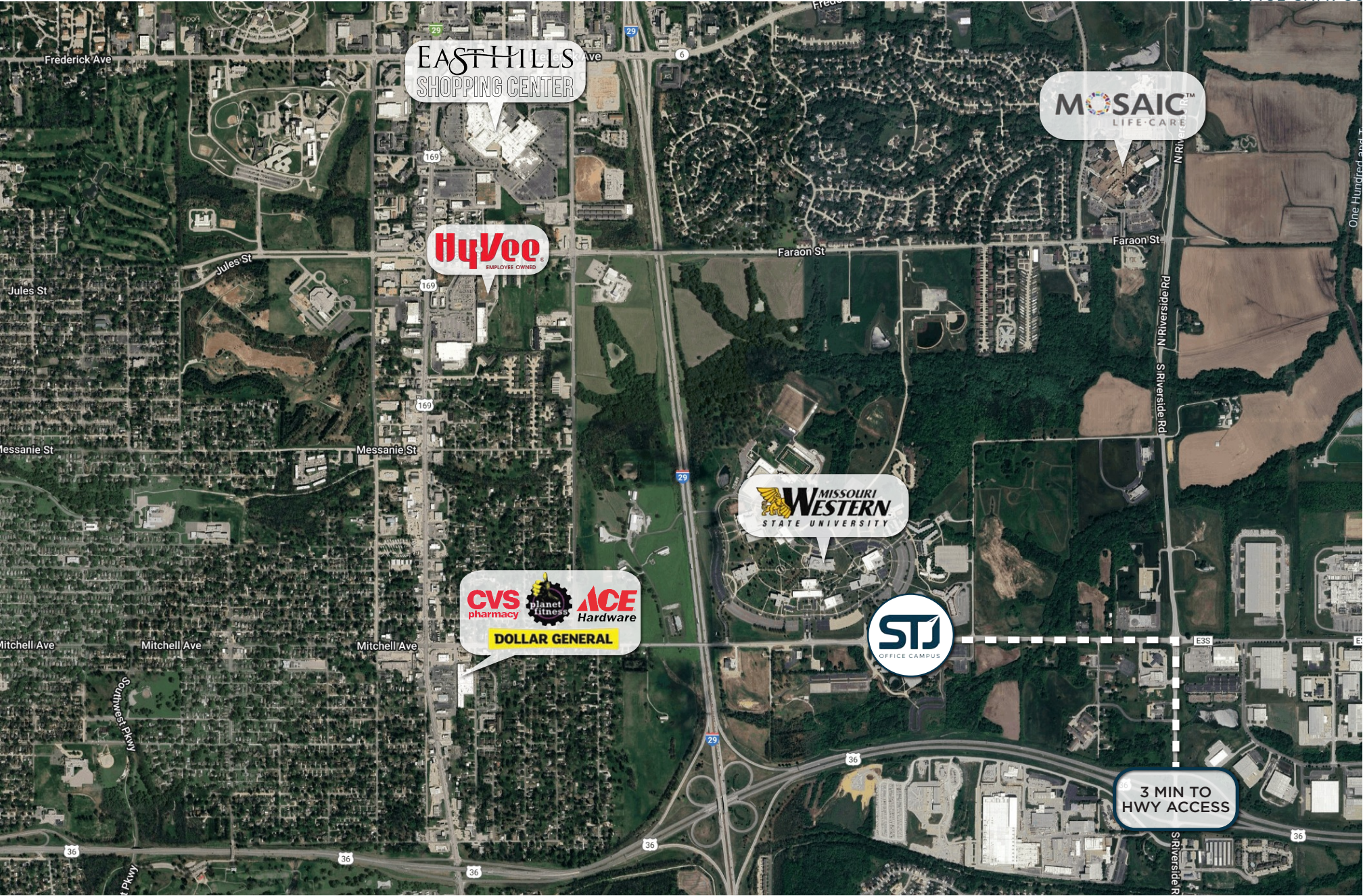


# ST. JOSEPH MAP



The information used to create this brochure was gathered from sources deemed reliable. Though we do not doubt its accuracy, we do not guarantee or warranty it. You and your advisors should conduct a careful independent investigation of the information to determine your satisfaction and suitability.

# AREA MAP



# CONTACT

## LEASING



**JAY HAWKINS**

**D** 816.895.4808

**E** JHAWKINS@OPENAREA.COM

**TIM SCHAFFER**

**D** 816.777.2535

**E** TSCHAFFER@OPENAREA.COM



**ADAM STEIN**

**D** 816.248.6821

**E** ASTEIN@BHHSSTEIN.COM

**LONNIE BASS**

**D** 816.752.8235

**E** LBASS@BHHSSTEIN.COM

**SARAH WEAVER**

**D** 816.394.0256

**E** SWEAVER@BHHSSTEIN.COM

## LEASING/MANAGEMENT



**CHRISTIAN HUFFMAN**

**D** 913.980.9891

**E** CHUFFMAN@SKYRE.COM

**KENNY ANDERSON**

**D** 612.269.5787

**E** KANDERSON@SKYRE.COM

**WES GRAMMER**

**D** 913.526.6222

**E** WGRAMMER@SKYRE.COM