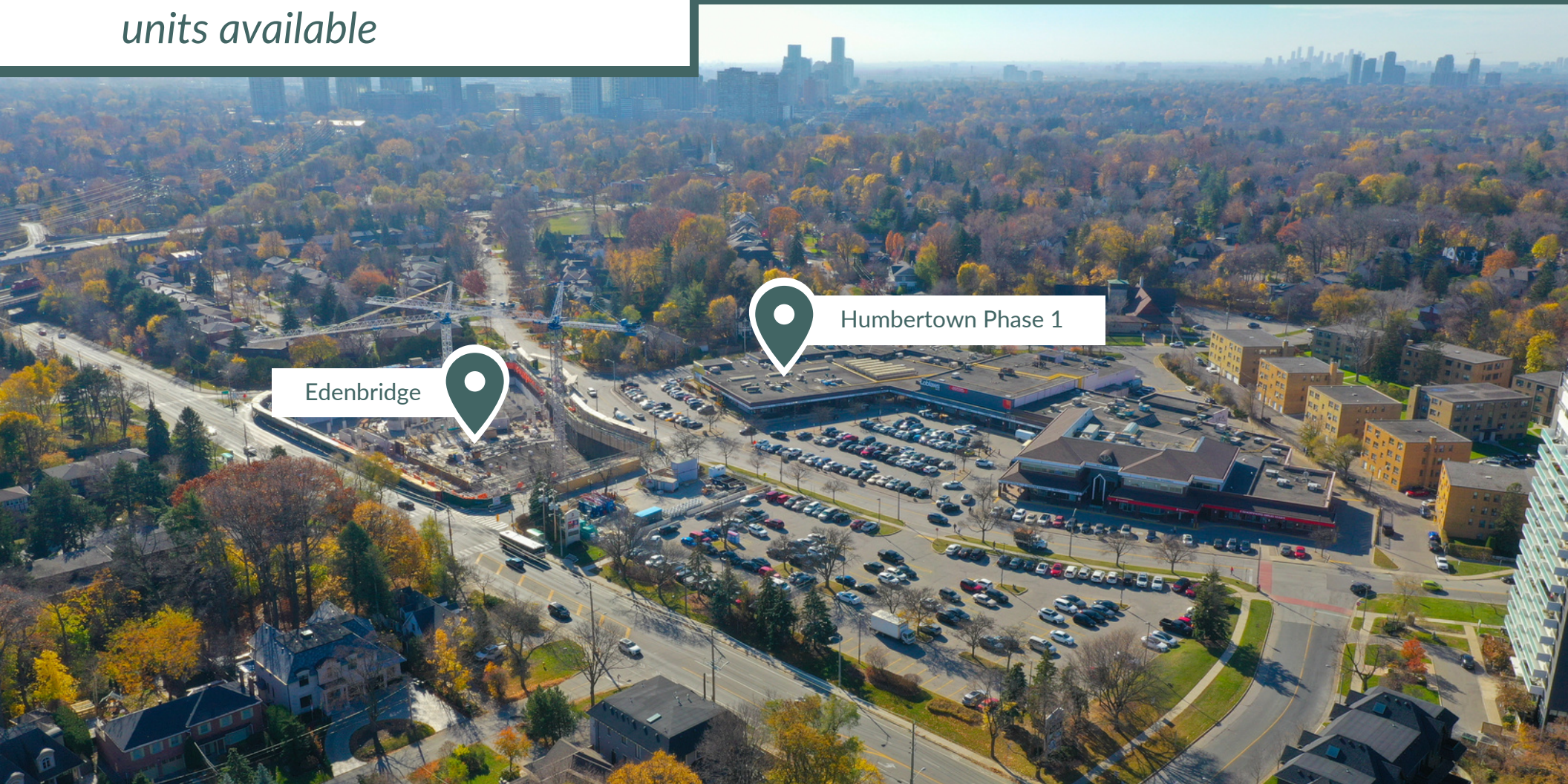


Humbertown x Edenbridge

Revitalizing The Kingsway



*630 sf to 4,100+ sf
units available*



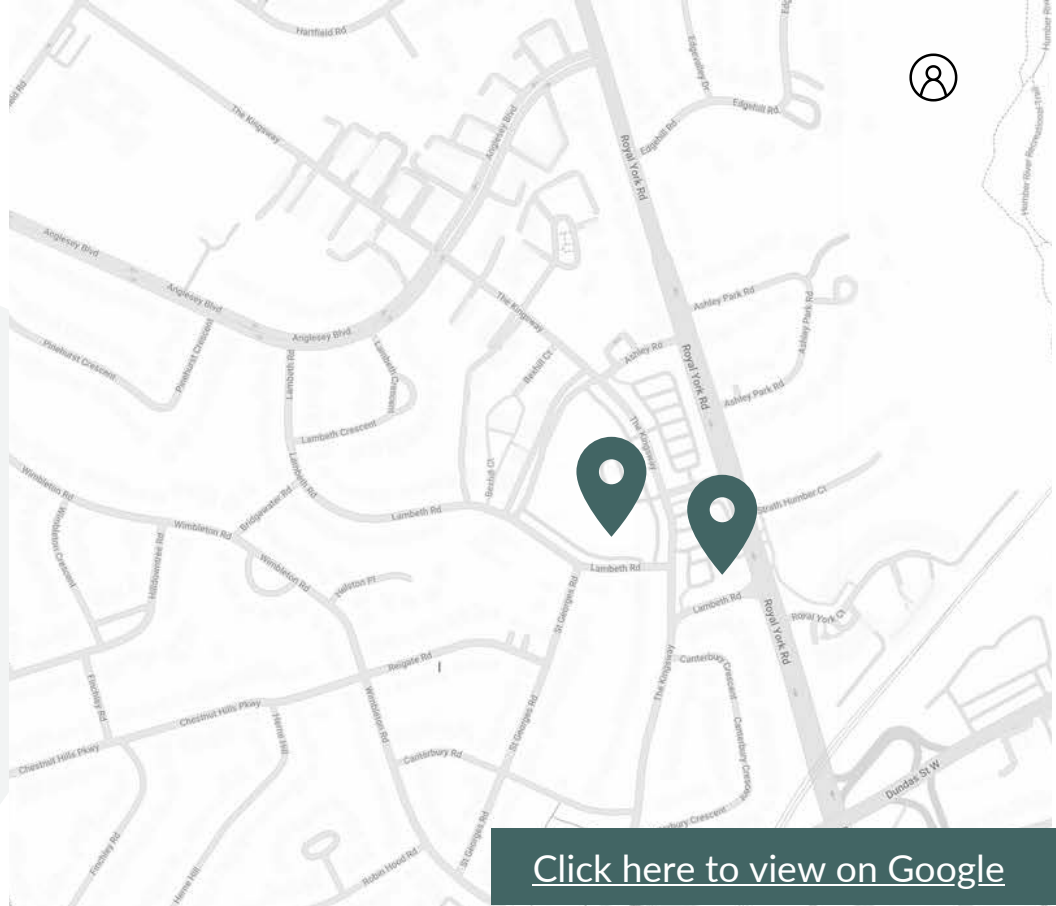
Edenbridge

Humbertown Phase 1

The Ultimate Location

To the west of the city of Toronto is the affluent enclave of Humber Valley. Known for its rolling landscape and mature tree-lined streets, this tranquil setting features a mix of old English and contemporary-style homes on ravine lots, with more residential developments on the way.

We're committed to continuous improvements that allow us to better serve our visitors, tenants and the community. We are revitalizing the area by beginning a renovation of the shopping centre in tandem with the Edenbridge development. These projects will bring over 10,000 sf of new leasing opportunities in addition to over 200 new residential units and Townhomes.



[Click here to view on Google](#)



Neighbourhood Demographics



Population (5km)
347,238



Household Income (5km)
\$136,137



Households (5km)
140,298



Bike Score
96



Walk Score
75

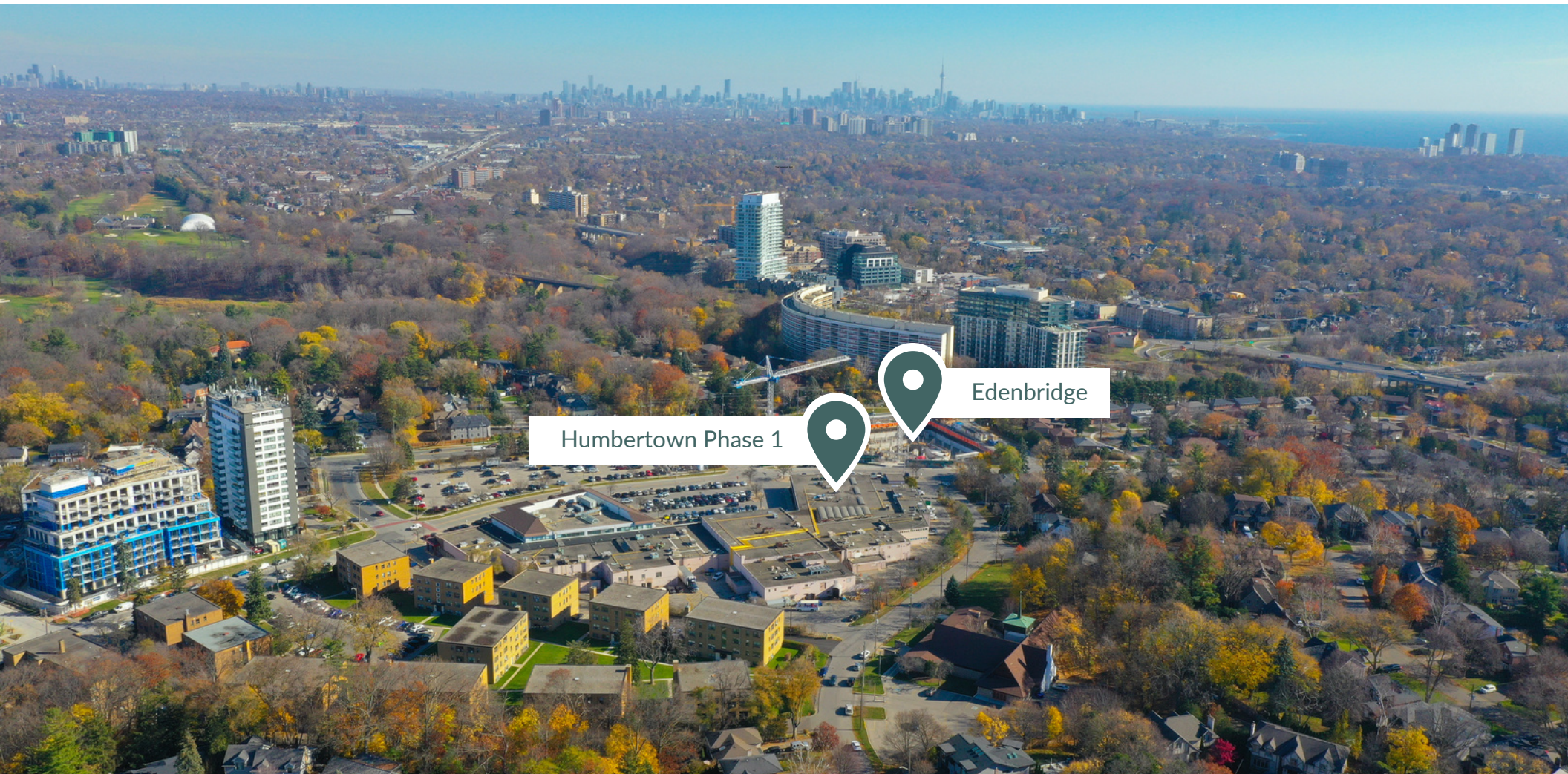


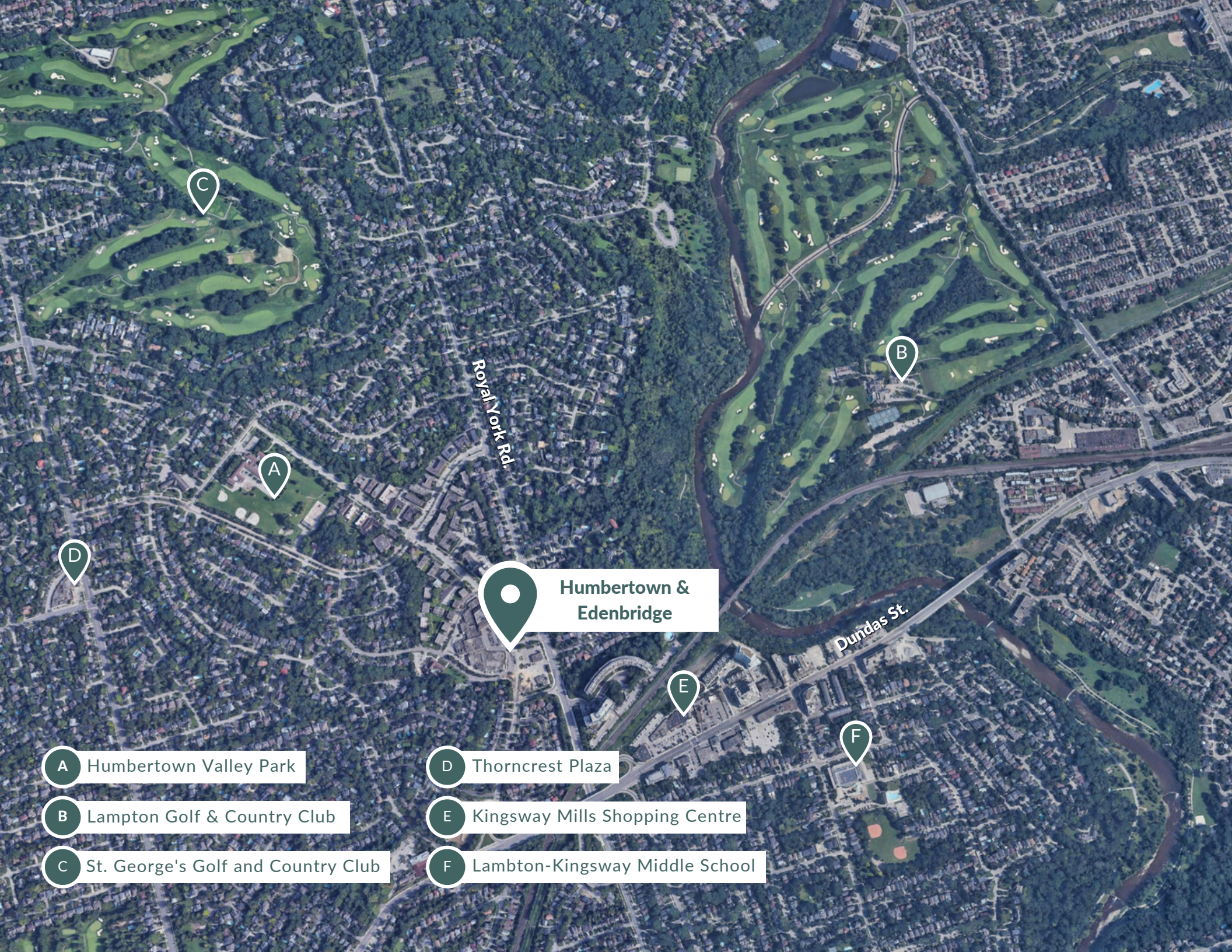
Transit Score
55



Neighbourhood Features

- 3-minute drive to Lambton-Kingsway Middle School (1.1 kms)
- 3-minute drive to Humber Valley Park (1.5 kms)
- 8-minute drive Lambton Golf & Country Club (3.1 kms)
- 10-minute drive to Kipling Go (4.0 kms)
- 12-minute drive to West Park Healthcare Centre (5.3 kms)
- 16-minute drive to Toronto Pearson Airport (11.8 kms)
- 20-minute drive to Humber College (12.7 kms)
- 25-minute drive to Downtown Toronto (15.8 kms)





Humbertown & Edenbridge

A Humbertown Valley Park

B Lampton Golf & Country Club

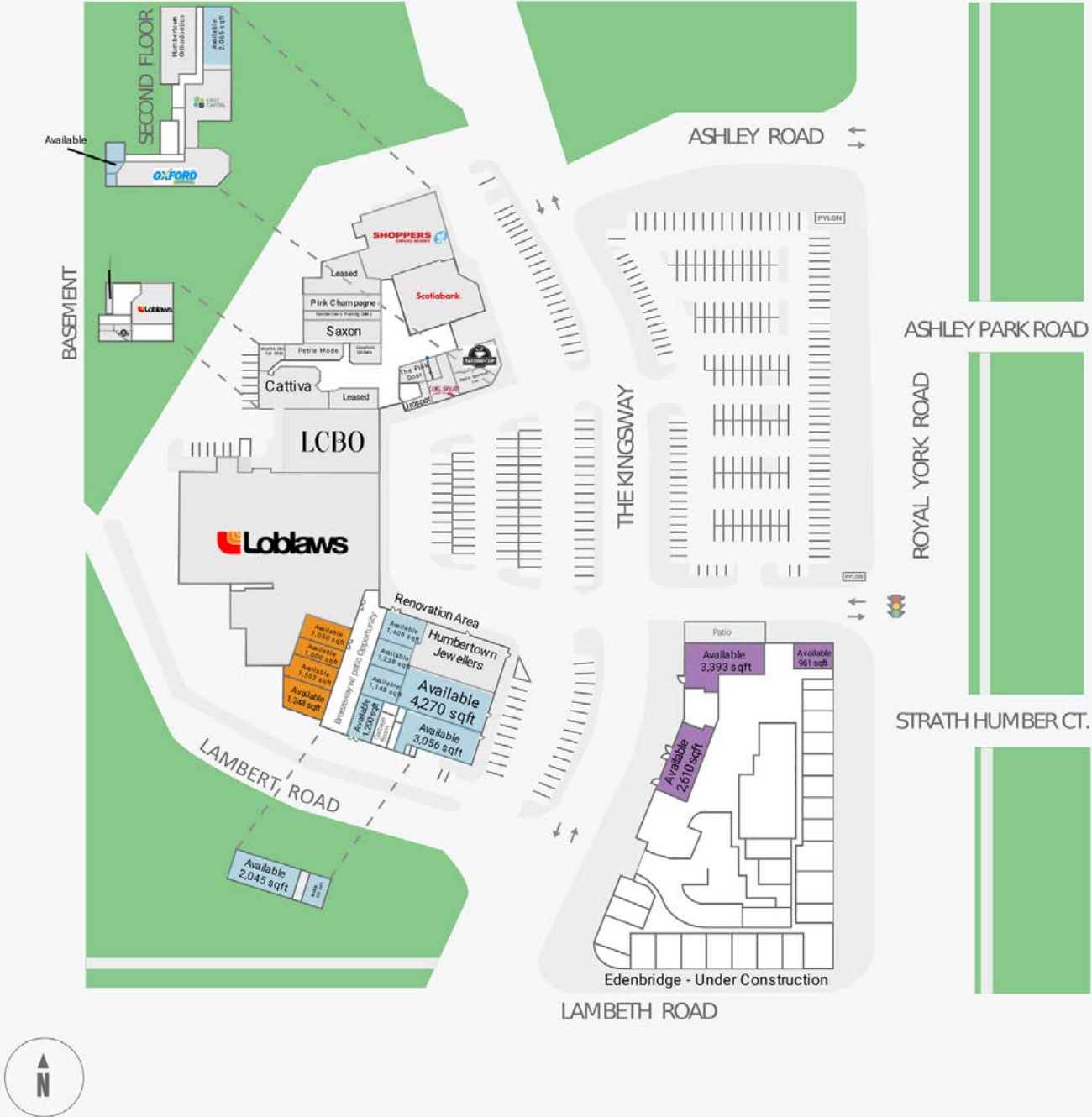
C St. George's Golf and Country Club

D Thorncrest Plaza

E Kingsway Mills Shopping Centre

F Lambton-Kingsway Middle School

Site Plan



Edenbridge

255 The Kingsway , Toronto, ON

Located in the Humber Valley Neighbourhood and situated right next to Humbertown Shopping Centre, this 9-storey, mixed-use building will stand between The Kingsway and Royal York Road. Along with the 183 suits and 24 townhomes, the Edenbridge development will also offer approximately 7,600 sf of brand-new commercial leasing opportunities.

With frontage along The Kingsway and Royal York Road, these new commercial spaces provide ample opportunities for new or expanding businesses to take advantage of the densely populated neighbourhood.



*Rendering

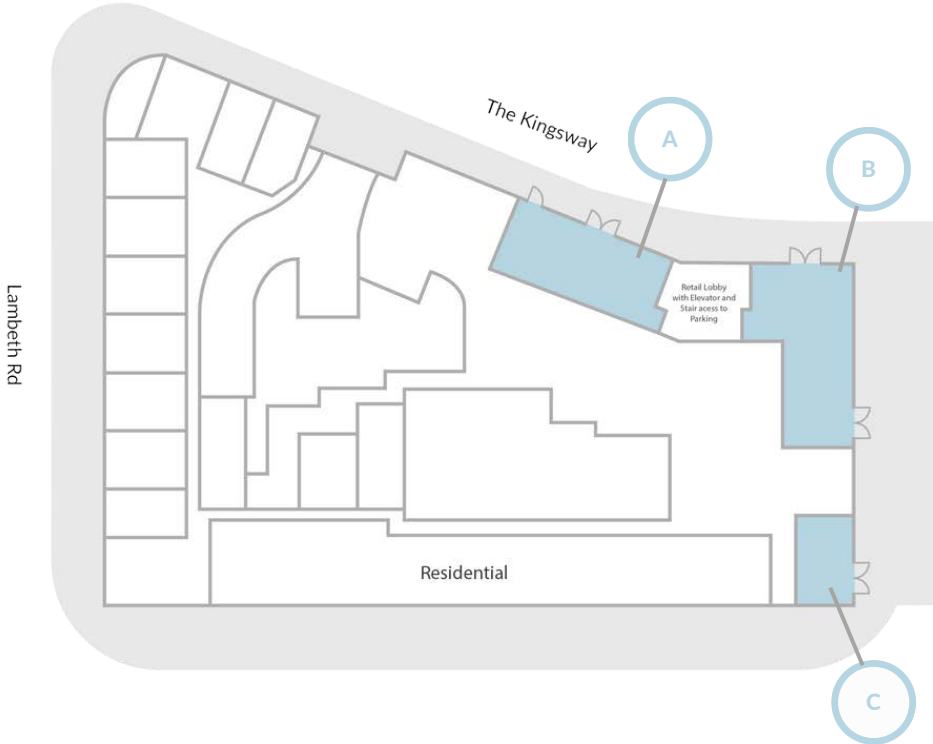


*Rendering

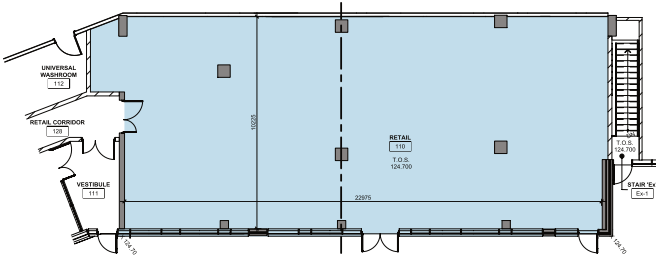
Edenbridge

Leasing Opportunities

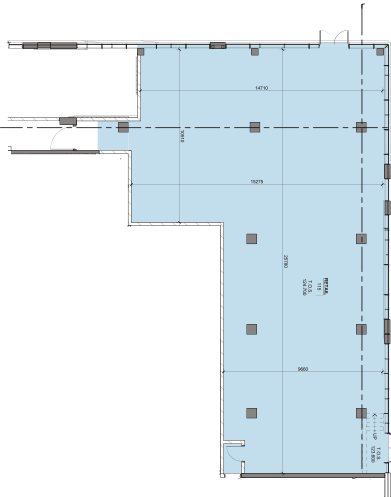
Space	SF	Available
A - Retail 110	2,610 sf	05/01/2025
B - Retail 115	3,393 sf	05/01/2025
C - Retail 118	961 sf	05/01/2025



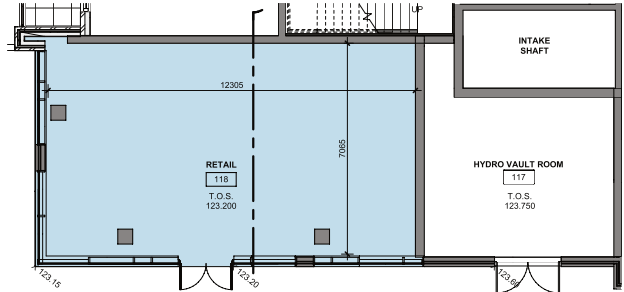
A - Retail 110



B - Retail 115



C - Retail 118

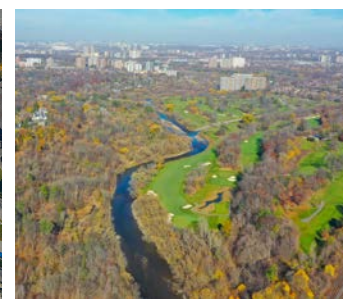


Humbertown Revitalization

270 The Kingsway , Toronto, ON

Located in the Humber Valley neighbourhood of Etobicoke, Humbertown Shopping Centre has been a go-to shopping destination since 1956. This one-stop shopping hub provides everything you need from daily essentials to exciting retailers and eateries.

To continue making this location a go-to destination for the surrounding neighbourhood we are beginning the first phase of a three-phase revitalization plan for the shopping centre. This first phase will begin on the southeast side of the centre bringing a new public corridor that will connect a variety of retail spaces ranging from 630 - 4,187 sf, allowing people to enjoy the open space while shopping.



Humbertown Revitalization Phase 1

Leasing Opportunities

Space	SF	Available
A - RU1	1,200 sf	08/01/2024
B - RU2A	1,148 sf	08/01/2024
C - RU2B	1,238 sf	08/01/2024
D- RU3	1,408 sf	08/01/2024
E - RU4	4,270 sf	08/01/2024
F - RU5	3,056 sf	08/01/2024
G - RU6	1,248 sf	08/01/2024
H-RU7	1,552 sf	08/01/2024
I-RU8	1,000 sf	08/01/2024
J-RU9	1,050 sf	08/01/2024
Office 1	2045 sf	08/01/2024
Office 2	635 sf	08/01/2024

