

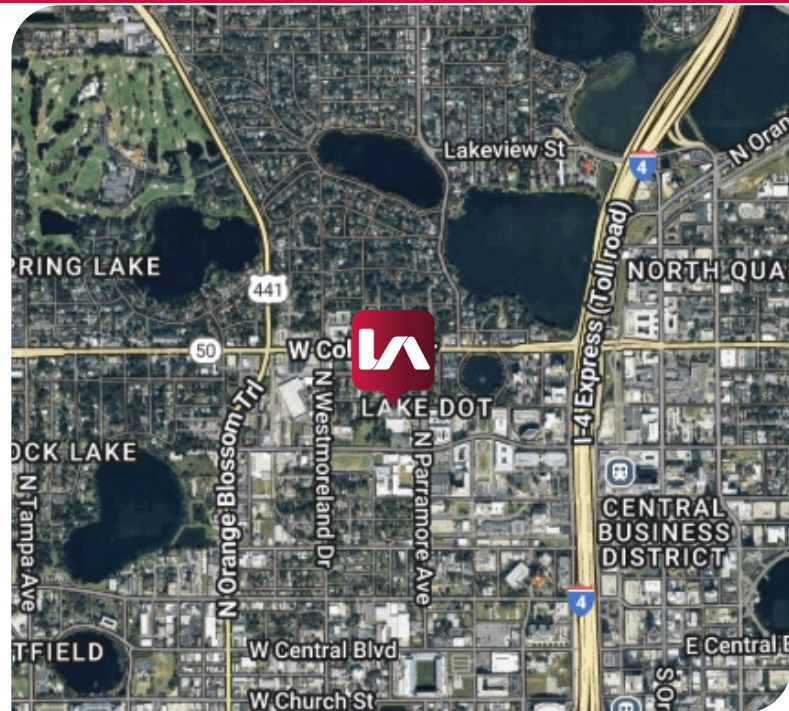
DOWNTOWN ORLANDO INDUSTRIAL WAREHOUSE FOR SALE NOW

526 N. PARRAMORE AVE.
ORLANDO, FL 32801



PROPERTY HIGHLIGHTS

Building Size:	54,000± SF
Office Size:	5,000± SF
Docks:	Four (4) dock-high doors
Drive-in Door:	One (1) oversized drive-in door
Clear Height:	21' – 27'
Parking:	Abundant on-site car parking
Outdoor Storage:	Dedicated outdoor storage area
Year Built:	1980
Land Size:	2.71 Acres
Use:	Warehouse / Distribution
SALE PRICE:	Contact Broker for Pricing



Leasing Contacts:

Christopher "CJ" Griffith, SIOR
Vice President
cgriffith@lee-associates.com
D 321.281.8508

Ryan Griffith
Senior Vice President/Principal
rgriffith@lee-associates.com
D 321.281.8512

DOWNTOWN ORLANDO INDUSTRIAL WAREHOUSE
526 N. PARRAMORE AVE.
ORLANDO, FL 32801



All information furnished regarding property for sale, rental or financing is from sources deemed reliable, but no warranty or representation is made to the accuracy thereof and same is submitted to errors, omissions, change of price, rental or other conditions prior to sale, lease or financing or withdrawal without notice. No liability of any kind is to be imposed on the broker herein.

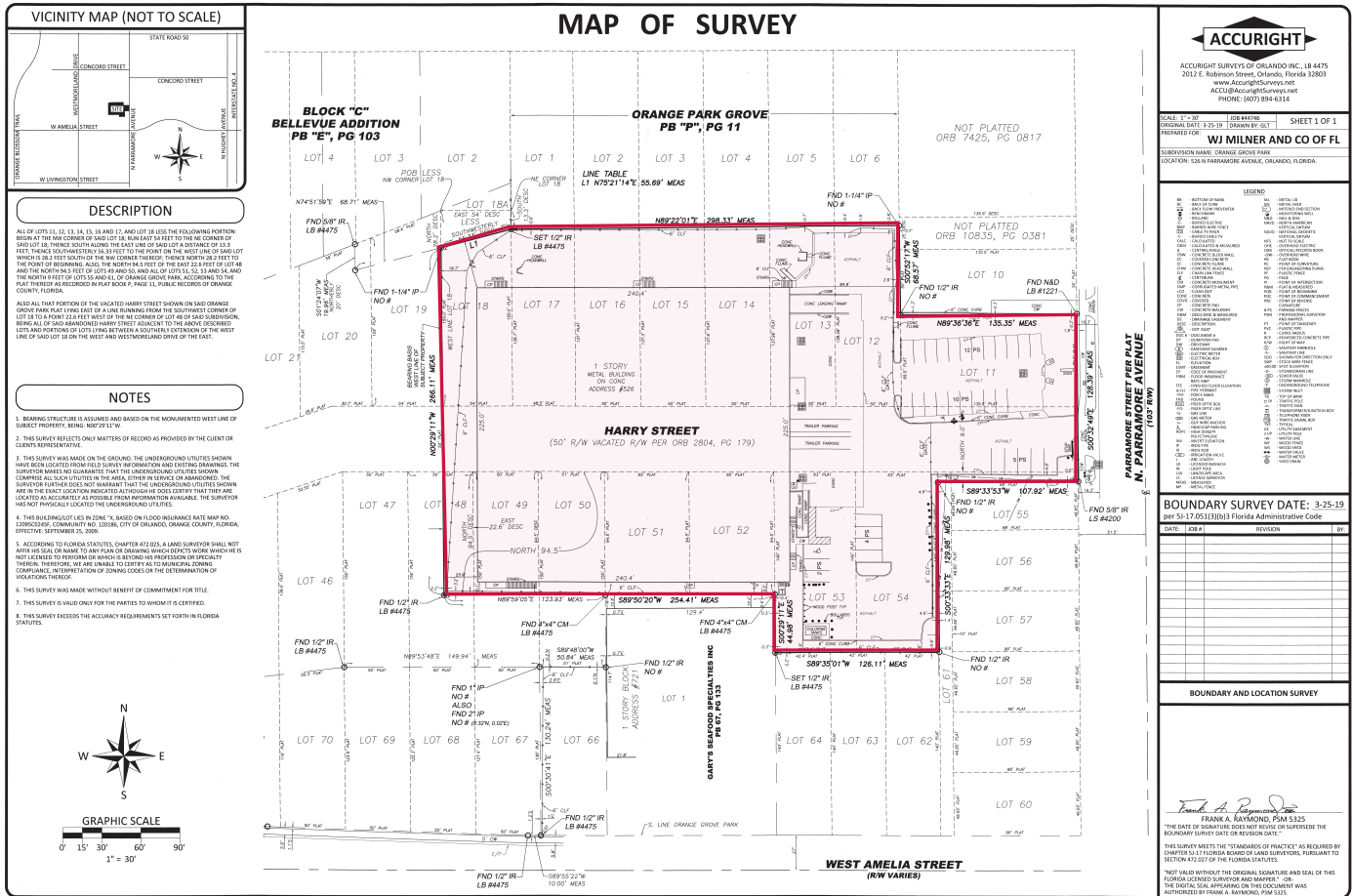
DOWNTOWN ORLANDO INDUSTRIAL WAREHOUSE

526 N. PARRAMORE AVE.

ORLANDO, FL 32801



SURVEY



Leasing Contacts:

Christopher "CJ" Griffith, SIOR
Vice President
cgriffith@lee-associates.com
D 321.281.8508

Ryan Griffith
Senior Vice President/Principal
rgriffith@lee-associates.com
D 321.281.8512

All information furnished regarding property for sale, rental or financing is from sources deemed reliable, but no warranty or representation is made to the accuracy thereof and same is submitted to errors, omissions, change of price, rental or other conditions prior to sale, lease or financing or withdrawal without notice. No liability of any kind is to be imposed on the broker herein.